

Submit 1 Copy To Appropriate District
Office
District I
1625 N French Dr , Hobbs, NM 88240
District II
1301 W. Grand Ave , Artesia, NM 88210
District III
1000 Rio Brazos Rd., Aztec, NM 87410
District IV
1220 S St Francis Dr , Santa Fe, NM
87505

State of New Mexico
Energy, Minerals and Natural Resources

Form C-103
October 13, 2009

HOBBSOCD

MAY 10 2012

WELL CONSERVATION DIVISION

1220 South St. Francis Dr.

Santa Fe, NM 87505

WELL API NO.
3002527682

5. Indicate Type of Lease
STATE ☐ FEE ☒

6. State Oil & Gas Lease No.

7. Lease Name or Unit Agreement Name

LEA

8. Well Number
002

9. OGRID Number
246368

10. Pool name or Wildcat
SAN ANDRESS

SUNDRY NOTICES AND REPORTS ON WELLS

(DO NOT USE THIS FORM FOR PROPOSALS TO DRILL OR TO DEEPEN OR PLUG BACK TO A DIFFERENT RESERVOIR USE "APPLICATION FOR PERMIT" (FORM C-101) FOR SUCH PROPOSALS.)

1. Type of Well: Oil Well ☐ Gas Well ☐ Other DISPOSAL SWD

2. Name of Operator
Basic Energy Services LP

3. Address of Operator
BOX 10460 MIDLAND, TEXAS 79702

4. Well Location

Unit Letter A : 850 feet from the NORTH line and 950 feet from the EAST line

Section 17 Township 23S Range 37E NMPM County LEA

11. Elevation (Show whether DR, RKB, RT, GR, etc.)

12. Check Appropriate Box to Indicate Nature of Notice, Report or Other Data

NOTICE OF INTENTION TO:

PERFORM REMEDIAL WORK ☐ PLUG AND ABANDON ☐
TEMPORARILY ABANDON ☐ CHANGE PLANS ☐
PULL OR ALTER CASING ☐ MULTIPLE COMPL ☐
DOWNHOLE COMMINGLE ☐

OTHER: ☐

SUBSEQUENT REPORT OF:

REMEDIAL WORK ☒ ALTERING CASING ☐
COMMENCE DRILLING OPNS. ☐ P AND A ☐
CASING/CEMENT JOB ☐

OTHER: ☐

13. Describe proposed or completed operations. (Clearly state all pertinent details, and give pertinent dates, including estimated date of starting any proposed work). SEE RULE 19.15.7.14 NMAC. For Multiple Completions: Attach wellbore diagram of proposed completion or recompletion.

4/27/2012 Friday, MIR, BOP, RU service unit, well on 30 inch vacuum, open master valve wait till neutral.
Removed Master Valve and speared top joint and latched with 2 3/8" elevators J/off AD-1 Pkr. pulled first joint out and laid down.
NU-BOP POH with Tubing and PKR. Replaced old Packer with redressed 5 1/2" AD-1 assembly, TIH inspecting stands back in.
Found total of 19 joints pin ends eaten. Called in for new 2 7/8 J-55 PCT replaced all bad tbgs. set AD-1 @ 4,024'.
NDBOP flange well up w/ 30 points pulled into Pkr. Loaded Csg with packer fluid PSI to 400# held for 30 min. release rig.
SDFN. Closed Master valve await MIT with OCD.

4/30/2012 Monday Notified OCD ready for MIT.
OCD will MIT on 5/3/12
5/3/12 MIT Lea Fee # 2 with OCD Officer Mark Whitaker passed MIT.
Placed well back on Vacuum back in Operation.
Please see attached Chart of MIT.

Spud Date:

Rig Release Date:

I hereby certify that the information above is true and complete to the best of my knowledge and belief.

SIGNATURE David Alvarado TITLE SENM Fluid Sales Mgt. DATE 5/8/12

Type or print name David Alvarado E-mail address: david.alvarado@basiceenergyservices.com PHONE 575.746.2072

For State Use Only

APPROVED BY [Signature] TITLE State Mgr DATE 5-10-2012
Conditions of Approval (if any):

MAY 10 2012

Basic Energy Services LP

Lea Fee # 2 SWD

850" FNL, 950" FEL, Unit (A), Sec 17, T23S, R37E

API # 30-025-27682

CURRENT
5/4/2012

Surface Hole

Bit Size

Inter. Hole

Bit Size 12 1/4"

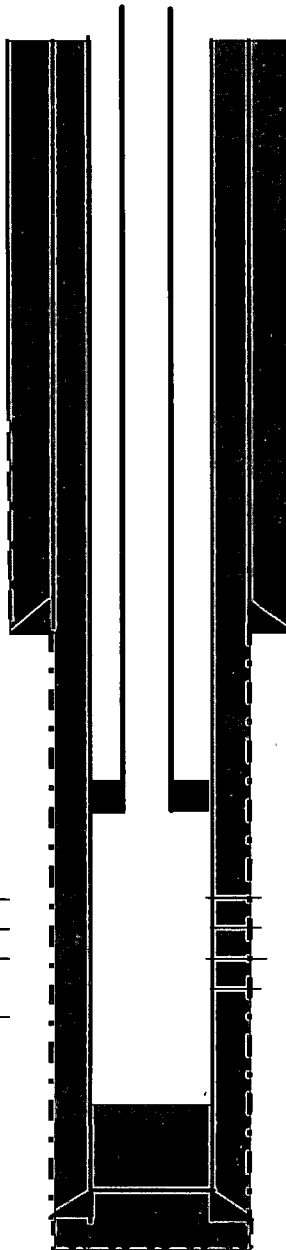
Cement Data:

Lead -

Tail -

Note -

Bit size 7 7/8"



TD @ 6,700'

Tree Connection 2 7/8" J-55 PCT

Surface Casing: 8 5/8" 24#

Setting Depth @ 1,117.72'
550sx Circulated Surf.

PKR Set @ 4,024'

AD-1 tention with 30 pionts pulled into it.

Perf Interval (4,106-4,576')

San Andres formation Permitted

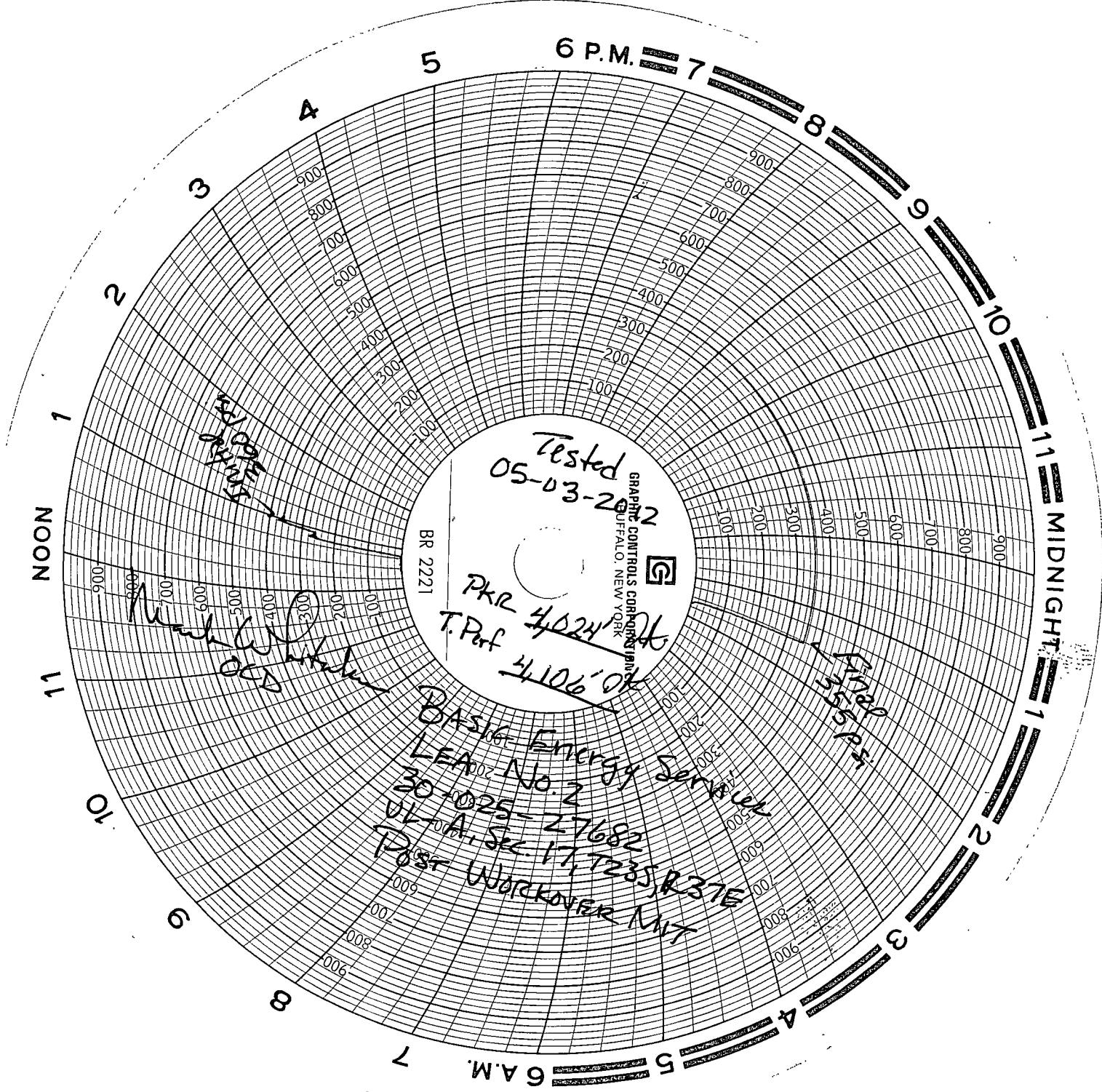
Order SWD-291 (4,000' - 5,000')

Max Surf Psi 800#

PBTD: 5,500'

Production Csg.: 5 1/2" 17#

Setting Depth @ 6691.21'
1,455 sx Circulated Surf.



Tested
05-03-2012

GRAPHIC CONTROLS CORPORATION
BUFFALO, NEW YORK

BR 2221

PKR 4024
T. Perf 4106

BASIC Energy Services
LEA No. 2
30-025-27682
VLA Sec. 17, 7235 R37E
Post Workover NIT

Mach 6.0
OCD

456 ft