

New Mexico Oil Conservation Division, District I

1625 N. French Drive

Hobbs, NM 88240

Form 3160-5
(August 2007)UNITED STATES
DEPARTMENT OF THE INTERIOR
BUREAU OF LAND MANAGEMENTFORM APPROVED
OMB No 1004-0137
Expires: July 31, 2010

MAY 15 2012

SUNDRY NOTICES AND REPORTS ON WELLS
Do not use this form for proposals to drill or to re-enter an
abandoned well. Use Form 3160-3 (APD) for such proposals.

5. Lease Serial No.

2 NMLC-068474

6. If Indian, Allottee or Tribe Name

SUBMIT IN TRIPLICATE - Other instructions on page 2

1. Type of Well

☐ Oil Well☐ Gas Well☒ Other

2. Name of Operator

Celero Energy II, LP

3a. Address

400 W. Illinois, Ste. 1601 Midland TX 79701

3b. Phone No. (include area code)

(432)686-1883

4. Location of Well (Footage, Sec., T., R., M., or Survey Description)

660' N 660' W

UL: D, Sec: 10, T: 14S, R: 31E

7. If Unit of CA/Agreement, Name and/or No.

8. Well Name and No

DRICKEY QUEEN SAND UNIT 29

9. API Well No.

30-005-01029

10. Field and Pool or Exploratory Area

CAPROCK QUEEN

11. Country or Parish, State

CHAVES

NM

12. CHECK THE APPROPRIATE BOX(ES) TO INDICATE NATURE OF NOTICE, REPORT OR OTHER DATA

TYPE OF SUBMISSION	TYPE OF ACTION			
<input type="checkbox"/> Notice of Intent	<input type="checkbox"/> Acidize	<input type="checkbox"/> Deepen	<input type="checkbox"/> Production (Start/Resume)	<input type="checkbox"/> Water Shut-Off
<input checked="" type="checkbox"/> Subsequent Report	<input type="checkbox"/> Alter Casing	<input type="checkbox"/> Fracture Treat	<input type="checkbox"/> Reclamation	<input type="checkbox"/> Well Integrity
<input type="checkbox"/> Final Abandonment Notice	<input checked="" type="checkbox"/> Casing Repair	<input type="checkbox"/> New Construction	<input type="checkbox"/> Recomplete	<input type="checkbox"/> Other _____
	<input type="checkbox"/> Change Plans	<input type="checkbox"/> Plug and Abandon	<input type="checkbox"/> Temporarily Abandon	
	<input type="checkbox"/> Convert to Injection	<input type="checkbox"/> Plug Back	<input type="checkbox"/> Water Disposal	

13. Describe Proposed or Completed Operation: Clearly state all pertinent details, including estimated starting date of any proposed work and approximate duration thereof. If the proposal is to deepen directionally or recompleat horizontally, give subsurface locations and measured and true vertical depths of all pertinent markers and zones. Attach the Bond under which the work will be performed or provide the Bond No. on file with BLM/BIA. Required subsequent reports must be filed within 30 days following completion of the involved operations. If the operation results in a multiple completion or recompleat in a new interval, a Form 3160-4 must be filed once testing has been completed. Final Abandonment Notices must be filed only after all requirements, including reclamation, have been completed and the operator has determined that the site is ready for final inspection.)

4/12 - 4/20/12

C/O to TD of 2915'. Circ hole clean. TIH w/ tbg and 5 1/2" AD-1 pkr & set @ 2792'. Pumped down tbg into perfs 2856-66' and OH from 2871' to 2915' with 200 gal of Xylene. TOH w/ tbg & pkr. TIH w/ 4" Watson Packer's Duplex Shoe, 1 jt of 4" 10.8# L-80 UFJ csg (bare), 4 jts of 4" 10.8# L-80 UFJ csg with bond coat (tot = 224'). Ran 2 3/8" tbg with Duplex Shoe running tool screw into Duplex Shoe. Tied onto 2 3/8" tbg w/ 2 7/8" tbg and ran liner to 2915' (wash 3' of fill to get to bottom). Circ hole clean. Liner set from 2691' to 2915'. Pump 50 sx of Class "C" cmt w/ 2% CaCl₂ at 14.8 ppg & 1.32 yield. Displace cmt with 15.5 BFW, leaving 1+ bbl of cmt in tbg. Release from Duplex Shoe and TOH w/ tbg & running tool. WOC 4 hours. Set pkr to 2508'. Load tbg-csg annulus. Pumped 15 BPW down tbg at 1.5 BPM at 200# Cmt job on liner did not hold. Pumped 10 BFW at 300# & 2 BPM, followed with 150 sx of Class "C" cmt with 2% CaCl₂ mixed at 14.8 ppg w/ a yield of 1.32. SD and wash up. Displace cmt with 15.5 BFW, 1 bbl below pkr with a SD psi of 600#. Staged cmt several times, displacing cmt 2.5+ bbls below pkr with final squeeze psi of 1300# (left estimated TOC at 2610'). WOC 13 1/2 hrs. TOH w/ tbg & pkr. TIH w/ tbg, 6 - 3 1/2" DC's with 4 3/4" bit. Ran and tag at 2615'. Drill cmt from 2615' to TOL at 2691'. Circ hole clean. TOH w/ tbg, LD DC's with bit. Ran tbg w/ pkr to 496' & test 5 1/2" csg from 496' to TOL & held 500# w/ no pressure loss. TOH w/ pkr. TIH w/ tbg & 3 1/4" bit. Drill 4' of cmt inside of 4" liner from 2691' - 2695'. Circ clean. TOH, LD 2 7/8" tbg WS w/ bit.

*Continued on attached sheet

14. I hereby certify that the foregoing is true and correct. Name (Printed/Typed)

Lisa Hunt

Title Regulatory Analyst

Signature

Lisa Hunt

Date 05/07/2012

ACCEPTED FOR RECORD

SPACE FOR FEDERAL OR STATE OFFICE USE

Approved by

/S/ DAVID R. GLASS

Title

Date

Conditions of approval, if any, and a check box approval of this notice does not warrant or certify that the applicant holds legal or equitable title to those rights in the subject lease which would entitle the applicant to conduct operations thereon.

Office

Title 18 U.S.C. Section 2385, Title 18 U.S.C. Section 1212, make it a crime for any person knowingly and willfully to make to any department or agency of the United States any false, fictitious or fraudulent statement or representation as to any matter within its jurisdiction.

(Instructions on page 2)

MAY 18 2012

Drickey Queen Sand Unit #29 – C103 continued

4/23/12 - Ran 4" csg inside of 5 1/2" csg as follows: install 4" aluminum alignment tool on btm of 1st jt of 4" 10.8# J-55 ST&C csg, 1 - 4" float collar plus 66 jts of 4" 10.8# J-55 ST&C csg (2696' total feet). Ran & set at 2691', tag top of 4" liner at 2691'. PU 18" and circ hole with PW, 4" csg set FS to 2691' with FC at 2649'. Pump 5 BFW at 2 BPM & 200#. Pump 120 sx of Class "C" cmt with 2% CaCl₂, SD, wash up and displace cmt to float collar at 1.5 BPM & 1100#. Bump float collar with 1600#. Check float and held okay. Circ 21 sx of cmt to pit. No circulation out 5 1/2" x 8 5/8" annulus. WOC.

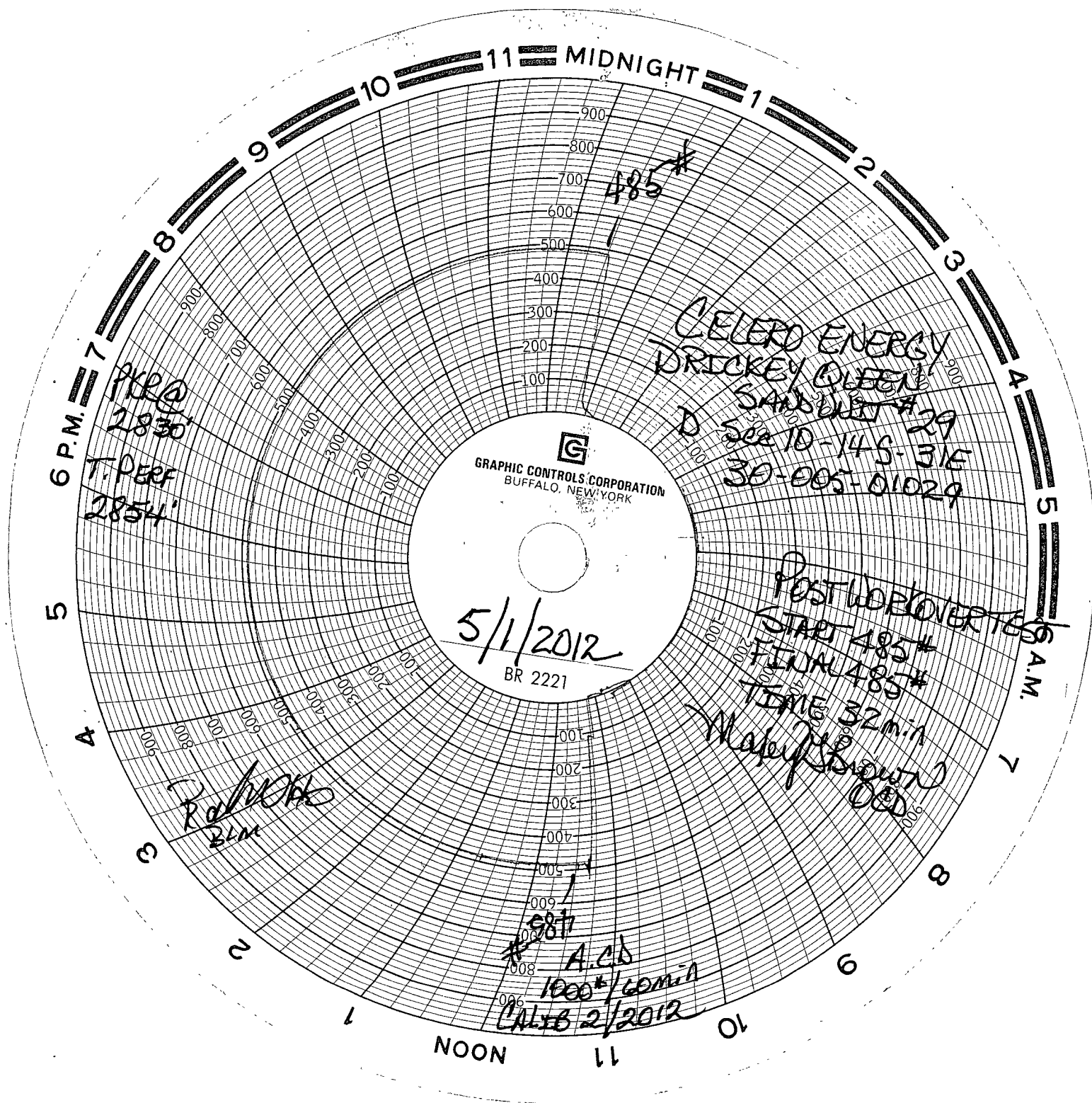
4/24/12 - WOC 11 hrs. TIH w/ 3 1/4" bit, 4 - 2 7/8" DC's & ran on 2 3/8" tbg WS. Tag at 2629' (GL). Drill rubber plug & cmt from 2629' to float collar at 2649'. D/O float collar and cmt to alignment tool at 2691'. Drl cmt to 2734' inside of 4" csg.

4/25/12 - Drl cmt from 2734' to 2800'. Fell out of cmt. TOH w/ tbg & BHA. Ran GR/CCL/CNL from 2000' to 2908'. Ran GR/CCL/CBL from 100' to 2908'. Perf 4" csg w/ 2 1/2" cased gun, 2 SPF, 120 degree phasing from 2854-68'; 15' & 30 holes. TIH w/ 2 3/8" tbg WS with 4" AD-1 pkr. Ran & set at 2778'. Load and test tbg-annulus to 550# & held. Pumped into perfs at 400# & 1 BPM w/ 5 BPW.

4/26/12 - Pump 4 BFW at 3 BPM & 1260#, followed w/ 2000 gal of 7.5% acid plus 45 - 7/8" ball sealers. Flush w/ 32 BFW, 20 bbls overflush. Release pkr, pull & LD tbg WS and pkr.

4/27/12 - TIH w/ 88 jts of 2 3/8" OD J-55 8rd EUE "TDC" IPC tbg with 4" AD-1 plastic coated pkr. NDBOP & NUWH. With pkr swinging at 2830', circ pkr fluid. Set pkr with 16 pts of tension at 2830' (G.L.). EOT @ 2834'. Set slips & finish NU 4 1/2" x 2 3/8" Larkin WH & installed 2 1/16" AL-BR tbg valve. Took pre-MIT test with chart. Tested for 33 minutes with 480# with no pressure loss.

5/1/12 – Ran MIT. Test for 32 mins to 485# with no pressure loss. Connect to injection. Witnessed & approved by Maxie Brown w/ OCD and Robert Hoskins with BLM. Original chart to OCD and a copy to BLM.



5/1/2012
BR 2221

CELERO ENERGY
DRICKEY, QUEEN
SANDY
D 30-005-01029
30-005-01029

POSTWORKOVER
START 485#
FINAL 485#
TIME 32min
Makeup
DOD

PKRQ
2830
T. PERF
2854

Rab
Bim

987
A.C.D
1000*/60min
CALIB 2/2012

CELERO ENERGY

FIELD: Caprock
LEASE/UNIT: Drickey Queen Sand Unit
COUNTY: Chaves

DATE: Apr. 25, 2012
BY: MWM
WELL: 29
STATE: New Mexico

Location: 660' FNL & 660' FWL, Sec 10D, T14S, R31E

SPUD: 11/54 COMP: 11/54

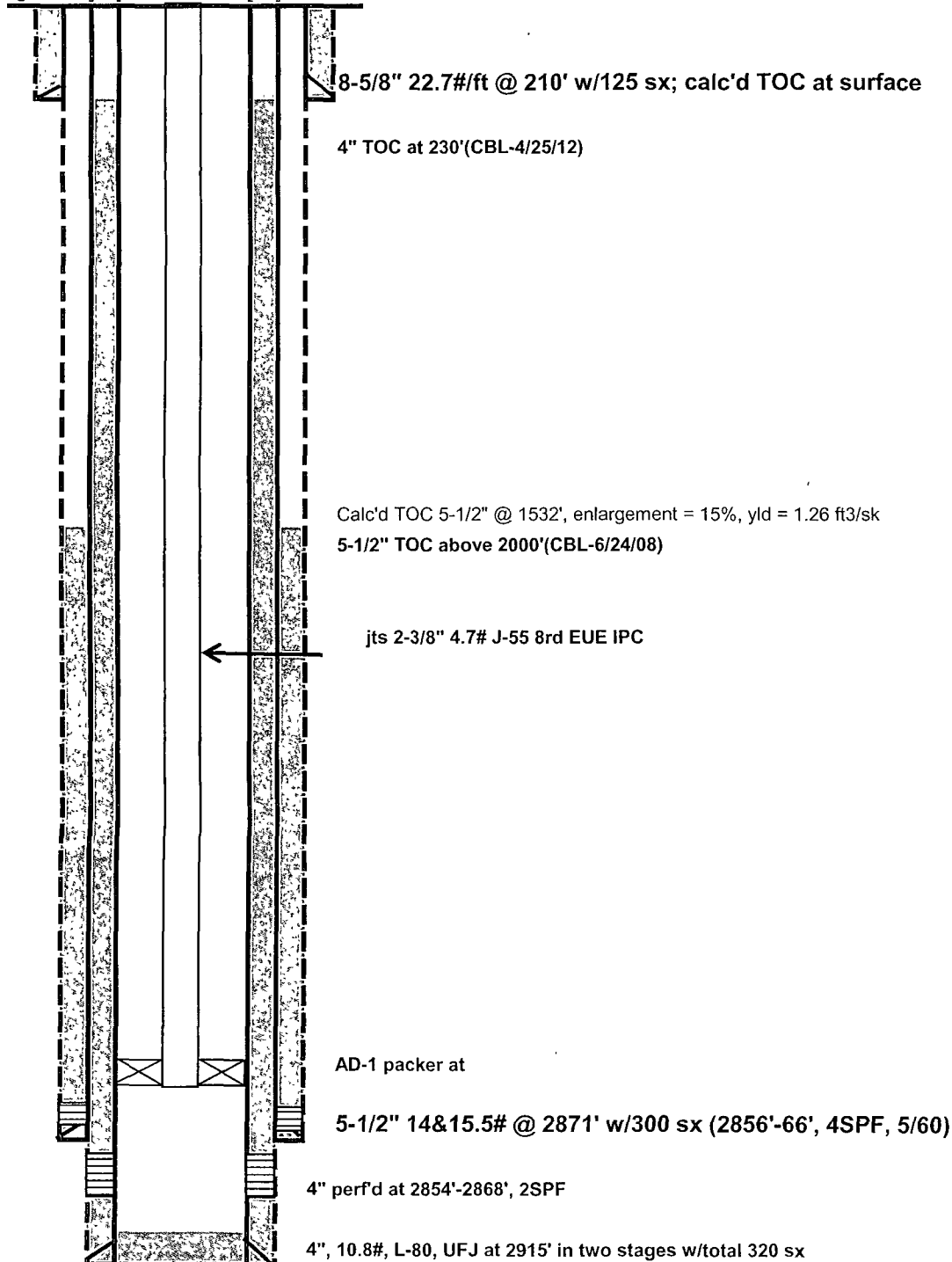
CURRENT STATUS: Injector

Original Well Name: DQSU Tract 6 #17

KB = 4361'

GL =

API = 30-005-01029



PBTD - 2915'
TD - 2915'

Queen Open Hole: 2871' - 2883' (11-54)
Queen Open Hole: 2871' - 2915' (06-08)