

Mack Energy Corporation
Onshore Order #6
Hydrogen Sulfide Drilling Operation Plan

RECEIVED

I. HYDROGEN SULFIDE TRAINING

All personnel, whether regularly assigned, contracted, or employed on an unscheduled basis, will receive training from a qualified instructor in the following areas prior to commencing drilling operations on this well:

1. The hazards and characteristics of hydrogen sulfide (H₂S)
2. The proper use and maintenance of personal protective equipment and life support systems.
3. The proper use of H₂S detectors, alarms, warning systems, briefing areas, evacuation procedures, and prevailing winds.
4. The proper techniques for first aid and rescue procedures.

In addition, supervisory personnel will be trained in the following areas:

1. The effects of H₂S on metal components. If high tensile tubular are to be used, personnel will be trained in their special maintenance requirements.
2. Corrective action and shut-in procedures when drilling or reworking a well and blowout prevention and well control procedures.
3. The contents and requirements of the H₂S Drilling Operations Plan and Public Protection Plan.

There will be an initial training session just prior to encountering a known or probable H₂S zone (within 3 days or 500 feet) and weekly H₂S and well control drills for all personnel in each crew. The initial training session shall include a review of the site specific H₂S Drilling Operations Plan and the Public Protection Plan. **The concentrations of H₂S of wells in this area from surface to TD are low enough that a contingency plan is not required.**

II. H₂S SAFETY EQUIPMENT AND SYSTEMS

Note: All H₂S safety equipment and systems will be installed, tested, and operational when drilling reaches a depth of 500 feet above, or three days prior to penetrating the first zone containing or reasonably expected to contain H₂S.

1. Well Control Equipment:

- A. Flare line.
- B. Choke manifold.
- C. Blind rams and pipe rams to accommodate all pipe sizes with properly sized closing unit.
- D. Auxiliary equipment may include if applicable: annular preventer & rotating head.

2. Protective equipment for essential personnel:

- A. Mark II Survive air 30-minute units located in the doghouse and at briefing areas, as indicated on well site diagram.

3. H2S detection and monitoring equipment:

- A. 1 portable H2S monitors positioned on location for best coverage and response. These units have warning lights and audible sirens when H2S levels of 20 PPM are reached.

4. Visual warning systems:

- A. Wind direction indicators as shown on well site diagram (Exhibit #8).
- B. Caution/Danger signs (Exhibit #7) shall be posted on roads providing direct access to location. Signs will be painted a high visibility yellow with black lettering of sufficient size to be readable at a reasonable distance from the immediate location. Bilingual signs will be used, when appropriate. See example attached.

5. Mud program:

- A. The mud program has been designed to minimize the volume of H2S circulated to surface. Proper mud weight, safe drilling practices and the use of H2S scavengers will minimize hazards when penetrating H2S bearing zones.

6. Metallurgy:

- A. All drill strings, casings, tubing, wellhead, blowout preventer, drilling spool, kill lines, choke manifold and lines, and valves shall be suitable for H2S service.
- B. All elastomers used for packing and seals shall be H2S trim.

7. Communication:

- A. Radio communications in company vehicles including cellular telephone and 2-way radio.
- B. Land line (telephone) communication at Office.

8. Well testing:

- A. Drill stem testing will be performed with a minimum number of personnel in the immediate vicinity, which are necessary to safely and adequately conduct the test. The drill stem testing will be conducted during daylight hours and formation fluids will not be flowed to the surface. All drill-stem-testing operations conducted in an H2S environment will use the closed chamber method of testing.

Attached to Form 3160-3
Mack Energy Corporation
Pintail Federal #2
330 FSL & 2110 FWL, SE/SW, Sec. 8 T17S R32E
Lea County, NM

B. There will be no drill stem testing.

EXHIBIT #7

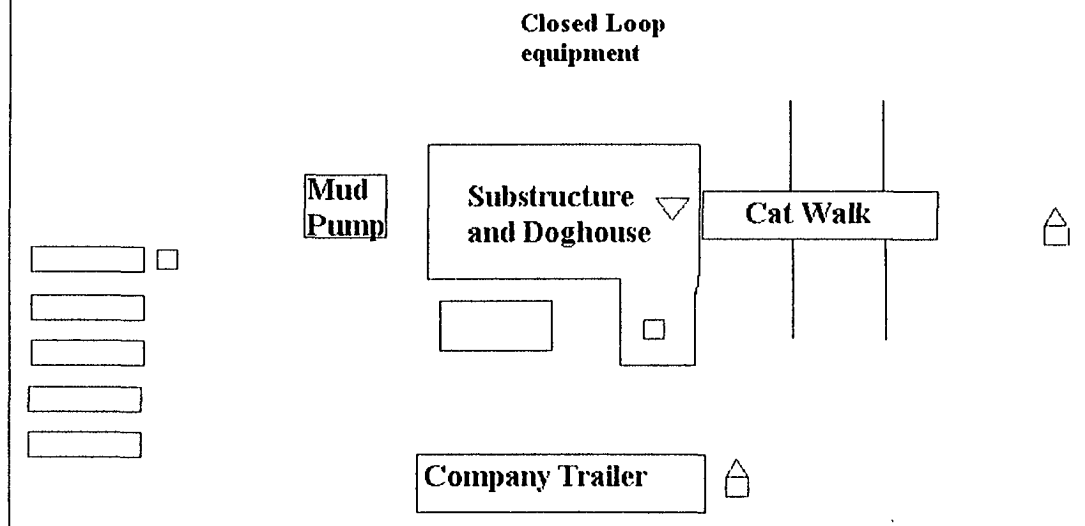
WARNING
YOU ARE ENTERING AN H2S
AUTHORIZED PERSONNEL ONLY

1. BEARDS OR CONTACT LENSES NOT ALLOWED
2. HARD HATS REQUIRED
3. SMOKING IN DESIGNATED AREAS ONLY
4. BE WIND CONSCIOUS AT ALL TIMES
5. CHECK WITH MACK ENERGY FOREMAN AT OFFICE

MACK ENERGY CORPORATION

1-575-748-1288

Prevailing Wind Direction
Summer - Southeast
Winter - Northeast



- ▽ H2S Monitors with alarms at the bell nipple
- Wind Direction Indicators
- △ Safe Briefing areas with caution signs and breathing equipment min 150 feet from

Mack Energy Corporation Call List, Eddy County

Artesia (575)	Cellular	Office	Home
Jim Krogman.....	746-5515.....	748-1288.....	746-2674
Lonnie Archer.....	746-7889.....	748-1288.....	365-2998
Donald Archer.....	748-7875.....	748-1288.....	748-2287
Chris Davis.....	746-7132.....	748-1288.....	
Kevin Garrett.....	746-7423.....	748-1288.....	

Agency Call List (575)**Artesia**

State Police.....	746-2703
City Police.....	746-2703
Sheriff's Office.....	746-9888
Ambulance.....	911
Fire Department.....	746-2701
LEPC (Local Emergency Planning Committee.....	746-2122
NMOCD.....	748-1283

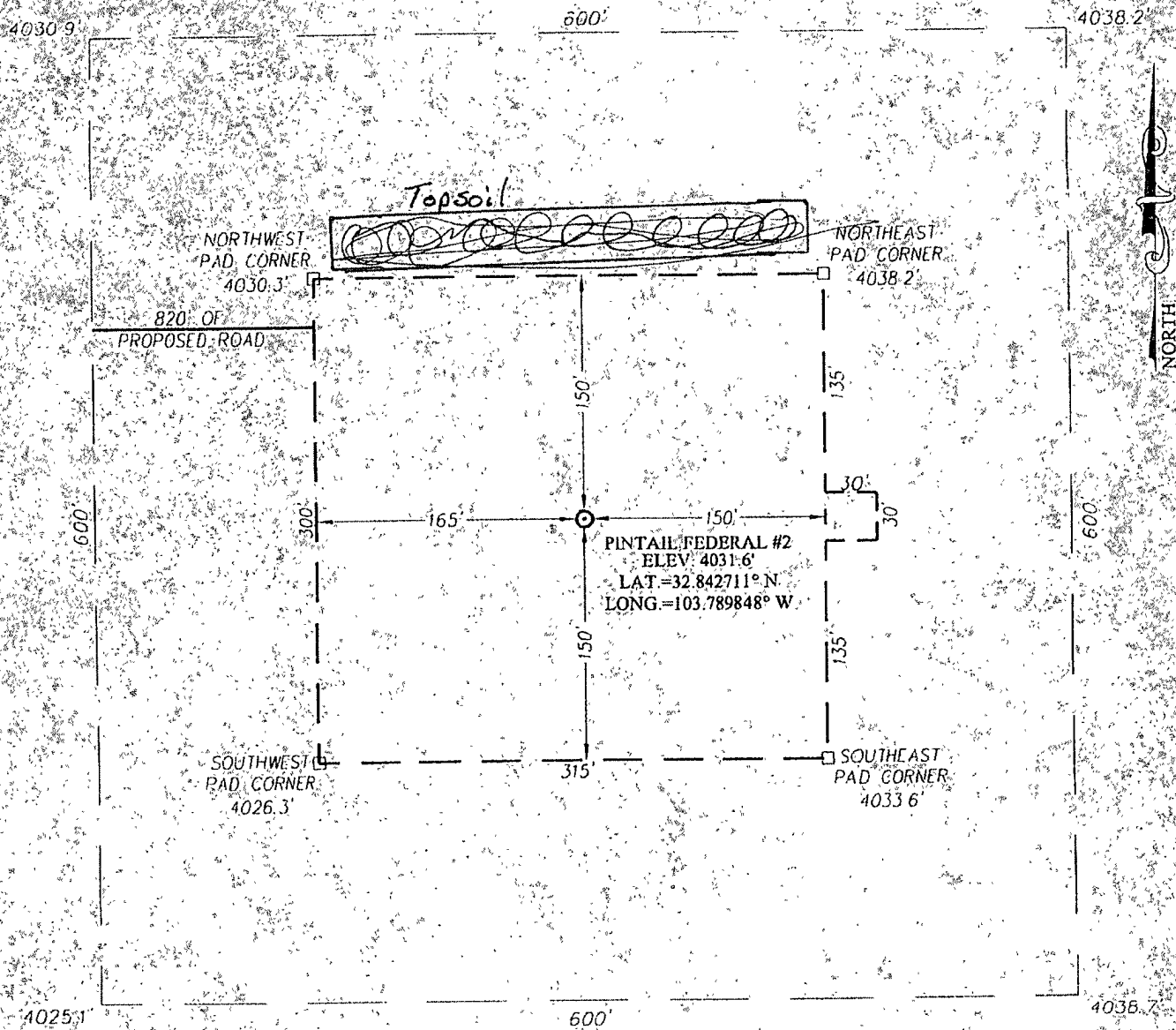
Carlsbad

State Police.....	885-3137
City Police.....	885-2111
Sheriff's Office.....	887-7551
Ambulance.....	911
Fire Department.....	885-2111
LEPC (Local Emergency Planning Committee.....	887-3798
Bureau of Land Management.....	887-6544
New Mexico Emergency Response Commission.....	(505)476-9690
24 Hour.....	(505)827-9126
Natonal Emergency Response Center (Washington).....	(800)424-8802

Emergency Services

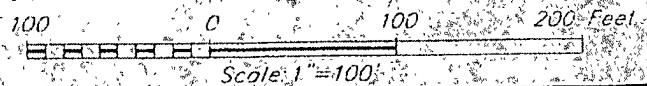
Boots & Coots IWC.....	1-800-256-9688 or (281)931-8884
Cudd pressure Control.....	(915)699-0139 or (915)563-3356
Halliburton.....	746-2757
B. J. Services.....	746-3569
Flight For Life-Lubbock, TX.....	(806)743-9911
Aerocare-Lubbock, TX.....	(806)747-8923
Med Flight Air Amb-Albuquerque, NM.....	(505)842-4433
Lifeguard Air Med Svc. Albuquerque, NM.....	(505)272-3115

SECTION 8, TOWNSHIP 17 SOUTH, RANGE 32 EAST, N.M.P.M.
LEA COUNTY **NEW MEXICO**



DIRECTIONS TO LOCATION

FROM THE INTERSECTION OF CO. RD. #125 AND CO. RD. #126
 GO SOUTH ON CO. RD. #126 (MALJAMAR RD.) APPROX. 1.0
 MILE. TURN RIGHT AND GO WEST APPROX. 0.3 MILES. TURN
 RIGHT AND GO NORTH APPROX. 0.7 MILES. TURN LEFT AND GO
 APPROX. 205 FEET. VEER RIGHT AND GO SOUTHWEST APPROX.
 0.2 MILES. VEER RIGHT AND GO NORTHWEST APPROX. 0.3 MILES.
 TO THE EXISTING PINTAIL LOCATION. FOLLOW ROAD SURVEY
 WEST APPROX. 1028 FEET. THEN SOUTH APPROX. 1061. THEN
 EAST APPROX. 820 FEET. EAST TO THE LOCATION



MACK ENERGY CORPORATION

PINTAIL FEDERAL #2 WELL
 LOCATED 330 FEET FROM THE SOUTH LINE
 AND 2110 FEET FROM THE WEST LINE OF SECTION 8,
 TOWNSHIP 17 SOUTH, RANGE 32 EAST, N.M.P.M.,
 LEA COUNTY, NEW MEXICO

PROVIDING SURVEYING SERVICES
 SINCE 1946
JOHN WEST SURVEYING COMPANY
 412 W. CAL PASEO
 HOBBS, N.M. 88240
 (575) 393-3117 www.jwsurvey.com

Survey Date: 3/7/12	CAD Date: 3/26/12	Drawn By: AF
W.O. No: 12110317	Per:	Per: W.O.
		Sheet 1 of 1