

Submit To Appropriate District Office Two Copies District I 1625 N. French Dr. Hobbs, NM 88240 District II 811 S. First St. Artesia, NM 88210 District III 1006 Rio Brazos Rd., Aztec, NM 87410 District IV 1220 S. St. Francis Dr., Santa Fe, NM 87505						<b>HOBBS OCD</b> State of New Mexico Energy, Minerals and Natural Resources <b>MAY 23 2012</b> Oil Conservation Division 1220 South St. Francis Dr. <b>RECEIVED</b> Santa Fe, NM 87505						Form C-105 Revised August 1, 2011					
1. WELL API NO. 30-025-39209																	
2. Type of Lease <input checked="" type="checkbox"/> STATEL <input type="checkbox"/> FEE <input type="checkbox"/> FED/INDIAN																	
3. State Oil & Gas Lease No																	
<b>WELL COMPLETION OR RECOMPLETION REPORT AND LOG</b>																	
4. Reason for filing <input checked="" type="checkbox"/> <b>COMPLETION REPORT</b> (Fill in boxes #1 through #31 for State and Fee wells only) <input type="checkbox"/> <b>C-144 CLOSURE ATTACHMENT</b> (Fill in boxes #1 through #9, #15 Date Rig Released and #32 and/or #33; attach this and the plat to the C-144 closure report in accordance with 19.15 17 13 K NMAC)																	
5. Lease Name or Unit Agreement Name EAST HOBBS SAN ANDRES UNIT																	
6. Well Number 999																	
7. Type of Completion <input type="checkbox"/> NEW WELL <input type="checkbox"/> WORKOVER <input type="checkbox"/> DEEPLING <input type="checkbox"/> PLUGBACK <input type="checkbox"/> DIFFERENT RESERVOIR <input checked="" type="checkbox"/> <b>OTHER CONVERT TO INJECTION</b>																	
8. Name of Operator LINN OPERATING, INC.																	
9. OGRID 269324																	
10. Address of Operator 600 TRAVIS STREET, SUITE 5100 HOUSTON TEXAS 77002																	
11. Pool name or Wildcat HOBBS SAN ANDRES, EAST																	
12. Location	Unit	Tr	Section	Township	Range	Lot	Feet from the	N/S Line	Feet from the	E/W Line	County						
Surface	A		31	18S	39E		990	NORTH	990	EAST	LEA						
BIT	A		31	18S	39E		990	NORTH	990	EAST	LEA						
13. Date Spudded	14. Date TD Reached	15. Date Rig Released				16. Date Completed (Ready to Produce)			17. Elevations (DF and RKB, RT, GR, etc.) 3592' GR								
12/15/2008	12/23/2008	5/2/2012				5/2/2012											
18. Total Measured Depth of Well				19. Plug Back Measured Depth				20. Was Directional Survey Made?		21. Type Electric and Other Logs Run							
4620'				4618'				No		DNS, SDL, BSAT, DLL, CBL, MGRD							
22. Producing Interval(s), of this completion - Top, Bottom, Name 1453-4592 San Andres																	
<b>23. CASING RECORD (Report all strings set in well)</b>																	
CASING SIZE		WEIGHT LB/FT		DEPTH SET		HOLE SIZE		CEMENTING RECORD		AMOUNT PULLED							
8-5/8		24#		1899'		12-1/4		930 sxs									
5-1/2		15 5#		4620'		7-7/8		750 sxs									
24. LINER RECORD    25. TUBING RECORD																	
SIZE	TOP	BOTTOM	SACKS CEMENT		SCREEN		SIZE	DEPTH SET	PACKER SET								
							2-7/8	4400'									
26. Perforation record (interval, size, and number)						27. ACID, SHOT, FRACTURE, CEMENT, SQUEEZE, ETC											
4548-4592, 42 shots,						DEPTH INTERVAL    AMOUNT AND KIND MATERIAL USED											
4511-4534 30' 30 shots,						4511-1592    7000 gals 20% HCl											
4453-4482 79'						4453-4482    3500 gals 20% HCl											
<b>28. PRODUCTION</b>																	
Date First Production			Production Method (Flowing, gas lift, pumping - Size and type pump)					Well Status (Prod. or Shut-in)									
Date of Test	Hours Tested	Choke Size	Prod'n For Test Period	Oil - Bbl	Gas - MCF	Water - Bbl	Gas - Oil Ratio										
Flow Tubing Press	Casing Pressure	Calculated 24-Hour Rate	Oil - Bbl	Gas - MCF	Water - Bbl	Oil Gravity - API - (Conn.)											
29. Disposition of Gas (Sold, used for fuel, vented, etc.)										30. Test Witnessed By							
31. List Attachments																	
32. If a temporary pit was used at the well, attach a plat with the location of the temporary pit																	
33. If an on-site burial was used at the well, report the exact location of the on-site burial																	
Latitude    Longitude    NAD 1927-1983																	
I hereby certify that the information shown on both sides of this form is true and complete to the best of my knowledge and belief																	
Signature <i>Terry B Callahan</i>				Printed Name		Title		Date <i>5/24/2012</i>									
E-mail Address <i>tcallahan@linnenergy.com</i>						Terry B Callahan		Regulatory Specialist III									

*ECG 5-24-2012*

# INSTRUCTIONS

This form is to be filed with the appropriate District Office of the Division not later than 20 days after the completion of any newly-drilled or deepened well and not later than 60 days after completion of closure. When submitted as a completion report, this shall be accompanied by one copy of all electrical and radio-activity logs run on the well and a summary of all special tests conducted, including drill stem tests. All depths reported shall be measured depths. In the case of directionally drilled wells, true vertical depths shall also be reported. For multiple completions, items 11, 12 and 26-31 shall be reported for each zone.

## INDICATE FORMATION TOPS IN CONFORMANCE WITH GEOGRAPHICAL SECTION OF STATE

Southeastern New Mexico		Northwestern New Mexico	
T. Anhy	T. Canyon	T. Ojo Alamo	T. Penn A"
T. Salt 1833	T. Strawn	T. Kirtland	T. Penn "B"
B. Salt	T. Atoka	T. Fruitland	T. Penn. "C"
T. Yates 3042	T. Miss	T. Pictured Cliffs	T. Penn. "D"
T. 7 Rivers 3225	T. Devonian	T. Cliff House	T. Leadville
T. Queen 3801	T. Silurian	T. Menefee	T. Madison
T. Grayburg 4149	T. Montoya	T. Point Lookout	T. Elbert
T. San Andres 4410	T. Simpson	T. Mancos	T. McCracken
T. Glorieta	T. McKee	T. Gallup	T. Ignacio Otzte
T. Paddock	T. Ellenburger	Base Greenhorn	T. Granite
T. Bluebry	T. Gr. Wash	T. Dakota	
T. Lubb	T. Delaware Sand	T. Morrison	
T. Drinkard	T. Bone Springs	T. Todilto	
T. Abo	T.	T. Entrada	
T. Wolfcamp	T.	T. Wingate	
T. Penn	T.	T. Chinle	
T. Cisco (Bough C)	T.	T. Permian	

## OIL OR GAS SANDS OR ZONES

No. 1, from ... 4482' . . . . .to. . . .4592' . . . . .  
 No. 2, from. . . . . to. . . . .  
 No. 3, from. . . . .to. . . . .  
 No. 4, from. . . . .to. . . . .

## IMPORTANT WATER SANDS

Include data on rate of water inflow and elevation to which water rose in hole.

No. 1, from. . . . .to. . . . .feet. . . . .  
 No. 2, from. . . . .to. . . . .feet. . . . .  
 No. 3, from. . . . .to. . . . .feet. . . . .

## LITHOLOGY RECORD (Attach additional sheet if necessary)

From	To	Thickness In Feet	Lithology	From	To	Thickness In Feet	Lithology
2800	2960	160	Salt, Anhydrite, Shale				
2960	3010	50	Anhydrite, Shale, Salt				
3010	3100	90	Salt, Anhydrite, Shale				
3100	3450	350	Anhydrite, Salt, Dolomite, Shale				
3450	3710	260	Anhydrite, Salt Shale				
3710	4200	490	Anhydrite, Dolomite, Shale				
4100	4360	160	Anhydrite, Dolomite				
4360	4460	110	Dolomite, Anhydrite, Sand				
4460	4660	200	Dolomite				

# Current Wellbore Diagram

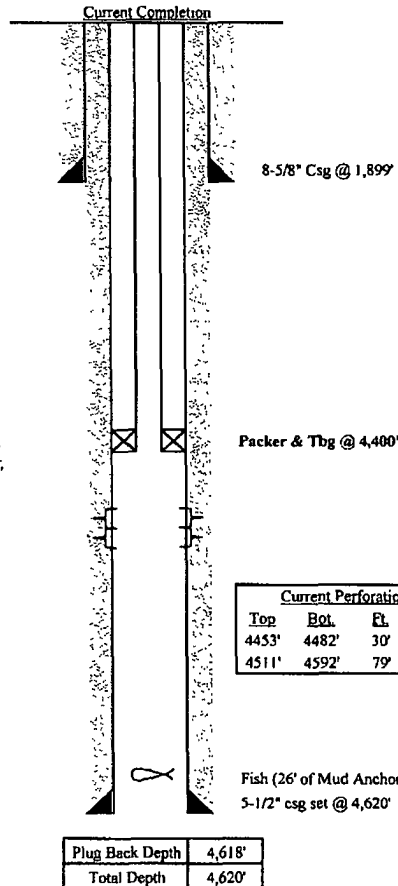
Lease & Well No	East Hobbs San Andres Unit #999
Field Name	East Hobbs (San Andres)
Location	990' FNL & 990' FEL, T: 18S R: 39E Sec: 31
K.B. Elevation	3,604'
D.F. Elevation	
Ground Level	

Former Name	
County & State	Lea County, New Mexico
API No.	30-025-39209
Updated	5/22/12 D. Kernard

Surface Casing				
Size (OD)	8 5/8"	Weight	24&32#	Depth
Grade	J-55	Sx. Cmt.	950 sx	TOC @
				Surface
Intermediate Casing				
Size (OD)	n/a	Weight		Depth
Grade		Sx. Cmt.		TOC @
Production Casing				
Size (OD)	5 1/2"	Weight	15.5#	Depth
Grade		Sx. Cmt.	750 sx	TOC @
				Surface

## Well History

12/6/08 - Spud Well; Set 8-5/8" csg @ 1,899', Cmt'd w/ 950 sx cmt; Circ 161 sx to pit  
 12/23/08 - TD well @ 4,620'; Set 5-1/2" csg @ 4,620', Cmt'd w/ 750 sx cmt; Circ 89 sx to pit  
 12/27/08 - RIH w/ bit & tag @ 4,580'; Drld out cmt & wiper plug to 4,618';  
 12/28/08 - Perf'd f/ 4,548 - 92' & 4,511 - 34' @ 1 spf (79 holes total); RIH w/ pkr & set same @ 4,405';  
 Acdz perms w/ 7,000 gals 20% NEFE HCl + 120 BS, 14 Swab runs - slight oil cut and gas blow;  
 POH w/ Pkr; Perf'd P1 zone f/ 4,453 - 82' @ 1 spf (30 holes total); RIH w/ RBP & pkr, set  
 same @ 4,500 & 4,344' respectively; Acdz P1 2,000 gals 20% NEFE HCl + 45 BS;  
 1/6/09 - RIH w/ PC Pump and put well on production  
 2/10/09 - POH w/ PC pump; RIH w/ Pkr & set same @ 4,500' isolating P1 perms on backside and  
 P2, P3, P4 below Pkr; Swabbed and made all H2O; RIH w/ RBP & set same @ 4,500';  
 Swabbed 1 run and POH w/ RBP; RIH w/ rod pump  
 2/26/09 - POH w/ rod pump & RIH w/ PC pump  
 12/7/09 - RIH w/ Pkr & set same @ 4,414'; Pmpg 1600 bbls polymer into perms; Swabbed all H2O  
 Pmpd 370 lbs Acrolein prior to shutting well in;  
 1/6/10 - RIH w/ PC pump and place well on production  
 2/25/10 - Chgd out PC pump  
 3/9/10 - POH w/ rotor and tbg parted and can not fish; RIH w/ freepoint and could not get through  
 tbg; RIH w/ jet cutter and cut tbg @ 4,521'; RIH w/ spear and POH w/ fish, 26' of mud  
 anchor left in hole, tried to fish 1 time and did not fish (26' of mud anchor); RIH w/ TAC &  
 put well on production  
 6/9/10 - POH w/ tbg (prtd 15 stands down); RIH w/ overshot and sheered TAC; POH w/ tbg;  
 RIH w/ PC pump



## Tubing Detail: (5/1/12)

144 jis: 2-7/8", 6.5#, J-55 Tbg (4,400')

Current Perforations			
Top	Bot.	Fl.	Shots
4453'	4482'	30'	30
4511'	4592'	79'	-

P1  
P2, P3, P4

Fish (26' of Mud Anchor)  
5-1/2" csg set @ 4,620'

Plug Back Depth	4,618'
Total Depth	4,620'

Formation Record	Depth
Anhydrite	
Top of Salt	
Base of Salt	2,950'
Yates	2,998'
7 Rivers	3,235'
Queen	3,779'
Grayburg	4,161'
San Andres	4,446'