

Lease & Well No	East Hobbs San Andres Unit #999
Field Name	East Hobbs (San Andres)
Location	990' FNL & 990' FEL, T 18S R 39E Sec 31
K.B. Elevation	3,604'
D.F. Elevation	
Ground Level	

Former Name	
County & State	Lea County, New Mexico
API No	30-025-39209
Updated	5/22/12 D Kennard

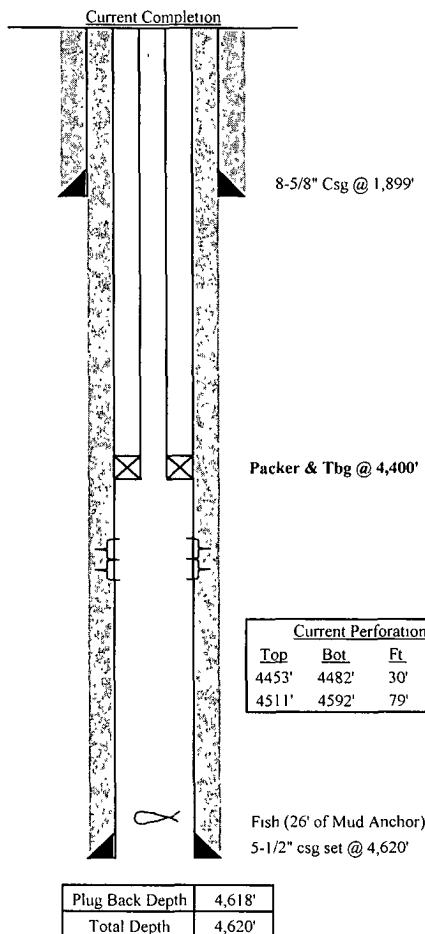
Tubing Detail: (5/1/12)

144 jts 2-7/8", 6 5/8", J-55 Tbg (4,400')

Surface Casing				
Size (OD)	8 5/8"	Weight	24&32#	Depth
Grade	J-55	Sx Cmt	950 sx	TOC @
				Surface
Intermediate Casing				
Size (OD)	n/a	Weight		Depth
Grade		Sx Cmt		TOC @
Production Casing				
Size (OD)	5 1/2"	Weight	15 5#	Depth
Grade		Sx Cmt	750 sx	TOC @
				Surface

Well History

12/6/08 - Spud Well, Set 8-5/8" csg @ 1,899', Cmtd w/ 950 sx cmt, Circ 161 sx to pit
 12/23/08 - TD well @ 4,620', Set 5-1/2" csg @ 4,620', Cmtd w/ 750 sx cmt, Circ 89 sx to pit
 12/27/08 - RIH w/ bit & tag @ 4,580', Drld out cmt & wiper plug to 4,618'.
 12/28/08 - Perf'd f/ 4,548 - 92' & 4,511 - 34' @ 1 spf (79 holes total), RIH w/ pkr & set same @ 4,405',
 Acdz perms w/ 7,000 gals 20% NEFE HCl + 120 BS, 14 Swab runs - slight oil cut and gas blow,
 POH w/ Pkr, Perf'd P1 zone f/ 4,453 - 82' @ 1 spf (30 holes total), RIH w/ RBP & pkr, set
 same @ 4,500 & 4,344' respectively, Acdz P1 2,000 gals 20% NEFE HCl + 45 BS,
 1/6/09 - RIH w/ PC Pump and put well on production
 2/10/09 - POH w/ PC pump, RIH w/ Pkr & set same @ 4,500' isolating P1 perms on backside and
 P2, P3, P4 below Pkr, Swabbed and made all H2O, RIH w/ RBP & set same @ 4,500',
 Swabbed 1 run and POH w/ RBP, RIH w/ rod pump
 2/26/09 - POH w/ rod pump & RIH w/ PC pump
 12/7/09 - RIH w/ Pkr & set same @ 4,414', Pmpg 1600 bbls polymer into perms, Swabbed all H2O
 Pmpd 370 lbs Acrolein prior to shutting well in,
 1/6/10 - RIH w/ PC pump and place well on production
 2/25/10 - Chgd out PC pump
 3/9/10 - POH w/ rotor and tbg parted and can not fish, RIH w/ freepoint and could not get through
 tbg, RIH w/ jet cutter and cut tbg @ 4,521', RIH w/ spear and POH w/ fish, 26' of mud
 anchor left in hole, tried to fish 1 time and did not fish (26' of mud anchor), RIH w/ TAC &
 put well on production
 6/9/10 - POH w/ tbg (prtd 15 stands down), RIH w/ overshot and sheered TAC, POH w/ tbg,
 RIH w/ PC pump



HOBBS OCD

MAY 25 2012

RECEIVED

Current Perforations			
Top	Bot	Ft	Shots
4453'	4482'	30'	30
4511'	4592'	79'	-

P1
P2, P3, P4Fish (26' of Mud Anchor)
5-1/2" csg set @ 4,620'

Plug Back Depth	4,618'
Total Depth	4,620'

Formation Record	Depth
Anhydrite	
Top of Salt	
Base of Salt	2,950'
Yates	2,998'
7 Rivers	3,235'
Queen	3,779'
Grayburg	4,161'
San Andres	4,446'

30-025-39209

MAY 29 2012