

District I
1625 N. French Dr., Hobbs, NM 88240
District II
1301 W. Grand Avenue, Artesia, NM 88210
District III
1000 Rio Brozos Rd., Aztec, NM 87410
District IV
1220 S. St. Francis Dr., Santa Fe, NM 87505

State of New Mexico
Energy, Minerals & Natural Resources Department
OIL CONSERVATION DIVISION
1220 South St. Francis Dr.
Santa Fe, NM 87505

Form C-402
Revised October 12, 2005
Submit to Appropriate District Office
State Lease- 4 Copies
Fee Lease- 3 Copies

☐ AMENDED REPORT

WELL LOCATION AND ACREAGE DEDICATION PLAT

| | | |
|----------------------------|--------------------------------------|--------------------------------------|
| API Number 30-025-40613 | Pool Code 41442 | Pool Name Lusk; Bone Spring, East |
| Property Code 28095 | Property Name LUSK "22" FEDERAL | Well Number 3H |
| OGRID No. 7377 | Operator Name EOG RESOURCES, INC. | Elevation 3606.5' |

Surface Location

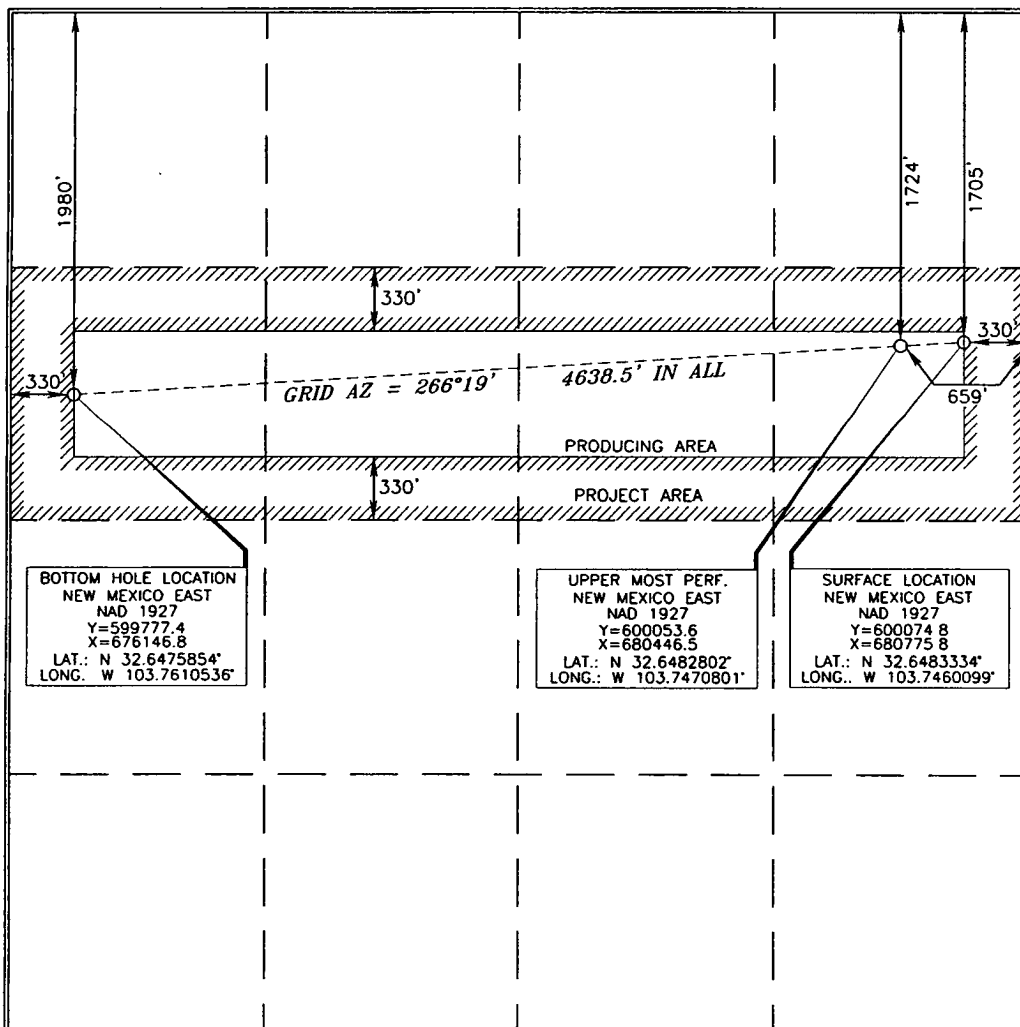
| UL or lot no. | Section | Township | Range | Lot Idn | Feet from the | North/South line | Feet from the | East/West line | County |
|---------------|---------|----------|-------------------|---------|---------------|------------------|---------------|----------------|--------|
| H | 22 | 19 SOUTH | 32 EAST, N.M.P.M. | | 1705' | NORTH | 330' | EAST | LEA |

Bottom Hole Location If Different From Surface

| UL or lot no. | Section | Township | Range | Lot Idn | Feet from the | North/South line | Feet from the | East/West line | County |
|---------------|---------|----------|-------------------|---------|---------------|------------------|---------------|----------------|--------|
| E | 22 | 19 SOUTH | 32 EAST, N.M.P.M. | | 1980' | NORTH | 330' | WEST | LEA |

| Dedicated Acres | Joint or Infill | Consolidation Code | Order No. |
|-----------------|-----------------|--------------------|-----------|
| 160 | | | |

No allowable will be assigned to this completion until all interests have been consolidated or a non-standard unit has been approved by the division.



OPERATOR CERTIFICATION

I hereby certify that the information contained herein is true and complete to the best of my knowledge and belief, and that this organization either owns a working interest or unleased mineral interest in the land including the proposed bottom hole location or has a right to drill this well at this location pursuant to a contract with an owner of such a mineral or working interest, or to a voluntary pooling agreement or a compulsory pooling order heretofore entered by the division.

Roger Motley 10-17-2011
Signature Date

Roger Motley
Printed Name

SURVEYOR CERTIFICATION

I hereby certify that the well location shown on this plat was plotted from field notes or actual surveys made by me or under my supervision, and that the same is true and correct to the best of my belief.

15079
AUGUST 4, 2011
Date of Survey

Signature and Seal of Professional Surveyor

Terry J. Abel 9/14/2011
Certificate Number 15079

WO# 110804WL-d (KA)

JUN 13 2012