

DISTRICT I
1626 N. French Dr., Hobbs, NM 88240

DISTRICT II
1301 W. Grand Avenue, Artesia, NM 88210

DISTRICT III
1000 Rio Brazos Rd., Aztec, NM 87410

DISTRICT IV
1220 S. St. Francis Dr., Santa Fe, NM 87505

JUN 19 2012

State of New Mexico
Energy, Minerals and Natural Resources Department

Form C-102
Revised July 16, 2010

Submit one copy to appropriate
District Office

RECEIVED

CONSERVATION DIVISION
1220 South St. Francis Dr.
Santa Fe, New Mexico 87505

WELL LOCATION AND ACREAGE DEDICATION PLAT

☒ AMENDED REPORT

API Number 30-025-40615	Pool Code 46990	Pool Name Monument; Blinemy
Property Code 302333	Property Name JR PHILLIPS	Well Number 12
OGRID No. 873	Operator Name APACHE CORPORATION	Elevation 3581'

Surface Location

UL or lot No.	Section	Township	Range	Lot Idn	Feet from the	North/South line	Feet from the	East/West line	County
LOT 2	1	20 S	36 E		570	NORTH	2240	EAST	LEA

Bottom Hole Location If Different From Surface

UL or lot No.	Section	Township	Range	Lot Idn	Feet from the	North/South line	Feet from the	East/West line	County
LOT 2	1	20 S	36 E		660	NORTH	2310	EAST	LEA

Dedicated Acres	Joint or Infill	Consolidation Code	Order No.
40			

NO ALLOWABLE WILL BE ASSIGNED TO THIS COMPLETION UNTIL ALL INTERESTS HAVE BEEN CONSOLIDATED
OR A NON-STANDARD UNIT HAS BEEN APPROVED BY THE DIVISION

<p>LOT 4</p> <p>PROPOSED BOTTOM HOLE LOCATION Lat - N 32°36'27.99" Long - W 103°18'24.02" NMSPC- N 586366.637 E 857480.118 (NAD-83) Lat - N 32°36'27.56" Long - W 103°18'22.29" NMSPC- N 586304.478 E 816298.112 (NAD-27)</p>	<p>LOT 2</p> <p>SURFACE LOCATION Lat - N 32°36'28.89" Long - W 103°18'23.20" NMSPC- N 586457.515 E 857549.748 (NAD-83) Lat - N 32°36'28.45" Long - W 103°18'21.46" NMSPC- N 586395.357 E 816368.745 (NAD-27)</p>	<p>LOT 1</p>	<p>OPERATOR CERTIFICATION I hereby certify that the information contained herein is true and complete to the best of my knowledge and belief, and that this organization either owns a working interest or unleased mineral interest in the land including the proposed bottom hole location or has a right to drill this well at this location pursuant to a contract with an owner of such a mineral or working interest, or to a voluntary pooling agreement or a compulsory pooling order heretofore entered by the division. Susan Blakemore 6/19/2012 Signature Date Susan Blakemore Printed Name susan.blakemore@apachecorp.com Email Address</p>
<p>SURVEYOR CERTIFICATION I hereby certify that the well location shown on this plat was plotted from field notes of actual surveys made by me or under my supervision, and that the same is true and correct to the best of my belief.</p>			<p>APACHE CORPORATION NEW MEXICO 7977 26634</p>
<p>Date Surveyed Signature & Seal of Professional Surveyor</p>			<p>Certificate No. Gary L. Jones 7977 BASIN SURVEYS 26634</p>

JUN 20 2012

DISTRICT I
1625 N. French Dr., Hobbs, NM 88240

DISTRICT II
1301 W. Grand Avenue, Artesia, NM 88210

DISTRICT III
1000 Rio Brazos Rd., Aztec, NM 87410

DISTRICT IV
1220 S. St. Francis Dr., Santa Fe, NM 87505

State of New Mexico
Energy, Minerals and Natural Resources Department

Form C-102
Revised July 16, 2010

Submit one copy to appropriate
District Office

OIL CONSERVATION DIVISION
1220 South St. Francis Dr.
Santa Fe, New Mexico 87505

WELL LOCATION AND ACREAGE DEDICATION PLAT

☒ AMENDED REPORT

API Number 30-025-40615	Pool Code 47080	Pool Name Monument; Paddock
Property Code 302333	Property Name JR PHILLIPS	
Well Number 12		
OGRID No. 873	Operator Name APACHE CORPORATION	
	Elevation 3581'	

Surface Location

UL or lot No.	Section	Township	Range	Lot Idn	Feet from the	North/South line	Feet from the	East/West line	County
LOT 2	1	20 S	36 E		570	NORTH	2240	EAST	LEA

Bottom Hole Location If Different From Surface

UL or lot No.	Section	Township	Range	Lot Idn	Feet from the	North/South line	Feet from the	East/West line	County
LOT 2	1	20 S	36 E		660	NORTH	2310	EAST	LEA

Dedicated Acres 40	Joint or Infill	Consolidation Code	Order No.
------------------------------	-----------------	--------------------	-----------

NO ALLOWABLE WILL BE ASSIGNED TO THIS COMPLETION UNTIL ALL INTERESTS HAVE BEEN CONSOLIDATED
OR A NON-STANDARD UNIT HAS BEEN APPROVED BY THE DIVISION

<p>LOT 4</p> <p>PROPOSED BOTTOM HOLE LOCATION</p> <p>Lat - N 32°36'27.99" Long - W 103°18'24.02" NMSPCE- N 586366.637 E 857480.118 (NAD-83)</p> <p>Lat - N 32°36'27.56" Long - W 103°18'22.29" NMSPCE- N 586304.478 E 816298.112 (NAD-27)</p>	<p>LOT 2</p> <p>SURFACE LOCATION</p> <p>Lat - N 32°36'28.89" Long - W 103°18'23.20" NMSPCE- N 586457.515 E 857549.748 (NAD-83)</p> <p>Lat - N 32°36'28.45" Long - W 103°18'21.46" NMSPCE- N 586395.357 E 816368.745 (NAD-27)</p>	<p>LOT 1</p>	<p>OPERATOR CERTIFICATION</p> <p>I hereby certify that the information contained herein is true and complete to the best of my knowledge and belief, and that this organization either owns a working interest or unleased mineral interest in the land including the proposed bottom hole location or has a right to drill this well at this location pursuant to a contract with an owner of such a mineral or working interest, or to a voluntary pooling agreement or a compulsory pooling order heretofore entered by the division.</p> <p><i>Susan Blakemore</i> 6/19/2012 Signature Date Susan Blakemore Printed Name susan.blakemore@apachecorp.com Email Address</p> <p>SURVEYOR CERTIFICATION</p> <p>I hereby certify that the well location shown on this plat was plotted from field notes of actual surveys made by me or under my supervision and that the same is true and correct to the best of my belief.</p> <p>APR 24 2012 Date Surveyed NEW MEXICO Professional Surveyor 7977 Certificate No. Gary L. Jones 7977 BASIN SURVEYS 26634</p>
--	---	--------------	---

**SECTION 1, TOWNSHIP 20 SOUTH, RANGE 36 EAST, N.M.P.M.,
LEA COUNTY, NEW MEXICO.**

State Hwy 32

Existing Lease Road - 0.3 mile

Prop. Lease Rd.
300'

150' NORTH
OFF SET
3582.0'

APACHE CORPORATION
JR PHILLIPS #12
ELEV. - 3581'

150' WEST
OFF SET
3581.2'

150' EAST
OFF SET
3581.0'

Force

90' SOUTH
OFF SET
3581.0'

SURFACE LOCATION
Lat - N 32°36'28.89"
Long - W 103°18'23.20"
NMSPCE- N 586457.515
E 857549.748
(NAD-83)

SURFACE LOCATION
Lat - N 32°36'28.45"
Long - W 103°18'21.46"
NMSPCE- N 586395.357
E 816368.745
(NAD-27)

200 0 200 400 FEET
SCALE: 1" = 200'

Directions to Location:

FROM THE JUNCTION OF STATE HWY 32 AND STATE
HWY 8, GO WESTERLY FOR 3.0 MILES TO LEASE
ROAD; THEN SOUTH ON LEASE ROAD FOR 0.3 MILE
TO PROPOSED LEASE ROAD.

BASIN SURVEYS P.O. BOX 1786 --HOBBS, NEW MEXICO

W.O. Number: 26634

Drawn By: K. GOAD

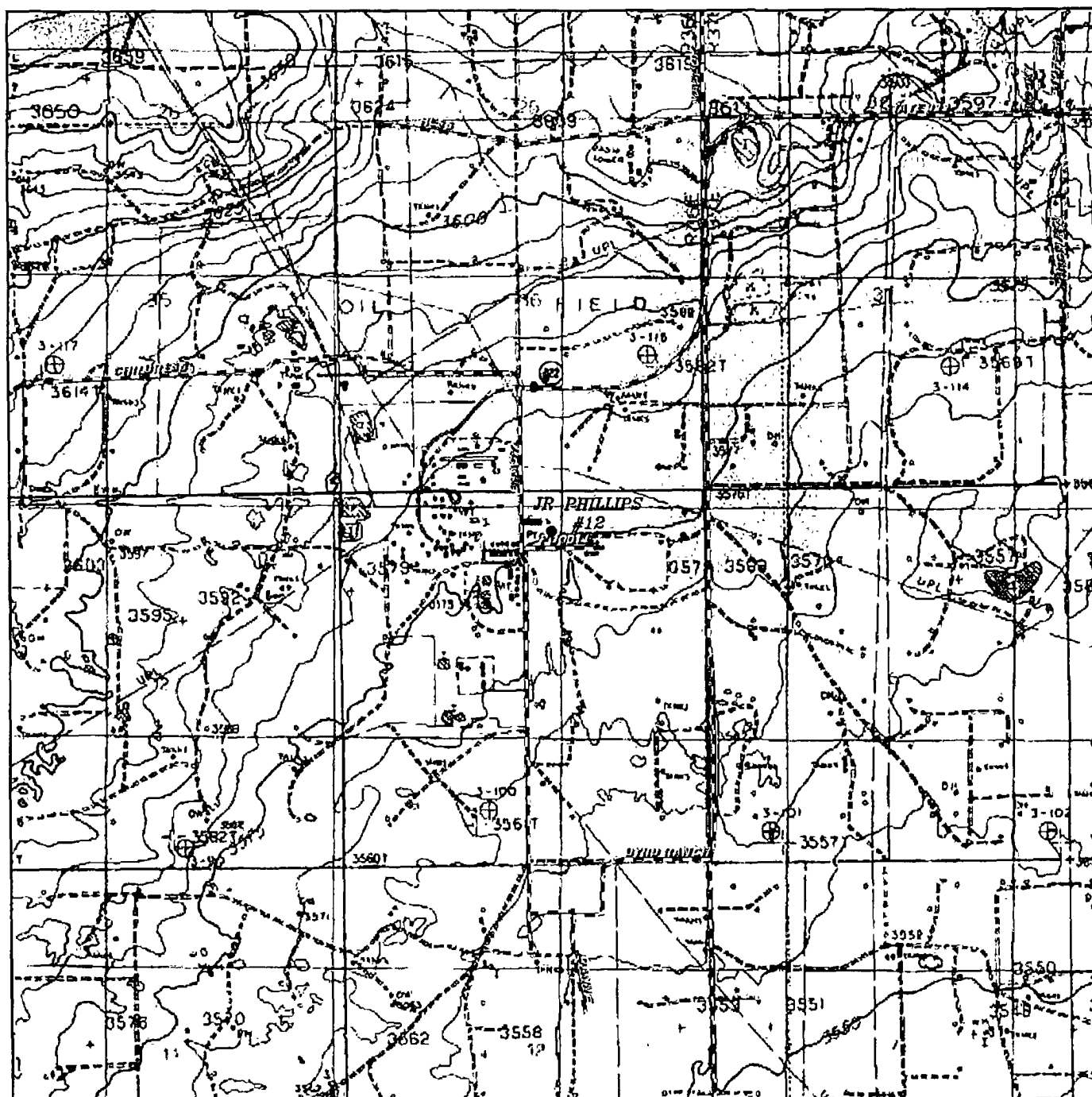
Date: 05-25-2012 Disk: KJG - 26634WELL.DWG

APACHE CORPORATION

REF: JR PHILLIPS #12 / WELL PAD TOPO

THE JR PHILLIPS #12 LOCATED 570' FROM
THE NORTH LINE AND 2240' FROM THE EAST LINE OF
SECTION 1, TOWNSHIP 20 SOUTH, RANGE 36 EAST,
N.M.P.M., LEA COUNTY, NEW MEXICO.

Survey Date: 04-24-2012 Sheet 1 of 1 Sheets



JR PHILLIPS #12

*Located 570' FNL and 2240' FEL
Section 1, Township 20 South, Range 36 East,
N.M.P.M., Lea County, New Mexico.*



P.O. Box 1786
1120 N. West County Rd.
Hobbs, New Mexico 88241
(575) 393-7316 - Office
(575) 392-2206 - Fax
basinsurveys.com

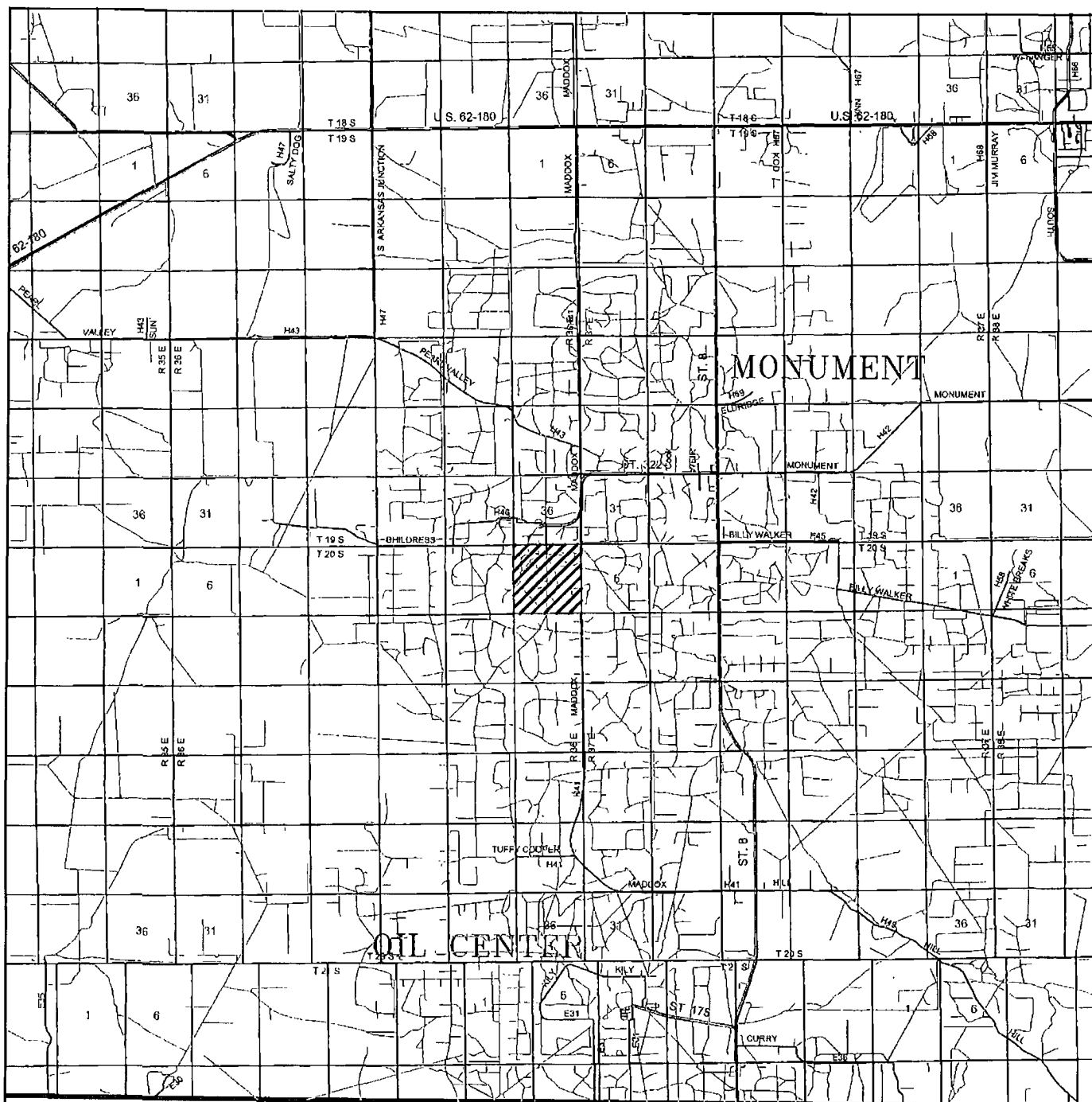
W.O. Number KJG - 26634

Survey Date: 04-24-2012

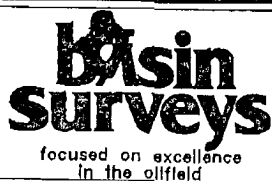
Scale: 1" = 2000'

Date: 05-25-2012

**APACHE
CORPORATION**



Located 570' FNL and 2240' FEL
Section 1, Township 20 South, Range 36 East,
N.M.P.M., Lea County, New Mexico.



P.O. Box 1786
1120 N. West County Rd.
Hobbs, New Mexico 88241
(575) 393-7316 -- Office
(575) 392-2206 -- Fax
basinsurveys.com

W.O. Number: KJG - 26634

Survey Date: 04-24-2012

Scale: 1" = 2 Miles

Date: 05-25-2012

APACHE
CORPORATION



JR PHILLIPS #12

*Located 570' FNL and 2240' FEL
Section 1, Township 20 South, Range 36 East,
N.M.P.M., Lea County, New Mexico.*

basin
surveys
focused on excellence
in the oilfield

P.O. Box 1786
1120 N. West County Rd.
Hobbs, New Mexico 88241
(575) 393-7316 - Office
(575) 392-2206 - Fax
basinsurveys.com

W.O. Number: KJG - 26634

Scale: 1" = 2000'

YELLOW TINT - USA LAND
BLUE TINT - STATE LAND
NATURAL COLOR - FEE LAND

APACHE
CORPORATION