

DISTRICT I
1625 N. French Dr., Hobbs, NM 88240

DISTRICT II
1301 W. Grand Avenue, Artesia, NM 88210

DISTRICT III
1000 Rio Brazos Rd., Aztec, NM 87410

DISTRICT IV
1220 S. St. Francis Dr., Santa Fe, NM 87505

HOBBS OGD

JUN 18 2012

RECEIVED

State of New Mexico
Energy, Minerals and Natural Resources Department

Form C-102
Revised July 16, 2010

Submit one copy to appropriate
District Office

OIL CONSERVATION DIVISION

1220 South St. Francis Dr.
Santa Fe, New Mexico 87505

WELL LOCATION AND ACREAGE DEDICATION PLAT

☐ AMENDED REPORT

API Number 30-025-40029	Pool Code 6660	Pool Name Blinebry O & G Co
Property Code 38884	Property Name ELLIOTT FEDERAL "7"	Well Number 4
GRID No. 873	Operator Name APACHE CORPORATION	Elevation 3516'

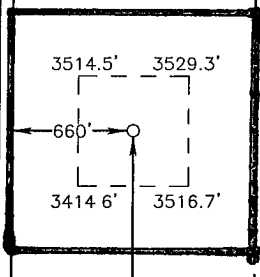
Surface Location

UL or lot No. L	Section 7	Township 21 S	Range 38 E	Lot Idn	Feet from the 1980	North/South line SOUTH	Feet from the 660	East/West line WEST	County LEA
---------------------------	---------------------	-------------------------	----------------------	---------	------------------------------	----------------------------------	-----------------------------	-------------------------------	----------------------

Bottom Hole Location If Different From Surface

UL or lot No.	Section	Township	Range	Lot Idn	Feet from the	North/South line	Feet from the	East/West line	County
Dedicated Acres 40	Joint or Infill	Consolidation Code	Order No.						

NO ALLOWABLE WILL BE ASSIGNED TO THIS COMPLETION UNTIL ALL INTERESTS HAVE BEEN CONSOLIDATED
OR A NON-STANDARD UNIT HAS BEEN APPROVED BY THE DIVISION

	SURFACE LOCATION Lat - N 32°29'30.06" Long - W 103°06'21.48" NMSPC- N 544783.105 E 919774.116 (NAD-83)
	SURFACE LOCATION Lat - N 32°29'29.64" Long - W 103°06'19.79" NMSPC- N 544724.084 E 878590.146 (NAD-27)
32.491567 103.105497	

OPERATOR CERTIFICATION

I hereby certify that the information contained herein is true and complete to the best of my knowledge and belief, and that this organization either owns a working interest or unleased mineral interest in the land including the proposed bottom hole location or has a right to drill this well at this location pursuant to a contract with an owner of such a mineral or working interest, or to a voluntary pooling agreement or a compulsory pooling order heretofore entered by the division.

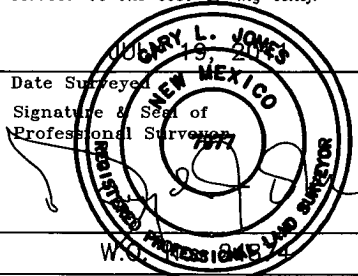
Sorina L. Flores 11/11/12
Signature Date

Sorina L. Flores
Printed Name

Sorina.Flores@apachecorp.com
Email Address

SURVEYOR CERTIFICATION

I hereby certify that the well location shown on this plat was plotted from field notes of actual surveys made by me or under my supervision, and that the same is true and correct to the best of my belief.



Date Surveyed
Signature & Seal of Professional Surveyor
W.C. PROFESSIONAL SURVEYOR

Certificate No. Gary L. Jones 7977

BASIN SURVEYS 24874

JUN 20 2012

DISTRICT I

1625 N. French Dr., Hobbs, NM 88240

DISTRICT II

1301 W. Grand Avenue, Artesia, NM 88210

DISTRICT III

1000 Rio Brazos Rd., Aztec, NM 87410

DISTRICT IV

1220 S. St. Francis Dr., Santa Fe, NM 87505

State of New Mexico
Energy, Minerals and Natural Resources Department

Form C-102

Revised July 16, 2010

Submit one copy to appropriate
District Office

OIL CONSERVATION DIVISION

1220 South St. Francis Dr.
Santa Fe, New Mexico 87505

WELL LOCATION AND ACREAGE DEDICATION PLAT

☐ AMENDED REPORT

API Number 30-025-40629	Pool Code 60240	Pool Name Tubb O & G (O)
Property Code 38884	Property Name ELLIOTT FEDERAL "7"	Well Number 4
OGRID No. 873	Operator Name APACHE CORPORATION	Elevation 3516'

Surface Location

UL or lot No.	Section	Township	Range	Lot Idn	Feet from the	North/South line	Feet from the	East/West line	County
L	7	21 S	38 E		1980	SOUTH	660	WEST	LEA

Bottom Hole Location If Different From Surface

UL or lot No.	Section	Township	Range	Lot Idn	Feet from the	North/South line	Feet from the	East/West line	County
Dedicated Acres 40	Joint or Infill	Consolidation Code	Order No.						

NO ALLOWABLE WILL BE ASSIGNED TO THIS COMPLETION UNTIL ALL INTERESTS HAVE BEEN CONSOLIDATED
OR A NON-STANDARD UNIT HAS BEEN APPROVED BY THE DIVISION

				<p>OPERATOR CERTIFICATION</p> <p>I hereby certify that the information contained herein is true and complete to the best of my knowledge and belief, and that this organization either owns a working interest or unleased mineral interest in the land including the proposed bottom hole location or has a right to drill this well at this location pursuant to a contract with an owner of such a mineral or working interest, or to a voluntary pooling agreement or a compulsory pooling order heretofore entered by the division.</p> <p><i>Sorina L. Flores</i> 11/11/12 Signature Date</p> <p>Sorina L. Flores Printed Name</p> <p>Sorina.Flores@apachecorp.com Email Address</p>			
<p>SURFACE LOCATION Lat - N 32°29'30.06" Long - W 103°06'21.48" NMSPCE - N 544783.105 E 919774.116 (NAD-83)</p> <p>SURFACE LOCATION Lat - N 32°29'29.64" Long - W 103°06'19.79" NMSPCE - N 544724.084 E 878590.146 (NAD-27)</p> <p>32.491567 103.105497</p>				<p>SURVEYOR CERTIFICATION</p> <p>I hereby certify that the well location shown on this plat was plotted from field notes of actual surveys made by me or under my supervision, and that the same is true and correct to the best of my belief.</p> <p>GARY L. JONES Date Surveyed</p> <p>GARY L. JONES Signature & Seal of Professional Surveyor</p> <p>GARY L. JONES Professional Surveyor</p> <p>Certificate No. Gary L. Jones 7977</p> <p>BASIN SURVEYS 24874</p>			

DISTRICT I
1625 N. French Dr., Hobbs, NM 88240

DISTRICT II
1301 W. Grand Avenue, Artesia, NM 88203

DISTRICT III
1000 Rio Brazos Rd., Aztec, NM 87412

DISTRICT IV
1220 S. St. Francis Dr., Santa Fe, NM 87505

HOBBS OCD

JUN 18 2012

RECEIVED

State of New Mexico
Energy, Minerals and Natural Resources Department

Form C-102
Revised July 18, 2010

Submit one copy to appropriate
District Office

OIL CONSERVATION DIVISION
1220 South St. Francis Dr.
Santa Fe, New Mexico 87505

WELL LOCATION AND ACREAGE DEDICATION PLAT

☐ AMENDED REPORT

API Number 30-025-40629	Pool Code 19190	Pool Name DrinKard
Property Code 38884	Property Name ELLIOTT FEDERAL "7"	Well Number 4
OGRID No. 873	Operator Name APACHE CORPORATION	Elevation 3516'

Surface Location

UL or lot No. L	Section 7	Township 21 S	Range 38 E	Lot Idn	Feet from the 1980	North/South line SOUTH	Feet from the 660	East/West line WEST	County LEA
---------------------------	---------------------	-------------------------	----------------------	---------	------------------------------	----------------------------------	-----------------------------	-------------------------------	----------------------

Bottom Hole Location If Different From Surface

UL or lot No.	Section	Township	Range	Lot Idn	Feet from the	North/South line	Feet from the	East/West line	County
Dedicated Acres 40	Joint or Infill	Consolidation Code	Order No.						

NO ALLOWABLE WILL BE ASSIGNED TO THIS COMPLETION UNTIL ALL INTERESTS HAVE BEEN CONSOLIDATED
OR A NON-STANDARD UNIT HAS BEEN APPROVED BY THE DIVISION

	<p>SURFACE LOCATION Lat - N 32°29'30.06\" Long - W 103°06'21.48\" NMSPCE- N 544783.105 E 919774.116 (NAD-83)</p> <p>SURFACE LOCATION Lat - N 32°29'29.64\" Long - W 103°06'19.79\" NMSPCE- N 544724.084 E 878590.146 (NAD-27)</p> <p>32.491567 103.105497</p>	<p>OPERATOR CERTIFICATION</p> <p>I hereby certify that the information contained herein is true and complete to the best of my knowledge and belief, and that this organization either owns a working interest or unleased mineral interest in the land including the proposed bottom hole location or has a right to drill this well at this location pursuant to a contract with an owner of such a mineral or working interest, or to a voluntary pooling agreement or a compulsory pooling order heretofore entered by the division.</p> <p><i>Sorina L. Flores</i> 11/11/12 Signature Date</p> <p>Sorina L. Flores Printed Name</p> <p>Sorina.Flores@apachecorp.com Email Address</p> <p>SURVEYOR CERTIFICATION</p> <p>I hereby certify that the well location shown on this plat was plotted from field notes of actual surveys made by me or under my supervision, and that the same is true and correct to the best of my belief.</p> <p></p> <p>Date Surveyed Signature & Seal of Professional Surveyor W.C. MESSIAH</p> <p>Certificate No. Gary L. Jones 7977</p> <p>BASIN SURVEYS 24874</p>
--	---	--

DISTRICT I
1625 N. French Dr., Hobbs, NM 88241
DISTRICT II
1301 W. Grand Avenue, Artesia, NM 88210
DISTRICT III
1000 Rio Brazos Rd., Aztec, NM 87410
DISTRICT IV
1220 S. St. Francis Dr., Santa Fe, NM 87505

State of New Mexico
Energy, Minerals and Natural Resources Department

Form C-102
Revised July 16, 2010

Submit one copy to appropriate
District Office

OIL CONSERVATION DIVISION

1220 South St. Francis Dr.
Santa Fe, New Mexico 87505

WELL LOCATION AND ACREAGE DEDICATION PLAT

☐ AMENDED REPORT

API Number 30-025-40629	Pool Code 62700	Pool Name Wantz; ABO
Property Code 38884	Property Name ELLIOTT FEDERAL "7"	Well Number 4
OGRID No. 873	Operator Name APACHE CORPORATION	Elevation 3516'

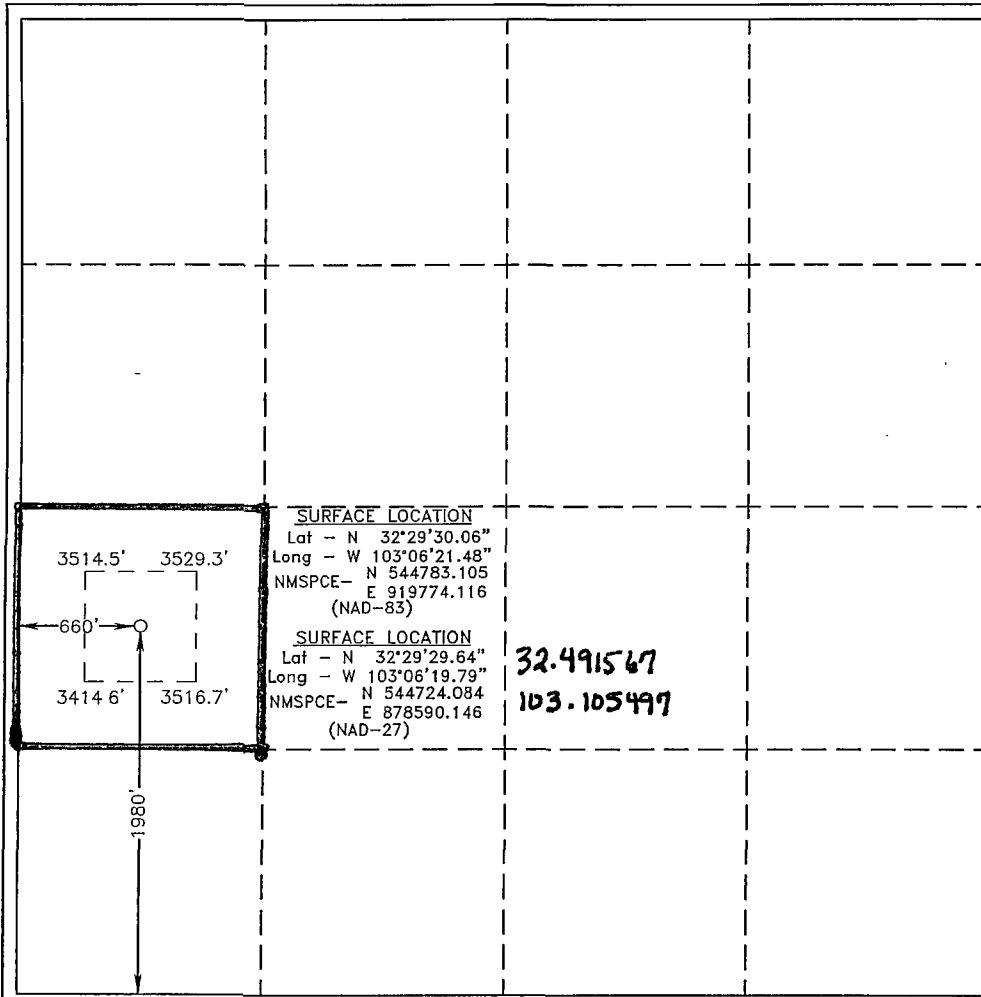
Surface Location

UL or lot No. L	Section 7	Township 21 S	Range 38 E	Lot Idn	Feet from the 1980	North/South line SOUTH	Feet from the 660	East/West line WEST	County LEA
---------------------------	---------------------	-------------------------	----------------------	---------	------------------------------	----------------------------------	-----------------------------	-------------------------------	----------------------

Bottom Hole Location If Different From Surface

UL or lot No.	Section	Township	Range	Lot Idn	Feet from the	North/South line	Feet from the	East/West line	County
Dedicated Acres 40	Joint or Infill	Consolidation Code	Order No.						

NO ALLOWABLE WILL BE ASSIGNED TO THIS COMPLETION UNTIL ALL INTERESTS HAVE BEEN CONSOLIDATED
OR A NON-STANDARD UNIT HAS BEEN APPROVED BY THE DIVISION



OPERATOR CERTIFICATION

I hereby certify that the information contained herein is true and complete to the best of my knowledge and belief, and that this organization either owns a working interest or unleased mineral interest in the land including the proposed bottom hole location or has a right to drill this well at this location pursuant to a contract with an owner of such a mineral or working interest, or to a voluntary pooling agreement or a compulsory pooling order heretofore entered by the division.

Sorina L. Flores 11/11/12
Signature Date

Sorina L. Flores
Printed Name

Sorina.flores@apachecorp.com
Email Address

SURVEYOR CERTIFICATION

I hereby certify that the well location shown on this plat was plotted from field notes of actual surveys made by me or under my supervision and that the same is true and correct to the best of my belief.

GARY L. JONES
Date Surveyed
Signature & Seal of Professional Surveyor
W.C. PROFESSIONAL SURVEYOR

Certificate No. Gary L. Jones 7977

BASIN SURVEYS 24874