

DISTRICT I  
1625 N. French Dr., Hobbs, NM 88240

DISTRICT II  
1301 W. Grand Avenue, Artesia, NM 88201

DISTRICT III  
1000 Rio Brazos Rd., Aztec, NM 87410

DISTRICT IV  
1220 S. St. Francis Dr., Santa Fe, NM 87505

HOBBS OCD

JUN 21 2012

RECEIVED

State of New Mexico  
Energy, Minerals and Natural Resources Department

OIL CONSERVATION DIVISION

1220 South St. Francis Dr.  
Santa Fe, New Mexico 87505

Form C-102  
Revised October 12, 2005

Submit to Appropriate District Office  
State Lease - 4 Copies  
Fee Lease - 3 Copies

WELL LOCATION AND ACREAGE DEDICATION PLAT

☐ AMENDED REPORT

API Number <b>30-025-40636</b>	Pool Code 37570	Pool Name LEA-BONE SPRING
Property Code <b>39275</b>	Property Name MUD SLIDE SLIM "15" FEDERAL	Well Number 2
GRID No. 249099	Operator Name CAZA OPERATING, LLC.	Elevation 3639'

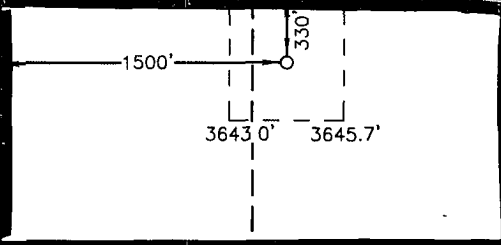

Surface Location

UL or lot No. C	Section 15	Township 20 S	Range 34 E	Lot Idn	Feet from the 330	North/South line NORTH	Feet from the 1500	East/West line WEST	County LEA
--------------------	---------------	------------------	---------------	---------	----------------------	---------------------------	-----------------------	------------------------	---------------

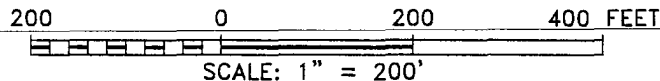
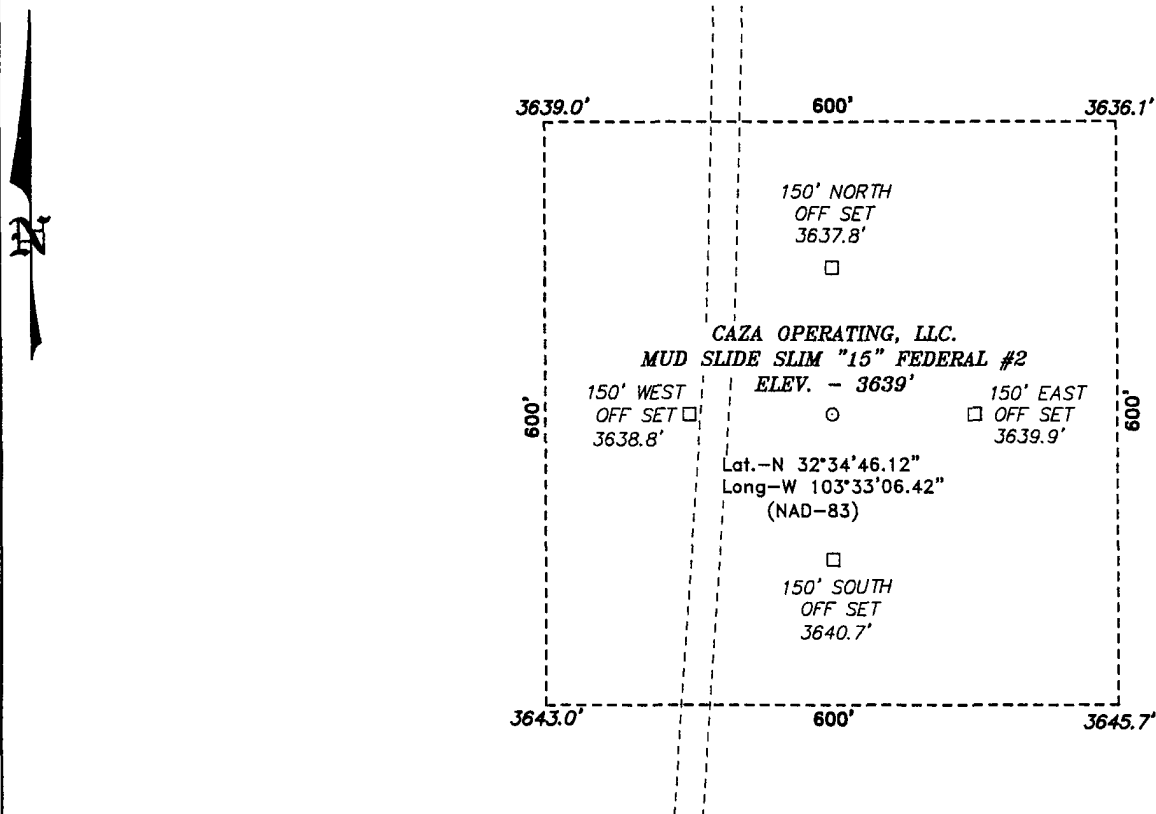
Bottom Hole Location If Different From Surface

UL or lot No.	Section	Township	Range	Lot Idn	Feet from the	North/South line	Feet from the	East/West line	County
Dedicated Acres 80	Joint or Infill	Consolidation Code	Order No.						

NO ALLOWABLE WILL BE ASSIGNED TO THIS COMPLETION UNTIL ALL INTERESTS HAVE BEEN CONSOLIDATED  
OR A NON-STANDARD UNIT HAS BEEN APPROVED BY THE DIVISION

	<p><u>SURFACE LOCATION</u> Lat - N32°34'46.12" Long - W103°33'06.42" NMSPEC - N 575425.718 E 782080.338 (NAD-83)</p>	<p><b>OPERATOR CERTIFICATION</b></p> <p>I hereby certify that the information contained herein is true and complete to the best of my knowledge and belief, and that this organization either owns a working interest or unleased mineral interest in the land including the proposed bottom hole location pursuant to a contract with an owner of such a mineral or working interest, or to a voluntary pooling agreement or a compulsory pooling order heretofore entered by the division.</p> <p> Signature _____ Date 06/21/12 Joe T. Janica Printed Name</p> <p><b>SURVEYOR CERTIFICATION</b></p> <p>I hereby certify that the well location shown on this plat was plotted from field notes of actual surveys made by me or under my supervision, and that the same is true and correct to the best of my belief.</p> <p>OCTOBER 14, 2008</p> <p>Date Surveyed _____ Signature &amp; Seal of Professional Surveyor _____ Professional Surveyor _____ W.D. No. 2049F Certificate No. Gary L. Jones 7977 BASIN SURVEYS</p>
---	--	---

SECTION 15, TOWNSHIP 20 SOUTH, RANGE 34 EAST, N.M.P.M.,  
LEA COUNTY, NEW MEXICO.



Directions to Location:

FROM THE JUNCTION OF HWY 62-180 AND SKEEN,  
GO SOUTH ON SKEEN TO FIRST LEASE ROAD, ON  
LEASE ROAD GO 3.6 MILES TO PROPOSED LOCATION.

**BASIN SURVEYS** P.O. BOX 1786-HOBBS, NEW MEXICO

W.O. Number: 20491

Drawn By: J. SMALL

Date: 10-14-2008

Disk: JMS 20491

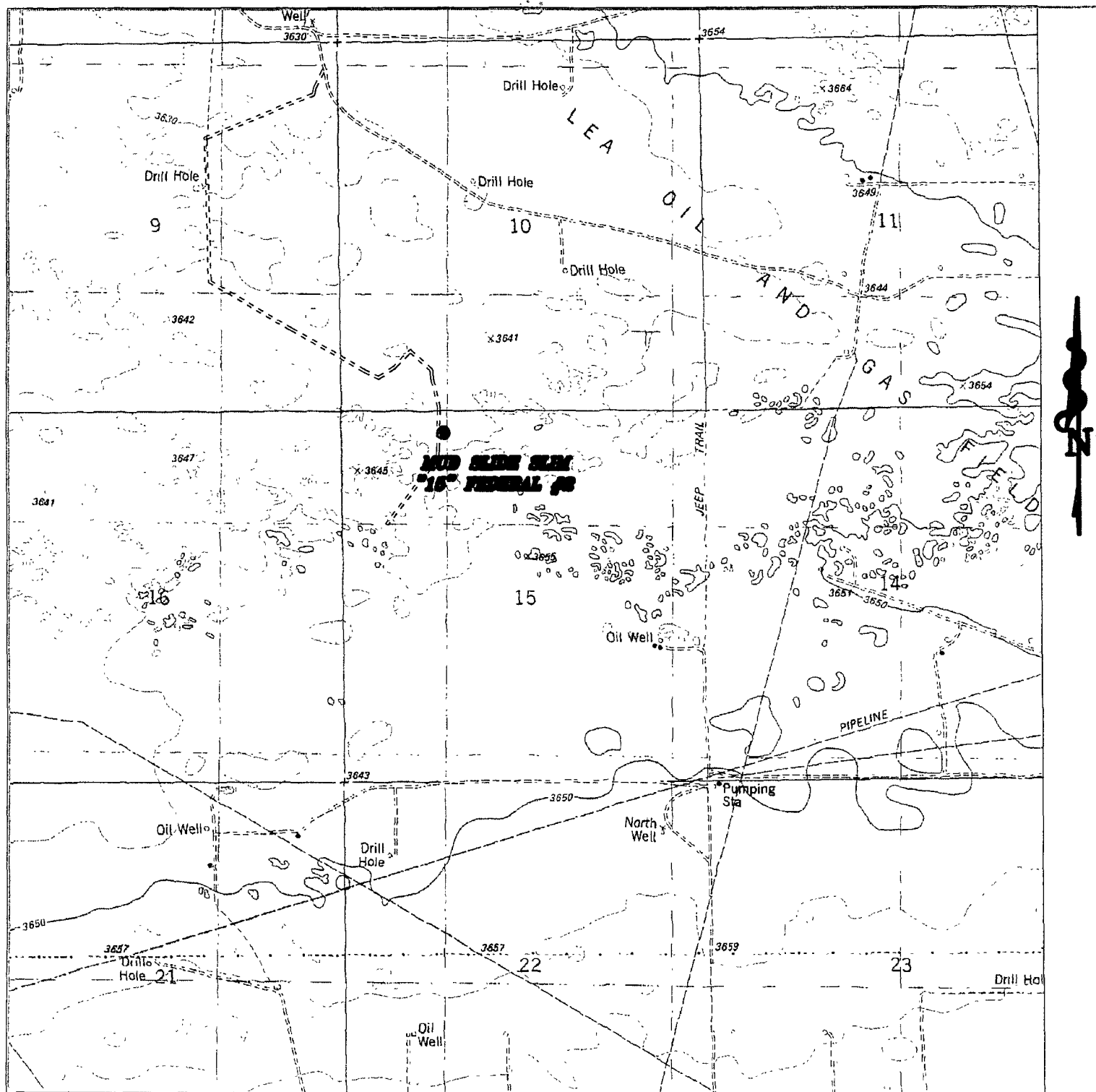
**CAZA OPERATING, LLC.**

REF: MUD SLIDE SLIM "15" FEDERAL #2 / WELL PAD TOPO

THE MUD SLIDE SLIM "15" FEDERAL #2 LOCATED 330' FROM  
THE NORTH LINE AND 1500' FROM THE WEST LINE OF  
SECTION 15, TOWNSHIP 20 SOUTH, RANGE 34 EAST,  
N.M.P.M., LEA COUNTY, NEW MEXICO.

Survey Date: 10-14-2008

Sheet 1 of 1 Sheets



## **MUD SLIDE SLIM "15" FEDERAL #2**

Located 330' FNL and 1500' FWL

Section 15, Township 20 South, Range 34 East,  
N.M.P.M., Lea County, New Mexico.



focused on excellence  
in the oilfield

P.O. Box 1786  
1120 N. West County Rd.  
Hobbs, New Mexico 88241  
(575) 393-7316 - Office  
(575) 392-2206 - Fax  
basinsurveys.com

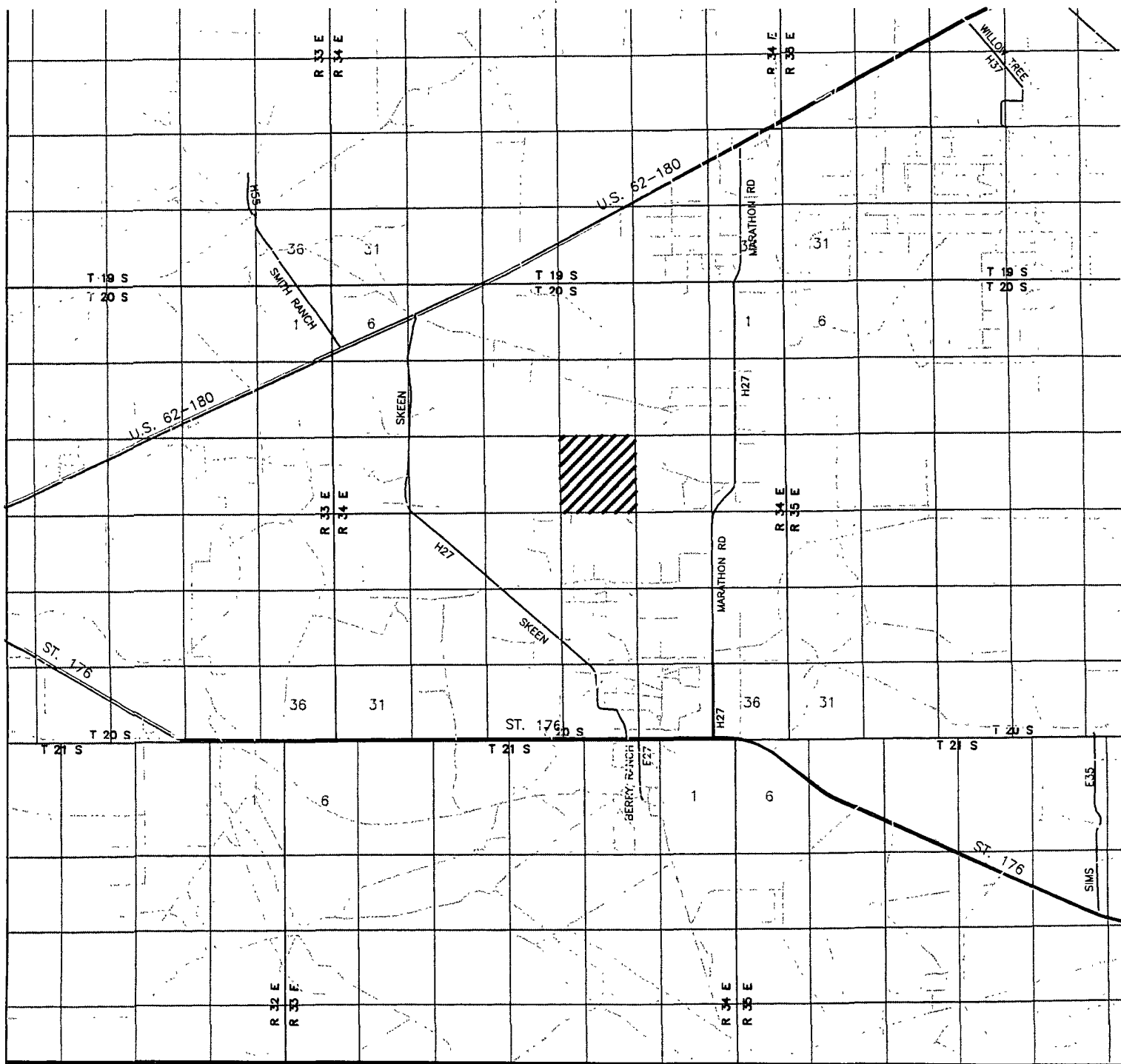
W.O. Number: JMS 20491

Survey Date: 10-14-2008

Scale: 1" = 2000'

Date: 10-14-2008

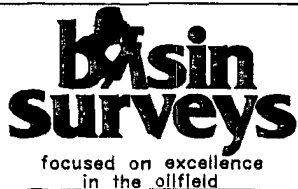
**CAZA  
OPERATING,  
LLC.**



## MUD SLIDE SLIM "15" FEDERAL #2

Located 330' FNL and 1500' FWL

Section 15, Township 20 South, Range 34 East,  
N.M.P.M., Lea County, New Mexico.



P.O. Box 1786  
1120 N. West County Rd.  
Hobbs, New Mexico 88241  
(575) 393-7316 - Office  
(575) 392-2206 - Fax  
basinsurveys.com

W.O. Number: JMS 20491

Survey Date: 10-14-2008

Scale: 1" = 2 MILES

Date: 10-14-2008

**CAZA**  
**OPERATING,**  
**LLC.**