

DISTRICT I  
1625 N. French Dr., Hobbs, NM 88240  
Phone (575) 393-8181 Fax: (575) 393-0720

DISTRICT II  
1301 W. Grand Avenue, Artesia, NM 88210  
Phone (505) 748-1283 Fax: (505) 334-8170

DISTRICT III  
1000 Rio Brazos Rd., Aztec, NM 87410  
Phone (505) 334-8178 Fax: (505) 748-9720

DISTRICT IV  
1220 S. St. Francis Dr., Santa Fe, NM 87505  
Phone (505) 478-3480 Fax: (505) 478-3482

State of New Mexico  
Energy, Minerals and Natural Resources Department

**OIL CONSERVATION DIVISION**  
1220 South St. Francis Dr.  
Santa Fe, New Mexico 87505

HOBBS OCD

JUN 26 2012

Form C-102  
Revised August 1, 2011  
Submit one copy to appropriate  
District Office

RECEIVED

AMENDED REPORT

**WELL LOCATION AND ACREAGE DEDICATION PLAT**

API Number 30-025-40374	Pool Code 5535	Pool Name Berry; Bone Spring, North
Property Code 17549	Property Name BERRY APN STATE	Well Number 2H
OGRID No. 025575	Operator Name YATES PETROLEUM CORP.	Elevation 3723'

**Surface Location**

UL or lot No.	Section	Township	Range	Lot Idn	Feet from the	North/South line	Feet from the	East/West line	County
LOT 13	5	21 S	34 E		2957	SOUTH	660	WEST	LEA

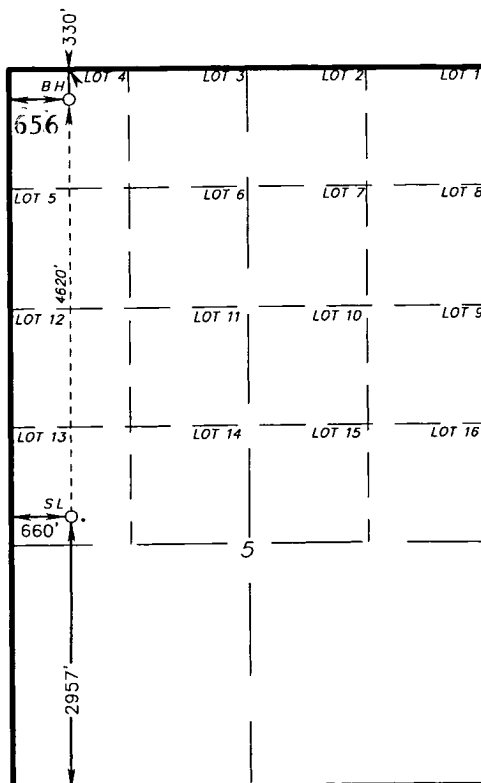
**Bottom Hole Location If Different From Surface**

UL or lot No.	Section	Township	Range	Lot Idn	Feet from the	North/South line	Feet from the	East/West line	County
LOT 4	5	21 S	34 E		7576 330	<del>S</del> NORTH	629 650	WEST	LEA
Dedicated Acres 160	Joint or Infill	Consolidation Code	Order No.						

NO ALLOWABLE WILL BE ASSIGNED TO THIS COMPLETION UNTIL ALL INTERESTS HAVE BEEN CONSOLIDATED  
OR A NON-STANDARD UNIT HAS BEEN APPROVED BY THE DIVISION

**PROPOSED BOTTOM  
HOLE LOCATION**  
Lat - N 32°31'17.19"  
Long - W 103°29'54.50"  
NMPSC- N 554439.168  
E 798663.098  
(NAD-83)

**SURFACE LOCATION**  
Lat - N 32°30'31.49"  
Long - W 103°29'54.51"  
NMPSC- N 549820.168  
E 798698.291  
(NAD-83)



**OPERATOR CERTIFICATION**

I hereby certify that the information contained herein is true and complete to the best of my knowledge and belief, and that this organization either owns a working interest or unleased mineral interest in the land including the proposed bottom hole location or has a right to drill this well at this location pursuant to a contract with an owner of such a mineral or working interest, or to a voluntary pooling agreement or a compulsory pooling order heretofore entered by the Division.

*Tina Huerta* 6/21/12  
Signature Date

Tina Huerta

Printed Name

tinah@yatespetroleum.com

Email Address

**SURVEYOR CERTIFICATION**

I hereby certify that the well location shown on this plat was plotted from field notes of actual surveys made by me or under my supervision, and that the same is true and correct to the best of my belief.

DATE 6/25/2012

Date Surveyed

Signature of Professional Surveyor

Certificate No. Gary L. Jones 7977

BASIN SURVEYS 25389

JUL 03 2012