

DISTRICT I  
1625 N. Frueh Dr., Hobbs, NM 88240  
DISTRICT II  
1301 W. Grand Avenue, Atesia, NM 88210  
DISTRICT III  
1000 Rio Brazos Road, Aztec, NM 87410  
DISTRICT IV  
2040 South Pacheco, Santa Fe, NM 87505

STATE OF NEW MEXICO  
Energy, Minerals and Natural Resources Department

Form C-101  
May 27, 2004

Submit to Appropriate District Office

HOBBS OGD

OIL CONSERVATION DIVISION  
1220 South St. Francis Dr.  
Santa Fe, NM 87505

AMENDED REPORT

JUL 03 2012

APPLICATION FOR RECEIVED TO DRILL, RE-ENTER, DEEPEN, PLUGBACK, OR ADD A ZONE

1 Operator Name and Address PALADIN ENERGY CORP. 10290 Monroe Drive, Suite 301 Dallas, Texas 75229		2 OGRID Number 164070
4 Property Code 39310	5 Property Name State BTA	3 API Number 30025-40669
9 Proposed Pool 1 Bagley, Siluro-Devonian		6 Well No 4
10 Proposed Pool 2		

7 Surface Location

UL or lot No	Section	Township	Range	Lot Ind	Feet from the	North/South Line	Feet from the	East/West Line	County
G	2	12-S	33-E		2230	North	1980	East	Lea

8 Proposed Bottom Hole Location If Different From Surface

UL or lot No	Section	Township	Range	Lot Ind	Feet from the	North/South Line	Feet from the	East/West Line	County
G	2	12-S	33-E		2130	North	1980	East	Lea

Additional Well Information

11 Work Type Code N	12 Well Type Code O	13 Cable/Rotary Rotary	14 Lease Type Code S	15 Ground Level Elevation 4236'
16 Multiple No	17 Proposed depth 11,200'	18 Formation Devonian	19 Contractor	20 Spud Date

Depth to Groundwater approx 68'		Distance from nearest fresh water well		Distance from nearest surface water:	
Pit: Liner Synthetic <input type="checkbox"/>	12 mils thick Clay <input type="checkbox"/>	Pit Volume:		Drilling Method: Fresh Water <input type="checkbox"/>	
Closed-Loop System <input checked="" type="checkbox"/>		Brine <input checked="" type="checkbox"/>		Disel/Oil-Based <input type="checkbox"/>	Gas/Air <input type="checkbox"/>

21 Proposed Casing and Cement Program

Hole Size	Casing Size	Casing weight/foot	Setting Depth	Sacks Cement	Estimated TOC
17-1/2"	13-3/8"	48#	400'	500	Sur
12-1/4"	9-5/8"	40#	3700'	1600	Sur
8-3/4"	7"	26# & 29#	11,200'	1400 2 stages	7,000' & 3,800'

22 Describe the proposed program. If this application is to DEEPEN or PLUG BACK give the data on the present productive zone and proposed new productive zone. Describe the blowout prevention program, if any. Use additional sheets if necessary.  
Drill 17-1/2" hole to 400' and set 13-3/8" conductor, cement to surface. Drill out with 12-1/4" bit to 3,800' (+,-) and set 8-5/8" surface casing and cement to surface. Drill 8-3/4" hole to 11,200' (+,-), set 7" casing and cement with two stages to bring tops to approximately 7,000' and from 7,000' to 3,800'. (Closed Loop System.) R/D Drilling Rig MOL.

R/U completion Rig, drill out cement, circulate and clean hole, Displace Mud w/ completion fluids.  
Perforate Devonian formation, perform acid treatment job on perms w/ approximately 7,000 gallons acid.  
Run Electric Submersible Pump assembly and place on production.

BOP - 11" Hydraulic Dual Ram (10M), Blind & Pipe

Permit Expires 2 Years From Approval  
Date Unless Drilling Underway

HOBBS OGD

JUL 03 2012

RECEIVED

47 I hereby certify that the rules of the Oil Conservation Division have been complied with and that the information given above is true and complete to the best of my knowledge and belief. I further certify that the drill pit will be constructed according NMOCD guideline X, a general permit     , Or an (attached) alternative OGD-approved plan     

Printed name: David Plaisance

Title: V.P. Exploration & Production

E-mail Address: dplaisance@paladinenergy.com

Date: 7/3/2012 Phone: 214-654-0132

OIL CONSERVATION DIVISION

Approved by:

  
Title: PETROLEUM ENGINEER

Approval Date: JUL 03 2012

Expiration Date: JUL 03 2014

Conditions of Approval:

District I  
1625 N. French Dr., Hobbs, NM 88240  
Phone: (505) 393-6161 Fax (505) 393-0720  
District II  
811 S. First St., Artesia, NM 88210  
Phone: (505) 748-1283 Fax (505) 748-9720  
District III  
1000 Rio Brazos Road, Aztec, NM 87410  
Phone: (505) 334-6178 Fax (505) 334-6170  
District IV  
1220 S. St. Francis Dr., Santa Fe, NM 87505  
Phone: (505) 476-3460 Fax (505) 476-3462

**HOBBS OCD**

**JUL 03 2012**

**RECEIVED**

State of New Mexico  
Energy, Minerals & Natural Resources Department  
OIL CONSERVATION DIVISION  
1220 South St. Francis Dr.  
Santa Fe, NM 87505

Form C-102  
Revised August 1, 2011  
Submit one copy to appropriate  
District Office

☐ AMENDED REPORT

**WELL LOCATION AND ACREAGE DEDICATION PLAT**

API Number <b>30025-40669</b>	Pool Code <b>3990</b>	Pool Name <b>Bagley; Siluro Devonian</b>
Property Code <b>39310</b>	Property Name <b>STATE BTA</b>	Well Number <b>4</b>
OGRID No. <b>164070</b>	Operator Name <b>PALADIN ENERGY CORP.</b>	Elevation <b>4236.3'</b>

**Surface Location**

UL or lot no.	Section	Township	Range	Lot Idn	Feet from the	North/South line	Feet from the	East/West line	County
G	2	12 SOUTH	33 EAST, N.M.P.M.		2230'	NORTH	1980'	EAST	LEA

**Bottom Hole Location If Different From Surface**

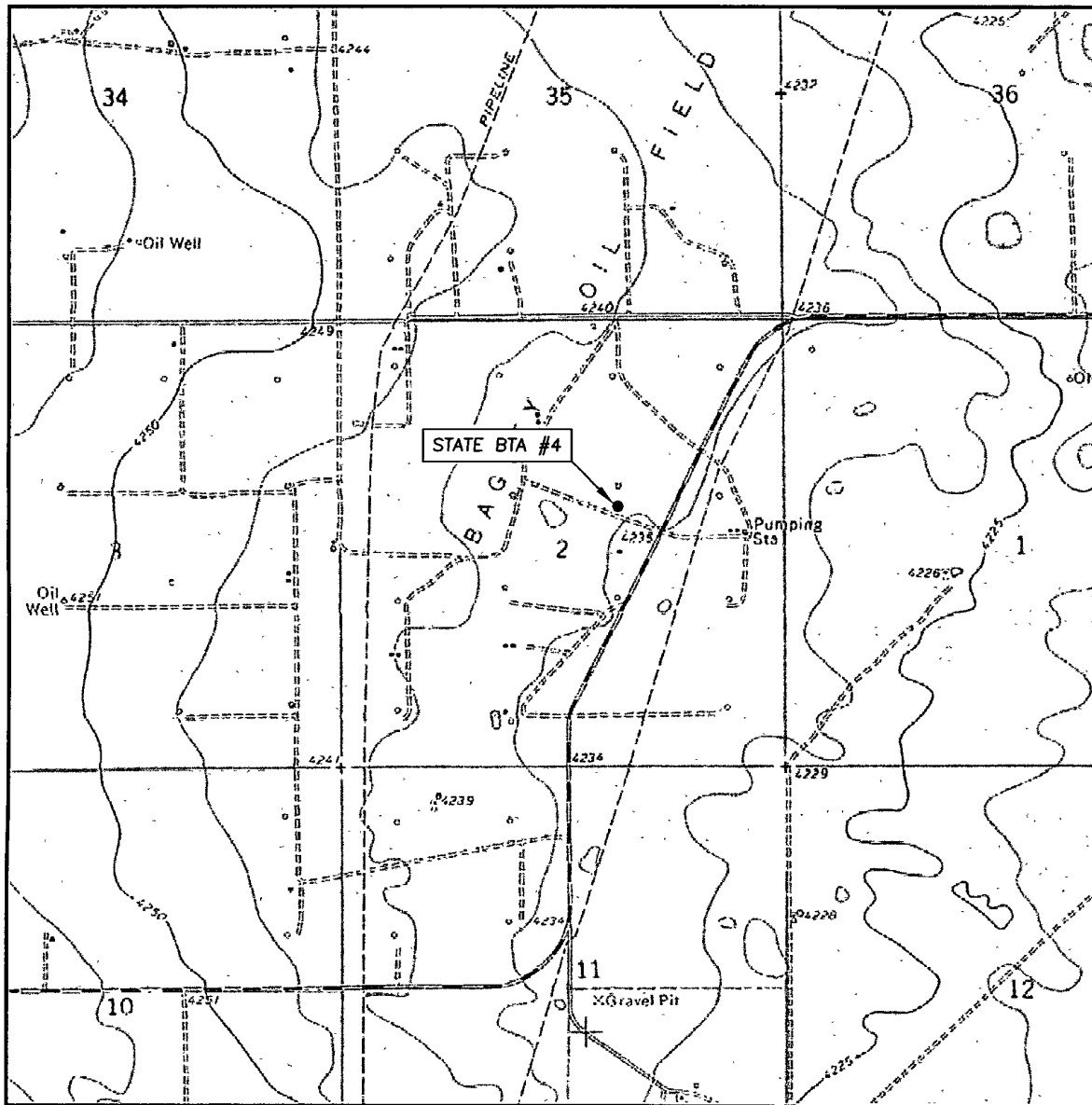
UL or lot no.	Section	Township	Range	Lot Idn	Feet from the	North/South line	Feet from the	East/West line	County
G	2	12 SOUTH	33 EAST, N.M.P.M.		2130'	NORTH	1980'	EAST	LEA

Dedicated Acres	Joint or Infill	Consolidation Code	Order No.

No allowable will be assigned to this completion until all interests have been consolidated or a non-standard unit has been approved by the division.

	<p><b>OPERATOR CERTIFICATION</b></p> <p>I hereby certify that the information contained herein is true and complete to the best of my knowledge and belief, and that this organization either owns a working interest or unleased mineral interest in the land including the proposed bottom hole location or has a right to drill this well at this location pursuant to a contract with an owner of such a mineral or working interest, or to a voluntary pooling agreement or a compulsory pooling order heretofore entered by the division.</p> <p><i>[Signature]</i> Signature Date</p> <p><b>David Plaisance</b> 7/2/12 Printed Name</p> <p>dplaisance@paladinenergy.com E-mail Address</p> <p><b>SURVEYOR CERTIFICATION</b></p> <p>I hereby certify that the well location shown on this plat was plotted from field notes of actual surveys made by me or under my supervision and that the same is true and correct to the best of my belief.</p> <p><b>JUNE 15 2012</b> Date of Survey</p> <p><i>[Signature]</i> Signature and Seal of Professional Surveyor</p> <p><b>Terry J. Paul</b> 6/26/2012 Certificate Number 15079</p> <p>WO# 120613WL (KA)</p>
--	--

# LOCATION VERIFICATION MAP



SCALE: 1" = 2000'

CONTOUR INTERVAL: 10'

SEC. 2 TWP. 12-S RGE. 33-E

SURVEY N.M.P.M.

COUNTY LEA

DESCRIPTION 2230' FNL & 1980' FEL

ELEVATION 4236.3'

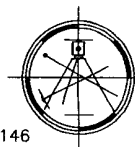
OPERATOR PALADIN ENERGY CORP.

LEASE STATE BTA #4

U.S.G.S. TOPOGRAPHIC MAP  
DALLAS STORE, N.M.

Asel Surveying

P.O. BOX 393 - 310 W. TAYLOR  
HOBBS, NEW MEXICO - 575-393-9146



The map displays a grid of land parcels, likely for a survey or land management project. The grid is composed of squares, each containing a number. The numbers are arranged in a pattern that suggests a coordinate system. The map includes several labels for specific locations and features:

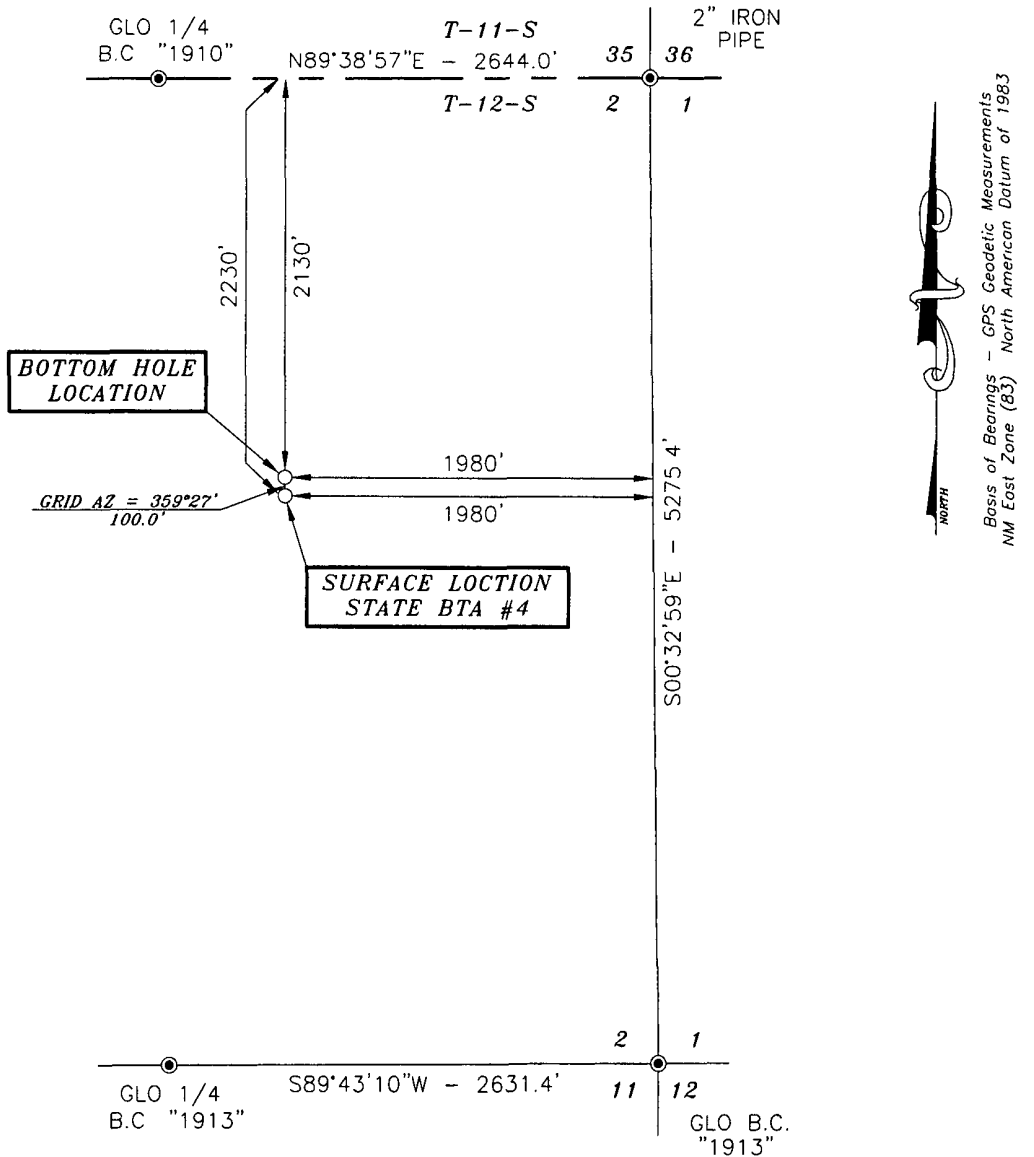
- Top Left:** "SOLDIER HILL" (multiple instances), "MOORE", "AMERADA", "MATHERS", "BLURRO", "NINE RANCH", "FAR", "CHAMBERLAIN", "L. Y. HAN", "U.S. 380", "ST. 457", "STATE BTA #4", "LACREY", "COYOTE LANE", "FRIER", "MADLIN", "SIMONOLA VALLEY", "SARTIN".
- Top Center:** "STATE BTA #4" (with a black dot and arrow pointing to it).
- Top Right:** "BLURRO", "NINE RANCH", "FAR", "CHAMBERLAIN", "L. Y. HAN", "U.S. 380", "ST. 457", "STATE BTA #4", "LACREY", "COYOTE LANE", "FRIER", "MADLIN", "SIMONOLA VALLEY", "SARTIN".
- Bottom Left:** "SOLDIER HILL", "MOORE", "AMERADA", "MATHERS", "BLURRO", "NINE RANCH", "FAR", "CHAMBERLAIN", "L. Y. HAN", "U.S. 380", "ST. 457", "STATE BTA #4", "LACREY", "COYOTE LANE", "FRIER", "MADLIN", "SIMONOLA VALLEY", "SARTIN".
- Bottom Center:** "COYOTE LANE", "FRIER", "MADLIN", "SIMONOLA VALLEY", "SARTIN".
- Bottom Right:** "BLURRO", "NINE RANCH", "FAR", "CHAMBERLAIN", "L. Y. HAN", "U.S. 380", "ST. 457", "STATE BTA #4", "LACREY", "COYOTE LANE", "FRIER", "MADLIN", "SIMONOLA VALLEY", "SARTIN".

The map also shows a network of roads and a diagonal line running across the upper portion. The labels are in various orientations, some horizontal and some vertical, indicating the direction of the roads or features. The overall layout suggests a detailed survey or land management plan for a specific area in the Texas Panhandle.

SCALE: 1" = 2 MILES

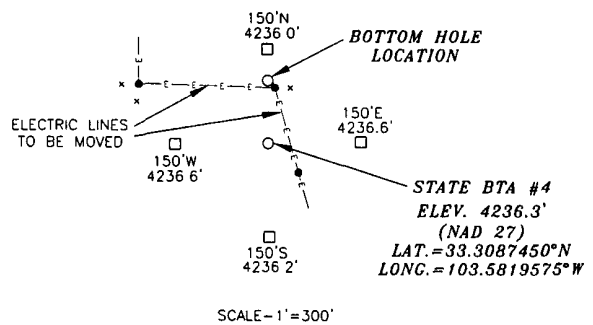
DIRECTIONS BEGINNING IN TATUM AT THE INTERSECTION OF ST. HWY. #206 AND US HWY. #380, GO WEST/NORTHWEST ON US HWY. #380 FOR 15.2 MILES, TURN LEFT ON ST. HWY. #457 AND GO SOUTH FOR 1.2 MILES, GO WEST FOR 1.0 MILES, GO SOUTHWEST FOR 0.4 MILES, TURN RIGHT ON CALICHE ROAD AND GO WEST FOR 0.2 MILES TO LOCATION.

SECTION 2, TOWNSHIP 12 SOUTH, RANGE 33 EAST, N.M.P.M.,  
LEA COUNTY  
NEW MEXICO



● PALADIN ENERGY CORP.  
STATE BTA #3

DRIVING DIRECTIONS  
BEGINNING IN TATUM AT THE INTERSECTION  
OF ST HWY #206 AND US HWY. #380, GO  
WEST/NORTHWEST ON US HWY. #380 FOR  
15.2 MILES, TURN LEFT ON ST. HWY. #457  
AND GO SOUTH FOR 1.2 MILES, GO WEST  
FOR 1.0 MILES, GO SOUTHWEST FOR 0.4  
MILES, TURN RIGHT ON CALICHE ROAD AND  
GO WEST FOR 0.2 MILES TO LOCATION



SCALE - 1" = 300'



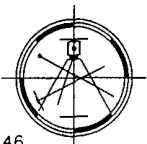
SURVEYORS CERTIFICATE

I, TERRY J. ASEL, NEW MEXICO PROFESSIONAL SURVEYOR  
NO. 15079, DO HEREBY CERTIFY THAT I CONDUCTED AND AM  
RESPONSIBLE FOR THIS SURVEY, THAT THIS SURVEY IS  
TRUE AND CORRECT TO THE BEST OF MY KNOWLEDGE AND  
BELIEF, AND MEETS THE "MINIMUM STANDARDS FOR  
SURVEYING IN NEW MEXICO" AS ADOPTED BY THE NEW  
MEXICO STATE BOARD OF REGISTRATION FOR  
PROFESSIONAL ENGINEERS AND SURVEYORS.

*Terry J. Asel* 6/26/2012  
Terry J. Asel N.M. R.P.L.S. No. 15079

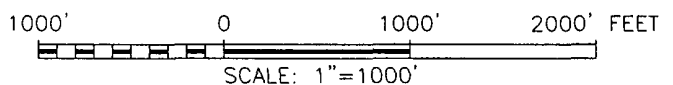
Asel Surveying

P.O. BOX 393 - 310 W. TAYLOR  
HOBBS, NEW MEXICO - 575-393-9146



LEGEND

- - DENOTES FOUND MONUMENT AS NOTED
- - DENOTES POLE
- x - DENOTES ANCHOR



PALADIN ENERGY CORP.

STATE BTA #4 LOCATED AT  
2230' FNL & 1980' FEL IN SECTION 2,  
TOWNSHIP 12 SOUTH, RANGE 33 EAST,  
N.M.P.M., LEA COUNTY, NEW MEXICO

Survey Date: 06/13/12	Sheet 1 of 1 Sheets
W.O. Number: 120613WL	Drawn By: KA Rev:
Date: 06/25/12	120613WL Scale: 1" = 1000'