

DISTRICT I
1625 N. French Dr., Hobbs, NM 88240

DISTRICT II
1301 W. Grand Avenue, Artesia, NM 88210

DISTRICT III
1000 Rio Brazos Rd., Aztec, NM 87410

DISTRICT IV
1220 S. St. Francis Dr., Santa Fe, NM 87505

State of New Mexico
Energy, Minerals and Natural Resources Department

Form C-102
Revised July 16, 2010
Submit one copy to appropriate
District Office

OIL CONSERVATION DIVISION
1220 South St. Francis Dr.
Santa Fe, New Mexico 87505

JUL 15 2011

WELL LOCATION AND ACREAGE DEDICATION PLAT

RECEIVED AMENDED REPORT

API Number 30-025-40192	Pool Code 97838	Pool Name WC-025 6.05 32.08 P; Bone Spring Upper Shale
Property Code 38717	Property Name BATTLE AXE FEDERAL	Well Number 1H
GRID No. 231429	Operator Name MANZANO, LLC	Elevation 3093

Surface Location

UL or lot No.	Section	Township	Range	Lot Idn	Feet from the	North/South line	Feet from the	East/West line	County
LOT 32	34	26 S	32 E		400	SOUTH	1980	EAST	LEA

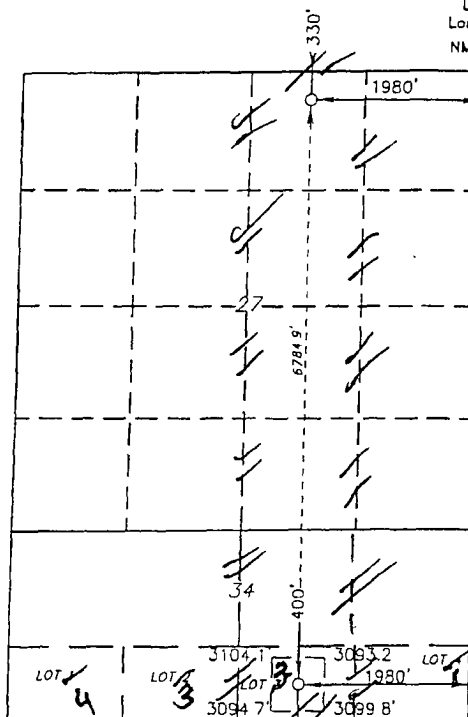
Bottom Hole Location If Different From Surface

UL or lot No.	Section	Township	Range	Lot Idn	Feet from the	North/South line	Feet from the	East/West line	County
B	27	26 S	32 E		330	NORTH	1980	EAST	LEA

Dedicated Acres	Joint or Infill	Consolidation Code	Order No.
240	per operator	JH 7/8/11	

NO ALLOWABLE WILL BE ASSIGNED TO THIS COMPLETION UNTIL ALL INTERESTS HAVE BEEN CONSOLIDATED
OR A NON-STANDARD UNIT HAS BEEN APPROVED BY THE DIVISION

BOTTOM HOLE LOCATION
Lat - N 32°01'11.93"
Long - W 103°39'38.12"
NMSPC- N 371656.7
E 749837.0
(NAD-83)



PROPOSED SURFACE
HOLE LOCATION
Lat - N 32°00'04.79"
Long - W 103°39'38.15"
NMSPC- N 364871.937
E 749876.917
(NAD-83)

OPERATOR CERTIFICATION

I hereby certify that the information contained herein is true and complete to the best of my knowledge and belief, and that this organization either owns a working interest or unleased mineral interest in the land including the proposed bottom hole location or has a right to drill this well at this location pursuant to a contract with an owner of such a mineral or working interest, or to a voluntary pooling agreement or a compulsory pooling order heretofore entered by the division.

Signature: *[Signature]* Date: 4/25/11

Printed Name

Email Address

SURVEYOR CERTIFICATION

I hereby certify that the well location shown on this plat was plotted from field notes of actual surveys made by me or under my supervision, and that the same is true and correct to the best of my belief.

Date Surveyed

Signature & Seal of Professional Surveyor

Certificate No. Gary L. Jones 7977

BASIN SURVEYS 24377

* Amended