

District I  
1625 N. French Dr., Hobbs, NM 88240  
District II  
1301 W. Grand Avenue, Artesia, NM 88210  
District III  
1000 Rio Brazos Rd., Aztec, NM 87412  
District IV  
1220 S. St. Francis Dr., Santa Fe, NM 87505

HOBBS OGD  
JUN 25 2012  
RECEIVED

State of New Mexico  
Energy, Minerals & Natural Resources Department  
OIL CONSERVATION DIVISION  
1220 South St. Francis Dr.  
Santa Fe, NM 87505

Form C-102  
Revised October 12, 2005  
Submit to Appropriate District Office  
State Lease- 4 Copies  
Fee Lease- 3 Copies  
☐ AMENDED REPORT

WELL LOCATION AND ACREAGE DEDICATION PLAT

API Number 30-025-40419	Pool Code 97900	Pool Name WC Red Hills; Bone Spring Upper Shale
Property Code 39043	Property Name PITCHBLEND "29" FED. COM	Well Number 1H
OGRID No. 7377	Operator Name EOG RESOURCES, INC.	Elevation 3321.2'

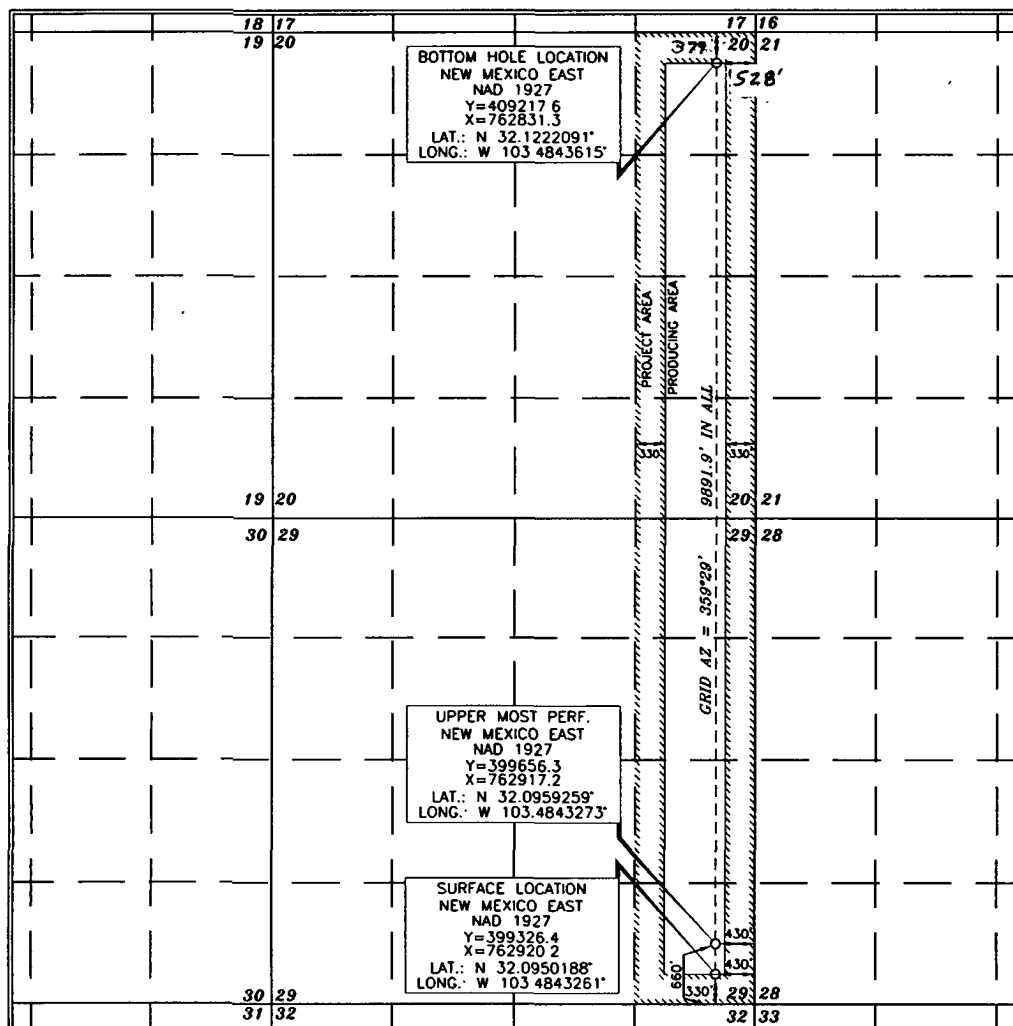
Surface Location

UL or lot no. P	Section 29	Township 25 SOUTH	Range 34 EAST, N.M.P.M.	Lot Idn	Feet from the 330'	North/South line SOUTH	Feet from the 430'	East/West line EAST	County LEA
--------------------	---------------	----------------------	----------------------------	---------	-----------------------	---------------------------	-----------------------	------------------------	---------------

Bottom Hole Location If Different From Surface

UL or lot no. A	Section 20	Township 25 SOUTH	Range 34 EAST, N.M.P.M.	Lot Idn	Feet from the 379'	North/South line NORTH	Feet from the 528	East/West line EAST	County LEA
Dedicated Acres 320	Joint or Infill	Consolidation Code	Order No. 10178 S						

No allowable will be assigned to this completion until all interests have been consolidated or a non-standard unit has been approved by the division.



OPERATOR CERTIFICATION

I hereby certify that the information contained herein is true and complete to the best of my knowledge and belief, and that this organization either owns a working interest or unleased mineral interest in the land including the proposed bottom hole location or has a right to drill this well at this location pursuant to a contract with an owner of such a mineral or working interest, or to a voluntary pooling agreement or a compulsory pooling order heretofore entered by the division.

Stan Wagner 6/12/12  
Signature Date

Stan Wagner  
Printed Name

SURVEYOR CERTIFICATION

I hereby certify that the well location shown on this plat was plotted from field notes of actual surveys made by me or under my supervision, and that the same is true and correct to the best of my belief.

DATE OF SURVEY  
JULY 26, 2011  
Signature and Seal of Professional Surveyor  
Tommy D. Hall 10/13/2011  
Certificate Number 15079

W0# 110726WL-c (Rev. A) (KA)

JUL 18 2012