

DISTRICT I  
1625 N. French Dr., Hobbs, NM 88240  
Phone (575) 393-6161 Fax: (575) 393-0720

DISTRICT II  
611 S. First St., Artesia, NM 88210  
Phone (575) 748-1283 Fax: (575) 748-9720

DISTRICT III  
1000 Rio Brazos Rd., Aztec, NM 87410  
Phone (505) 334-6176 Fax: (505) 334-6170

DISTRICT IV  
1220 S. St. Francis Dr., Santa Fe, NM 87505  
Phone (505) 478-3460 Fax: (505) 478-3462

State of New Mexico  
Energy, Minerals and Natural Resources Department

Form C-102  
Revised August 1, 2011

Submit one copy to appropriate  
District Office

# OIL CONSERVATION DIVISION

1220 South St. Francis Dr.  
Santa Fe, New Mexico 87505

HOBBS OGD

JUL 16 2012

RECEIVED

## WELL LOCATION AND ACREAGE DEDICATION PLAT

☐ AMENDED REPORT

API Number 30-025-40687	Pool Code 97838	Well Name WC-025 G-05 52652-08P Wildcat Bone Spring Upper Shale
Property Code 39349	Property Name RED HILLS WEST UNIT 3	Well Number 4H
GRID No. 14744	Operator Name MEWBOURNE OIL COMPANY	Elevation 3275'

### Surface Location

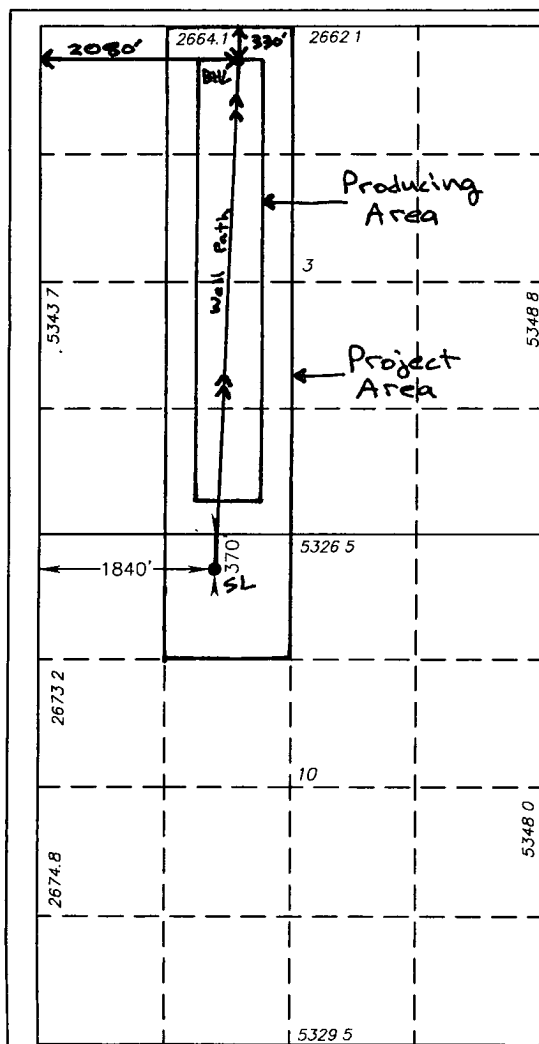
UL or lot No.	Section	Township	Range	Lot Idn	Feet from the	North/South line	Feet from the	East/West line	County
C	10	26 S	32 E		370	NORTH	1840	WEST	LEA

### Bottom Hole Location If Different From Surface

UL or lot No.	Section	Township	Range	Lot Idn	Feet from the	North/South line	Feet from the	East/West line	County
C	3	26 S	32 E		330	North	2080	West	Lea

Dedicated Acres	Joint or Infill	Consolidation Code	Order No.
160			

NO ALLOWABLE WILL BE ASSIGNED TO THIS COMPLETION UNTIL ALL INTERESTS HAVE BEEN CONSOLIDATED  
OR A NON-STANDARD UNIT HAS BEEN APPROVED BY THE DIVISION



**SURFACE LOCATION**  
Lat - N 32°03'49.85"  
Long - W 103°39'54.06"  
NMSPCE- N 387592.998  
E 707033.023  
(NAD-27)

### OPERATOR CERTIFICATION

I hereby certify that the information contained herein is true and complete to the best of my knowledge and belief, and that this organization either owns a working interest or unleased mineral interest in the land including the proposed bottom hole location or has a right to drill this well at this location pursuant to a contract with an owner of such a mineral or working interest, or to a voluntary pooling agreement or a compulsory pooling order heretofore entered by the division.

Brett Bednarz 3-11-12  
Signature Date

Brett Bednarz  
Printed Name

Email Address

### SURVEYOR CERTIFICATION

I hereby certify that the well location shown on this plat was plotted from field notes of actual surveys made by me or under my supervision and that the same is true and correct to the best of my belief.

Date Surveyed 2012
Signature & Seal of Professional Surveyor 7977
Certificate No. Gary L. Jones 7977
BASIN SURVEYS 26211

JUL 18 2012