

DISTRICT I
1625 N. French Dr., Hobbs, NM 88240
Phone (575) 393-6161 Fax (575) 393-0720
DISTRICT II
811 S. First St., Artesia, NM 88210
Phone (575) 748-1283 Fax (575) 748-9720
DISTRICT III
1000 Rio Brazos Road, Aztec, NM 87410
Phone (505) 334-6178 Fax (505) 334-6170
DISTRICT IV
1220 S. St. Francis Dr., Santa Fe, NM 87505
Phone (505) 476-3460 Fax (505) 476-3462

HOBBS OGD

JUL 20 2012

RECEIVED

State of New Mexico
Energy, Minerals & Natural Resources Department

OIL CONSERVATION DIVISION

1220 South St. Francis Dr.
Santa Fe, New Mexico 87505

Form C-102

Revised August 1, 2011

Submit one copy to appropriate
District Office

☐ AMENDED REPORT

WELL LOCATION AND ACREAGE DEDICATION PLAT

API Number 30-025-40696	Pool Code 22900	Pool Name Eunice; Bli - Tu - Dri, North
Property Code 22503	Property Name NORTHEAST DRINKARD UNIT	Well Number 157W
OGRID No. 873	Operator Name APACHE CORPORATION	Elevation 3488'

Surface Location

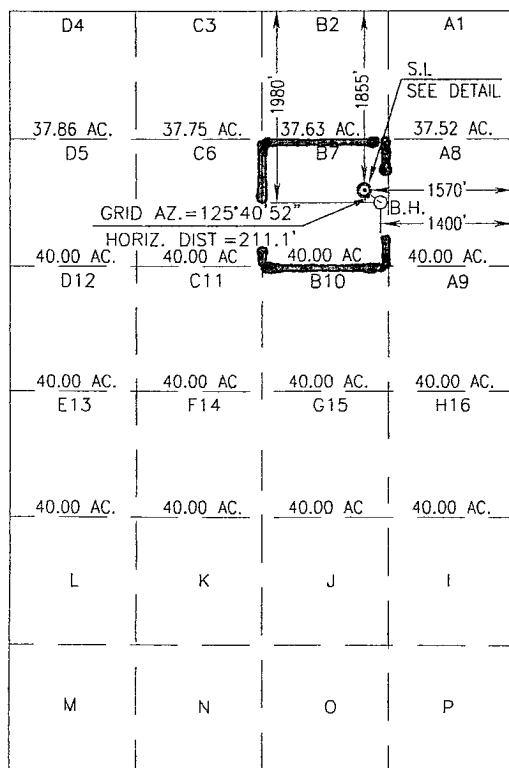
UL or lot No	Section	Township	Range	Lot Idn	Feet from the	North/South line	Feet from the	East/West line	County
7	3	21-S	37-E		1855	NORTH	1570	EAST	LEA

Bottom Hole Location If Different From Surface

UL or lot No	Section	Township	Range	Lot Idn	Feet from the	North/South line	Feet from the	East/West line	County
7	3	21-S	37-E		1980	NORTH	1400	EAST	LEA

Dedicated Acres	Joint or Infill	Consolidation Code	Order No
40			

NO ALLOWABLE WILL BE ASSIGNED TO THIS COMPLETION UNTIL ALL INTERESTS HAVE BEEN CONSOLIDATED
OR A NON-STANDARD UNIT HAS BEEN APPROVED BY THE DIVISION



SCALE: 1"=2000'

GEODETIC COORDINATES
NAD 27 NME

SURFACE LOCATION

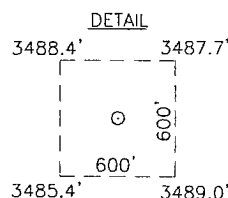
Y=553843.8 N
X=865691.5 E

LAT.=32°51'03.1" N
LONG.=103°14'69.94" W

LAT.=32°31'02" N
LONG.=103°08'49" W

BOTTOM HOLE LOCATION

Y=553720.7 N
X=865863.0 E



OPERATOR CERTIFICATION

I hereby certify that the information herein is true and complete to the best of my knowledge and belief, and that this organization either owns a working interest or unleased mineral interest in the land including the proposed bottom hole location or has a right to drill this well at this location pursuant to a contract with an owner of such mineral or working interest, or to a voluntary pooling agreement or a compulsory pooling order heretofore entered by the division

Sorina Flores 3/21/12
Signature Date
Sorina L. Flores
Printed Name

SURVEYOR CERTIFICATION

I hereby certify that the well location shown on this plat was plotted from field notes of actual surveys made by me or under my supervision, and that the same is true and correct to the best of my belief

SEPTEMBER 4, 2010

Date Surveyed Rev: 10/12/10 DSS

Signature of Professional Surveyor

Sorina Flores 10/13/10
Professional Surveyor
Certificate No. GARY G. EDSON 12841
RONALD L. EDSON 3239

JUL 23 2012