

Surface Use Plan

LEA UNIT #30H

LEGACY RESERVES OPERATING, L.P.

SHL: Unit M, Section 12

T20S-R34E, Lea County New Mexico

(REVISED 6-8-12: Surface Location Change)

1. **Existing Roads:** Please see the attached map showing the existing roads on the Lea Unit and surrounding area. All existing roads will be maintained in a condition equal to or better than current conditions.
2. **Planned Access Roads:** Approximately 316' of new access road will be constructed as follows – The maximum width of the road will be 14'. It will be crowned and made of 6" rolled compacted caliche. Water will be deflected, as necessary, to avoid accumulation and prevent surface erosion. Surface material will be native caliche. This material will be obtained from a BLM approved pit nearest in proximity to the location. The average grade will be approximately 1%. No cattle guards, grates, or fence cuts will be required. No turnouts are planned.
3. **Location of Existing Wells in a One-Mile Radius:**
 - A. Water Wells – None known.
 - B. Disposal Wells – Lea Unit #2 SWD in San Andres zone.
 - C. Drilling Wells – None known.
 - D. Producing Wells – As shown on attached map.
 - E. Abandoned Wells – As shown on attached map.
4. **Production Facilities:** This well will produce to the existing main battery. None are planned but if any facility improvements are to be made it will occur in the already existing burm area. A sundry notice will be submitted if and when this occurs.
5. **Location and Type of Water Supply:** Water to be used in the drilling of the horizontal lateral and the completion of the lateral will be purchased from a commercial source and piped on existing right of ways or trucked to the location.
6. **Source of Construction Material:** The caliche material utilized for the drilling pad and proposed access road will be from minerals that are located onsite or will be used onsite. If minerals are not available onsite, then an established mineral pit will be used to build this location and access road.

JUL 26 2012

Surface Use Plan
LEA UNIT #30H
LEGACY RESERVES OPERATING, L.P.
SHL: Unit M, Section 12
T20S-R34E, Lea County New Mexico
(REVISED 6-8-12: Surface Location Change)

7. **Methods of Handling Waste Material:**

- A. Drill cuttings and fluids are to be stored in steel containment pits and bins and then hauled to a state approved disposal facility.
- B. All trash will be contained in trash cages. When the job is complete all contents will be removed and disposed of in an approved sanitary land fill.
- C. All dried materials (drilling mud) will be picked up by the supplier including broken sacks.
- D. Sewage from living quarters will drain into holding tanks and be removed and cleaned out as needed. A Porta-John will be provided for the drilling crew. This equipment will be properly maintained during the drilling of the horizontal lateral and removed upon completion of well.
- E. Drilling fluids will be contained in steel pits in a closed loop circulating system. Fluids will be cleaned and reused in the drilling process. Water produced during the completion and initial testing of the well will be contained in steel pits or tanks and disposed of at a state approved disposal facility. Any oil or condensate produced will be stored in test tanks until sold and/or hauled from the site.

8. **Ancillary Facilities:** None to be needed or constructed for this project.

9. **Well Site Layout:**

- A. See attachment for location and rig layout.
- B. Mud pits in the closed loop circulating system will be steel and the cuttings will be stored in steel containment pits/bins.
- C. Cuttings will be stored in steel pits/bins until they are hauled to a state approved disposal facility.

10. **Plans for Restoration:** If the well is deemed commercially productive, caliche from areas of the pad site not required for operations will be reclaimed. The original top soil will be returned to the area of the drill pad not necessary to operate the well. These unused areas of the drill pad will be contoured, as close as possible, to match the original topography.

[illegible]

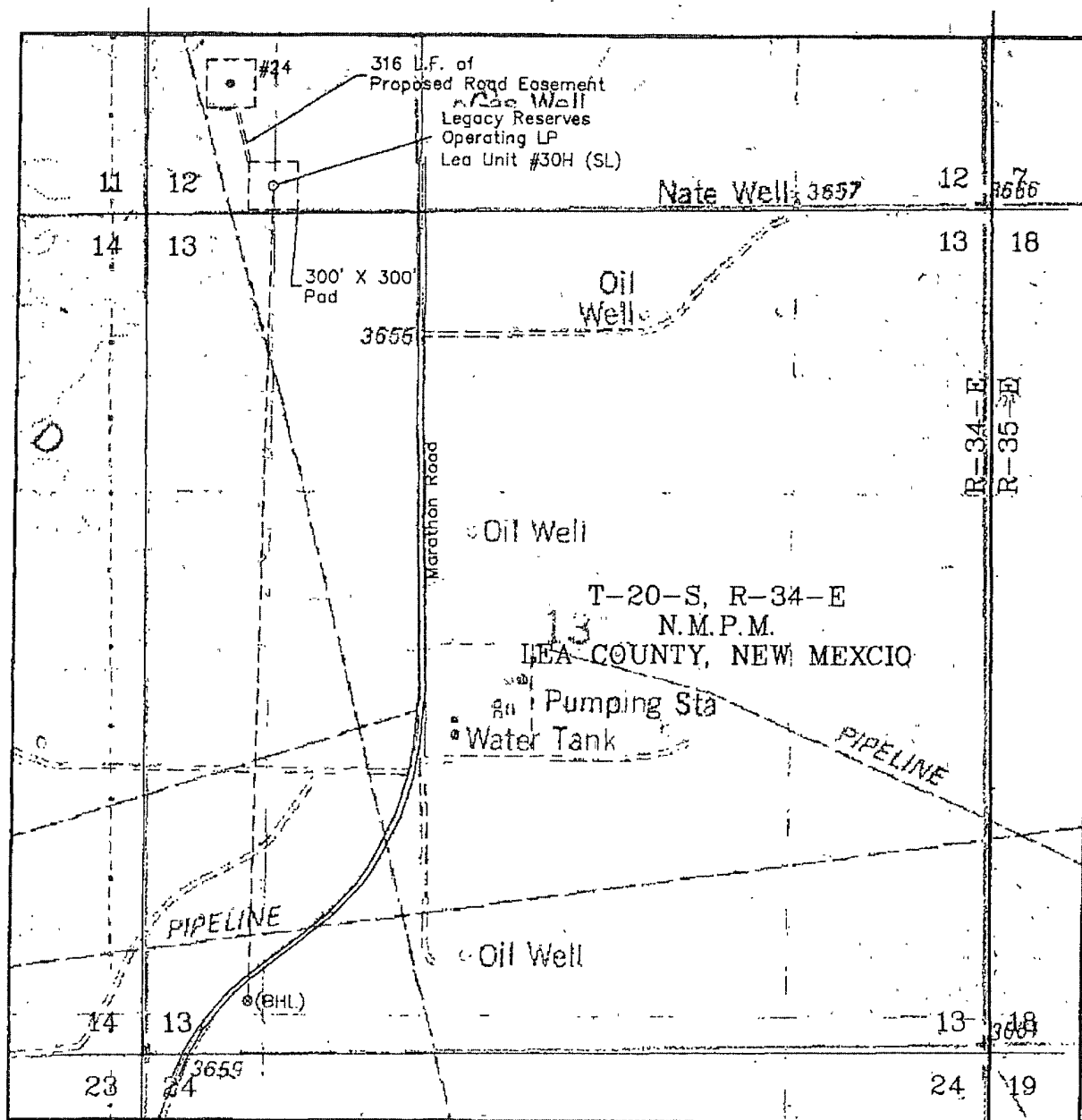
2

579

Signature: Matt Sears
Matt Sears

Signature _____

Matt Sears
Landman



LEGEND

- - Denotes Proposed Surface Well Location
- ⊗ - Denotes Proposed Bottom Hole Location
- - Denotes Producing Well Location

Date: June 6, 2012

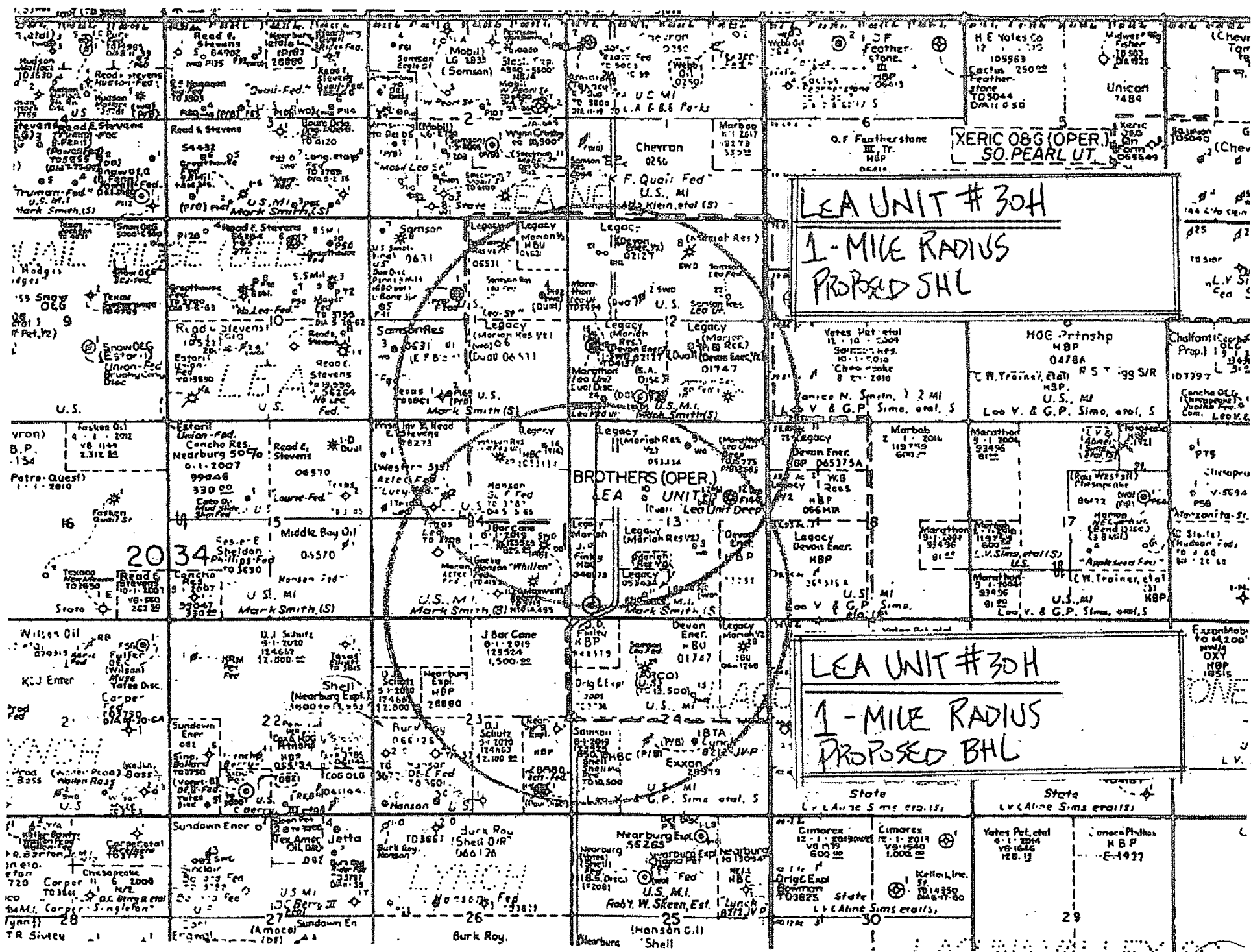
LEGACY RESERVES OPERATING LP

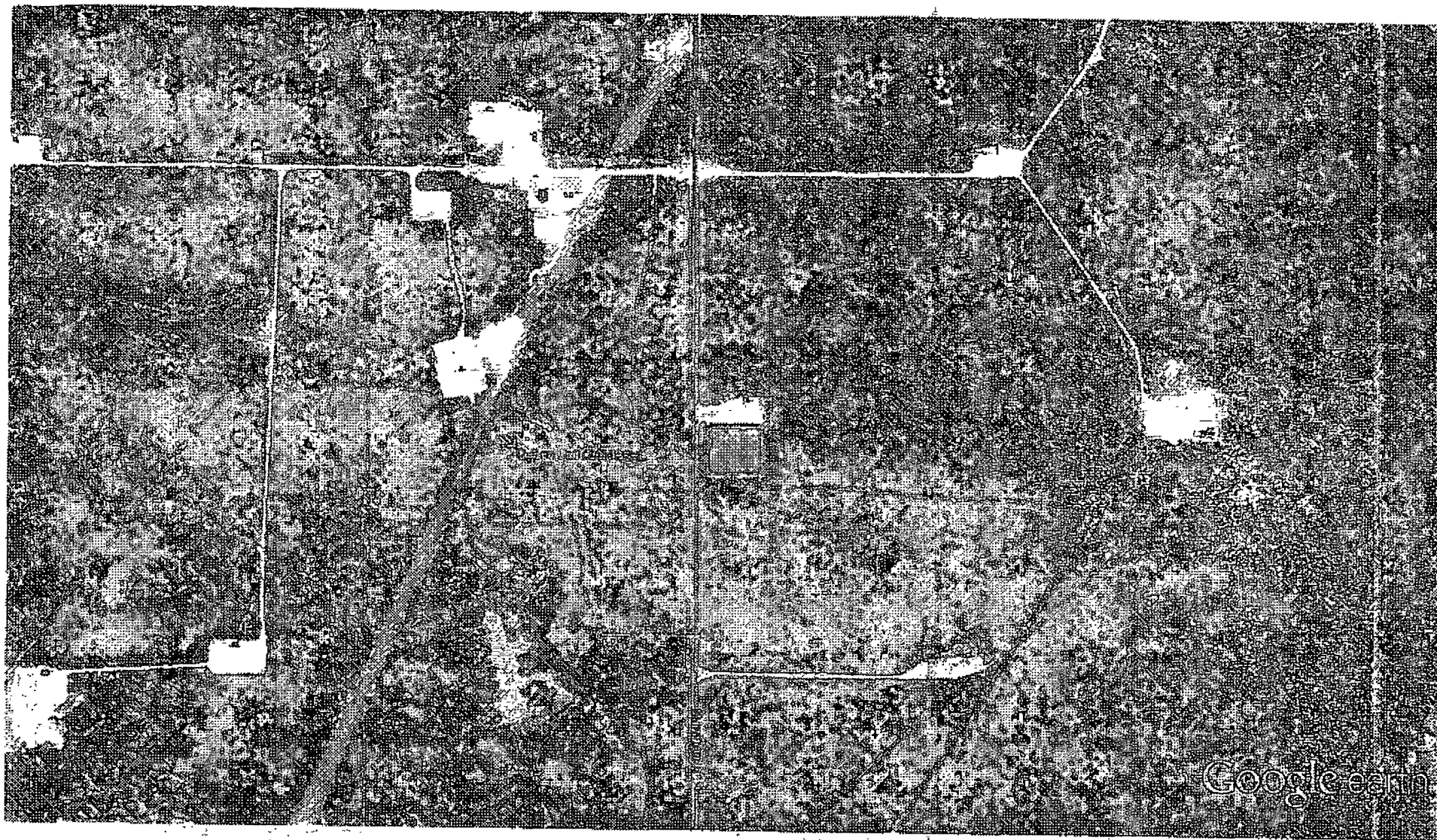
Sketch of PROPOSED ROAD EASEMENT

Section 12, T-20-S, R-34-E
N.M.P.M.
Lea County, New Mexico

**WEST
COMPANY**
of Midland, Inc.

110 W. LOUISIANA, STE. 110
MIDLAND TEXAS, 79701
(432) 687-0865 - (432) 687-0868 FAX





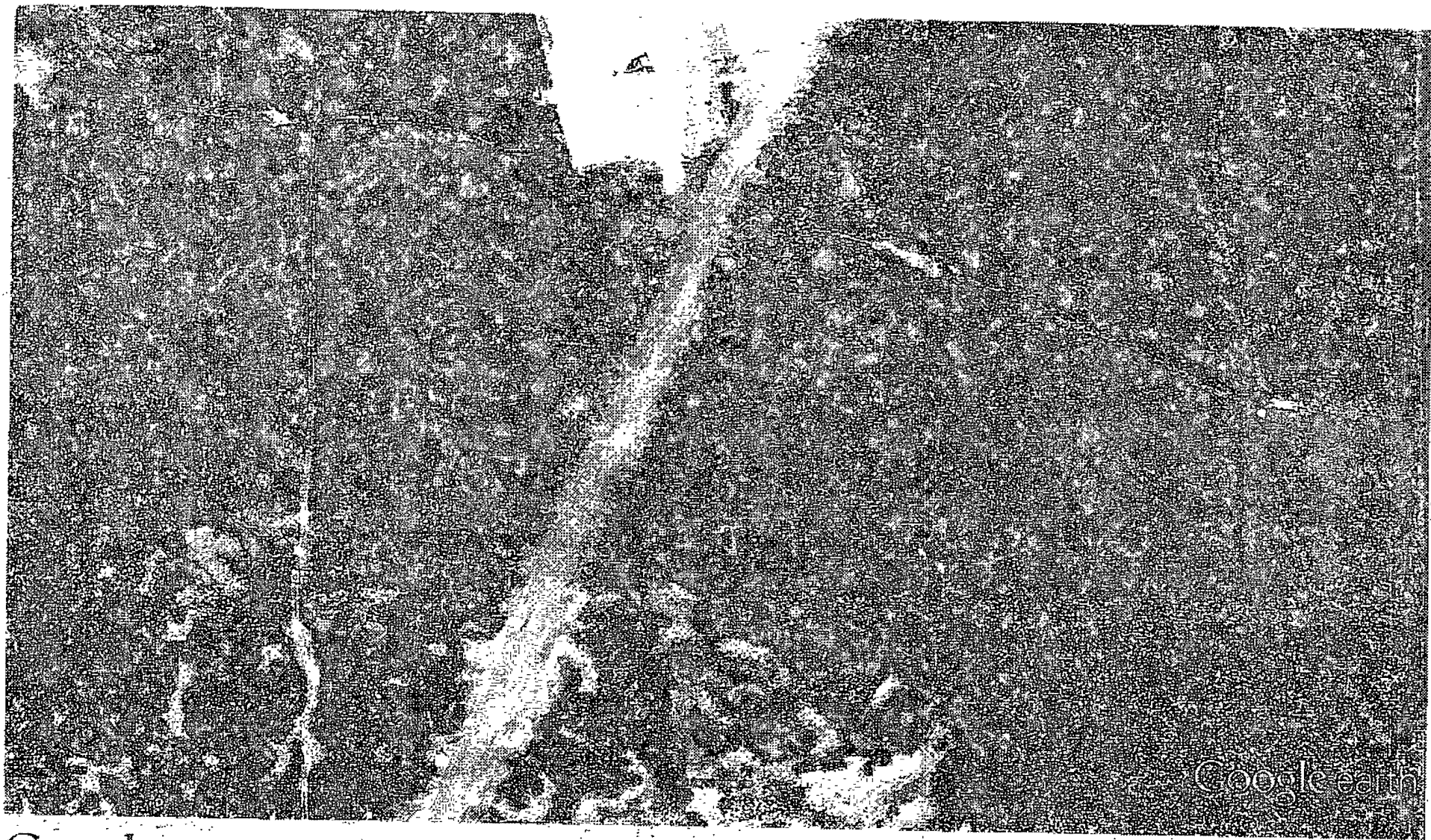
Google earth

feet
km



Google earth





Google earth

feet
meters

1000

400





Google earth

feet
meters

