

Submit 1 Copy To Appropriate District Office

District I - (575) 393-6161
1625 N French Dr., Hobbs, NM 88240
District II - (575) 748-1283
811 S First St., Artesia, NM 88210
District III - (505) 334-6178
1000 Rio Brazos Rd., Aztec, NM 87410
District IV - (505) 476-3460
1220 S St Francis Dr., Santa Fe, NM 87505

State of New Mexico

Energy, Minerals and Natural Resources

Form C-103

Revised August 1, 2011

HOBBS OCD

JUL 23 2012

RECEIVED

CONSERVATION DIVISION

1220 South St. Francis Dr.

Santa Fe, NM 87505

WELL API NO.	30-025-27176
5. Indicate Type of Lease	STATE <input type="checkbox"/> FEE <input type="checkbox"/> FED <input type="checkbox"/>
6. State Oil & Gas Lease No.	
7. Lease Name or Unit Agreement Name	J H MCCLURE B COI
8. Well Number	022
9. OGRID Number	229137 272285
10. Pool name or Wildcat	SWD; QUEEN
11. Elevation (Show whether DR, RKB, RT, GR, etc)	3175.8' GR

SUNDRY NOTICES AND REPORTS ON WELLS (DO NOT USE THIS FORM FOR PROPOSALS TO DRILL OR TO DEEPEN OR PLUG BACK TO A DIFFERENT RESERVOIR USE "APPLICATION FOR PERMIT" (FORM C-101) FOR SUCH PROPOSALS)	
1. Type of Well: Oil Well <input checked="" type="checkbox"/> Gas Well <input type="checkbox"/> Other <input type="checkbox"/>	
2. Name of Operator THREE RIVERS OPERATING CO., LLC COG Operating	
3. Address of Operator 1122 S. CAPITAL OF TEXAS HWY, #325 AUSTIN, TX 78746	
4. Well Location Unit Letter I : 1650 feet from the SOUTH line and 660 feet from the EAST line Section 19 Township 24S Range 38E NMPM County LEA	
11. Elevation (Show whether DR, RKB, RT, GR, etc) 3175.8' GR	

12. Check Appropriate Box to Indicate Nature of Notice, Report or Other Data

NOTICE OF INTENTION TO:

PERFORM REMEDIAL WORK ☐ PLUG AND ABANDON ☐
TEMPORARILY ABANDON ☐ CHANGE PLANS ☐
PULL OR ALTER CASING ☐ MULTIPLE COMPL ☐
DOWNHOLE COMMINGLE ☐

SUBSEQUENT REPORT OF:

REMEDIAL WORK ☒ ALTERING CASING ☐
COMMENCE DRILLING OPNS. ☐ P AND A ☐
CASING/CEMENT JOB ☐

OTHER: ☐

OTHER: ☐

13. Describe proposed or completed operations. (Clearly state all pertinent details, and give pertinent dates, including estimated date of starting any proposed work). SEE RULE 19.15.7.14 NMAC. For Multiple Completions: Attach wellbore diagram of proposed completion or recompletion.

06/25/12 - MIRU; scanalog tbq OOH; release pkr & pull OOH
06/26/12 - RIH w/ bit & scraper to clean out
06/27/12 - RIH w/ AD-1 pkr & IPC tbq - tested tbq in hole
Set pkr @ 3707'; tested csg to 550#
Witness by OCD - OK

Spud Date:

Rig Release Date:

06/27/12

I hereby certify that the information above is true and complete to the best of my knowledge and belief.

SIGNATURE

TITLE OPERATIONS MANAGER

DATE 07/20/2012

Type or print name TOM STRATTON

E-mail address: tstratton@3mr.com

PHONE: 512-706-9849

For State Use Only

APPROVED BY:

TITLE DIST. MGR

DATE 7-26-2012

Conditions of Approval (if any):

JUL 26 2012

Three Rivers Operating

WJC, Inc.
Midland Tx, 79701

McClure B 22 SWD

Bill Collier
Company Rep.

Consulting Services

Lea Co., NM

Office 685 4171
Cell 559 4005

6/25/2012 MIRU PU -set pipe racks & catwalk / unload workstring-135 jts. 2. 7/8" N -80 tbg / try to unset Bakerloc-set pkr. something came loose / pooh scanning tbg. 69 yellow ; 39 blue; Layed out - 8 green ; 6 red ; 1 with hole Jt 47 from surface/ 122 total jts. to pkr@ 3,007' / pu work string; collar with left hand threads; TIH w/116 jts. screwed into pkr. with left hand threads /work tbg. up and down-turn to the right / after 1.5 hrs unset pkr.pooh w/ tbg. & AD-1 pkr./ pu 5. 1/2" scrapper and 5 stds.
RIH- install TIW valve secure well

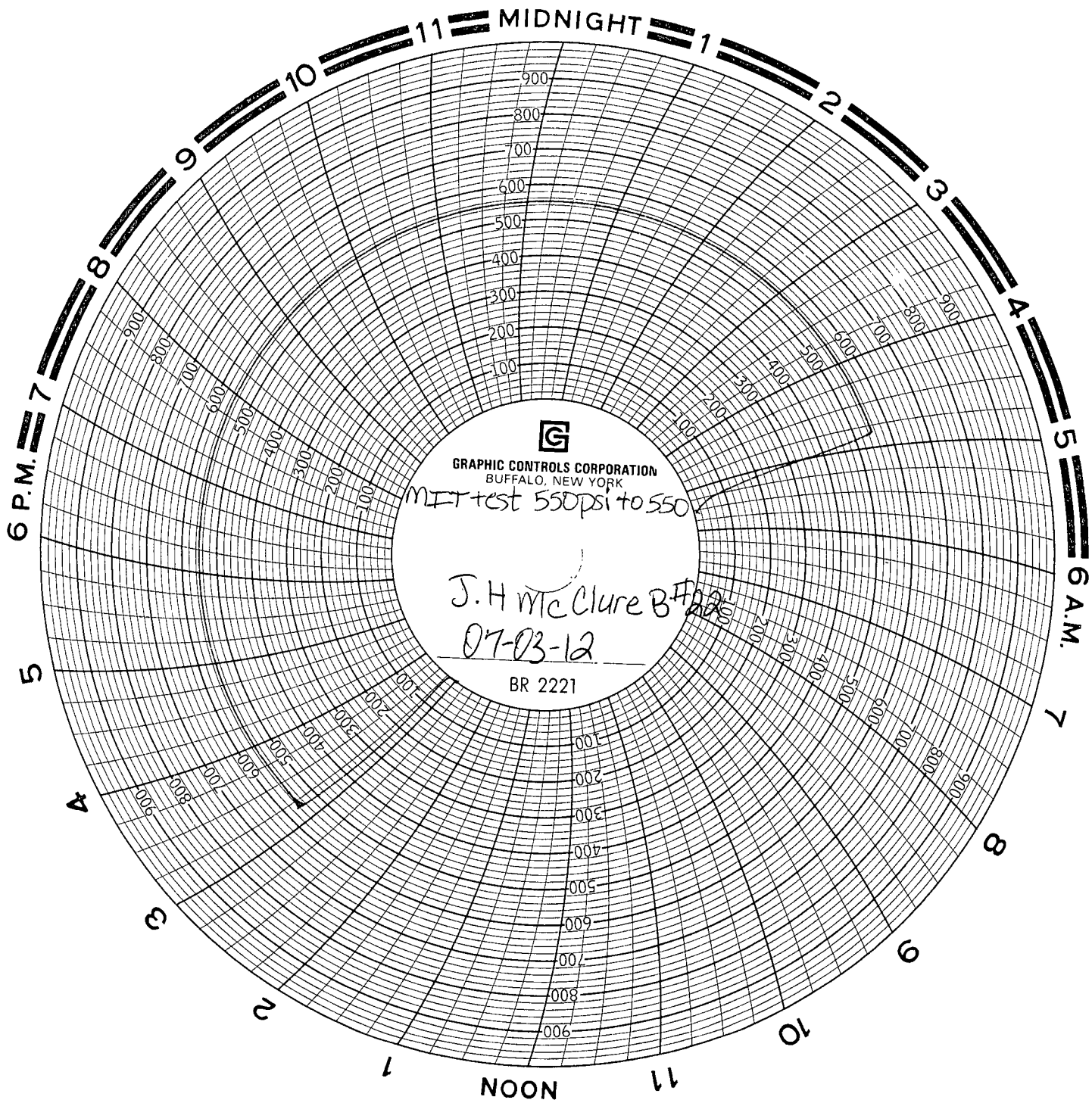
SION 7:00pm

6/26/2012 TIH w- workstring w- csg scraper to 3,950'. POOH w- scraper laying down workstring / TIH w- AD-1 pkr w- IPC tbg. test csg staging in w- tbg. and pkr. / found additional collar leak in tbg. / POOH and set up tbg test trk for AM

SION 5:00pm

6/27/2012 Tbg and Csg pressure = 40psi. / Bleed pressure off. / POOH w/ kill string. RU hydro testers. Tested 15 jts and tubing testers tool would not fit threw pipe due to build up in pipe. RD tubing testers. / RIH w/ bull plug on bottom / RU pump truck and tested T.B.G to 2000psi @ 53jts in hole. Leaked. Leak @ 52jts in and 69 out. Collar leak. Continued testing and found 5 more collars w/ pin holes. One jt had a pin hole leak in upset. Tested 120jts held 2000psi. POOH w/ Tbg./ RIH w/ AD-1 packer and 121jts. Set packer @ 3707ft. Tested Csg to 550psi and held. / Released packer and circulated 100bbls of f/w w- packer fluid. Set packer. ND BOP and NU wellhead. Left packer with 12k tension. Tested Csg to 550psi -held. RU flow line.

SION 7:30pm



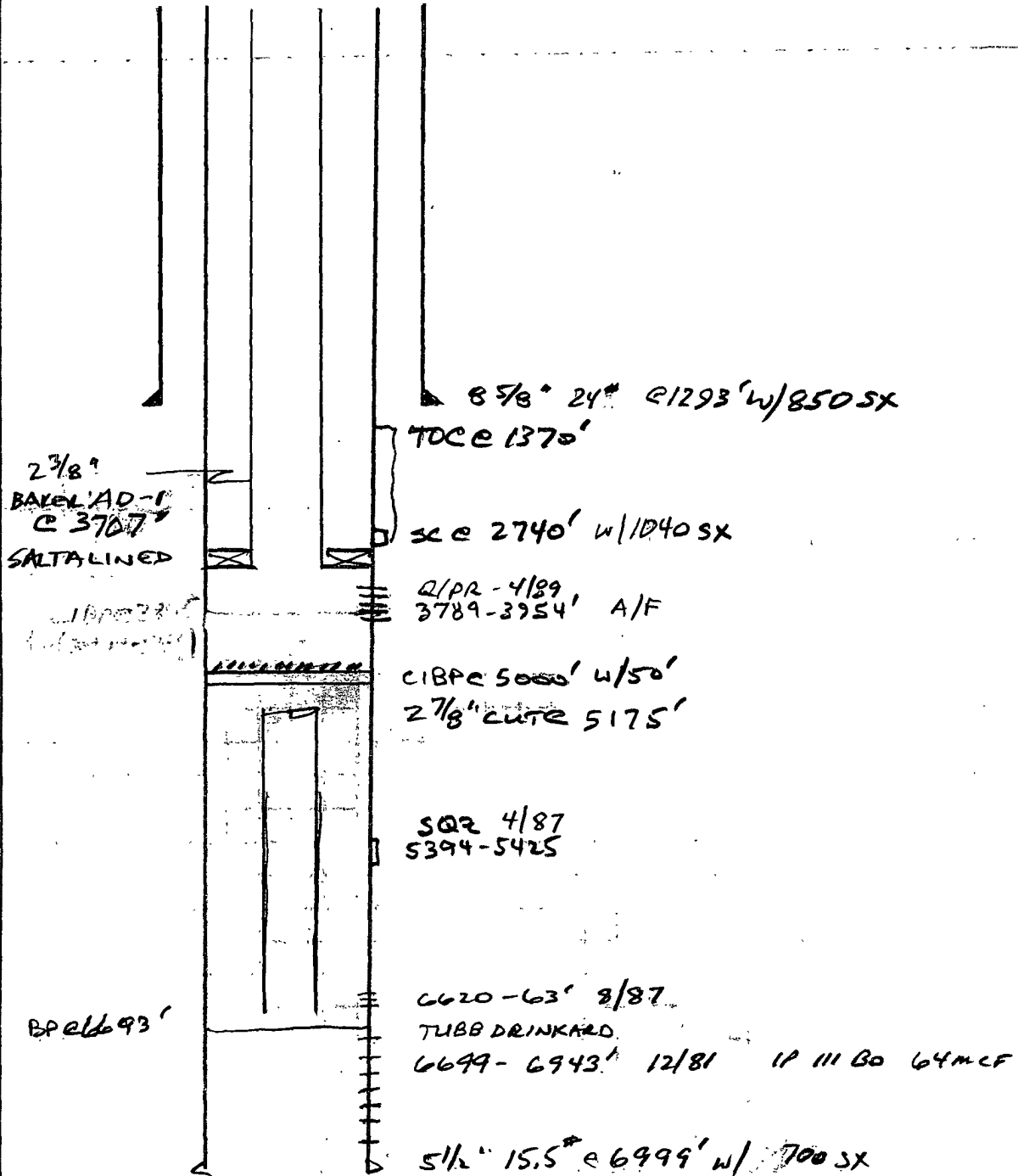
SPUC

McClure B[#]22

API[#] 30-025-27176

SEL 19-245-38E
DOLLARHIDE FIELD
LEA CO NM

AMPAD[™]



Well	Active or P&A	Surface casing information
State E #1	P&A	N/A
State E #2	P&A	Rig on location
State E #3	P&A	N/A
State E #4	P&A	N/A
State E #5	P&A	N/A
State E #6	P&A	N/A
State E #7	P&A	N/A
State E #8	P&A	N/A
State E #9	Active	Rig on location
State E #10	Active	No pressure
State E #11	P&A	N/A
State E #12	Active	No pressure
State E #13	P&A	N/A
State E #14	Active	No pressure

Intermediate casing information	GPS Coordinates
N/A	32.23206 N, -103.16884 W
Rig on location	32.23400 N, -103.16868 W
N/A	32.23835 N, -103.16630 W
N/A	32.23616 N, -103.17629 W
N/A	32.23397 N, -103.17693 W
N/A	32.23180 N, -103.17695 W
N/A	32.23396 N, -103.17047 W
N/A	32.23616 N, -103.17372 W
Rig on location	32.23616 N, -103.16603 W
40 psi - blew down, built up to 4 psi overnight	32.23182 N, -103.17113 W
N/A	32.23128 N, -103.17180 W
No Pressure	32.23447 N, -103.17307 W
N/A	32.23236 N, -103.17307 W
No Pressure	32.23128 N, -103.17858 W

Inspection Results
Location clean - no evidence of leakage
Rig on well
Location clean
Location clean
Location clean
Marker needs ID plate replaced - missing
Location clean
Location clean
Rig on location
No fluid present
Location clean
No casing pressure issues
Location clean
No casing pressure issues