

DISTRICT I  
1625 N. French Dr., Hobbs, NM 88240  
Phone (575) 393-6161 Fax: (575) 393-0720

DISTRICT II  
811 S. First St., Artesia, NM 88210  
Phone (505) 746-1263 Fax: (505) 746-0720

DISTRICT III  
1000 Rio Brazos Rd., Aztec, NM 87410  
Phone (505) 334-6178 Fax: (505) 334-6170

DISTRICT IV  
1220 S. St. Francis Dr., Santa Fe, NM 87505  
Phone (505) 476-3480 Fax: (505) 476-3482

HOBBS OCD

JUL 30 2012

RECEIVED

State of New Mexico  
Energy, Minerals and Natural Resources Department

OIL CONSERVATION DIVISION

1220 South St. Francis Dr.  
Santa Fe, New Mexico 87505

Form C-102  
Revised August 1, 2011

Submit one copy to appropriate  
District Office

WELL LOCATION AND ACREAGE DEDICATION PLAT

☐ AMENDED REPORT

API Number <b>30-025-40490</b>	Pool Code <b>22900</b>	Pool Name <b>EWICE; B-T-D, NORTH</b>
Property Code <b>22503</b>	Property Name <b>NEDU</b>	Well Number <b>192</b>
OGRID No. <b>873</b>	Operator Name <b>APACHE CORPORATION</b>	Elevation <b>3437</b>

Surface Location

UL or lot No. <b>LOT 6</b>	Section <b>2</b>	Township <b>21 S</b>	Range <b>37 E</b>	Lot Idn	Feet from the <b>1410</b>	North/South line <b>NORTH</b>	Feet from the <b>1620</b>	East/West line <b>WEST</b>	County <b>LEA</b>
-------------------------------	---------------------	-------------------------	----------------------	---------	------------------------------	----------------------------------	------------------------------	-------------------------------	----------------------

Bottom Hole Location If Different From Surface

UL or lot No.	Section	Township	Range	Lot Idn	Feet from the	North/South line	Feet from the	East/West line	County
---------------	---------	----------	-------	---------	---------------	------------------	---------------	----------------	--------

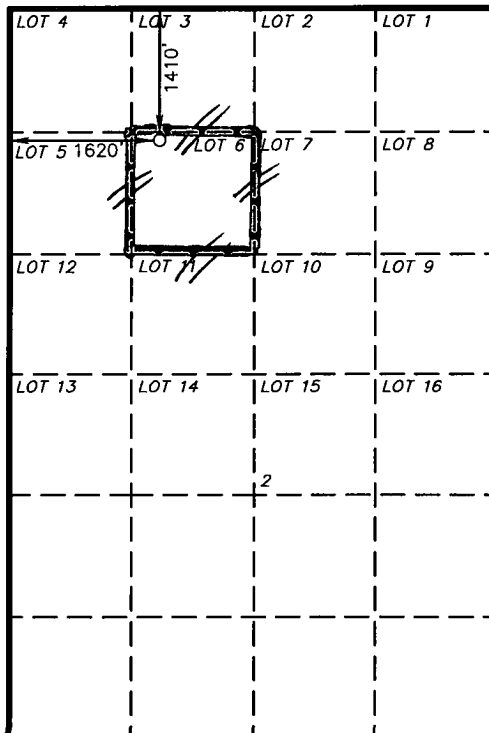
Dedicated Acres <b>40</b>	Joint or Infill	Consolidation Code	Order No.
------------------------------	-----------------	--------------------	-----------

NO ALLOWABLE WILL BE ASSIGNED TO THIS COMPLETION UNTIL ALL INTERESTS HAVE BEEN CONSOLIDATED  
OR A NON-STANDARD UNIT HAS BEEN APPROVED BY THE DIVISION

SURFACE LOCATION

Lat - N 32°31'06.22"  
Long - W 103°08'13.70"  
NMSPCE- N 554391.709  
E 910053.173  
(NAD-83)

Lat - N 32°31'05.79"  
Long - W 103°08'12.00"  
NMSPCE- N 554332.075  
E 868869.584  
(NAD-27)



OPERATOR CERTIFICATION

I hereby certify that the information contained herein is true and complete to the best of my knowledge and belief, and that this organization either owns a working interest or unleased mineral interest in the land including the proposed bottom hole location or has a right to drill this well at this location pursuant to a contract with an owner of such a mineral or working interest, or to a voluntary pooling agreement or a compulsory pooling order heretofore entered by the division.

*Reesa Holland* 7/25/12  
Signature Date

**REESA HOLLAND**  
Printed Name  
*Reesa.Holland@apachecorp.com*  
Email Address

SURVEYOR CERTIFICATION

I hereby certify that the well location shown on this plat was plotted from field notes of actual surveys made by me or under my supervision, and that the same is true and correct to the best of my belief

EXPIRY DATE 12/31/2012  
Date Surveyed  
Signature & Seal of Professional Surveyor  
*[Signature]*  
Professional Surveyor

Certificate No. Gary L. Jones 7977

BASIN SURVEYS 26229

JUL 31 2012