

District I
1625 N French Dr., Hobbs, NM 88240
Phone (575) 393-6161 Fax (575) 393-0720
District II
811 S First St., Artesia, NM 88210
Phone (575) 748-1283 Fax (575) 748-9720
District III
1000 Rio Brazos Road, Aztec, NM 87410
Phone (505) 334-6178 Fax (505) 334-6170
District IV
1220 S St Francis Dr., Santa Fe, NM 87505
Phone (505) 476-3460 Fax (505) 476-3462

State of New Mexico

Form C-101
Revised August 1, 2011

Energy Minerals and Natural Resources

HOBBS OCD

Oil Conservation Division

Permit

AUG 16 2012

1220 South St. Francis Dr.

Santa Fe, NM 87505

RECEIVED

APPLICATION FOR PERMIT TO DRILL, RE-ENTER, DEEPEN, PLUGBACK, OR ADD A ZONE

¹ Operator Name and Address Texland Petroleum-Hobbs, LLC 777 Main Street, Suite 3200 Fort Worth, Texas 76102		² OGRID Number 113315
		³ API Number 30-025-36987
⁴ Property Code 34454	⁵ Property Name OLP 4 State	⁶ Well No #1

⁷ Surface Location

UL - Lot P	Section 4	Township 17-S	Range 36-E	Lot Idn	Feet from 440	N/S Line South	Feet From 440	E/W Line East	County Lea
---------------	--------------	------------------	---------------	---------	------------------	-------------------	------------------	------------------	---------------

⁸ Pool Information

Shoe Bar, Wolfcamp	WC-025 G-07 S173604 P; Wolfcamp	979 73
--------------------	---------------------------------	--------

Additional Well Information

⁹ Work Type P	¹⁰ Well Type O	¹¹ Cable/Rotary n/a	¹² Lease Type S	¹³ Ground Level Elevation 3874'
¹⁴ Multiple N	¹⁵ Proposed Depth TD 13,106'	¹⁶ Formation Wolfcamp	¹⁷ Contractor n/a	¹⁸ Spud Date ASAP
Depth to Ground water 90'		Distance from nearest fresh water well 4962' to the West		Distance to nearest surface water 2 miles

¹⁹ Proposed Casing and Cement Program

Type	Hole Size	Casing Size	Casing Weight/ft	Setting Depth	Sacks of Cement	Estimated TOC
See	original	completion				

Casing/Cement Program: Additional Comments

See attached current and proposed wellbore schematic for additional information.
--

Proposed Blowout Prevention Program

Type	Working Pressure	Test Pressure	Manufacturer

Permit Expires 2 Years From Approval
Date Unless Drilling Underway
plugback

I hereby certify that the information given above is true and complete to the best of my knowledge and belief I further certify that the drilling pit will be constructed according to NMOCD guidelines <input type="checkbox"/> , a general permit <input type="checkbox"/> , or an (attached) alternative OCD-approved plan <input type="checkbox"/> .		OIL CONSERVATION DIVISION	
Printed name Vickie Smith		Approved By	
Title Regulatory Analyst		Title Petroleum Engineer	
E-mail Address vsmith@texpetro.com		Approved Date	
Date August 16, 2012		Expiration Date	
Phone 575-397-7450		Conditions of Approval Attached	

AUG 16 2012

AUG 16 2012

State of New Mexico

DISTRICT I

1625 N. FRENCH DR., HOBBS, NM 88240

DISTRICT II

1301 W. GRAND AVENUE, ARTESIA, NM 88210

DISTRICT III

1000 Rio Brazos Rd., Aztec, NM 87410

Energy, Minerals and Natural Resources Department

OIL CONSERVATION DIVISION

1220 SOUTH ST. FRANCIS DR.

Santa Fe, New Mexico 87505

Form C-102

Revised JUNE 10, 2003

Submit to Appropriate District Office

State Lease - 4 Copies

Fee Lease - 3 Copies

DISTRICT IV

1220 S. ST. FRANCIS DR., SANTA FE, NM 87505

WELL LOCATION AND ACREAGE DEDICATION PLAT

☐ AMENDED REPORT

API Number 30-025-36987	Pool Code 97973	Pool Name WC-025 307 5173604 P, Shoe Bar Wolfcamp
Property Code 34454	Operator Name OPL 4 State	Well Number 1
ACRTD No. 113315	Operator Name Texland Petroleum - Hobbs, LLC	Elevation 3874'

Surface Location

UL or lot No.	Section	Township	Range	Lot Idn	Feet from the	North/South line	Feet from the	East/West line	County
P	4	17-S	36-E		440	SOUTH	440	EAST	LEA

Bottom Hole Location If Different From Surface

UL or lot No.	Section	Township	Range	Lot Idn	Feet from the	North/South line	Feet from the	East/West line	County
Dedicated Acres 40	Joint or Infill N	Consolidation Code	Order No.						

NO ALLOWABLE WILL BE ASSIGNED TO THIS COMPLETION UNTIL ALL INTERESTS HAVE BEEN CONSOLIDATED OR A NON-STANDARD UNIT HAS BEEN APPROVED BY THE DIVISION

LOT 4 39.53 AC	LOT 3 39.48 AC	LOT 2 39.42 AC	LOT 1 39.38 AC
<p>GEODETIC COORDINATES NAD 27 NME</p> <p>Y=677207.6 N X=801356.7 E</p> <p>LAT.=32°51'28.36" N LONG.=103°21'07.10" W</p>			
<p>DETAIL</p>			
<p>OPERATOR CERTIFICATION</p> <p>I hereby certify the information contained herein is true and complete to the best of my knowledge and belief.</p> <p><u>Vickie Smith</u> Signature</p> <p><u>Vickie Smith</u> Printed Name</p> <p>Regulatory Analyst Title</p> <p>8-16-12 Date</p>			
<p>SURVEYOR CERTIFICATION</p> <p>I hereby certify that the well location shown on this plat was plotted from field notes of actual surveys made by me or under my supervision, and that the same is true and correct to the best of my belief.</p> <p>NOVEMBER 12, 2004</p> <p>Date Surveyed: _____ JR</p> <p>Signature & Seal of Professional Surveyor: <u>Gary E. Edson</u> 11/18/04</p> <p>04.11.1495</p> <p>Certificate No. GARY EDSON 12641</p>			

OPL 4 State #1

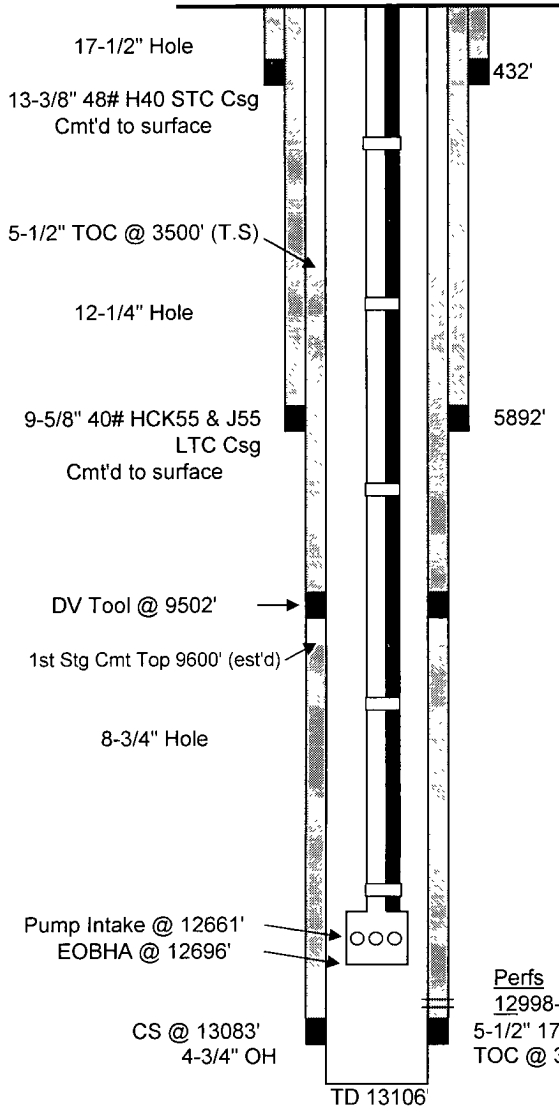
Wellbore Schematic

Dr'd 3/2005

KB: 3894'

GL 3874'

Z 20' AGL



Tubing Detail

	Length	Depth
KB - pmp tee	14 00	14 00
+397 jts 2-7/8" 6.5# L80 8rd EUE tbg	12598 5	12612 55
2-7/8" SN	1 10	12613.65
211 Stage TD460 #12 MNL UHP Pump	18 45	12632.10
140 Stage TD460 Pump	12 00	12644 10
194 Stage TD460 #11 HSS AFLAS Pump	16.20	12660 30
TR4 BOI	1 00	12661 30
TR4 STD AFLAS Seal	5.30	12666 60
TR4 STD HL/HT 98L HSS Seal w/ Adaptor	5 55	12672 15
TR4-92 HTI UT 80 HP 2155V/24A SS H Motor	21 15	12693 30
SMTGUARD V HT Sensor Assembly	3 00	12696 30

12,700' #4 Galv 5kV PL450 Lead flat cable
70' #6 Monel KELB motor flat cable

Perfs

12998-13000,13005-07,14-20,63-66,70-75
5-1/2" 17# P110 & N80 LTC Csg
TOC @ 3500' (Temp Survey) (2nd Stage)

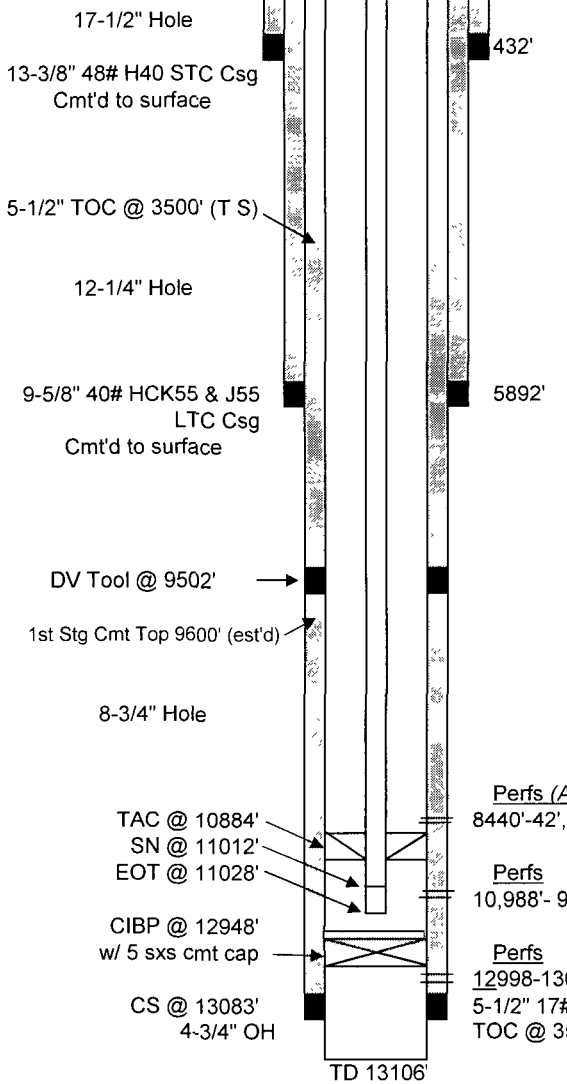
G.Mendenhall
8/10/2012

OPL 4 State #1

Proposed Wellbore Schematic

Dr'd 3/2005

KB 3894'
GL 3874'
Z. 20' AGL



Tubing Detail

	Length	Depth
KB - pmp tee	14 00	14 00
+342 jts 2-7/8" 6 5# L80 8rd EUE tbg	10867 4	10881 39
2-7/8"x 5-1/2" TAC	2 85	10884 24
4 jts 2-7/8" L-80 tbg	127 10	11011 35
2-7/8" SN	1 10	11012 45
2-7/8" Perf'd OPMA	15 50	11027 95

Rod Detail

	Length
1-1/2" SM PR	26 00
7/8" N97 Pony Rods (as needed)	-
7/8" N97 HS Rods w/ SH T-Cplgs	4000 00
3/4" N97 HS Rods w/ FH T-Cplgs	7000 00
1-1/2" K-Bars w/ fishing necks	50 00
O/F Tool	1 00
2-1/2"x 1-1/4"x 25' RHBC HVR pump	25 00
1-1/4" GA	12 00

Perfs (Alternative)

8440'-42', 48'-50', 58', 80'-90', 8504', 18'-20' (2 spf / 44 holes)

Perfs

10,988'- 94' (2 spf / 14 holes)

Perfs

12998-13000, 13005-07, 14-20, 63-66, 70-75
5-1/2" 17# P110 & N80 LTC Csg
TOC @ 3500' (Temp Survey) (2nd Stage)

G Mendenhall
8/10/2012