

HYDROGEN SULFIDE CONTINGENCY PLAN**FOR DRILLING/WORKOVER/FACILITY****HOBBS OCD****ROCA PRODUCTION, INC.****AUG 01 2012****OUTLAW "22" FEDERAL COM. #1H****660' FNL & 1980' FEL****RECEIVED****SECTION 22 T20S-R33E LEA CO. NM****TABLE OF CONTENTS**

COVER PAGE AND REASONING	page 1
GENERAL EMERGENCY PLAN	page 3
EMERGENCY PROCEDURE FOR UNCONTROLLED RELEASES OF H₂S	page 3-4
EMERGENCY NUMBERS AND	page 4-5
PRODUCTION OF THE GENERAL RADIUS OF EXPOSURE (ROE)	page 6
PUBLIC EVACUATION PLAN	page 6-7
PROCEDURE FOR IGNITING AN UNCONTROLLABLE CONDITION:	
PREOCEURE FOR IGNITION	page 7
REQUIRED EMERGENCY EQUIPMENT	page 8
USING SELF CONTAINED BREATHING AIR EQUIPMENT (SCBA)	page 9
RESCUE & FIRST AID FOR VICTIMS OF HYDROGEN SULFIDE (H₂S) POISONING	page 9-10
H₂S TOXIC EFFECTS	page 11
H₂S PHYSICAL EFFECTS	page 11
LOCATION MAP	page 12-13

HYDROGEN SULFIDE CONTINGENCY PLAN

FOR DRILLING/WORKOVER/FACILITY

ROCA PRODUCTION, INC.

OUTLAW "22" FEDERAL COM. #1H

660' FNL & 1980' FEL

SECTION 22 T20S-R33E LEA CO. NM

General H2S Emergency Actions:

1. All personnel will immediately evacuate to an up-wind and if possible up-hill "safe area"
2. If for any reason a person must enter the hazardous area, they must wear a SCBA (Self Contained Breathing Apparatus)
3. Always use the "buddy system"
4. Isolate the well/problem if possible
5. Account for all personnel
6. Display the proper colors warning all unsuspecting personnel of the danger at hand.
7. Contact the Company personnel as soon as possible if not at the location. (use the enclosed call list as instructed

At this point the company representative will evaluate the situation and coordinate the necessary duties to bring the situation under control, and if necessary, the notification of the emergency response agencies and nearby residents.

EMERGENCY PROCEDURES FOR AN UNCONTROLLABLE RELEASE OF H2S

1. All personnel will wear the self contained breathing apparatus.
2. Remove all personnel to the "safe area". (always use the buddy system).
3. Contact company personnel if not on location.
4. Set in motion the steps to protect and or remove the general public to an upwind "safe area". Maintain strict security & safety procedures while dealing with the source.
5. No entry to any unauthorized personnel.
6. Notify the appropriate agencies: City Police-City Street (s)
State Police- State Rd
County Sheriff – County Rd.
7. Call the NMOCD & BLM

HYDROGEN SULFIDE CONTINGENCY PLAN

FOR DRILLING/WORKOVER/FACILITY

ROCA PRODUCTION, INC.

OUTLAW "22" FEDERAL COM. #1H

660' FNL & 1980' FEL

SECTION 22 T20S-R33E LEA CO. NM

If at this time the supervising person determines the release of H₂S cannot be contained to the site location and the general public is in harms way he will take the necessary steps to protect the workers and the public.

EMERGENCY CALL LIST: (Start and continue until ONE of these people have been contacted)

	OFFICE	MOBILE	HOME
Steve Douglas	432-683-6812		
Drilling manager when a drilling company has been contracted Phone #'s will be provided.			

EMERGENCY RESPONSE NUMBERS:

State Police:	Eddy County		575 748 9718
State Police:	Lea County		575 392 5588
Sheriff	Eddy County		575 746 2701
Sheriff	Lea County		
Emergency Medical Ser	Eddy County		911 or 575 746 2701
(Ambulance)	Lea County	Eunice	911 or 575 394 3258
Emergency Response	Eddy County SERC		575 476 9620
	Lea County		
Artesia Police Dept			575 746 5001
Artesia Fire Dept			575 746 5001
Carlsbad Police Dept			575 885 2111
Carlsbad Fire Dept			575 885 3125
Loco Hills Police Dept			575 677 2349

HYDROGEN SULFIDE CONTINGENCY PLAN

FOR DRILLING/WORKOVER/FACILITY

ROCA PRODUCTION, INC.

OUTLAW "22" FEDERAL COM. #1H

660' FNL & 1980' FEL

SECTION 22 T20S-R33E LEA CO. NM

Jal Police Dept		575 395 2501
Jal Fire Dept		575 395 2221
Jal ambulance		575 395 2221
Eunice Police Dept		575 394 0112
Eunice Fire Dept		575 394 3258
Eunice Ambulance		575 394 3258
Hobbs Police Dept		
NMOCD	District 1 (Lea, Roosevelt, Curry)	575 393 6161
	District 2 (Eddy Chavez)	575 748 1283
Lea County Information		575 393 8203
Midland Safety	Lea/Eddy County	432 520 3838
		888 262 4964
Indian Fire & Safety	Lea/Eddy County	800 530 8693
		575 393 3093
Baker Pressure pmp'g	Artesia	575 746 3140
	Hobbs	800 530 4485
		575 392 5556
	Midland	800 694 6601
		432 685 8900
Halliburton	Artesia	800 844 8451
	Hobbs	800 844 8451
	Midland	800 844 8451
Schlumberger pmp'd Ser	Hobbs	800 548 9196
		575 393 6186
	Artersia	575 748 1391
	Midland	432 683 1887
Wild Well Control	Midland	281 784 4700
		281 443 4873
Boots & Coots		800 256 9688
		281 931 8884

HYDROGEN SULFIDE CONTINGENCY PLAN

FOR DRILLING/WORKOVER/FACILITY

ROCA PRODUCTION, INC.

OUTLAW "22" FEDERAL COM. #1H

660' FNL & 1980' FEL

SECTION 22 T20S-R33E LEA CO. NM

PROTECTION OF THE GENERAL PUBLIC (ROE):

- 100 ppm at any public area (any place not associated with this site)
- 500 ppm at any public road (any road which the general public may travel)
- 100 ppm radius of ¼ mile in New Mexico will be assumed if there is insufficient data to do the calculations, and there is a reasonable expectation that H2S could be present in concentrations greater than 100 ppm in the gas mixture

CALCULATIONS FOR THE 100 PPM (ROE) "Pasquill-Gifford equation"

$X = [(1.589) (\text{mole fraction}) (Q\text{-volume in std cu ft})] \text{ to the power of } (0.6258)$

CALCULATION FOR THE 500 PPM ROE:

$X = [(.4546) (\text{mole fraction}) (Q\text{-volume in std cu ft})] \text{ to the power of } (0.6258)$

Example:

If a well/facility has been determined to have 150 / 500 ppm H2S in the gas mixture and the well/facility is producing at a gas rate of 100 MCFPD then:

150 ppm $X = [(1.589) (.00015) (100,000 \text{ cfd})] \text{ to the power of } (.6258)$
 $X = 7 \text{ ft}$

500 ppm $X = [(.4546) (.0005) (100,000 \text{ cfd})] \text{ to the power of } (.6258)$
 $X = 3.3 \text{ ft.}$

(These calculations will be forwarded to the appropriate District NMOCD office when Applicable)

PUBLIC EVACUATION PLAN:

- 1. Notification of the emergency response agencies of the hazardous condition and implement evacuation procedures.
- A trained person in H2S safety, shall monitor with detection equipment the H2S concentration, wind and area exposure (ROE). This person will determine the outer perimeter of the hazardous area. The extent of the evacuation area will be determined from the data being collected. Monitoring shall continue until the situation has been

HYDROGEN SULFIDE CONTINGENCY PLAN

FOR DRILLING/WORKOVER/FACILITY

ROCA PRODUCTION, INC.

OUTLAW "22" FEDERAL COM. #1H

660' FNL & 1980' FEL

SECTION 22 T20S-R33E LEA CO. NM

resolved: (All monitoring equipment shall be UL approved, for use in class 1 groups A,B,C &D, Division 1, hazardous locations. All monitor will have a minimum capability of measuring H₂S , oxygen, and flammable values).

- Law enforcement shall be notified to set up necessary barriers and maintain such for the duration of the situation as well as aid in the evacuation procedure.
- The company supervising personnel shall stay in communication with all agencies through out the duration of the situation and inform such agencies when the situation has been contained and the effected area(s) is safe to enter.

PROCEDURE FOR IGNITING AN UNCONTROLABLE CONDITION:

- 1. Human life and/or property are in danger
- 2. There is no hope of bringing the situation under control with the prevailing conditions at the site.

INSTRUCTION FOR IGNITION:

- 1. Two people are required. They must be equipped with positive pressure, self contained breathing apparatus and a "D" ring style full body, OSHA approved safety harness. Non flammable rope will be attached.
- 2. One of the people will be qualified safety person who will test the atmosphere for H₂S, Oxygen & LFL. The other person will be the company supervisor, he is responsible for igniting the well.
- 3. Ignite up wind from a distance no closer than necessary. Make sure that where you ignite from has the maximum escape avenue available. A 25 mm flare gun shall be used, with a \pm 500 ft. range to ignite the gas.
- 4. Prior to ignition, make a final check for combustible gases.
- 5. Following ignition, continue with the emergency actions & procedures as before.

HYDROGEN SULFIDE CONTINGENCY PLAN

FOR DRILLING/WORKOVER/FACILITY

ROCA PRODUCTION, INC.

OUTLAW "22" FEDERAL COM. #1H

660' FNL & 1980' FEL

SECTION 22 T20S-R33E LEA CO. NM

resolved: J

REQUIRED EMERGENCY EQUIPMENT:

- **1. Breathing apparatus:**
 - Rescue Packs (SCBA) – 1 unit shall be placed at each breathing area, 2 shall be stored in the safety trailer.
 - Work/Escapes packs – 4 packs shall be stored on the rig floor with sufficient air hose not to restrict work activity.
 - Emergency Escape Packs – 4 packs shall be stored in the doghouse for emergency evacuation.
- **2. Signage & Flagging:**
 - One color code condition sign will be placed at the entrance to the site reflecting the possible conditions at the site.
 - A colored condition flag will be on display, reflecting the condition at the site at the time.
- **3. Briefing Area: two perpendicular areas will be designated by signs and readily accessible.**
- **4. Wind Socks: Two wind socks will be placed in strategic locations, visible from all angles.**
- **5. H₂S detectors and alarms: The stationary detector with three sensors will be placed in the upper dog house if equipped, set to visually alarm @ 10 ppm and audible @ 14 ppm. Calibrate a minimum of every 30 days or as needed. The sensors will be placed in the following places: (Gas sample tubes will be stored in the safety trailer)**
 - Rig Floor
 - Bell Nipple
 - End of Flow line or where well bore fluid are being discharged.
- **6. Auxiliary Rescue Equipment:**

HYDROGEN SULFIDE CONTINGENCY PLAN

FOR DRILLING/WORKOVER/FACILITY

ROCA PRODUCTION, INC.

OUTLAW "22" FEDERAL COM. #1H

660' FNL & 1980' FEL

SECTION 22 T20S-R33E LEA CO. NM

- Two OSHA full body harness
- 100 ft 5/8 inch OSHA approved rope
- 1-20# class ABC fire extinguisher
- Communication via cell phones on location and vehicles on location.

USING SELF CONTAINED BREATHING AIR EQUIPMENT (SCBA):

- (SCBA) SHOULD BE WORN WHEN ANY OF THE FOLLOWING ARE PERFORMED:
 - Working near the top or on top of a tank
 - Disconnecting any line where H₂S can reasonably be expected
 - Sampling air in the area to determine if toxic concentrations of H₂S exist.
 - Working in areas where over 10 ppm on H₂S has been detected.
 - At any time there is a doubt as the level of H₂S in the area.
- All personnel shall be trained in the use of SCBA prior to working in a potentially hazardous location.
- Facial hair and standard eyeglasses are not allowed with SCBA.
- Contact lenses are never allowed with SCBA.
- Air quality shall be continuously be checked during the entire operation.
- After each use, the SCBA unit shall be cleaned, disinfected, serviced and inspected
- All SCBA shall be inspected monthly.

RESCUE AND FIRST AID FOR VICTIMS OF HYDROGEN SULFIDE (H₂S) POISONING:

- Do not panic
- Remain Calm & think
- Get on the breathing apparatus

HYDROGEN SULFIDE CONTINGENCY PLAN

FOR DRILLING/WORKOVER/FACILITY

ROCA PRODUCTION, INC.

OUTLAW "22" FEDERAL COM. #1H

660' FNL & 1980' FEL

SECTION 22 T20S-R33E LEA CO. NM

- Remove the victim to the safe breathing area as quickly as possible. Up wind an uphill from source or cross wind to achieve upwind.
- Notify emergency response personnel.
- Provide artificial respiration and or CPR, as necessary
- Remove all contaminated clothing to avoid further exposure.
- A minimum of two personnel on location shall be trained in CPR and First Aid.

HYDROGEN SULFIDE TOXIC EFFECTS

H₂S is extremely toxic. The acceptable ceiling for eight hours of exposure is 10 ppm, which is .001% by volume. H₂S is approximately 20% heavier than air (Sp. Gr= 1.19)(Air = 1) and colorless. It forms an explosive mixture with air between 4.3% and 46%. By volume hydrogen sulfide is almost as toxic as hydrogen cyanide and is 5-6 times more toxic than carbon monoxide.

Various Gases

COMMON NAME	CHEMICAL ABBREV.	SPECIFIC GRVTY.	THRESHOLD LIMITS	HAZARDOUS LIMITS	LETHAL CONCENTRATIONS
Hydrogen Sulfide	H ₂ S	1.19	10ppm 15 ppm	100 ppm/hr	600 ppm
Hydrogen Cyanide	HCN	0.94	10 ppm	150 ppm/hr	300 ppm
Sulfur Dioxide	SO ₂	2.21	2 ppm	N/A	1000 ppm
Chlorine	CL ₂	2.45	1 ppm	4 ppm/hr	1000 ppm
Carbon Monoxide	CO	0.97	50 ppm	400 ppm/hr	1000 ppm
Carbon Dioxide	CO ₂	1.52	5000 ppm	5%	10%
Methane	CH ₄	0.55	90,000	Combustible @ 5%	N/A

Threshold limit: Concentrations at which it is believed that all workers may be repeatedly exposed, day after day without adverse effects.

Hazardous Limit: Concentrations that may cause death

Lethal

Concentrations: Concentrations that will cause death with short term exposure

Threshold limit -

10 ppm: NIOSH guide to chemical hazards

PHYSICAL EFFECTS OF HYDROGEN SULFIDE:

CONCENTRATION	PHYSICAL EFFECTS
.001% 10 PPM	Obvious and unpleasant odor. Safe for 8 hr exposure
.005% 50 ppm	Can cause some flu like symptoms and can cause pneumonia
.01% 100 ppm	Kills the sense of smell in 3-15 minutes. May irritate the eyes and throat.
.02% 200 ppm	Kills the sense of smell rapidly. Severly irritates the eyes and throat. Severe flu like symptoms after 4 or more ours. May cause lung damage and or death.
.06% 600 ppm	Loss of consciousness quickly, death will result if not rescued promptly.

HYDROGEN SULFIDE CONTINGENCY PLAN

FOR DRILLING/WORKOVER/FACILITY

ROCA PRODUCTION, INC.

OUTLAW "22" FEDERAL COM. #1H

660' FNL & 1980' FEL

SECTION 22 T20S-R33E LEA CO. NM

A. All personnel shall receive proper H₂S training in accordance with Onshore Order III.C.3.a.

B. Briefing Area: two perpendicular areas will be designated by signs and readily accessible.

C. Required Emergency Equipment:

- Well control equipment
 - a. Flare line 150' from wellhead to be ignited by flare gun.
 - b. Choke manifold with a remotely operated choke.
 - c. Mud/gas separator

- Protective equipment for essential personnel.

Breathing apparatus:

- a. Rescue Packs (SCBA) — 1 unit shall be placed at each breathing area, 2 shall be stored in the safety trailer.
- b. Work/Escapes packs — 4 packs shall be stored on the rig floor with sufficient air hose not to restrict work activity.
- c. Emergency Escape Packs — 4 packs shall be stored in the doghouse for emergency evacuation.

Auxiliary Rescue Equipment:

- a. Stretcher
- b. Two OSHA full body harness
- c. 100 ft 5/8 inch OSHA approved rope
- d. 1-20# class ABC fire extinguisher

- H₂S detection and monitoring equipment:

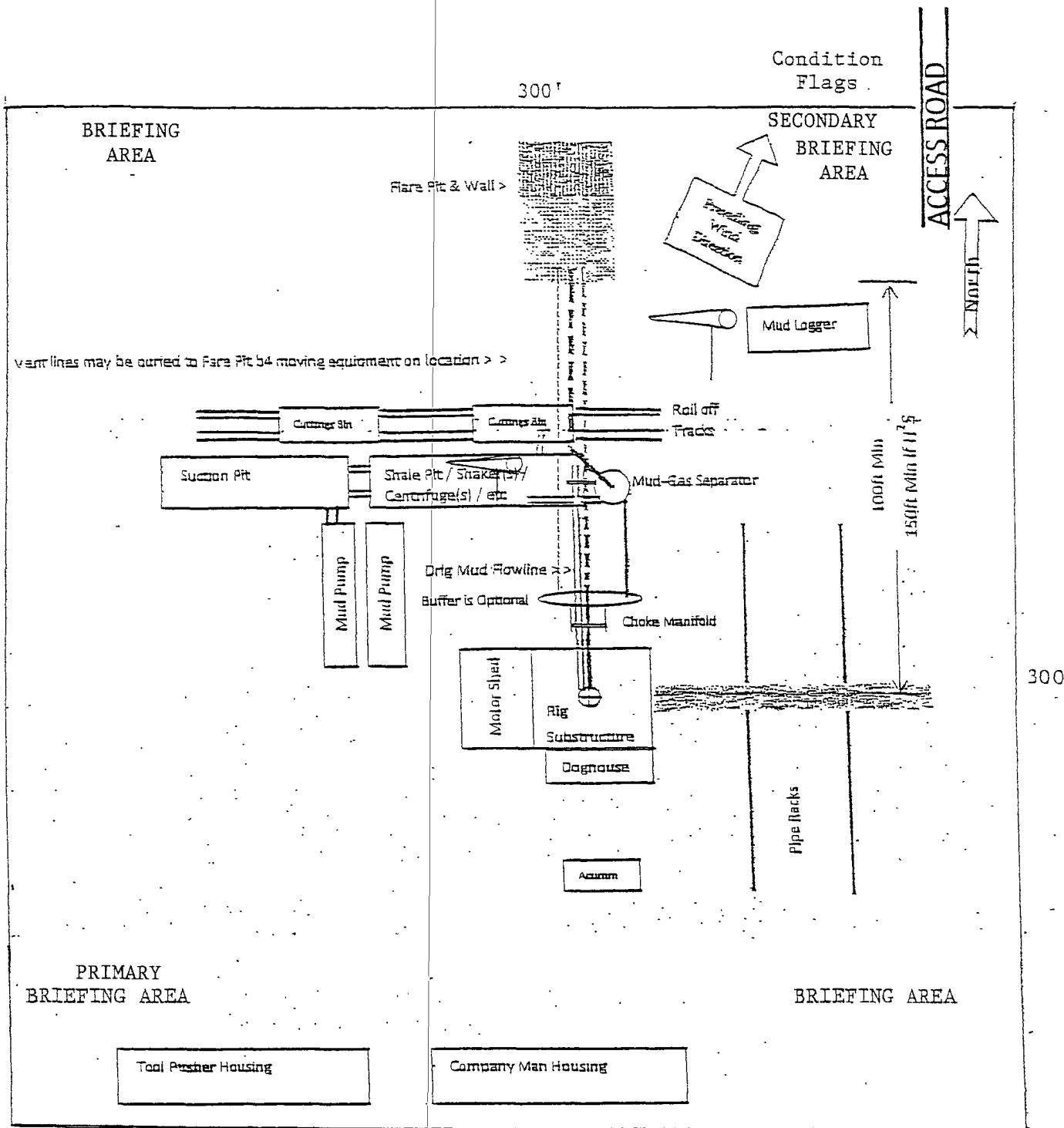
The stationary detector with three sensors will be placed in the upper dog house if equipped, set to visually alarm @ 10 ppm and audible @ 14 ppm. Calibrate a minimum of every 30 days or as needed. The sensors will be placed in the following places: Rig floor / Bell nipple / End of flow line or where well bore fluid is being discharged.

(Gas sample tubes will be stored in the safety trailer)

- Visual warning systems.
 - a. One color code condition sign will be placed at the entrance to the site reflecting the possible conditions at the site.
 - b. A colored condition flag will be on display, reflecting the current condition at the site at the time.
 - c. Two wind socks will be placed in strategic locations, visible from all angles.
- Mud program:

The mud program has been designed to minimize the volume of H₂S circulated to surface. The operator will have the necessary mud products to minimize hazards while drilling in H₂S bearing zones.
- Metallurgy:
 - a. All drill strings, casings, tubing, wellhead, blowout preventer, drilling spool, kill lines, choke manifold and lines, and valves shall be suitable for H₂S service.
 - b. All elastomers used for packing and seals shall be H₂S trim.
- Communication:

Communication will be via two way radio in emergency and company vehicles. Cell phones and land lines where available.

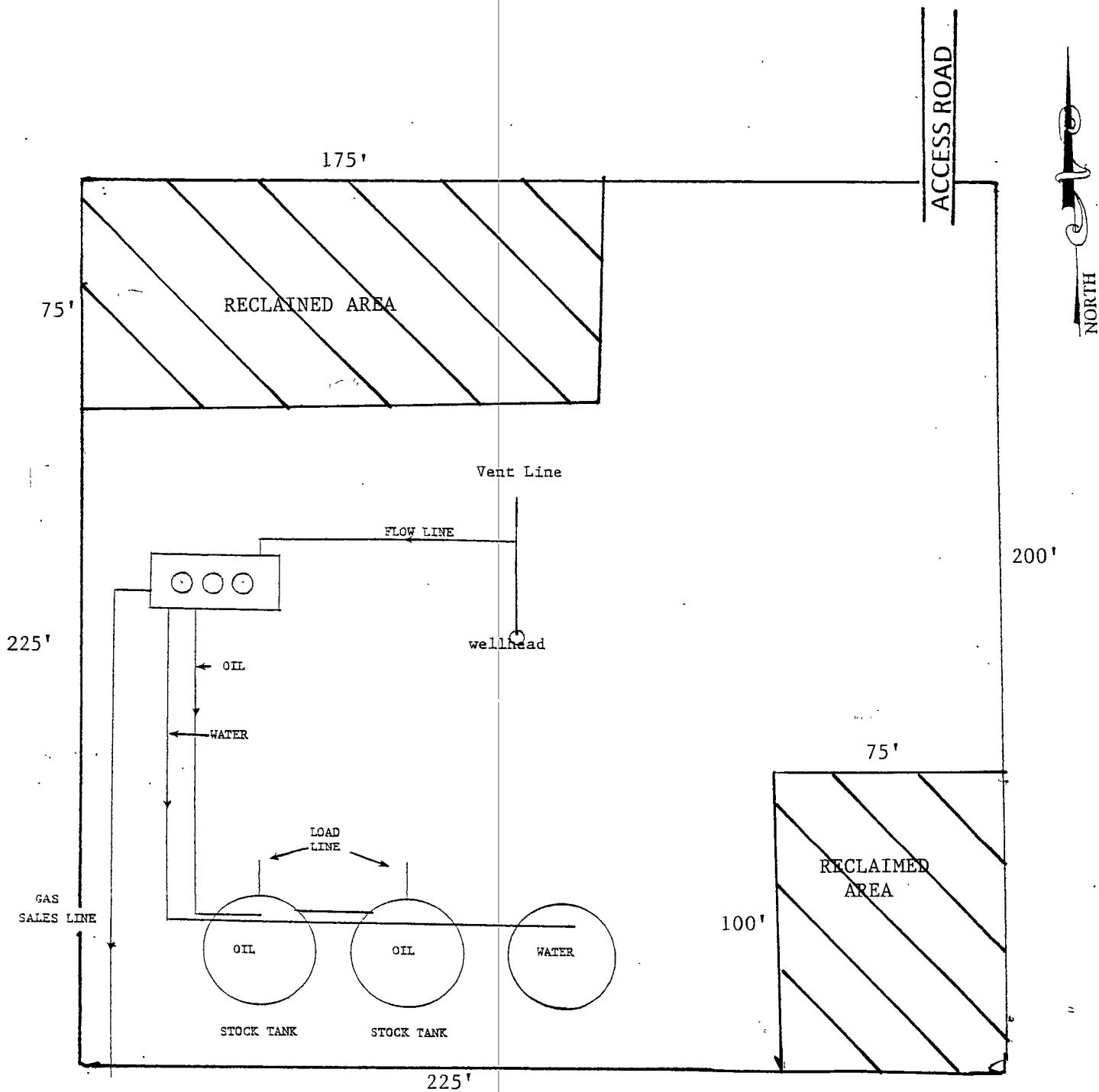


Generic Drill Site
Layout

Preplanning reasonable spacing accommodations for a useable "Closed Loop" drillsite layout is challenging. Particular site specific conflicts need to be resolved. This generic APD plat was prepared to demonstrate several necessary elements. The plat should include a north arrow, prevailing wind direction, spacing access for truck removal of cutting bins, flare pit location, and piping provision to vent all combustible gas to the flare pit. Include the choke manifold and mud-gas separator location and their connection routing.

EXHIBIT "D"
RIG PLAT LAYOUT

ROCA PRODUCTION, INC.
OUTLAW "22" FEDERAL COM. #1H
UNIT "B" SECTION 22
T20S-R33E LEA CO. NM



PROPOSED AREA TO BE RECLAIMED

ROCA PRODUCTION, INC.
 OUTLAW "22" FEDERAL COM. #1H
 UNIT "B" SECTION 22
 T20S-R33E LEA CO. NM