

DISTRICT I
1625 N. French Dr., Hobbs, NM 88240
DISTRICT II
1301 W. Grand Avenue, Artesia, NM 88210
DISTRICT III
1000 Rio Brazos Rd., Aztec, NM 87410
DISTRICT IV
1220 S. St. Francis Dr., Santa Fe, NM 87505

State of New Mexico
Energy, Minerals and Natural Resources Department

Form C-102
Revised July 18, 2010

Submit one copy to appropriate
District Office

OIL CONSERVATION DIVISION
1220 South St. Francis Dr.
Santa Fe, New Mexico 87505

WELL LOCATION AND ACREAGE DEDICATION PLAT

☐ AMENDED REPORT

| | | |
|-----------------------------------|--|---|
| API Number 30-025-40481 | Pool Code 22900 | Pool Name EWICE; B-T-D, NORTH |
| Property Code 37346 | Property Name WBDU | Well Number 107 |
| OGRID No. 873 | Operator Name APACHE CORPORATION | Elevation 3524' |

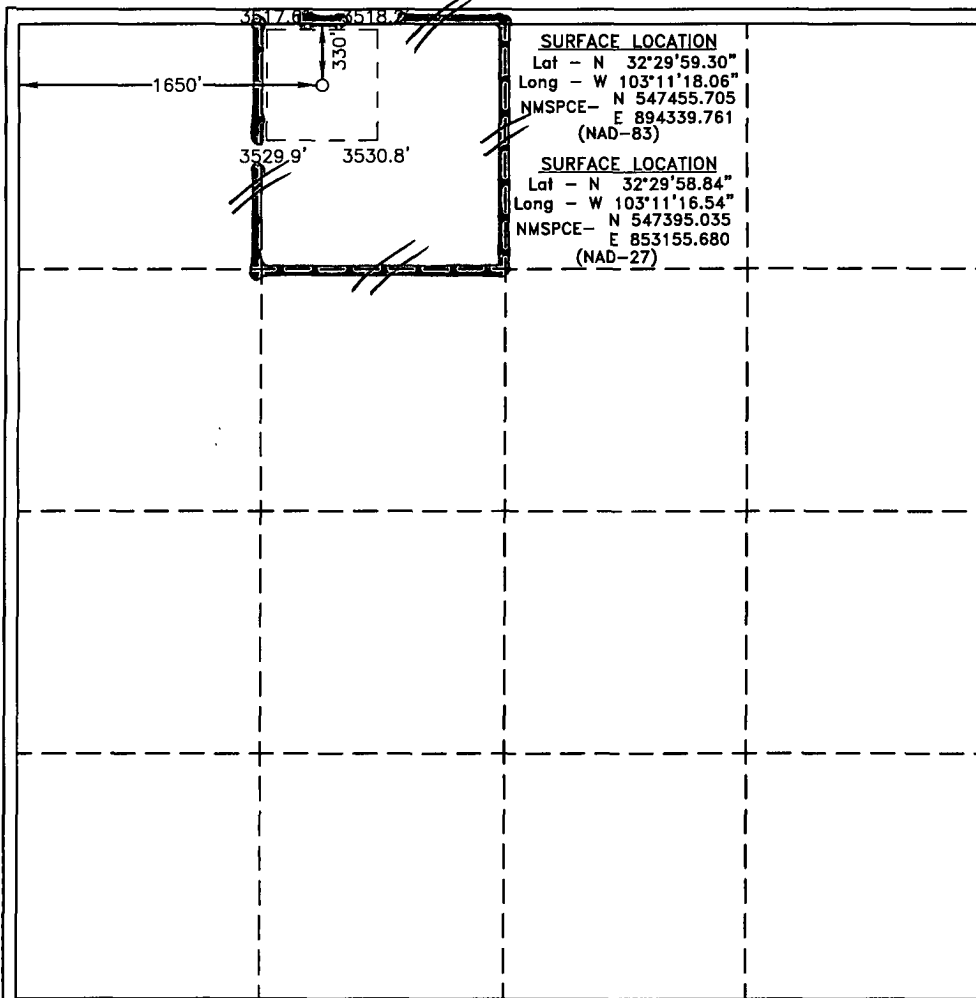
Surface Location

| | | | | | | | | | |
|---------------------------|---------------------|-------------------------|----------------------|---------|-----------------------------|----------------------------------|------------------------------|-------------------------------|----------------------|
| UL or lot No. C | Section 8 | Township 21 S | Range 37 E | Lot Idn | Feet from the 330 | North/South line NORTH | Feet from the 1650 | East/West line WEST | County LEA |
|---------------------------|---------------------|-------------------------|----------------------|---------|-----------------------------|----------------------------------|------------------------------|-------------------------------|----------------------|

Bottom Hole Location If Different From Surface

| | | | | | | | | | |
|------------------------------|-----------------|--------------------|-----------|---------|---------------|------------------|---------------|----------------|--------|
| UL or lot No. | Section | Township | Range | Lot Idn | Feet from the | North/South line | Feet from the | East/West line | County |
| Dedicated Acres 40 | Joint or Infill | Consolidation Code | Order No. | | | | | | |

NO ALLOWABLE WILL BE ASSIGNED TO THIS COMPLETION UNTIL ALL INTERESTS HAVE BEEN CONSOLIDATED
OR A NON-STANDARD UNIT HAS BEEN APPROVED BY THE DIVISION



| | |
|--|--|
| OPERATOR CERTIFICATION I hereby certify that the information contained herein is true and complete to the best of my knowledge and belief, and that this organization either owns a working interest or unleased mineral interest in the land including the proposed bottom hole location or has a right to drill this well at this location pursuant to a contract with an owner of such a mineral or working interest, or to a voluntary pooling agreement or a compulsory pooling order heretofore entered by the division. Reesa Holland 8/10/12 Signature Date REESA HOLLAND Printed Name Reesa.Holland@apachecorp.com Email Address | |
| SURVEYOR CERTIFICATION I hereby certify that the well location shown on this plat was plotted from field notes of actual surveys made by me or under my supervision and that the same is true and correct to the best of my belief. Date Surveyed Signature & Seal of Professional Surveyor Certificate No. Gary L. Jones 7977 BASIN SURVEYS 24877 | |

AUG 29 2012