

District I

1625 N. French Dr., Hobbs, NM 88240

District II

1301 W. Grand Avenue, Artesia, NM 88210

District III

1000 Rio Brazos Road, Aztec, NM 87410

District IV

1220 S. St Francis Dr., Santa Fe, NM 87505

State of New Mexico

Energy Minerals and Natural Resources

Form C-101

June 16, 2008

HOBBS OCD

AUG 22 2012

Oil Conservation Division

1220 South St. Francis Dr.

Santa Fe, NM 87505

Submit to appropriate District Office

☐ AMENDED REPORTRECEIVED
APPLICATION FOR PERMIT TO DRILL, RE-ENTER, DEEPEN, PLUGBACK, OR ADD A ZONE

¹ Operator Name and Address Apache Corp 303 Veterans Airpark Ste 3000 Midland TX 79705		² OGRID Number 873
³ Property Code 302342		⁴ API Number 30 - 025-33045
⁵ Property Name Monument Abo 35		⁶ Well No. 002
⁹ Proposed Pool 1 Monument Paddock Yeso Northwest <97089>		¹⁰ Proposed Pool 2

⁷ Surface Location

UL or lot no.	Section	Township	Range	Lot Idn	Feet from the	North/South line	Feet from the	East/West line	County
M	35	19S	36E		660	South	330	West	Lea

⁸ Proposed Bottom Hole Location If Different From Surface

UL or lot no	Section	Township	Range	Lot Idn	Feet from the	North/South line	Feet from the	East/West line	County

Additional Well Information

¹¹ Work Type Code N	¹² Well Type Code O	¹³ Cable/Rotary R	¹⁴ Lease Type Code P	¹⁵ Ground Level Elevation 3612'
¹⁶ Multiple N	¹⁷ Proposed Depth 5500'	¹⁸ Formation Paddock	¹⁹ Contractor	²⁰ Spud Date 8/15/1995

²¹ Proposed Casing and Cement Program

Hole Size	Casing Size	Casing weight/foot	Setting Depth	Sacks of Cement	Estimated TOC
14-3/4"	11-3/4"	47#	441'	375 sx Class C	Surface
11"	8-5/8"	24#	4322'	1025 sx Class C	
7-7/8"	5-1/2"	15.5#	8090'	436 sx Class C	6127'

²² Describe the proposed program. If this application is to DEEPEN or PLUG BACK, give the data on the present productive zone and proposed new productive zone. Describe the blowout prevention program, if any. Use additional sheets if necessary.

Apache intends to abandon the Abo and recomplete the Paddock.

Permit Expires 2 Years From Approval
Date Unless Drilling Underway
plugback

²³ I hereby certify that the information given above is true and complete to the best of my knowledge and belief.		OIL CONSERVATION DIVISION	
Signature: <i>Reesa Holland</i>		Approved by: <i>[Signature]</i>	
Printed name: Reesa Holland		Title: Petroleum Engineer	
Title: Sr. Staff Engineering Tech		Approval Date: AUG 30 2012	
E-mail Address: Reesa.Holland@apachecorp.com		Expiration Date:	
Date: 08/20/2012	Phone: 432/818-1062	Conditions of Approval Attached <input type="checkbox"/>	

District I

1625 N. French Dr., Hobbs, NM 88240

District II

1301 W. Grand Avenue, Artesia, NM 88210

District III

1000 Rio Brazos Rd., Aztec, NM 87410

District IV

1220 S. St. Francis Dr., Santa Fe, NM 87505

State of New Mexico
Energy, Minerals & Natural Resources Department
OIL CONSERVATION DIVISION
1220 South St. Francis Dr.
Santa Fe, NM 87505

AUG 30 2012

RECEIVED

Revised October 12, 2005

Submit to Appropriate District Office

State Lease - 4 Copies

Fee Lease - 3 Copies

☐ AMENDED REPORT

WELL LOCATION AND ACREAGE DEDICATION PLAT

API Number 30-025-33045		Pool Code 97089	Pool Name Monument; Yeso, Northwest
Property Code 302342	Property Name Monument Abo 35		Well Number 002
OGRID No. 873	Operator Name Apache Corporation: 303 Veterans Airpark Lane, Suite 3000 Midland, TX 79705		Elevation 3612' GL

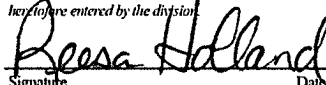
10 Surface Location

UL or lot no.	Section	Township	Range	Lot Idn	Feet from the	North/South line	Feet from the	East/West line	County
M	35	19S	36E		660	South	330	West	Lea

11 Bottom Hole Location If Different From Surface

UL or lot no.	Section	Township	Range	Lot Idn	Feet from the	North/South line	Feet from the	East/West line	County
Dedicated Acres 40	Joint or Infill	Consolidation Code		Order No.					

No allowable will be assigned to this completion until all interests have been consolidated or a non-standard unit has been approved by the division.

<div style="border: 2px solid black; padding: 5px; width: 150px; height: 150px; position: relative;"> 16 330' 660' </div>					17 OPERATOR CERTIFICATION <i>I hereby certify that the information contained herein is true and complete to the best of my knowledge and belief, and that this organization either owns a working interest or unleased mineral interest in the land including the proposed bottom hole location or has a right to drill this well at this location pursuant to a contract with an owner of such a mineral or working interest, or to a voluntary pooling agreement or a compulsory pooling or order heretofore entered by the division.</i> <div style="text-align: right;">  08/30/2012 </div> <div style="display: flex; justify-content: space-between;"> Signature Date </div> <div style="border-top: 1px solid black; padding-top: 5px;"> Reesa Holland Printed Name </div>
					18 SURVEYOR CERTIFICATION <i>I hereby certify that the well location shown on this plat was plotted from field notes of actual surveys made by me or under my supervision, and that the same is true and correct to the best of my belief.</i>
					Date of Survey Signature and Seal of Professional Surveyor: Certificate Number

Monument Abo #35-2

API # 30-025-33045

Sec 35, T19S, R36E

Elevation: 3624' KB, 3612' GL

TD: 8,092'

PBTD: 7,115' CIBP

Casing Record: 11-3/4" 42# @ 441' w/ 375 sxs
8-5/8" 28# @ 4322' w/ 1025 sxs
5-1/2" 15.5# K-55 @ 8,090' w/ 436 sxs

Objective: Squeeze cement to surface and recomplete the Paddock

AFE: PA-12-4229

1. MIRU unit. Kill well as necessary. Unload 2-7/8" J-55 WS. ND WH. NU BOP.
2. MIRU WL. NU lubricator. RIH with 3-3/8" csg gun or available equivalent perforator and perforate squeeze holes from 5700-02 w/ 2 jspf 60° phasing (4 holes). POOH with perf guns and rig down WL. **Correlate to Schlumberger Compensated Neutron Litho-Density Natural Gamma Ray log dated 9/18/1995.**
3. TIH w/ SN and PKR on WS. Set PKR at 5,650' and establish circulation through 8-5/8" x 5-1/2" annulus. Circulate annulus clean. POOH w/ PKR and WS.
4. RIH w/ cement retainer on WS. Close casing, break circulation and ensure circulation can be established through the 8-5/8" x 5-1/2" annulus. Set cement retainer at \pm 5,650.
5. MIRU cement services. Mix and pump 810 sxs cement to surface per recommendations.
6. Sting out of retainer and POOH with WS. RDMO cement services. WOC.
7. MIRU WL. NU lubricator. RIH with 3-3/8" csg gun or available equivalent perforator and perforate the Paddock from 5,470-5,500 w/ 2 jspf 60° phasing (60 holes). TOH w/ perforators. RD WL. **Correlate to Schlumberger Compensated Neutron Litho-Density Natural Gamma Ray log dated 9/18/1995.**
8. TIH w/ SN and PKR on WS. Spot \pm 50 gallons acid across perforations. Set PKR just above new perforations at \pm 5,420'. Test backside to 1000 psi.
9. MIRU acid services. Acidize down tbg w/ 2,500 gals of 15% NEFE HCL w/ additives using 90 ball sealers to divert evenly spaced through the job as a max rate but do not exceed **5,800 psi** surface treating pressure. Displace to bottom perf with 33 BBLS of flush. Surge balls. RDMO acidizing service.
10. RU swab equipment and recover load and swab test perms for fluid entry and oil cut. Report results to Midland. RD swab equipment. *If unproductive, release PKR and POOH. RIH w/ CIBP and set at \pm 5440 w/ 35' of cmt. Release rig and turn well over to PA department.*
11. Kill well if necessary. Release PKR and TOH with PKR and WS.
12. Run production tubing and rods as per the Monument office specifications. RDMO PU.
13. Set pumping unit. Connect electrical service. Construct and tie in flow-line to. Place well into production and on test for 2 weeks. Have a chemical rep test fluids and put well on the appropriate chemical maintenance program.

GL=3612'
KB=3624'
Spud:8/15/95

Apache Corporation – Monument Abo #35-2

Wellbore Diagram – Proposed

Date : 6/18/2012

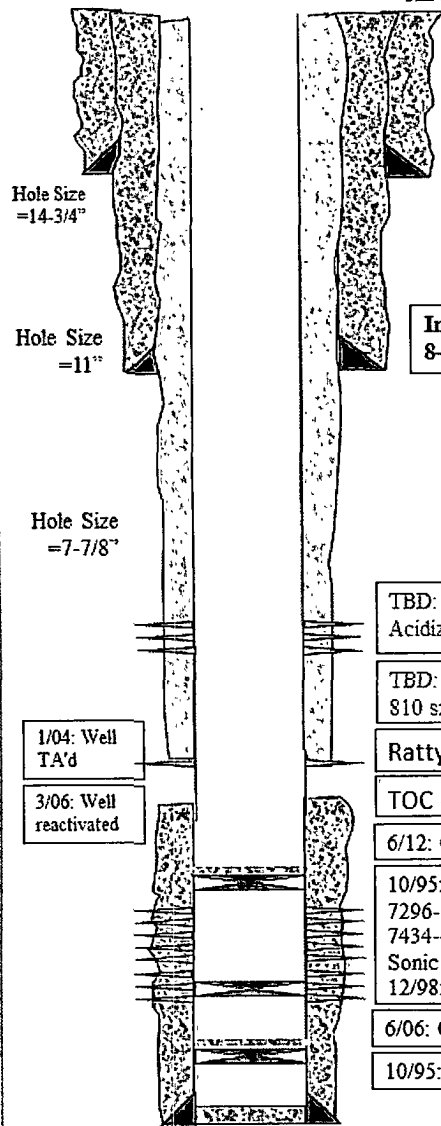
API: 30-025-33045

Surface Location

R. Taylor



660' FSL & 330' FWL,
Lot M Sec 35, T19S, R36E, Lea County, NM



Surface Casing

11-3/4" 42# @ 441' w/ 375 sxs to surface

Intermediate Casing

8-5/8" 28# @ 4322' w/ 1025 sxs

TBD: Perf Paddock @ 5470-5500 w/ 2 jspf (60 holes).
Acidize 2500 gal 15% NEFE.

TBD: Perf SQZ holes @ 5700-02 w/ 2 jspf (4 holes). Squeezed
810 sxs Class C cement to surface

Ratty Cement to 5781'

TOC @ 6127'

6/12: CIBP set @ 7150 w/ 35' cmt. Well TA'd

10/95: Perf Abo @ 7198-7208; 7225-32; 7241-45; 7254-58;
7296-7333; 7336-39; 7345-92; 7402-10; 7412-17; 7425-27;
7434-48; 7464-78; 7482-87; 7507-11 w/ 2 jspf (342 holes).
Sonic hammer w/ 4000 gal 15% NEFE.
12/98: Acidized w/ 5800 gal 15% HCL

6/06: CIBP pushed to @ 7482. New PBTD

10/95: CIBP @ 7654

Production Casing

5-1/2" 15.5# K-55 @ 8090' w/ 436 sxs