

District I
1625 N French Dr., Hobbs, NM 88240
Phone (505) 393-6161 Fax: (505) 393-0720
District II
811 S First St., Artesia, NM 88210
Phone: (505) 748-1283 Fax: (505) 748-9720
District III
1000 Rio Brazos Road, Aztec, NM 87410
Phone (505) 334-6178 Fax: (505) 334-6179
District IV
1220 S St Francis Dr Santa Fe, NM 87505
Phone (505) 476-3460 Fax: (505) 476-3462

HOBBS OGD

SEP 07 2012

RECEIVED

State of New Mexico

Energy, Minerals & Natural Resources Department

OIL CONSERVATION DIVISION

1220 South St. Francis Dr.

Santa Fe, NM 87505

Form C-102

Revised August 1, 2011

Submit one copy to appropriate

District Office

☐ AMENDED REPORT

WELL LOCATION AND ACREAGE DEDICATION PLAT

¹ API Number 30-025-40743		² Pool Code 14910 06724	³ Pool Name CRUZ; DELAWARE Northeast
⁴ Property Code 39429	⁵ Property Name TAIPAN 10 STATE COM		⁶ Well Number 1H
⁷ GRID No. 6137	⁸ Operator Name DEVON ENERGY PRODUCTION COMPANY, L.P.		⁹ Elevation 3700.4

10 Surface Location

UL or lot no.	Section	Township	Range	Lot Idn	Feet from the	North/South line	Feet from the	East/West line	County
D	15	23 S	33 E		150	NORTH	710	WEST	LEA

11 Bottom Hole Location If Different From Surface

UL or lot no.	Section	Township	Range	Lot Idn	Feet from the	North/South line	Feet from the	East/West line	County
D	10	23 S	33 E		330	NORTH	330	WEST	LEA

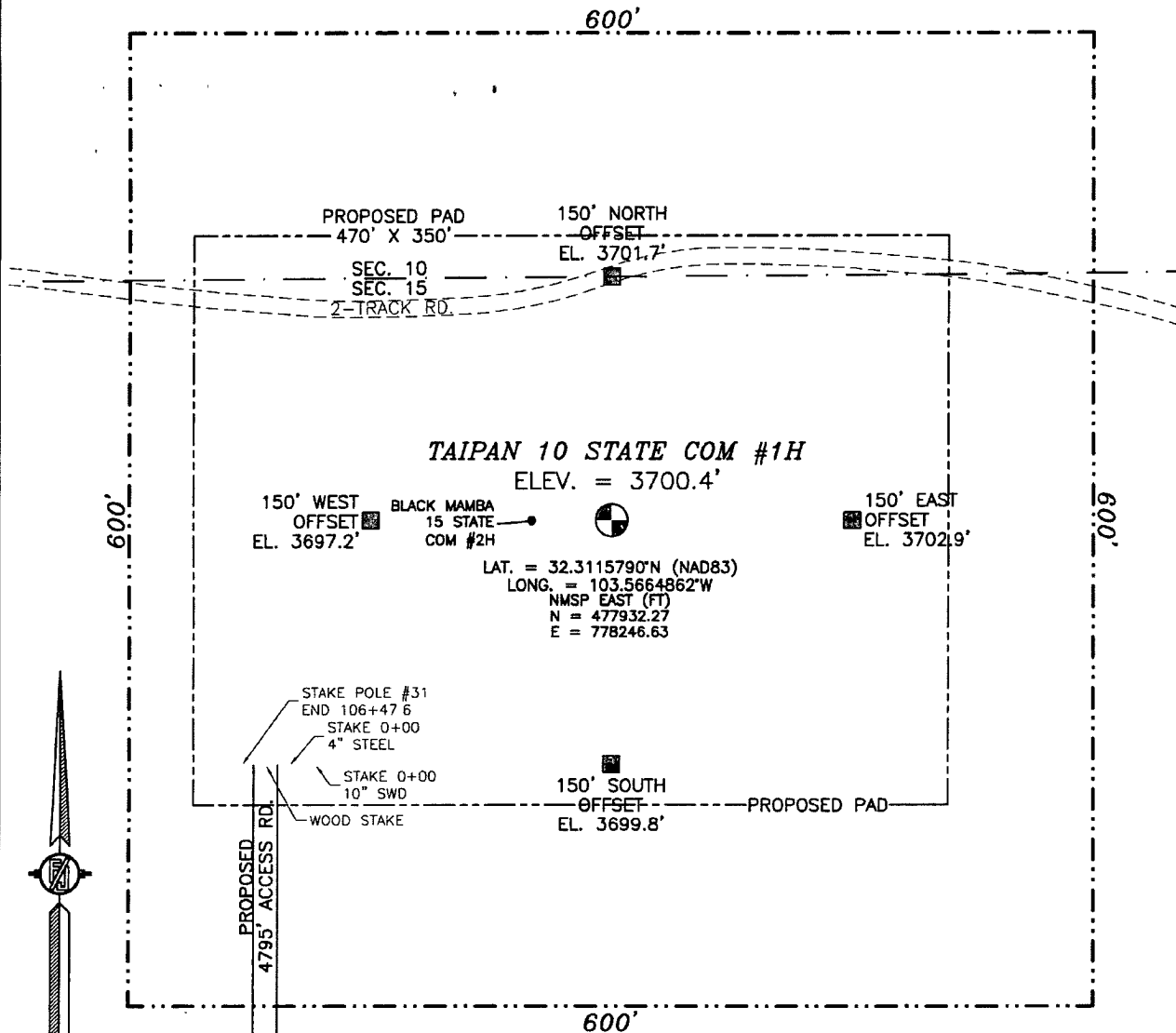
¹² Dedicated Acres 200 160	¹³ Joint or Infill	¹⁴ Consolidation Code	¹⁵ Order No.
---	-------------------------------	----------------------------------	-------------------------

No allowable will be assigned to this completion until all interests have been consolidated or a non-standard unit has been approved by the division.

<p>NW CORNER SEC. 10 LAT. = 32 3265057"N LONG. = 103.5687963"W NMSP EAST (FT) N = 483357.53 E = 777494.17</p> <p>COMPUTED</p> <p>SEC. CORNER LAT. = 32 3119919"N LONG. = 103.5687843"W NMSP EAST (FT) N = 478077.43 E = 777535.58</p> <p>W Q CORNER SEC. 15 LAT. = 32 3047319"N LONG. = 103.5687767"W NMSP EAST (FT) N = 475436.25 E = 777556.76</p> <p>SW CORNER SEC. 15 LAT. = 32 2974665"N LONG. = 103.5688344"W NMSP EAST (FT) N = 472792.98 E = 777557.76</p>		<p>DESTROYED</p> <p>BOTTOM OF HOLE LAT. = 32.3255989"N LONG. = 103.5677275"W NMSP EAST (FT) N = 483029.97 E = 777826.69</p> <p>1/4 CORNER LAT. = 32 3119892"N LONG. = 103 5602426"W NMSP EAST (FT) N = 478095.37 E = 780174.48</p> <p>S Q CORNER SEC. 15 LAT. = 32 2974647"N LONG. = 103.5602205"W NMSP EAST (FT) N = 472811.39 E = 780219.44</p>		<p>NE CORNER SEC. 10 LAT. = 32.3265050"N LONG. = 103.5516842"W NMSP EAST (FT) N = 483395.41 E = 782780.05</p> <p>E Q CORNER SEC. 10 LAT. = 32.3192397"N LONG. = 103.5516795"W NMSP EAST (FT) N = 480752.27 E = 782800.78</p> <p>SEC CORNER LAT. = 32 3119976"N LONG. = 103.5516853"W NMSP EAST (FT) N = 478117.59 E = 782818.20</p> <p>SE CORNER SEC. 15 LAT. = 32.2974530"N LONG. = 103.5516743"W NMSP EAST (FT) N = 472826.29 E = 782860.18</p>		<p>17 OPERATOR CERTIFICATION</p> <p>I hereby certify that the information contained herein is true and complete to the best of my knowledge and belief, and that this organization either owns a working interest or unleased mineral interest in the land including the proposed bottom hole location or has a right to drill this well at this location pursuant to a contract with an owner of such a mineral or working interest, or to a voluntary pooling agreement or a compulsory pooling order heretofore entered by the division.</p> <p>Signature <u>David H. Cook</u> Date <u>9/6/2012</u></p> <p>Printed Name <u>David H. Cook</u> Regulatory Specialist</p> <p>E-mail Address <u>david.cook@dvn.com</u></p>
<p>TAIPAN 10 STATE COM #1H ELEV. = 3700.4' LAT. = 32.3115790"N (NAD83) LONG. = 103.5664862"W NMSP EAST (FT) N = 477932.27 E = 778246.63</p>		<p>COMPUTED</p>		<p>18 SURVEYOR CERTIFICATION</p> <p>I hereby certify that the well location shown on this plat was plotted from field notes of actual surveys made by me or under my supervision, and that the same is true and correct to the best of my belief.</p> <p>Date of Survey <u>AUGUST 8, 2012</u></p> <p>Signature and Seal of Professional Surveyor <u>[Signature]</u></p> <p>Certificate Number <u>FILED IN THE JARAMILLO, PLS 12797</u></p> <p>SURVEY NO. <u>1219</u></p>		

SEP 10 2012

SECTION 15, TOWNSHIP 23 SOUTH, RANGE 33 EAST, N.M.P.M.
LEA COUNTY, STATE OF NEW MEXICO



010 50 100 200

SCALE 1" = 100'
DIRECTIONS TO LOCATION

FROM MM 31 ON JAL HWY 128 GO SOUTH 0.8 MI. TO CR #21 (DELAWARE BASIN) TAKE LEFT (NORTH) ON CR #21 8.0 MI. TO A PRIVATE CALICHE LEASE RD. ON LEFT (WEST) (THIS ROAD HAS A LOCKED GATE ABOUT 600FT. IN FROM CR #21 NEED COMBO) GO 2.4 MILES TO RD. INT. TAKE RIGHT (NORTH) GO 0.95 MILES TO A BLOCKED 2-TRACK RD ON LEFT (WEST) GO WEST 0.9 MILES SITE ON LEFT (SOUTH).

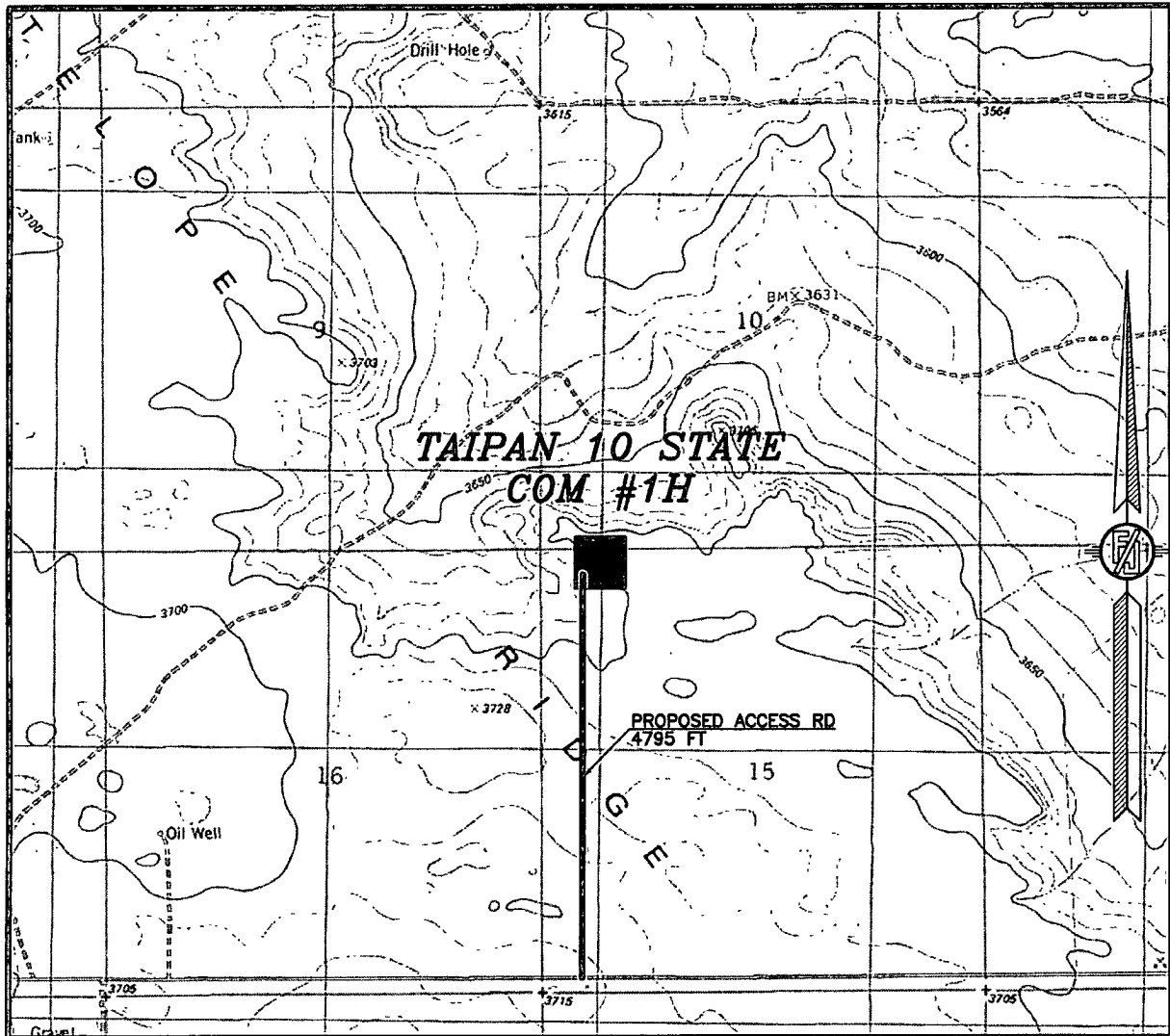
DEVON ENERGY PRODUCTION COMPANY, L.P.
TAIPAN 10 STATE COM #1H
LOCATED 150 FT. FROM THE NORTH LINE
AND 710 FT. FROM THE WEST LINE OF
SECTION 15, TOWNSHIP 23 SOUTH,
RANGE 33 EAST, N.M.P.M.
LEA COUNTY, STATE OF NEW MEXICO

AUGUST 8, 2012

SURVEY NO. 1219

MADRON SURVEYING, INC. 301 SOUTH CANAL (575) 234-3341 CARLSBAD, NEW MEXICO

SECTION 15, TOWNSHIP 23 SOUTH, RANGE 33 EAST, N.M.P.M.
LEA COUNTY, STATE OF NEW MEXICO
LOCATION VERIFICATION MAP



USGS QUAD MAP:
TIP TOP WELLS

NOT TO SCALE

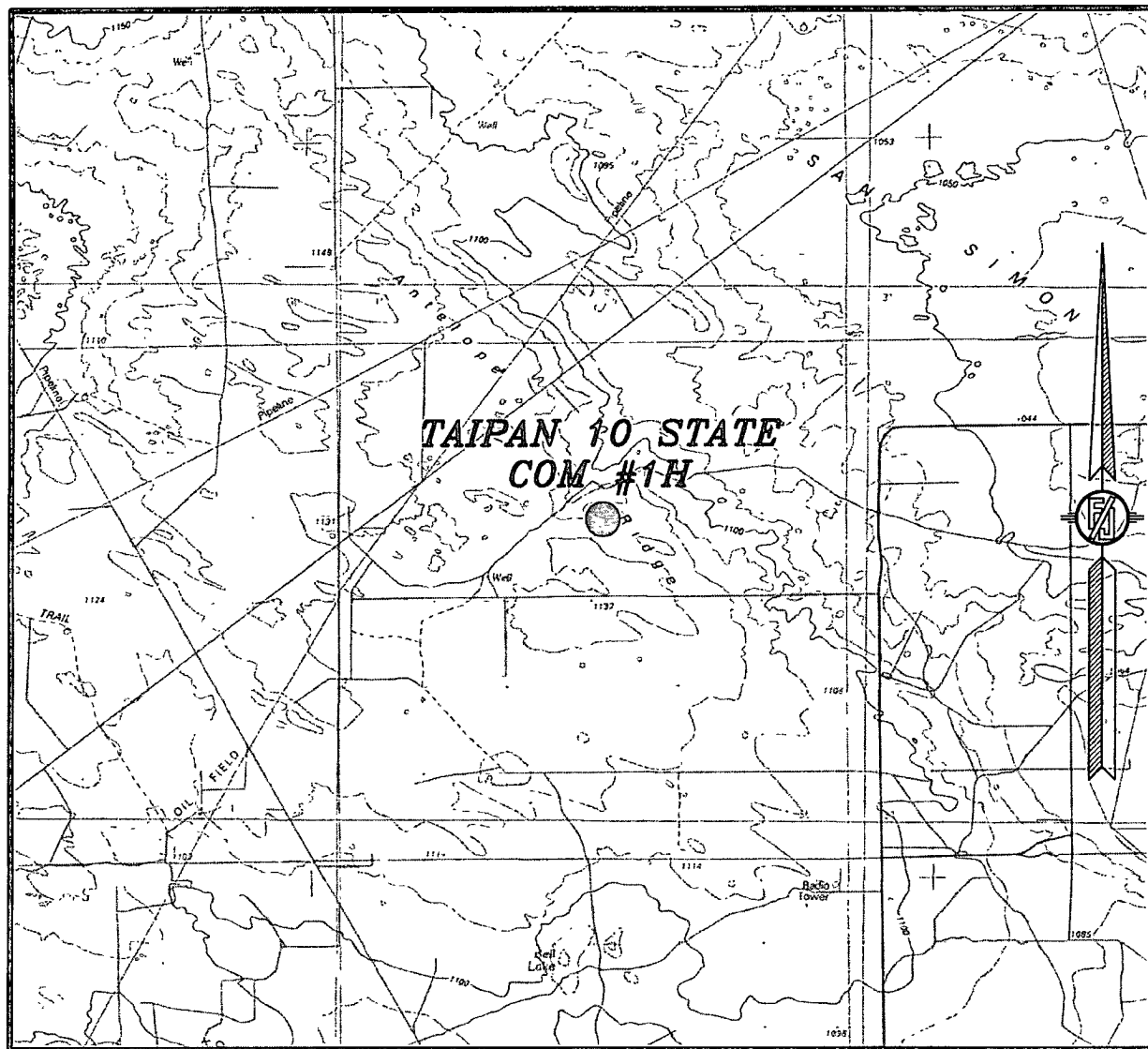
DEVON ENERGY PRODUCTION COMPANY, L.P.
TAIPAN 10 STATE COM #1H
LOCATED 150 FT. FROM THE NORTH LINE
AND 710 FT. FROM THE WEST LINE OF
SECTION 15, TOWNSHIP 23 SOUTH,
RANGE 33 EAST, N.M.P.M.
LEA COUNTY, STATE OF NEW MEXICO

AUGUST 8, 2012

SURVEY NO. 1219

MADRON SURVEYING, INC. 301 SOUTH CANAL (575) 234-3341 CARLSBAD, NEW MEXICO

SECTION 15, TOWNSHIP 23 SOUTH, RANGE 33 EAST, N.M.P.M.
LEA COUNTY, STATE OF NEW MEXICO
VICINITY MAP



NOT TO SCALE

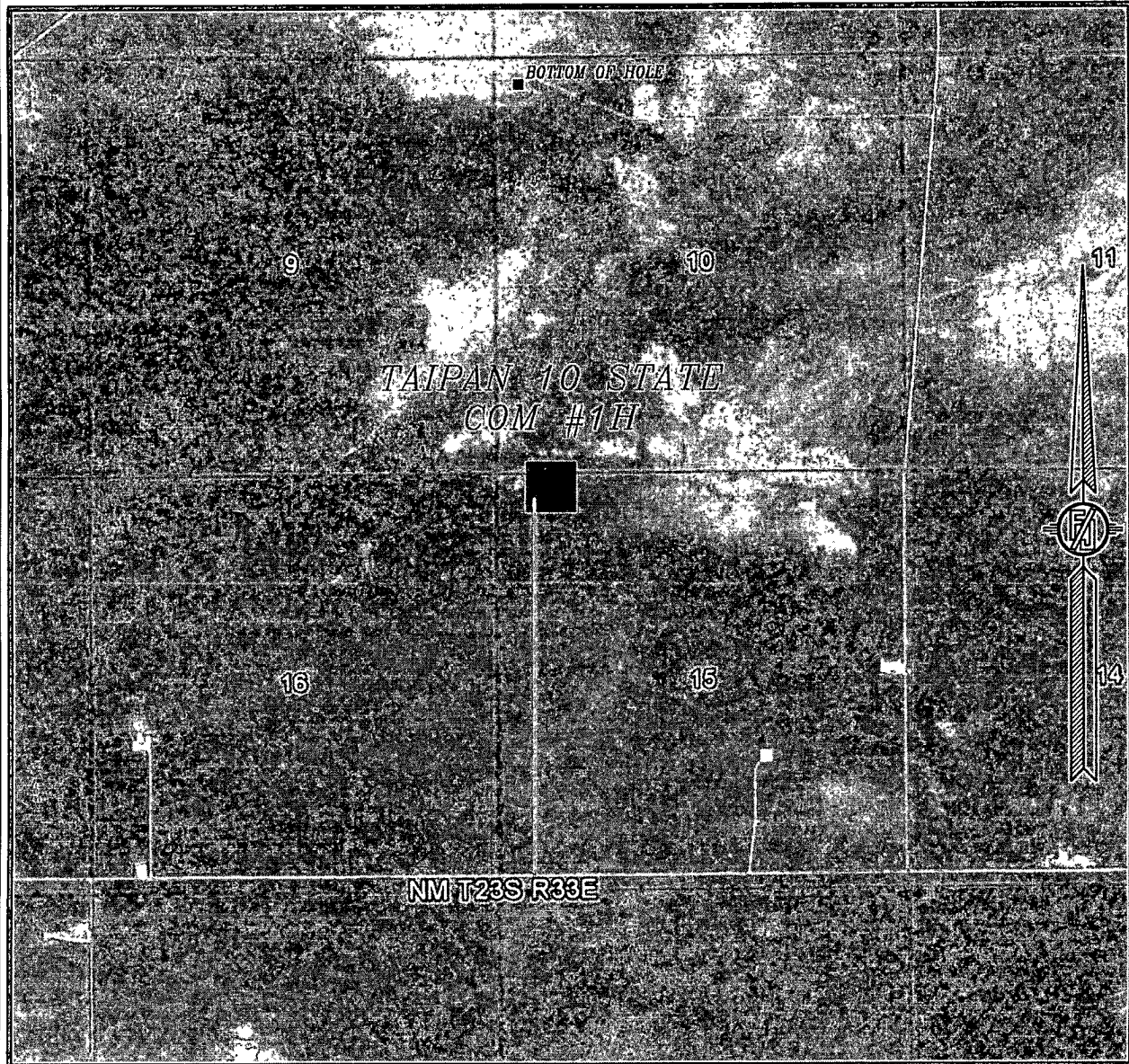
DEVON ENERGY PRODUCTION COMPANY, L.P.
TAIPAN 10 STATE COM #1H
LOCATED 150 FT. FROM THE NORTH LINE
AND 710 FT. FROM THE WEST LINE OF
SECTION 15, TOWNSHIP 23 SOUTH,
RANGE 33 EAST, N.M.P.M.
LEA COUNTY, STATE OF NEW MEXICO

AUGUST 8, 2012

SURVEY NO. 1219

MADRON SURVEYING, INC. 301 SOUTH CANAL (575) 234-3341 CARLSBAD, NEW MEXICO

SECTION 15, TOWNSHIP 23 SOUTH, RANGE 33 EAST, N.M.P.M.
LEA COUNTY, STATE OF NEW MEXICO
AERIAL PHOTO



NOT TO SCALE
AERIAL PHOTO:
GOOGLE EARTH
MARCH 2012

DEVON ENERGY PRODUCTION COMPANY, L.P.

TAIPAN 10 STATE COM #1H

LOCATED 150 FT. FROM THE NORTH LINE
AND 710 FT. FROM THE WEST LINE OF
SECTION 15, TOWNSHIP 23 SOUTH,
RANGE 33 EAST, N.M.P.M.
LEA COUNTY, STATE OF NEW MEXICO

AUGUST 8, 2012

SURVEY NO. 1219

MADRON SURVEYING, INC. 301 SOUTH CANAL (575) 234-3341 CARLSBAD, NEW MEXICO