

**NEW MEXICO OIL CONSERVATION COMMISSION
WELL LOCATION AND ACREAGE DEDICATION PLAT**

Form C-102
Supersedes C-128
Effective 1-1-65

All distances must be from the outer boundaries of the Section

Operator V-F Petroleum Inc.			Lease Hightower		Well No. 1
Tract Letter A	Section 4	Township 17 South	Range 37 East	County Lea	
Actual Footage Location of Well: 571 feet from the North line and 554 feet from the East line					
Ground Level Elev 3778.5	Producing Formation Drinkard		Pool Knowles Drinkard w	Dedicated Acreage: 80 Acres	

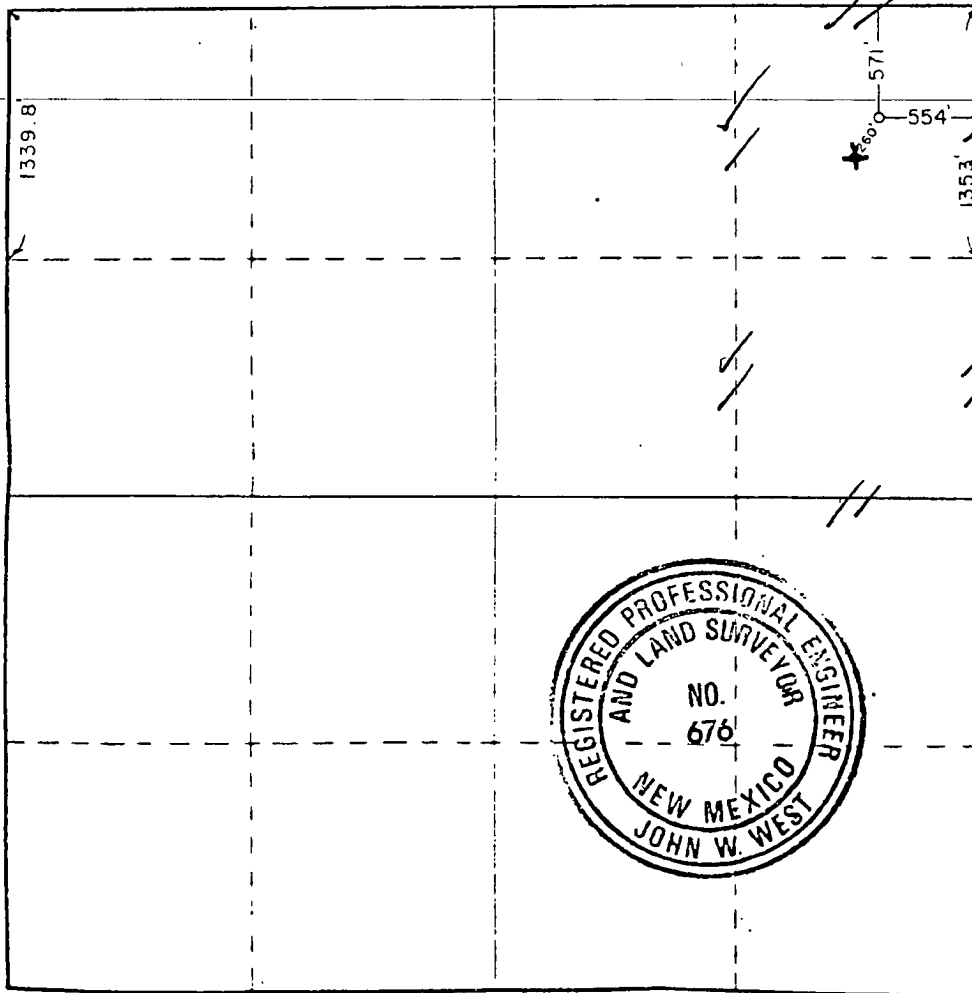
1. Outline the acreage dedicated to the subject well by colored pencil, or hatchure marks on the plat below.
2. If more than one lease is dedicated to the well, outline each and identify the ownership thereof (both as to working interest and royalty)
3. If more than one lease of different ownership is dedicated to the well, have the interests of all owners been consolidated by communitization, unitization, force-pooling, etc?

☐ Yes ☐ No If answer is "yes," type of consolidation _____

If answer is "no," list the owners and tract descriptions which have actually been consolidated (Use reverse side of this form if necessary) _____

No allowable will be assigned to the well until all interests have been consolidated (by communitization, unitization, forced-pooling, or otherwise) or until a non-standard unit, eliminating such interests, has been approved by the Commission.

Per MWL



CERTIFICATION

I hereby certify that the information contained herein is true and complete, to the best of my knowledge and belief.

M.W. Luna
M.W. Luna

Name
Production Superintendent

Position
V-F Petroleum Inc.

Company
3/7/12

Date

I hereby certify that the well location shown on this plat was plotted from field notes of actual surveys made by me or under my supervision, and that the same is true and correct to the best of my knowledge and belief.

Date Surveyed

February 12, 1988

Registered Professional Engineer and/or Land Surveyor

John W. West

Certificate No **JOHN W. WEST, 676**
RONALD J. EIDSON, 3239

9b560

SEP 11 2012