

30-025-40765

H<sub>2</sub>S Contingency Plan

Double X 25 Federal No. 54

Cimarex Energy Co.

Unit B, Section 25

T24S-R32E, Lea County, NM

HOBBS OCD

SEP 20 2012

RECEIVED

Emergency Procedures

In the event of a release of gas containing H<sub>2</sub>S, the first responder(s) must:

- ★ Isolate the area and prevent entry by other persons into the 100 ppm ROE.
- ★ Evacuate any public places encompassed by the 100 ppm ROE.
- ★ Be equipped with H<sub>2</sub>S monitors and air packs in order to control the release.
- ★ Use the "buddy system" to ensure no injuries occur during the response.
- ★ Take precautions to avoid personal injury during this operation.
- ★ Contact operator and/or local officials to aid in operation. See list of phone numbers attached.
- ★ Have received training in the:
  - ♦ Detection of H<sub>2</sub>S, and
  - ♦ Measures for protection against the gas,
  - ♦ Equipment used for protection and emergency response.

Ignition of Gas Source

Should control of the well be considered lost and ignition considered, take care to protect against exposure to Sulfur Dioxide (SO<sub>2</sub>). Intentional ignition must be coordinated with the NMOCD and local officials. Additionally, the NM State Police may become involved. NM State Police shall be the Incident Command on scene of any major release. Take care to protect downwind whenever there is an ignition of the gas.

Characteristics of H<sub>2</sub>S and SO<sub>2</sub>

Common Name	Chemical Formula	Specific Gravity	Threshold Limit	Hazardous Limit	Lethal Concentration
Hydrogen Sulfide	H <sub>2</sub> S	1.189 Air=1	10 ppm	100 ppm/hr	600 ppm
Sulfur Dioxide	SO <sub>2</sub>	2.21 Air=1	2 ppm	N/A	1000 ppm

Contacting Authorities

Stata Production Company's personnel must liaise with local and state agencies to ensure a proper response to a major release. Additionally, the OCD must be notified of the release as soon as possible but no later than 4 hours. Agencies will ask for information such as type and volume of release, wind direction, location of release, etc. Be prepared with all information available including directions to site. The following call list of essential and potential responders has been prepared for use during a release. Stata Production Company's response must be in coordination with the State of New Mexico's "Hazardous Materials Emergency Response Plan" (HMER).

### H<sub>2</sub>S Contingency Plan Emergency Contacts

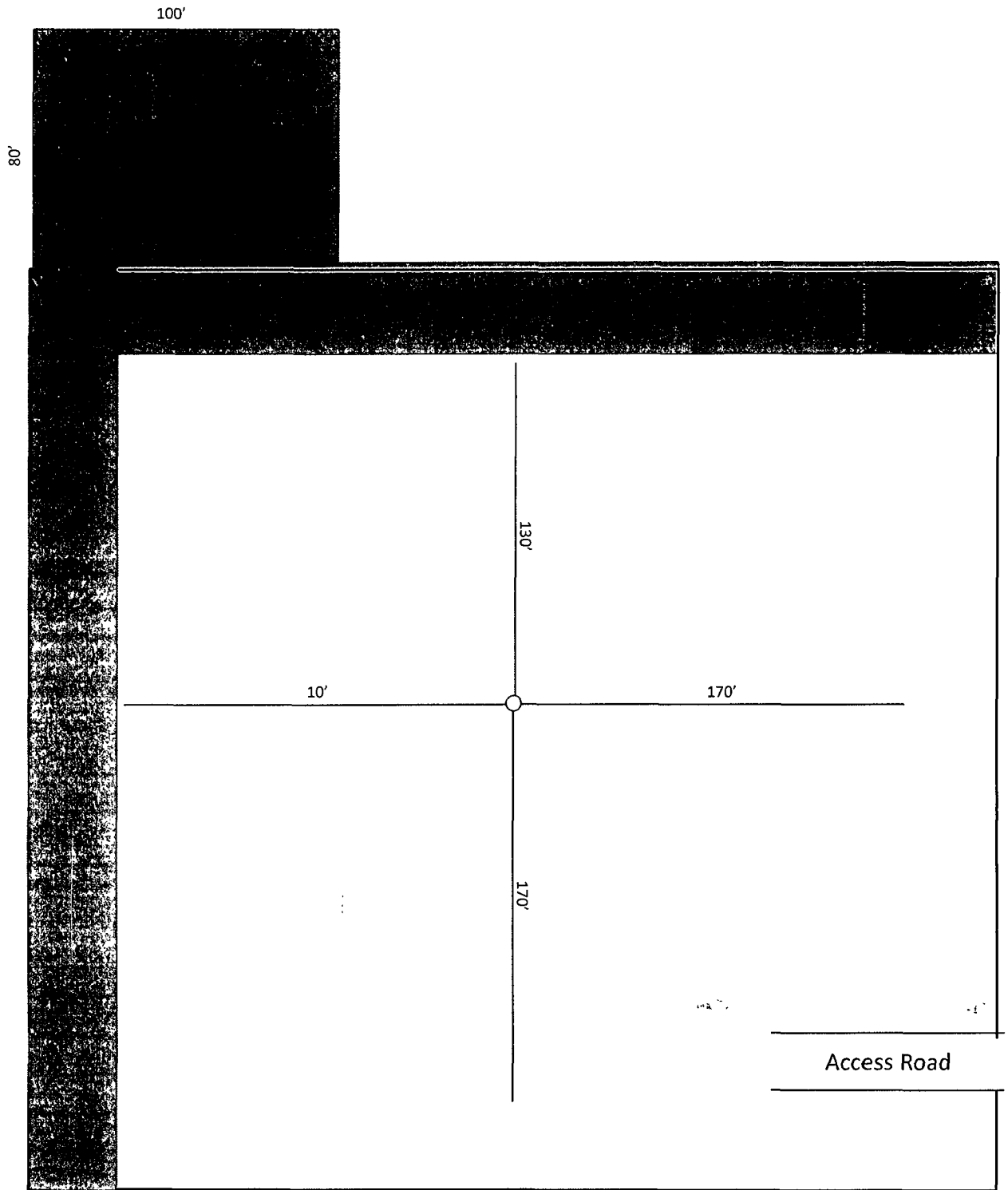
#### **Double X 25 Federal No. 5**

Cimarex Energy Co.

Unit B, Section 25

T24S-R32E, Lea County, NM

<b>Company Personnel</b>	<b>Office</b>	<b>Mobile</b>
Larry Seigrist, Drilling Manager	432-620-1934	580-243-8285
Scott Lucas		432-894-5572
Roy Shirley		432-634-2136
<b>Sheriff's Departments</b>		
Eddy County	575-887-1888	
Lea County	575-396-3611	
<b>New Mexico State Police</b>	<b>575-392-5588</b>	
<b>Fire Departments</b>		
	<b>911</b>	
Carlsbad	575-885-3125	
Eunice	575-394-2111	
Hobbs	575-397-9308	
Jal	575-395-2221	
Lovington	575-396-2359	
<b>Hospitals</b>		
	<b>911</b>	
Carlsbad Medical Emergency	575-887-4100	
Eunice Medical Emergency	575-394-2112	
Hobbs Medical Emergency	575-397-9308	
Jal Medical Emergency	575-395-2221	
Lovington Medical Emergency	575-396-2359	
<b>Agent Notifications</b>		
Bureau of Land Management	575-393-3612	
New Mexico Oil Conservation Division	575-393-6161	
Mosaic Potash - Carlsbad	575-887-2871	



**Exhibit "D-1"**  
**Interim Reclamation Plat**  
**Double X 25 Federal 5**  
Cimarex Energy Co.  
25-24S-32E  
SHL 430' FNL & 2065' FEL  
BHL 330' FSL & 2310' FEL  
Lea County, NM

