

DISTRICT I
1635 N. French Dr., Hobbs, NM 88240
Phone (505) 833-6181 Fax: (505) 833-0720

DISTRICT II
811 S. First St., Artesia, NM 88210
Phone (505) 749-1233 Fax: (505) 749-0720

DISTRICT III
1000 Rio Brazos Rd., Aztec, NM 87410
Phone (505) 334-6178 Fax: (505) 334-6170

DISTRICT IV
1220 S. St. Francis Dr., Santa Fe, NM 87505
Phone (505) 476-2450 Fax: (505) 476-2452

State of New Mexico
Energy, Minerals and Natural Resources Department

Form C-102
Revised August 1, 2011

Submit one copy to appropriate
District Office

OIL CONSERVATION DIVISION

1220 South St. Francis Dr.
Santa Fe, New Mexico 87505

WELL LOCATION AND ACREAGE DEDICATION PLAT

☐ AMENDED REPORT

API Number 30-025-40785	Pool Code 22900	Eunice; Blinberry - Tubb Drinkard - North
Property Code 22503	Property Name NORTHEAST DRINKARD UNIT	Well Number 353
OGRID No. 873	Operator Name APACHE CORPORATION	Elevation 3425'

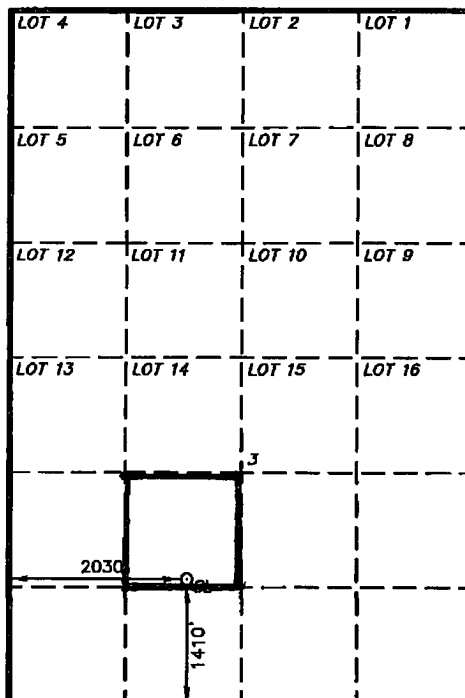
Surface Location

UL or lot No.	Section	Township	Range	Lot Idn	Feet from the	North/South line	Feet from the	East/West line	County
K	3	21 S	37 E		1410	SOUTH	2030	WEST	LEA

Bottom Hole Location If Different From Surface

UL or lot No.	Section	Township	Range	Lot Idn	Feet from the	North/South line	Feet from the	East/West line	County
40									
Dedicated Acres		Joint or Infill		Consolidation Code		Order No.			

NO ALLOWABLE WILL BE ASSIGNED TO THIS COMPLETION UNTIL ALL INTERESTS HAVE BEEN CONSOLIDATED
OR A NON-STANDARD UNIT HAS BEEN APPROVED BY THE DIVISION



SURFACE LOCATION
Lat - N 32°30'16.51"
Long - W 103°09'10.43"
NMSPCE- N 549314.138
E 805251.232
(NAD-83)
Lat - N 32°30'16.08"
Long - W 103°09'08.74"
NMSPCE- N 549254.160
E 864087.330
(NAD-27)

OPERATOR CERTIFICATION

I hereby certify that the information contained herein is true and complete to the best of my knowledge and belief, and that this organization either owns a working interest or undivided mineral interest in the land including the proposed bottom hole location or has a right to drill this well at this location pursuant to a contract with an owner of such a mineral or working interest, or to a voluntary pooling agreement or a compulsory pooling order heretofore entered by the Division.

Vicki Brown 9/24/12
Signature Date
Vicki Brown
Printed Name
vicki.brown@apachecorp.com
Email Address

SURVEYOR CERTIFICATION

I hereby certify that the well location shown on this plat was plotted from field notes of actual surveys made by me or under my supervision and that the same is true and correct to the best of my belief.

SEPTEMBER 24, 2012
Date Surveyed
Signature of Professional Surveyor
7977
Certificate No. Gary L. Jones 7977

BASIN SURVEYS 27311

SEP 26 2012

**SECTION 3, TOWNSHIP 21 SOUTH, RANGE 37 EAST, N.M.P.M.,
LEA COUNTY, NEW MEXICO.**

**APACHE CORPORATION
NORTHEAST DRINKARD UNIT #353
ELEV. - 3426'**

Lat - N 32°30'16.51"
Long - W 103°09'10.43"
NMSPCE- N 549314.138
E 905251.232
(NAD-83)
Lat - N 32°30'16.08"
Long - W 103°09'08.74"
NMSPCE- N 549254.160
E 884067.330
(NAD-27)

150' WEST
OFF SET □
3427.6'

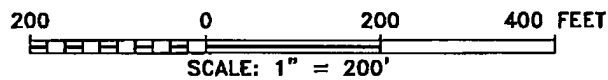
150' NORTH
OFF SET
3426.3' □

150' EAST
OFF SET □
3424.5'

150' SOUTH
OFF SET
3425.0' □

PIPELINE

LEASE ROAD



Directions to Location:

FROM CATTLE GUARD 17 ON HWY 207, GO
NORTHWEST 0.2 MILES TO PROPOSED WELL PAD.

APACHE CORPORATION

REF: NORTHEAST DRINKARD UNIT #353 / WELL PAD TOPO

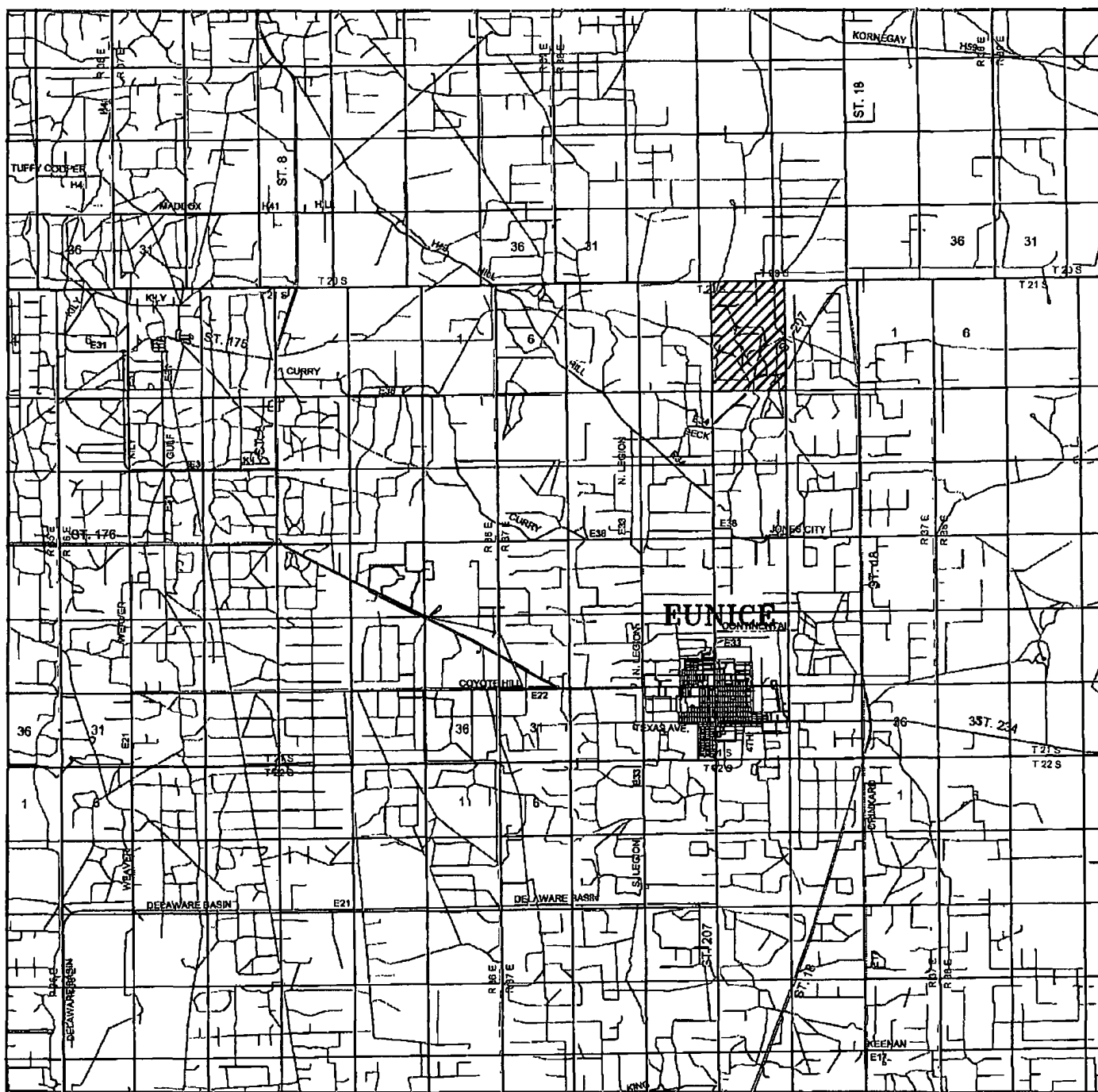
THE NORTHEAST DRINKARD UNIT #353 LOCATED 1410'
FROM THE SOUTH LINE AND 2030' FROM THE WEST LINE OF
SECTION 3, TOWNSHIP 21 SOUTH, RANGE 37 EAST,
N.M.P.M., LEA COUNTY, NEW MEXICO.

BASIN SURVEYS P.O. BOX 1786-HOBBS, NEW MEXICO

W.O. Number: 27311 Drawn By: J. SMALL

Date: 09-14-2012 Disk: JMS 27311

Survey Date: 09-11-2012 Sheet 1 of 1 Sheets



NORTHEAST DRINKARD UNIT #353
 Located 1410' FSL and 2030' FWL
 Section 3, Township 21 South, Range 37 East,
 N.M.P.M., Lea County, New Mexico.



P.O. Box 1788
 1120 N. West County Rd.
 Hobbs, New Mexico 88241
 (575) 393-7316 - Office
 (575) 392-2206 - Fax
basinsurveys.com

W.O. Number: JMS 27311

Survey Date: 09-11-2012

Scale: 1" = 2 Miles

Date: 09-14-2012

**APACHE
 CORPORATION**