

DISTRICT I  
1625 N. French Dr., Hobbs, NM 88240  
Phone (505) 833-0161 Fax (505) 833-0720

DISTRICT II  
811 S. First St., Artesia, NM 88210  
Phone (505) 746-1223 Fax (505) 746-0722

DISTRICT III  
1000 Rio Brazos Rd., Aztec, NM 87410  
Phone (505) 834-0170 Fax (505) 834-0170

DISTRICT IV  
1260 S. St. Francis Dr., Santa Fe, NM 87505  
Phone (505) 476-3460 Fax (505) 476-3460

HOBBS OGD

SEP 24 2012

RECEIVED

State of New Mexico  
Energy, Minerals and Natural Resources Department

Form C-102  
Revised August 1, 2011

Submit one copy to appropriate  
District Office

OIL CONSERVATION DIVISION

1220 South St. Francis Dr.  
Santa Fe, New Mexico 87505

WELL LOCATION AND ACREAGE DEDICATION PLAT

☐ AMENDED REPORT

API Number <b>30-025-40787</b>	Pool Code <b>22900</b>	Property Name <b>Eunice Blinney - Tobbs Drinkard North</b>
Property Code <b>22503</b>	Property Name <b>NORTHEAST DRINKARD UNIT</b>	
OGRD No. <b>873</b>	Operator Name <b>APACHE CORPORATION</b>	
		Well Number <b>366</b>
		Elevation <b>3466'</b>

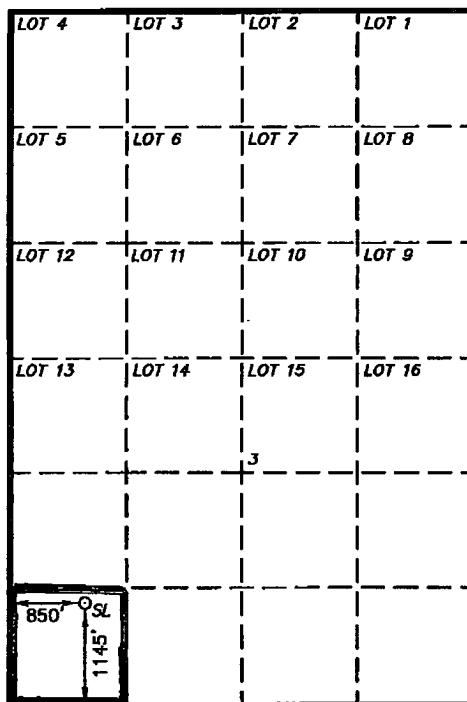
Surface Location

UL or lot No.	Section	Township	Range	Lot Idn	Feet from the	North/South line	Feet from the	East/West line	County
M	3	21 S	37 E		1145	SOUTH	850	WEST	LEA

Bottom Hole Location If Different From Surface

UL or lot No.	Section	Township	Range	Lot Idn	Feet from the	North/South line	Feet from the	East/West line	County
Dedicated Acres <b>40</b>	Joint or Infill	Consolidation Code	Order No.						

NO ALLOWABLE WILL BE ASSIGNED TO THIS COMPLETION UNTIL ALL INTERESTS HAVE BEEN CONSOLIDATED  
OR A NON-STANDARD UNIT HAS BEEN APPROVED BY THE DIVISION



**SURFACE LOCATION**  
Lat - N 32°30'13.88"  
Long - W 103°09'24.21"  
NMSPCE- N 549034.700  
E 904074.447  
(NAD-83)  
Lat - N 32°30'13.44"  
Long - W 103°09'22.51"  
NMSPCE- N 548974.646  
E 862890.521  
(NAD-27)

OPERATOR CERTIFICATION

I hereby certify that the information contained herein is true and complete to the best of my knowledge and belief, and that this organization either owns a working interest or unleased mineral interest in the land including the proposed bottom hole location or has a right to drill this well at this location pursuant to a contract with an owner of such a mineral or working interest, or to a voluntary pooling agreement or a compulsory pooling order heretofore entered by the division.

**Vicki Brown** 9/24/12  
Signature Date  
**Vicki Brown**  
Printed Name  
**Vicki.brown@apachecorp.com**  
Email Address

SURVEYOR CERTIFICATION

I hereby certify that the well location shown on this plat was plotted from field notes of actual surveys made by me or under my supervision and that the same is true and correct to the best of my belief.

SEPTEMBER 24 2012  
Date Surveyed  
Signature of Professional Surveyor  
Professional Surveyor  
7977  
Certificate No. **27313** Jones 7977  
BASIN SURVEYS 27313

SEP 26 2012

**SECTION 3, TOWNSHIP 21 SOUTH, RANGE 37 EAST, N.M.P.M.,  
LEA COUNTY, NEW MEXICO.**

**APACHE CORPORATION  
NORTHEAST DRINKARD UNIT #366  
ELEV. - 3466'**

Lat - N 32°30'13.88"  
Long - W 103°09'24.21"  
NMSPEC- N 549034.700  
E 904074.447  
(NAD-83)  
Lat - N 32°30'13.44"  
Long - W 103°09'22.51"  
NMSPEC- N 548974.646  
E 862890.521  
(NAD-27)

150' WEST  
OFF SET □  
3466.1'

150' EAST  
□ OFF SET  
3464.7'

150' NORTH  
OFF SET  
3465.3'  
□

150' SOUTH  
OFF SET  
3466.6'

LIVINGSTON 17

200 0 200 400 FEET  
SCALE: 1" = 200'

**Directions to Location:**

FROM CATTLE GUARD 17 ON HWY 207, GO  
NORTHWEST 0.1 MILES TO EXISTING LEASE ROAD, GO  
WEST 0.3 MILES TO LIVINGSTON 17 AND PROPOSED  
WELL PAD.

**BASIN SURVEYS** P.O. BOX 1786-HOBBS, NEW MEXICO

W.O. Number: 27313 Drawn By: J. SMALL

Date: 09-14-2012 Disk: JMS 27313

**APACHE CORPORATION**

REF: NORTHEAST DRINKARD UNIT #366 / WELL PAD TOPO

THE NORTHEAST DRINKARD UNIT #366 LOCATED 1145'

FROM THE SOUTH LINE AND 850' FROM THE WEST LINE OF

SECTION 3, TOWNSHIP 21 SOUTH, RANGE 37 EAST,

N.M.P.M., LEA COUNTY, NEW MEXICO.

Survey Date: 09-11-2012 Sheet 1 of 1 Sheets

