

DISTRICT I
1625 N. French Dr., Hobbs, NM 88240
Phone: (575) 393-6161 Fax: (575) 393-0720

DISTRICT II
811 S First St., Artesia, NM 88210
Phone: (575) 748-1283 Fax: (575) 748-9720

DISTRICT III
1000 Rio Brazos Road, Aztec, NM 87410
Phone: (505) 334-6178 Fax: (505) 334-6170

DISTRICT IV
1220 S St. Francis Dr., Santa Fe, NM 87505
Phone: (505) 476-3460 Fax: (505) 476-3462

State of New Mexico
Energy, Minerals & Natural Resources Department
OIL CONSERVATION DIVISION
1220 South St. Francis Dr.
Santa Fe, New Mexico 87505

HOBBS OCD

SEP 21 2012

RECEIVED

Form C-102

Revised August 1, 2011

Submit one copy to appropriate
District Office

☐ AMENDED REPORT

WELL LOCATION AND ACREAGE DEDICATION PLAT

API Number 30-025-40778	Pool Code 97983	Pool Name Wildcat; Bone Spring
Property Code 39461	Property Name PRICKLY PEAR 6 FEDERAL	
OGRID No. 229137	Operator Name COG OPERATING, LLC	Well Number 4H
		Elevation 3697'

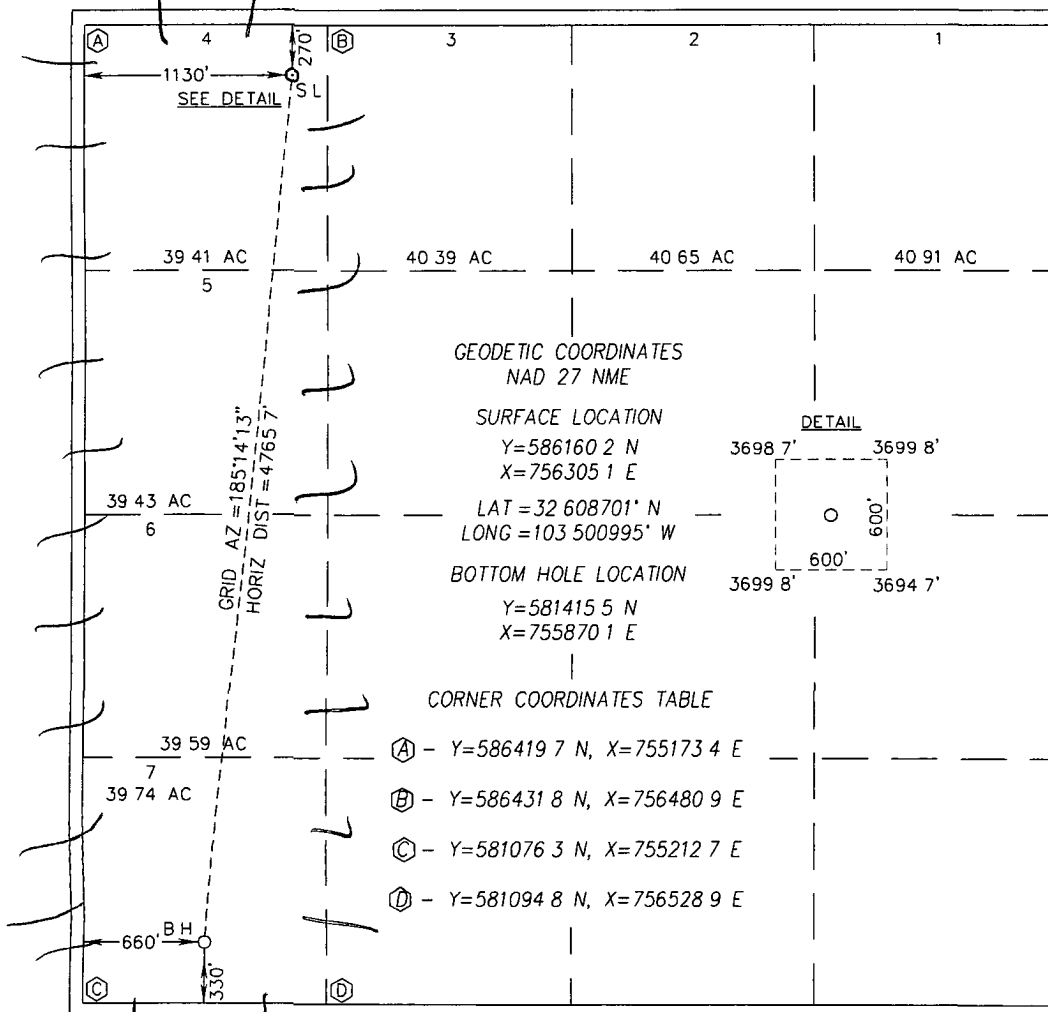
Surface Location

UL or lot No	Section	Township	Range	Lot Idn	Feet from the	North/South line	Feet from the	East/West line	County
4	6	20-S	35-E		270	NORTH	1130	WEST	LEA

Bottom Hole Location If Different From Surface

UL or lot No	Section	Township	Range	Lot Idn	Feet from the	North/South line	Feet from the	East/West line	County
7	6	20-S	35-E		330	SOUTH	660	WEST	LEA
Dedicated Acres 158.17		Joint or Infill		Consolidation Code		Order No.			

NO ALLOWABLE WILL BE ASSIGNED TO THIS COMPLETION UNTIL ALL INTERESTS HAVE BEEN CONSOLIDATED OR A NON-STANDARD UNIT HAS BEEN APPROVED BY THE DIVISION



OPERATOR CERTIFICATION

I hereby certify that the information herein is true and complete to the best of my knowledge and belief, and that this organization either owns a working interest or unleased mineral interest in the land including the proposed bottom hole location or has a right to drill this well at this location pursuant to a contract with an owner of such mineral or working interest, or to a voluntary pooling agreement or a compulsory pooling order heretofore entered by the division

Melanie J. Parker 8/13/12
Signature Date
Melanie J. Parker
Printed Name
m.parker@concho.com
E-mail Address

SURVEYOR CERTIFICATION

I hereby certify that the well location shown on this plat was plotted from field notes of actual surveys made by me or under my supervision, and that the same is true and correct to the best of my belief

MAY 3, 2012

Date of Survey
Signature & Seal of Professional Surveyor:

Certificate Number Gary G. Eidson 12641
Ronald J. Eidson 3239
AP JWSC W O 12.11.0784

SEP 26 2012