

DISTRICT I  
1620 N. FRENCH DR., HOBBES, NM 87024

State of New Mexico  
Energy, Minerals and Natural Resources Department

Form C-102

DISTRICT II  
1901 W. GRAND AVENUE, ARTESIA, NM 88210

OIL CONSERVATION DIVISION

Revised October 12, 2010  
Submit to Appropriate District Office  
State Lease - 4 Copies  
Fee Lease - 3 Copies

DISTRICT III  
1000 RIO BRAZOS RD., AZTEC, NM 87410

11885 SOUTH ST. FRANCIS DR.  
Santa Fe, New Mexico 87505

DISTRICT IV  
11000 S. ST. FRANCIS DR., SANTA FE, NM 87505

WELL LOCATION AND ACREAGE DEDICATION PLAT

☐ AMENDED REPORT

API Number <b>30225-40794</b>	Pool Code <b>96403-5535</b>	Pool Name <b>Berry Wildcat, Bone Spring North</b>
Property Code <b>39446</b>	Property Name <b>BEN LILLY 2 STATE</b>	Well Number <b>2H</b>
OGRID No. <b>229137</b>	Operator Name <b>COG OPERATING, LLC</b>	Elevation <b>3807.9'</b>

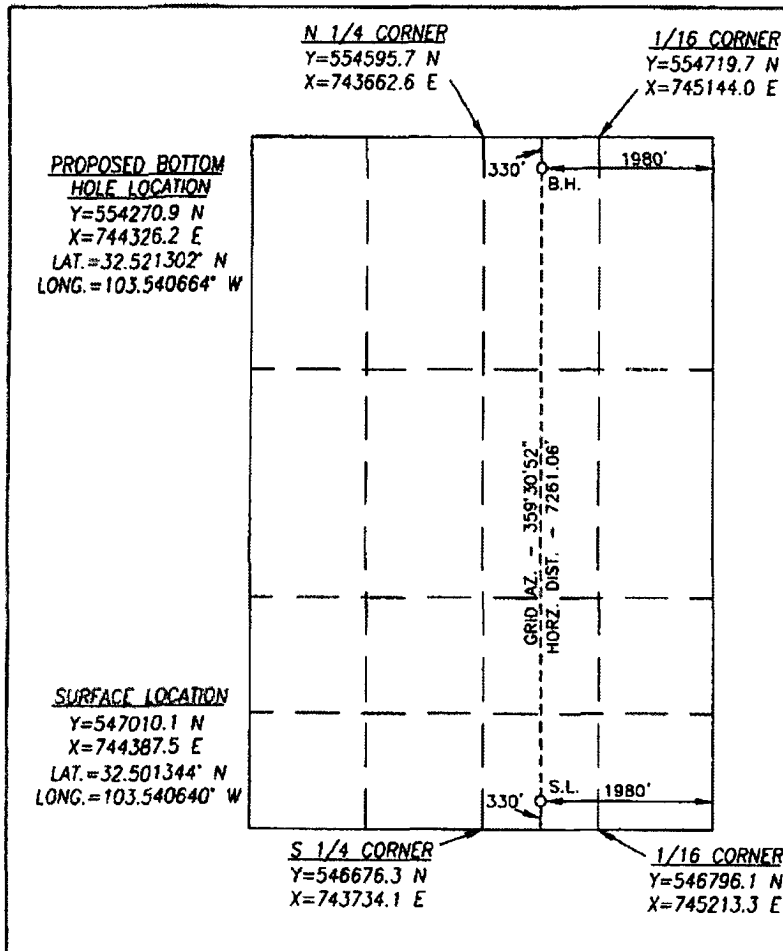
Surface Location

UL or lot No.	Section	Township	Range	Lot Idn	Feet from the	North/South line	Feet from the	East/West line	County
0	2	21-S	33-E		330	SOUTH	1980	EAST	LEA

Bottom Hole Location If Different From Surface

UL or lot No.	Section	Township	Range	Lot Idn	Feet from the	North/South line	Feet from the	East/West line	County
2	2	21-S	33-E		330	NORTH	1980	EAST	LEA
Dedicated Acres 160.17	Joint or Infill	Consolidation Code	Order No.						

NO ALLOWABLE WILL BE ASSIGNED TO THIS COMPLETION UNTIL ALL INTERESTS HAVE BEEN CONSOLIDATED  
OR A NON-STANDARD UNIT HAS BEEN APPROVED BY THE DIVISION



OPERATOR CERTIFICATION

I hereby certify that the information herein is true and complete to the best of my knowledge and belief, and that this organization either owns a working interest or unleased mineral interest in the land including the proposed bottom hole location or has a right to drill this well at this location pursuant to a contract with an owner of such mineral or working interest, or to a voluntary pooling agreement or a compulsory pooling order heretofore entered by the division.

*Melanie J. Parker* 9/24/12  
Signature Date  
*Melanie J. Parker*  
Printed Name

SURVEYOR CERTIFICATION

I hereby certify that the well location shown on this plat was plotted from field notes of actual surveys made by me or under my supervision, and that the same is true and correct to the best of my belief.

AUGUST 16, 2012

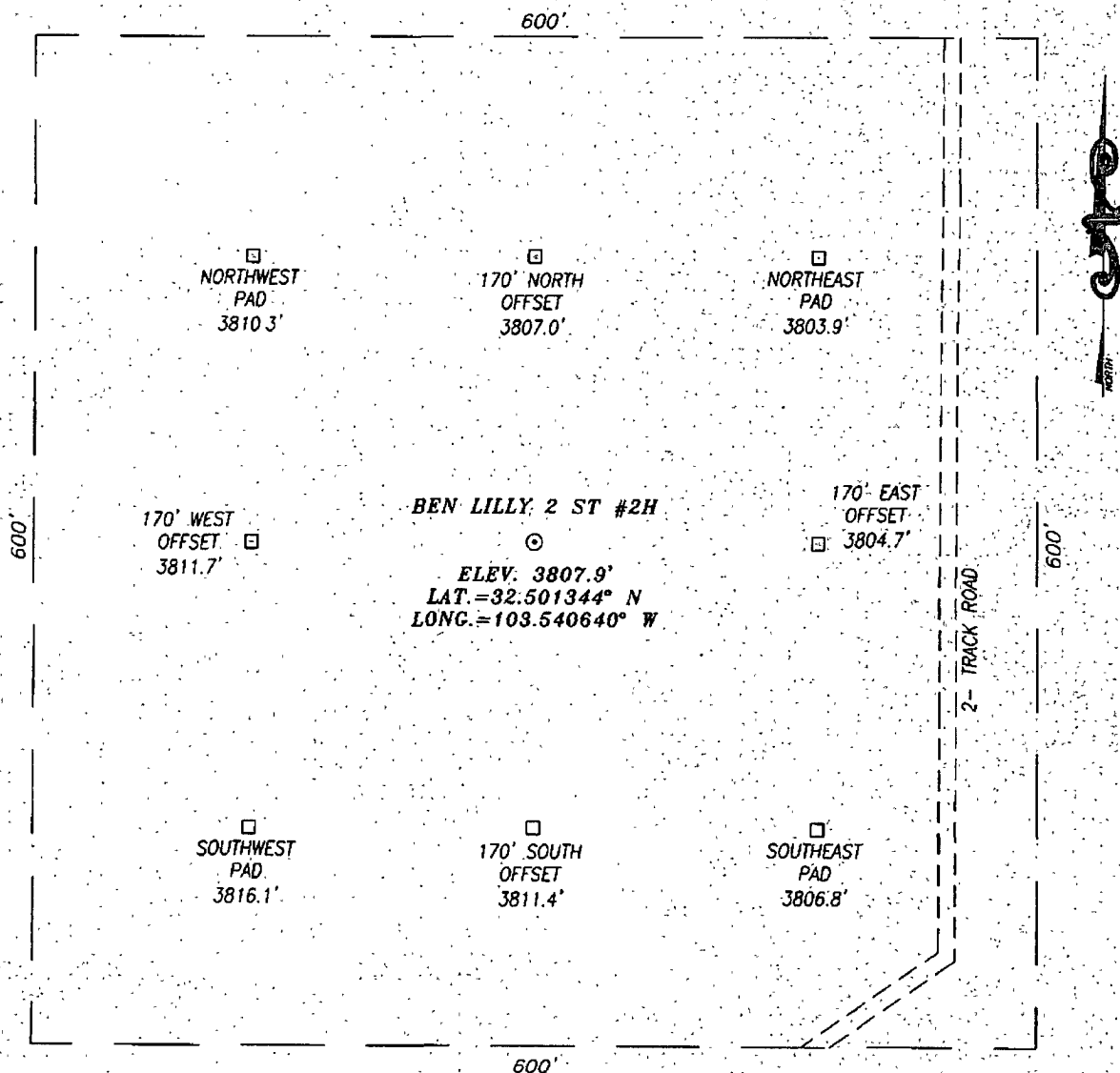
Date Surveyed

Signature & Title of Professional Surveyor

*Chad Harcrow*  
CHAD HARCROW  
17777  
12-037

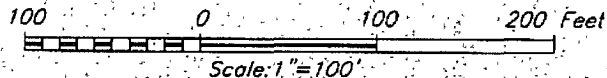
SEP 27 2012

SECTION 2, TOWNSHIP 21 SOUTH, RANGE 33 EAST, N.M.P.M.,  
LEA COUNTY NEW MEXICO



DIRECTIONS TO LOCATION:

HEADING EAST ON HWY. 176 TURN RIGHT 0.9 MILES PAST MILE MARKER 11 ONTO BERRY RANCH ROAD. GO SOUTH ON ROAD FOR APPROX. 0.7 MILES THEN TURN RIGHT ONTO A 2-TRACK ROAD. FOLLOW 2-TRACK ROAD FOR 0.7 MILES THEN TURN LEFT ONTO ANOTHER TWO TRACK ROAD. HEAD EAST 0.5 MILES AND WELL IS 0.2 MILES WEST.



**HARCROW SURVEYING**  
1107 WATSON, ARTESIA N.M. 88210  
PH: (575) 513-2570  
FAX: (575) 746-2808  
EST. 2007

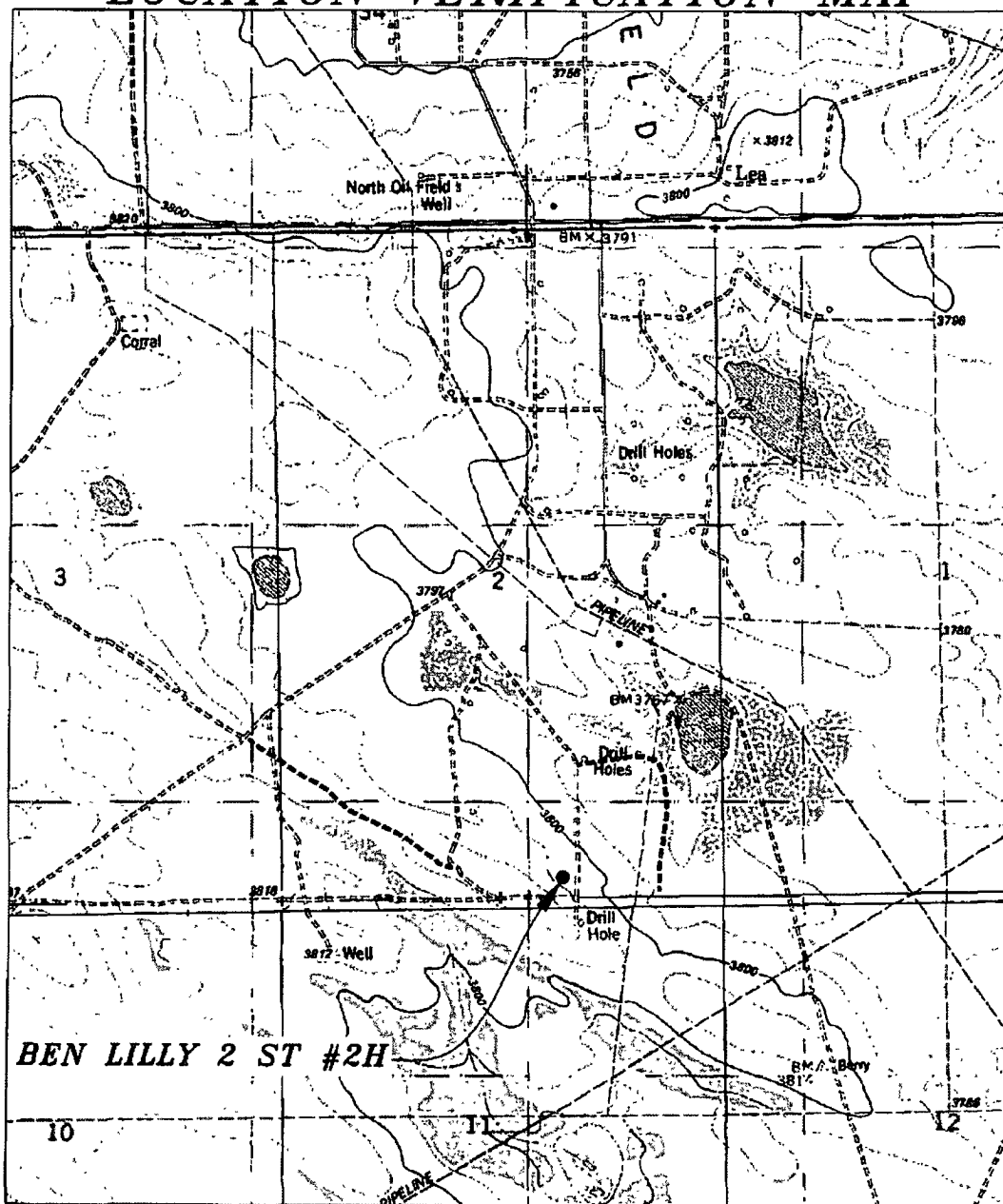


**COG OPERATING, LLC**

**BEN LILLY 2 ST #2H WELL**  
LOCATED 330 FEET FROM THE SOUTH LINE  
AND 1980 FEET FROM THE EAST LINE OF SECTION 2,  
TOWNSHIP 21 SOUTH, RANGE 33 EAST, N.M.P.M.,  
LEA COUNTY, NEW MEXICO

SURVEY DATE: AUGUST 06, 2012	PAGE: 1 OF 1
DRAFTING DATE: AUGUST 16, 2012	
APPROVED BY: CH	DRAWN BY: DDSI FILE: 12-066

# LOCATION VERIFICATION MAP



SCALE: 1" = 2000'

CONTOUR INTERVAL: 10'

SEC. 2 TWP. 21-S RGE. 33-E  
 SURVEY N.M.P.M.  
 COUNTY LEA STATE NEW MEXICO  
 DESCRIPTION 330' FSL & 1980' FEL  
 ELEVATION 3808'  
 OPERATOR COG OPERATING, LLC  
 LEASE BEN LILLY 2 ST  
 U.S.G.S. TOPOGRAPHIC MAP  
LEA, N.M.

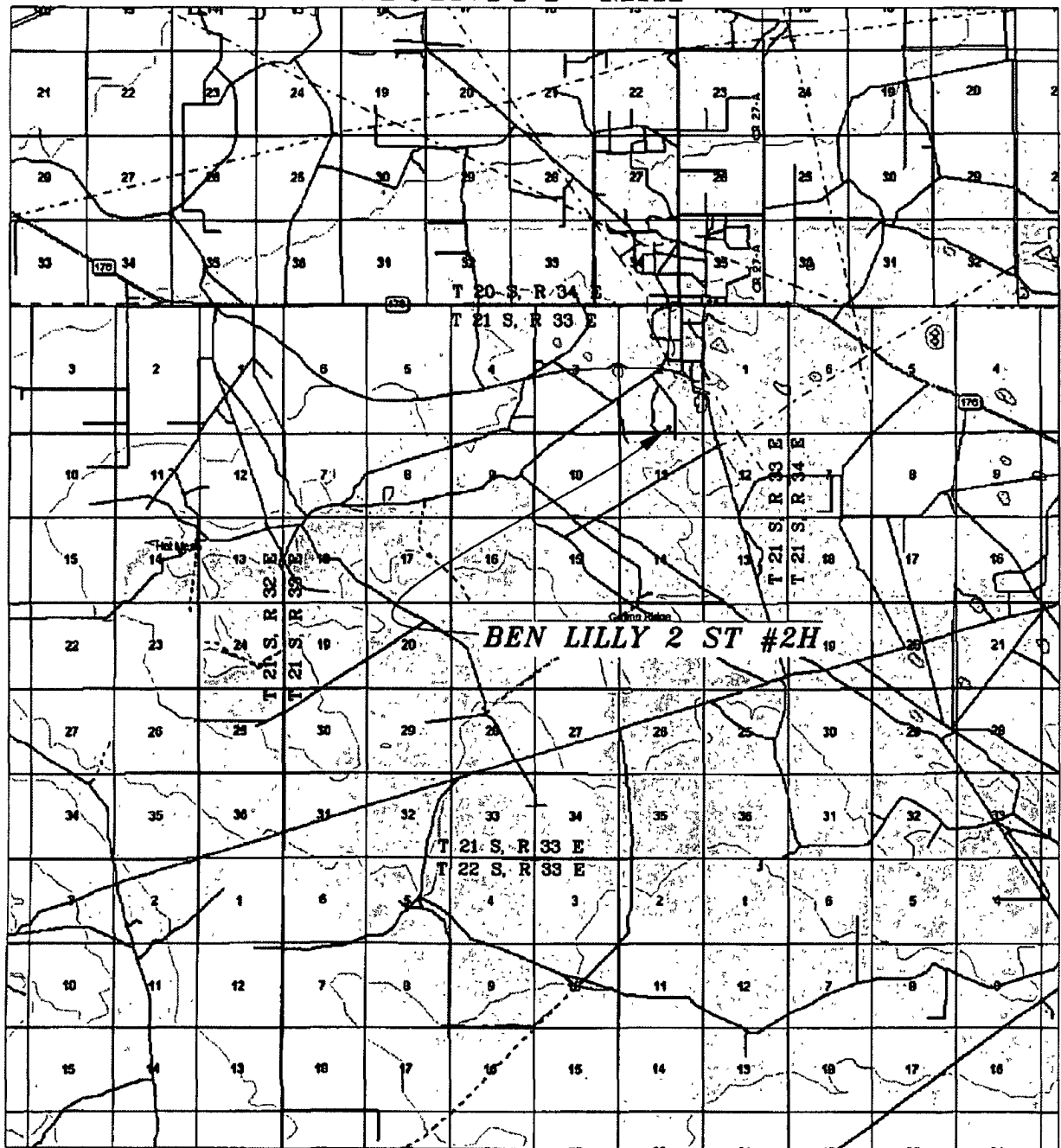
HARCROW SURVEYING  
 1107 WATSON, ARTESIA N.M. 88210  
 PH: (575) 513-2570  
 FAX: (575) 746-2808  
 EST. 2007



**COG OPERATING, LLC**

SURVEY DATE: AUGUST 07, 2012	PAGE: 1 OF 1
DRAFTING DATE: AUGUST 16, 2012	
APPROVED BY: CH	DRAWN BY: DDSI FILE: 12-066

# VICINITY MAP



SEC. 2 TWP. 21-S RGE. 33-E  
 SURVEY N.M.P.M.  
 COUNTY LEA STATE NEW MEXICO  
 DESCRIPTION 330' FSL & 1980' FEL  
 ELEVATION 3808'  
 OPERATOR COG OPERATING, LLC  
 LEASE BEN LILLY 2 ST

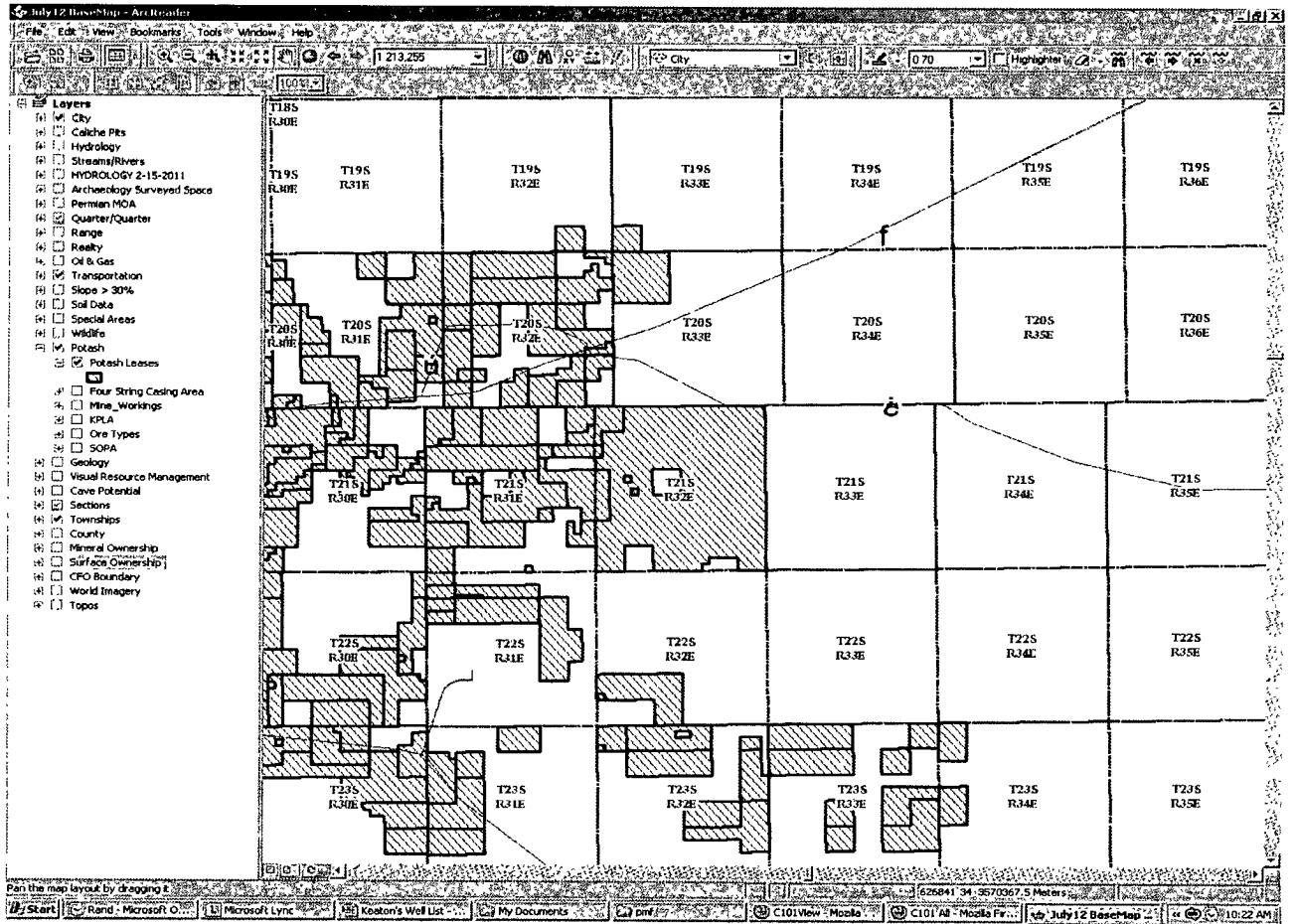
SCALE: 1" = 2 MILES

HARCROW SURVEYING  
 1107 WATSON, ARTESIA N.M. 88210  
 PH: (575) 513-2570  
 FAX: (575) 746-2888  
 EST. 2007



**COG OPERATING, LLC**

SURVEY DATE: AUGUST 07, 2012	PAGE: 1 OF 1
DRAFTING DATE: AUGUST 16, 2012	
APPROVED BY: CH	DRAWN BY: DDSI FILE: 12-066





September 26, 2012

Oil Conservation Division  
1625 N. French Drive  
Hobbs, New Mexico 88240

Attention: Mr. Paul Kautz

Re: Ben Lilly State Com #2H  
Unit O, Section 2, Township 21 South, Range 33 East  
Lea County, New Mexico

Dear Mr. Kautz:

Please be advised that there are no active potash leases within a one-mile radius of the proposed subject well. Attached is a copy of the BLM base map with potash leases marked in blue diagonal lines. There are no leases in all of Township 21 South, Range 33 East.

If you need anything further from COG regarding this APD, please don't hesitate to contact me at 575-748-6952 or [mparker@concho.com](mailto:mparker@concho.com).

Thank you.

Sincerely,

  
Mayte Reyes  
Regulatory Analyst

/mr  
Attachment