

HOBBS OCD

SEP 14 2012

Form C-102

Revised October 12, 2005

Submit to Appropriate District Office

RECEIVED

State Lease- 4 Copies

Fee Lease- 3 Copies

☒ AMENDED REPORT

District I
1625 N. French Dr., Hobbs, NM 88240
District II
1301 W. Grand Avenue, Artesia, NM 88210
District III
1000 Rio Brazos Rd., Aztec, NM 87410
District IV
1220 S. St. Francis Dr., Santa Fe, NM 87505

State of New Mexico
Energy, Minerals & Natural Resources Department
OIL CONSERVATION DIVISION
1220 South St. Francis Dr.
Santa Fe, NM 87505

WELL LOCATION AND ACREAGE DEDICATION PLAT

API Number 30-025-39955	Pool Code 31920	Pool Name HOBBS; GRAYBURG-SAN ANDRES
Property Code 19552	Property Name SOUTH HOBBS G/SA UNIT	Well Number 248
OGRID No. 157984	Operator Name OCCIDENTAL PERMIAN LTD.	Elevation 3601.7'

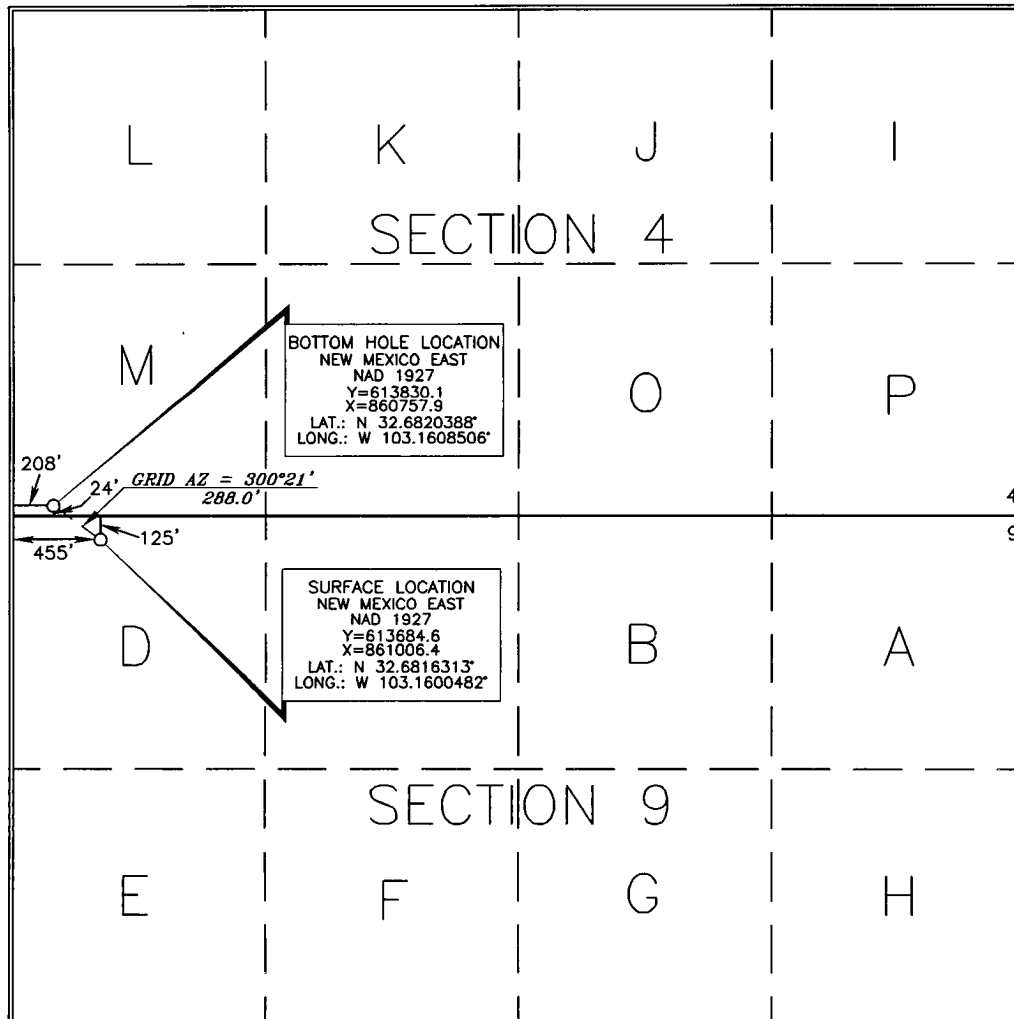
Surface Location

UL or lot no.	Section	Township	Range	Lot Idn	Feet from the	North/South line	Feet from the	East/West line	County
D	9	19 SOUTH	38 EAST, N.M.P.M.		125'	NORTH	455'	WEST	LEA

Bottom Hole Location If Different From Surface

UL or lot no.	Section	Township	Range	Lot Idn	Feet from the	North/South line	Feet from the	East/West line	County
M	4	19 SOUTH	38 EAST, N.M.P.M.		24' 17	SOUTH	208' 205	WEST	LEA
Dedicated Acres 40	Joint or Infill	Consolidation Code	Order No.						

No allowable will be assigned to this completion until all interests have been consolidated or a non-standard unit has been approved by the division.



OPERATOR CERTIFICATION

I hereby certify that the information contained herein is true and complete to the best of my knowledge and belief, and that this organization either owns a working interest or unleased mineral interest in the land including the proposed bottom hole location or has a right to drill this well at this location pursuant to a contract with an owner of such a mineral or working interest, or to a voluntary pooling agreement or a compulsory pooling order heretofore entered by the division.

Mark Stephens 9/17/12
Signature Date

Mark Stephens
Printed Name

SURVEYOR CERTIFICATION

I hereby certify that the well location shown on this plat was plotted from field notes of actual surveys made by me or under my supervision, and that the same is true and correct to the best of my belief.

SEPTEMBER 27, 2010
Date of Survey

Signature and Seal of
Professional Surveyor:

Terry J. Hall 9/13/2012
Certificate Number 15079

WO# 100430WL-a (Rev. D) (KA)

OCT 01 2012