

OCT 11 2012

1

**MULTI-POINT SURFACE USE PLAN**

**NAME OF WELL:** Pterodactyl 21 Fed 1H

**RECEIVED**

**LEGAL DESCRIPTION - SURFACE:** 190' FNL, 145' FEL, Section 21, T20S, R34E, Eddy County, NM.  
**BHL:** 660' FNL, 330' FWL, Section 21, T20S, R34E, Eddy County, New Mexico.

**POINT 1: EXISTING ROADS**

**A) Proposed Well Site Location:**

See Form C-102 (Survey Plat).

**B) Existing Roads:**

From the junction of 62-180 and Skeen Rd., go south on Skeen Rd. for 2.5 miles to lease Rd. On lease rd. go east 1.6 miles to proposed lease rd.

**C) Existing Road Maintenance or Improvement Plan:**

Existing roads will be maintained and kept in the same or better condition than before operations began. See the Well Pad Layout and Topo Map of the survey plat (Sheet 1 and 2 of plat package)

**POINT 2: NEW PLANNED ACCESS ROUTE**

**A) Route Location:**

Approximately 2,194' of new lease road will be built. (See the Well Pad Layout of the survey plat (Sheet 1 of plat package).

**B) Width**

14' wide

**C) Maximum Grade**

Grade to match existing topography or as per BLM requirements.

**D) Turnout Ditches**

As required by BLM stipulations

**E) Culverts, Cattle Guards, and Surfacing Equipment**

If required, culverts and cattle guards will be set per BLM Specs.

**POINT 3: LOCATION OF EXISTING WELLS**

The following wells are located within a one-mile radius of the location site. See the One-Mile Radius Map (Sheet 5 of the plat package).

Existing wells..... 7 (seven)  
Water wells..... 0 (zero)

OCT 18 2012

#### **POINT 4: LOCATION OF EXISTING OR PROPOSED FACILITIES**

- A) No existing production facilities operated by BOPCO, L.P. are located within one mile of the Pterodactyl 21 Fed 1H.

- B) New Facilities in the Event of Production:

New production facilities will be built at Pterodactyl 21 Fed 1H. A new separator / treater will be set at the Pterodactyl 21 Fed 1H. A rental generator will be set at Pterodactyl 21 Fed 1H for the initial testing. A sundry describing the permanent power line will be submitted at a later date.

- C) Rehabilitation of Disturbed Areas Unnecessary for Production:

Following the construction, those access areas required for continued production will be graded to provide drainage and minimize erosion. The areas unnecessary for use will be graded to blend in with the surrounding topography (see Point 10)

#### **POINT 5: LOCATION AND TYPE OF WATER SUPPLY**

- A) Location and Type of Water Supply

Fresh water will be hauled from Johnson Station 50 miles east of Carlsbad, New Mexico or other commercial facilities. Brine water will be hauled from commercial facilities.

- B) Water Transportation System

Water hauling to the location will be over the existing and proposed roads.

#### **POINT 6: SOURCE OF CONSTRUCTION MATERIALS**

- A) Materials

On-site caliche will be used. If this is not sufficient, caliche will be hauled from a BLM approved pit.

- B) Land Ownership

Federally Owned

- C) Materials Foreign to the Site

No construction materials foreign to this area are anticipated for this drill site

- D) Access Roads

See the Well Pad Layout and Aerial Map of the survey plat (Sheet 1 and 4 of plat package)

**POINT 7: METHODS FOR HANDLING WASTE MATERIAL****A) Cuttings**

Cuttings will be contained in the roll off bins and disposed at Controlled Recovery Inc. located in Lea county, NM.

**B) Drilling Fluids**

Drilling fluids will be contained in the steel pits, frac tanks and disposed at licensed disposal sites.

**C) Produced Fluids**

Water production will be contained in the steel pits.

Hydrocarbon fluid or other fluids that may be produced during testing will be retained in test tanks. Prior to cleanup operations, any hydrocarbon material in the reserve pit will be removed by skimming or burning as the situation would dictate.

**D) Sewage**

Current laws and regulations pertaining to the disposal of human waste will be complied with.

**E) Garbage**

Portable containers will be utilized for garbage disposal during the drilling of this well.

**F) Cleanup of Well Site**

Upon release of the drilling rig, the surface of the drilling pad will be graded to accommodate a completion rig if electric log analysis indicate potential productive zones. Reasonable cleanup will be performed prior to the final restoration of the site.

**POINT 8: ANCILLARY FACILITIES**

None required.

**POINT 9: WELL SITE LAYOUT****A) Rig Orientation and Layout**

The "Rig Layout Schematic" (Sheet 6 of plat package) shows the dimensions of the well pad, closed loop system, and the location of major rig components. Only minor leveling of the well site will be required. No significant cuts or fills will be necessary.

**B) Locations of Access Road**

See the Well Pad Layout, Topo Map, and Vicinity Map of the survey plat (Sheet 1, 2, and 3 of plat package).

**C) Lining of the Pits**

No reserve pits - closed loop system.

## POINT 10: PLANS FOR RESTORATION OF THE SURFACE

### A) Reserve Pit Cleanup - Not applicable. Closed loop drilling fluid system will be used

The pits will be fenced immediately after construction and shall be maintained until they are backfilled. Previous to backfill operations, any hydrocarbon material on the pits' surfaces shall be removed. The fluids and solids contained in the pits shall be backfilled with soil excavated from the site and soil adjacent to the reserve pits. The restored surface of the pits shall be contoured to prevent impoundment of surface water flow. Water-bars will be constructed as needed to prevent excessive erosion. Topsoil, as available, shall be placed over the restored surface in a uniform layer. The area will be seeded according to the Bureau of Land Management stipulations during the appropriate season following restoration.

### B) Restoration Plans - Production Developed

Those areas not required for production will be graded to blend with the surrounding topography. Topsoil, as available, will be placed upon those areas and seeded. The portion of the site required for production will be graded to minimize erosion and provide access during inclement conditions. Following depletion and abandonment of the site, restoration procedures will be those that follow under Item C. See diagram 3 for the proposed interim reclamation plat

### C) Restoration Plans - No Production Developed

With no production developed, the entire surface disturbed by construction of the well site will be restored. The site will be contoured to blend with the surrounding topography and provide drainage of surface water. The topsoil, as available, shall be replaced in a uniform layer and seeded according to the Bureau of Land Management's stipulations.

### D) Rehabilitation's Timetable

Upon completion of drilling operations, the initial cleanup of the site will be performed as soon as weather and site conditions allow economic execution of the work.

## POINT 11: OTHER INFORMATION

### A) On-Site

On January 31, 2012, a BLM on-site meeting was held with Cecil Watkins with BOPCO, L.P., Randy Rust with the BLM, and Robert Gomez with Basin Surveys. The Pterodactyl 21 Fed 1H was approved at 190' FNL, 145' FEL, Sec 21-20S-R34E. The pad was rotated w/short side parallel with east section fence line. V-Door south

### B) Soil

Caliche and sand.

### C) Vegetation

Sparse, primarily grasses and mesquite with very little grass.

**POINT 11: OTHER INFORMATION – cont'd...****D) Surface Use**

Primarily grazing.

**E) Surface Water**

There are no ponds, lakes, streams or rivers within several miles of the wellsite.

**F) Water Wells**

There are no water wells located within a 1 mile radius of the proposed location.

**G) Residences and Buildings**

None in the immediate vicinity.

**H) Historical Sites**

None observed.

**I) Archeological Resources**

There will be an independent archaeological study done on this well site by an independent archaeological service provider.

**J) Surface Ownership**

The well site is on federally owned land. There will be 2,194' no new access roads required for this location.

**K) Well signs will be posted at the drilling site.****L) Open Pits**

No open pits will be used for drilling or production. Any open top tanks will be netted.

**M) Terrain**

Slightly rolling hills.

**POINT 12: OPERATOR'S FIELD REPRESENTATIVE**

(Field personnel responsible for compliance with development plan for surface use).

**DRILLING**

Stephen Martinez  
Box 2760  
Midland, Texas 79702  
(432) 683-2277

**PRODUCTION**

Gary Fletcher  
3104 East Green Street  
Carlsbad, New Mexico 88220  
(575) 887-7329

Carlos Cruz  
Box 2760  
Midland, Texas 79702  
(432) 683-2277

JDB

**BOPCO, L.P.**

P. O. Box 2760  
Midland, Texas 79702

432-683-2277

FAX-432-687-0329

July 11, 2012

Bureau of Land Management  
Carlsbad Field Office  
620 East Green Street  
Carlsbad, New Mexico 88220-6292

Attn: Mr. Don Peterson – Assistant Field Manager, Minerals

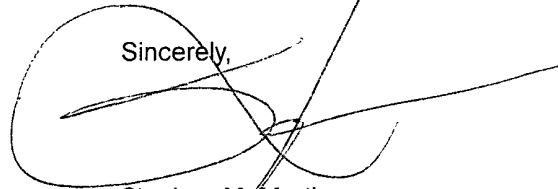
RE: APPLICATION FOR PERMIT TO DRILL  
Pterodactyl 21 Fed 1H  
190' FNL, 145' FEL, SEC. 23, T24S, R30E, EDDY COUNTY, NM

Dear Mr. Peterson,

In reference to the above captioned well, I hereby certify that I, or persons under my direct supervision have inspected the proposed drill site and access route; that I am familiar with the conditions which currently exist; that the statements made in the attached eight point drilling plan and multi-use surface plan are, to the best of my knowledge, true and correct; and that the work associated with operations proposed herein will be performed by BOPCO, L.P. and it's contractors and subcontractors in conformity with this plan and the terms and conditions under which it is approved. This statement is subject to the provisions of 18 U.S.C. 1001 for the filing of a false statement.

If you have any questions regarding the accuracy of the plan provided herein, please do not hesitate to contact me at (432) 683-2277.

Sincerely,

A handwritten signature in black ink, appearing to be "Stephen M. Martinez", written over a large, loopy circular flourish.

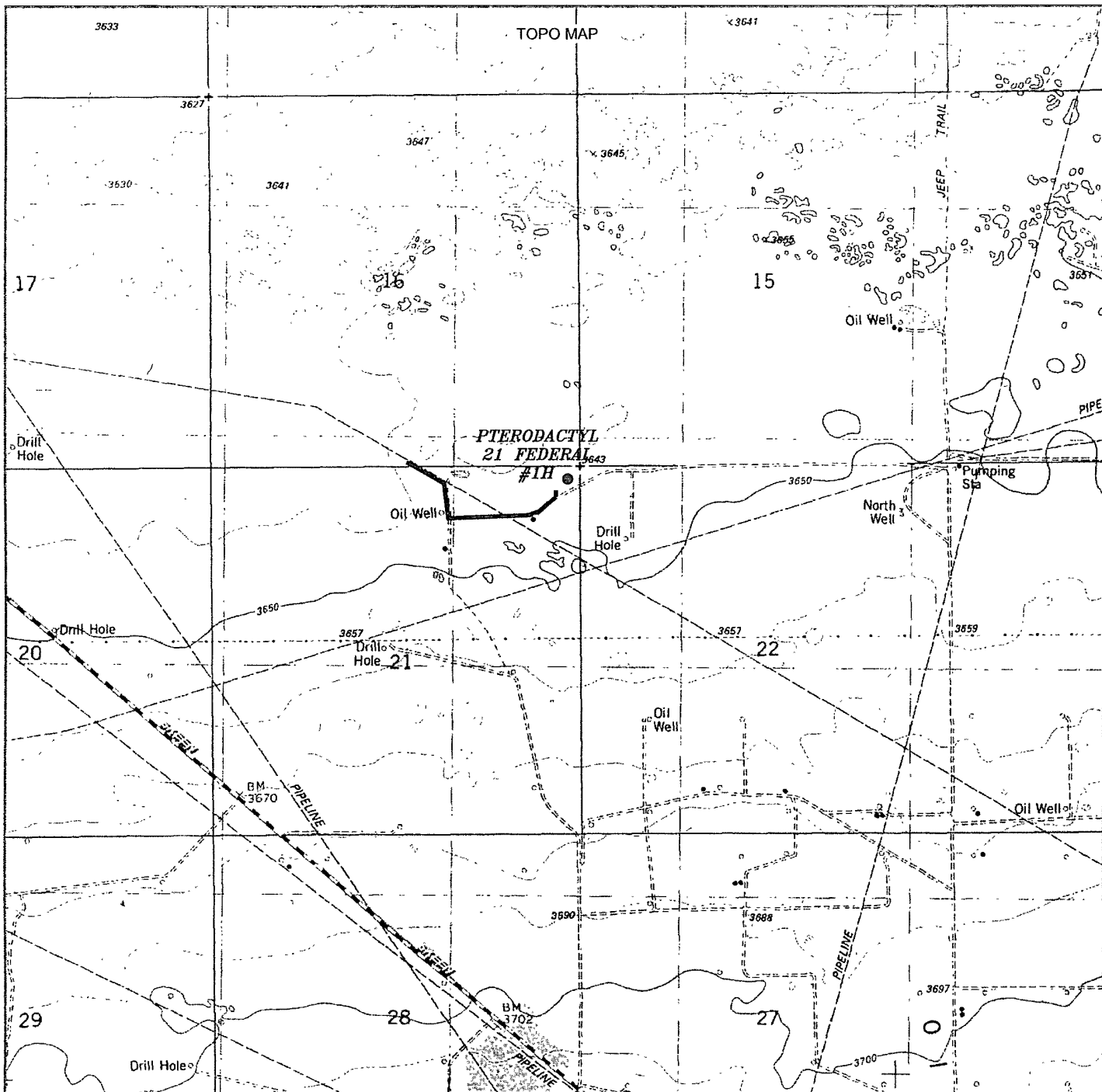
Stephen M. Martinez  
Division Drilling Superintendent

## WELL PAD LAYOUT



|                         |                     |
|-------------------------|---------------------|
| Survey Date. 02-01-2012 | Sheet 1 of 6 Sheets |
|-------------------------|---------------------|





**PTERODACTYL 21 FEDERAL #1H**  
 Located 190' FNL and 145' FEL  
 Section 21, Township 20 South, Range 34 East,  
 N.M.P.M., Lea County, New Mexico.

**basin  
surveys**  
 focused on excellence  
 in the oilfield

P.O. Box 1786  
 1120 N. West County Rd.  
 Hobbs, New Mexico 88241  
 (575) 393-7316 - Office  
 (575) 392-2206 - Fax  
 basinsurveys.com

W.O. Number: JMS - 26057

Survey Date: 02-01-2012

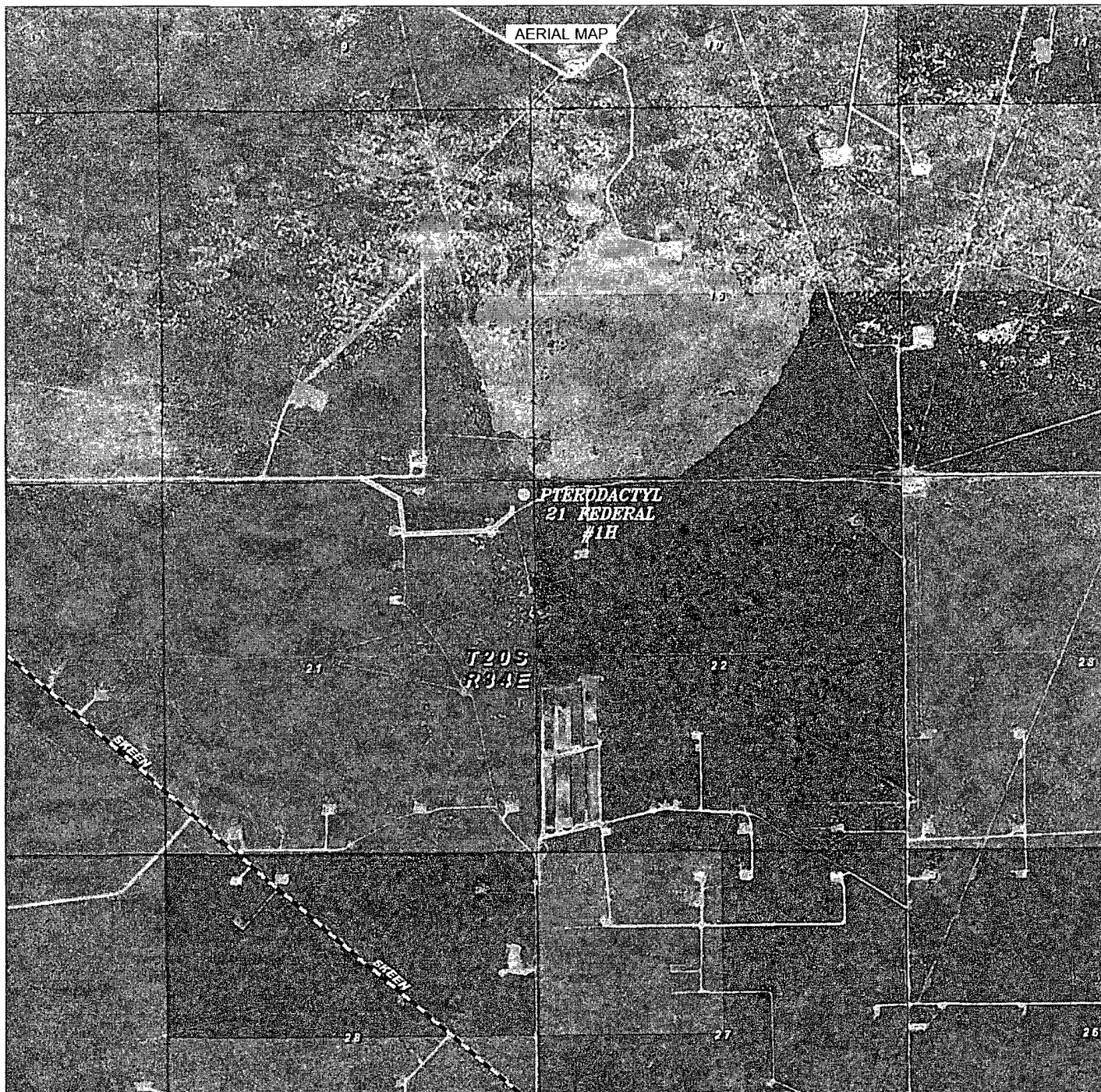
Scale: 1" = 2000'

Date: 02-15-2012

*BOPCO, L.P.*

Sheet 2 of 6 Sheets





**PTERODACTYL 21 FEDERAL #1H**  
 Located 190' FNL and 145' FEL  
 Section 21, Township 20 South, Range 34 East,  
 N.M.P.M., Lea County, New Mexico.

**basin**  
**surveys**  
 focused on excellence  
 in the oilfield

P.O. Box 1786  
 1120 N. West County Rd.  
 Hobbs, New Mexico 88241  
 (575) 393-7316 - Office  
 (575) 392-2206 - Fax  
 basinsurveys.com

W.O. Number: JMS - 26057

Scale: 1" = 2000'

YELLOW TINT - USA LAND  
 BLUE TINT - STATE LAND  
 NATURAL COLOR - FEE LAND



*BOPCO, L.P.*

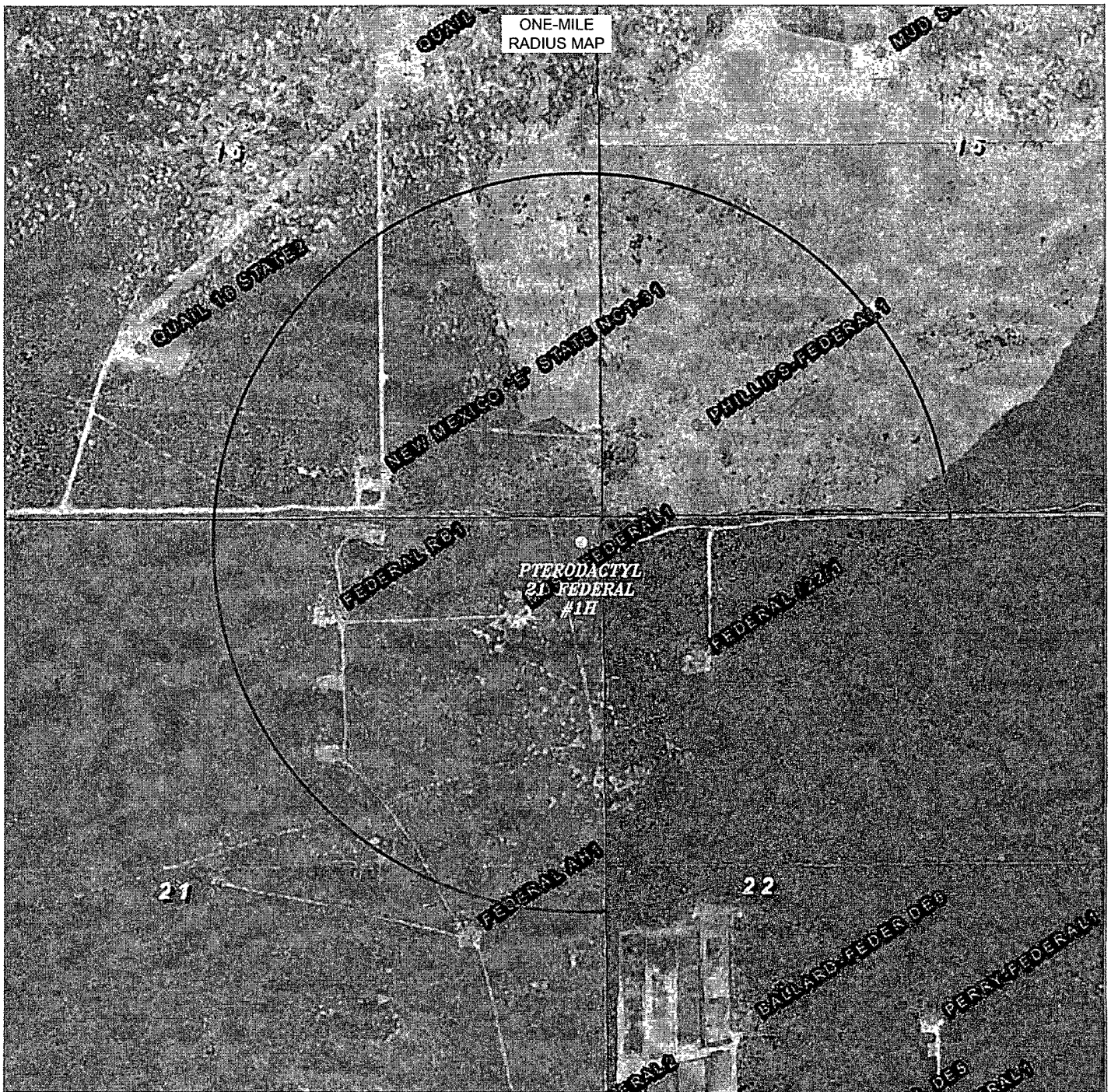
Sheet 4 of 6 Sheets

The map displays a grid of numbered plots (14-36) and specific locations. A large circle highlights a central area labeled "20S 34E". The map includes numerous numerical coordinates and labels for specific features like "Charles Leamas Federal #2 (6.77 BOLD)" and "Charles Leamas Federal #1 (6.77 BOLD)". The map is oriented with North at the top.

Key features and labels include:

- Plots: 14, 15, 16, 17, 18, 19, 20, 21, 22, 23, 24, 25, 26, 27, 28, 29, 30, 31, 32, 33, 34, 35, 36.
- Coordinates: 13.600, 13.610, 13.620, 13.630, 13.640, 13.650, 13.660, 13.670, 13.680, 13.690, 13.700, 13.710, 13.720, 13.730, 13.740, 13.750, 13.760, 13.770, 13.780, 13.790, 13.800, 13.810, 13.820, 13.830, 13.840, 13.850, 13.860, 13.870, 13.880, 13.890, 13.900, 13.910, 13.920, 13.930, 13.940, 13.950, 13.960, 13.970, 13.980, 13.990, 14.000, 14.010, 14.020, 14.030, 14.040, 14.050, 14.060, 14.070, 14.080, 14.090, 14.100, 14.110, 14.120, 14.130, 14.140, 14.150, 14.160, 14.170, 14.180, 14.190, 14.200, 14.210, 14.220, 14.230, 14.240, 14.250, 14.260, 14.270, 14.280, 14.290, 14.300, 14.310, 14.320, 14.330, 14.340, 14.350, 14.360, 14.370, 14.380, 14.390, 14.400, 14.410, 14.420, 14.430, 14.440, 14.450, 14.460, 14.470, 14.480, 14.490, 14.500, 14.510, 14.520, 14.530, 14.540, 14.550, 14.560, 14.570, 14.580, 14.590, 14.600, 14.610, 14.620, 14.630, 14.640, 14.650, 14.660, 14.670, 14.680, 14.690, 14.700, 14.710, 14.720, 14.730, 14.740, 14.750, 14.760, 14.770, 14.780, 14.790, 14.800, 14.810, 14.820, 14.830, 14.840, 14.850, 14.860, 14.870, 14.880, 14.890, 14.900, 14.910, 14.920, 14.930, 14.940, 14.950, 14.960, 14.970, 14.980, 14.990, 15.000, 15.010, 15.020, 15.030, 15.040, 15.050, 15.060, 15.070, 15.080, 15.090, 15.100, 15.110, 15.120, 15.130, 15.140, 15.150, 15.160, 15.170, 15.180, 15.190, 15.200, 15.210, 15.220, 15.230, 15.240, 15.250, 15.260, 15.270, 15.280, 15.290, 15.300, 15.310, 15.320, 15.330, 15.340, 15.350, 15.360, 15.370, 15.380, 15.390, 15.400, 15.410, 15.420, 15.430, 15.440, 15.450, 15.460, 15.470, 15.480, 15.490, 15.500, 15.510, 15.520, 15.530, 15.540, 15.550, 15.560, 15.570, 15.580, 15.590, 15.600, 15.610, 15.620, 15.630, 15.640, 15.650, 15.660, 15.670, 15.680, 15.690, 15.700, 15.710, 15.720, 15.730, 15.740, 15.750, 15.760, 15.770, 15.780, 15.790, 15.800, 15.810, 15.820, 15.830, 15.840, 15.850, 15.860, 15.870, 15.880, 15.890, 15.900, 15.910, 15.920, 15.930, 15.940, 15.950, 15.960, 15.970, 15.980, 15.990, 16.000, 16.010, 16.020, 16.030, 16.040, 16.050, 16.060, 16.070, 16.080, 16.090, 16.100, 16.110, 16.120, 16.130, 16.140, 16.150, 16.160, 16.170, 16.180, 16.190, 16.200, 16.210, 16.220, 16.230, 16.240, 16.250, 16.260, 16.270, 16.280, 16.290, 16.300, 16.310, 16.320, 16.330, 16.340, 16.350, 16.360, 16.370, 16.380, 16.390, 16.400, 16.410, 16.420, 16.430, 16.440, 16.450, 16.460, 16.470, 16.480, 16.490, 16.500, 16.510, 16.520, 16.530, 16.540, 16.550, 16.560, 16.570, 16.580, 16.590, 16.600, 16.610, 16.620, 16.630, 16.640, 16.650, 16.660, 16.670, 16.680, 16.690, 16.700, 16.710, 16.720, 16.730, 16.740, 16.750, 16.760, 16.770, 16.780, 16.790, 16.800, 16.810, 16.820, 16.830, 16.840, 16.850, 16.860, 16.870, 16.880, 16.890, 16.900, 16.910, 16.920, 16.930, 16.940, 16.950, 16.960, 16.970, 16.980, 16.990, 17.000, 17.010, 17.020, 17.030, 17.040, 17.050, 17.060, 17.070, 17.080, 17.090, 17.100, 17.110, 17.120, 17.130, 17.140, 17.150, 17.160, 17.170, 17.180, 17.190, 17.200, 17.210, 17.220, 17.230, 17.240, 17.250, 17.260, 17.270, 17.280, 17.290, 17.300, 17.310, 17.320, 17.330, 17.340, 17.350, 17.360, 17.370, 17.380, 17.390, 17.400, 17.410, 17.420, 17.430, 17.440, 17.450, 17.460, 17.470, 17.480, 17.490, 17.500, 17.510, 17.520, 17.530, 17.540, 17.550, 17.560, 17.570, 17.580, 17.590, 17.600, 17.610, 17.620, 17.630, 17.640, 17.650, 17.660, 17.670, 17.680, 17.690, 17.700, 17.710, 17.720, 17.730, 17.740, 17.750, 17.760, 17.770, 17.780, 17.790, 17.800, 17.810, 17.820, 17.830, 17.840, 17.850, 17.860, 17.870, 17.880, 17.890, 17.900, 17.910, 17.920, 17.930, 17.940, 17.950, 17.960, 17.970, 17.980, 17.990, 18.000, 18.010, 18.020, 18.030, 18.040, 18.050, 18.060, 18.070, 18.080, 18.090, 18.100, 18.110, 18.120, 18.130, 18.140, 18.150, 18.160, 18.170, 18.180, 18.190, 18.200, 18.210, 18.220, 18.230, 18.240, 18.250, 18.260, 18.270, 18.280, 18.290, 18.300, 18.310, 18.





**PTERODACTYL 21 FEDERAL #1H**  
 Located 190' FNL and 145' FEL  
 Section 21, Township 20 South, Range 34 East,  
 N.M.P.M., Lea County, New Mexico.

**basin**  
**surveys**

focused on excellence  
 in the oilfield

P.O. Box 1786  
 1120 N. West County Rd.  
 Hobbs, New Mexico 88241  
 (575) 393-7316 - Office  
 (575) 392-2206 - Fax  
 basinsurveys.com

W.O. Number. JMS - 26057

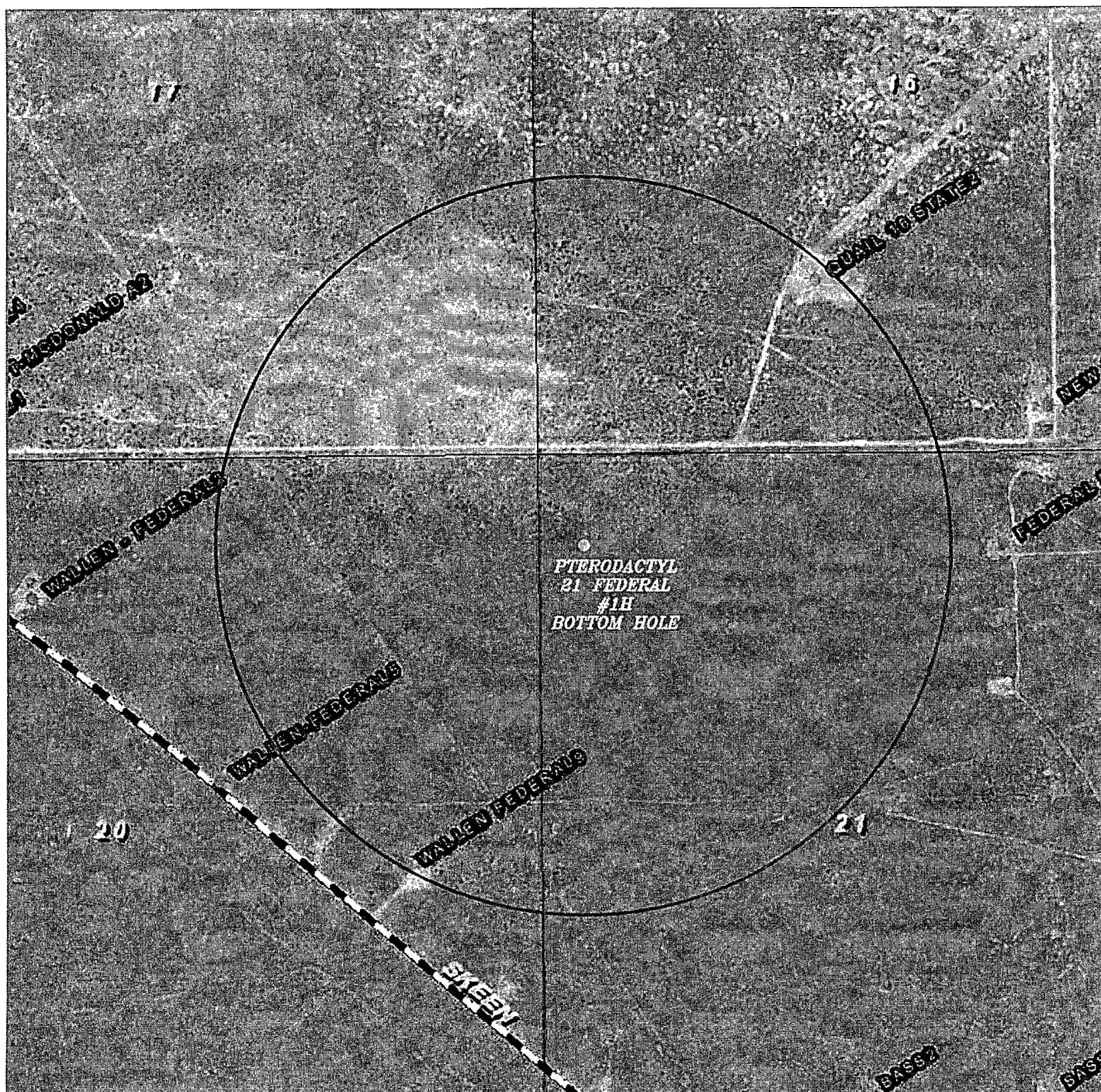
Scale: None

YELLOW TINT - USA LAND  
 BLUE TINT - STATE LAND  
 NATURAL COLOR - FEE LAND



*BOPCO, L.P.*

Sheet 5 of 6 Sheets



PTERODACTYL 21 FEDERAL #1H  
 Located 190' FNL and 145' FEL  
 Section 21, Township 20 South, Range 34 East,  
 N.M.P.M., Lea County, New Mexico.

**basin**  
**surveys**  
 focused on excellence  
 in the oilfield

P.O. Box 1786  
 1120 N. West County Rd.  
 Hobbs, New Mexico 88241  
 (575) 393-7316 - Office  
 (575) 392-2206 - Fax  
 basinsurveys.com

W.O. Number: JMS - 26057

Scale: None

YELLOW TINT - USA LAND  
 BLUE TINT - STATE LAND  
 NATURAL COLOR - FEE LAND



*BOPCO, L.P.*