

HOBBS OCD

HOBBS OCD

DISTRICT I

1625 N. French Dr., Hobbs, NM 88240
Phone (575) 823-6161 Fax (575) 823-0720

DISTRICT II

611 S. First St., Artesia, NM 88210
Phone (575) 748-1263 Fax (575) 748-0720

DISTRICT III

1000 Rio Brazos Rd., Aztec, NM 87410
Phone (505) 834-6178 Fax (505) 334-6170

DISTRICT IV

1820 S. St. Francis Dr., Santa Fe, NM 87505
Phone (505) 476-3400 Fax (505) 476-3462

17 2012

State of New Mexico
Energy, Minerals and Natural Resources Department

RECEIVED

OIL CONSERVATION DIVISION

1220 South St. Francis Dr.
Santa Fe, New Mexico 87505

OCT 17 2012

Form C-102

Revised August 1, 2011

RECEIVED

Submit one copy to appropriate
District Office

WELL LOCATION AND ACREAGE DEDICATION PLAT

☐ AMENDED REPORT

API Number 30-025-40824	Pool Code 22900	Pool Name Eunice; Blinbury-Jubb-Brinkard-North
Property Code 22503	Property Name NORTHEAST DRINKARD UNIT	Well Number 267
UGRD No. 873	Operator Name APACHE CORPORATION	Elevation 3428'

Surface Location

UL or lot No.	Section	Township	Range	Lot Idn	Feet from the	North/South line	Feet from the	East/West line	County
LOT 13	3	21 S	37 E		2890	SOUTH	920	WEST	LEA

Bottom Hole Location If Different From Surface

UL or lot No.	Section	Township	Range	Lot Idn	Feet from the	North/South line	Feet from the	East/West line	County
Q	3	21 S	37 E		2465	SOUTH	845	WEST	LEA

Dedicated Acres 80	Joint or Infill	Consolidation Code	Order No.
------------------------------	-----------------	--------------------	-----------

NO ALLOWABLE WILL BE ASSIGNED TO THIS COMPLETION UNTIL ALL INTERESTS HAVE BEEN CONSOLIDATED
OR A NON-STANDARD UNIT HAS BEEN APPROVED BY THE DIVISION

OPERATOR CERTIFICATION

I hereby certify that the information contained herein is true and complete to the best of my knowledge and belief, and that this organization either owns a working interest or unleased mineral interest in the land including the proposed bottom hole location or has a right to drill this well at this location pursuant to a contract with an owner of such a mineral or working interest, or to a voluntary pooling agreement or a compulsory pooling order heretofore entered by the Division.

Vicki Brown 10/9/12
Signature Date

Vicki Brown
Printed Name

vicki.brown@apachecorp.com
Email Address

SURVEYOR CERTIFICATION

I hereby certify that the well location shown on this plat was plotted from field notes of actual surveys made by me or under my supervision and that the same is true and correct to the best of my belief.

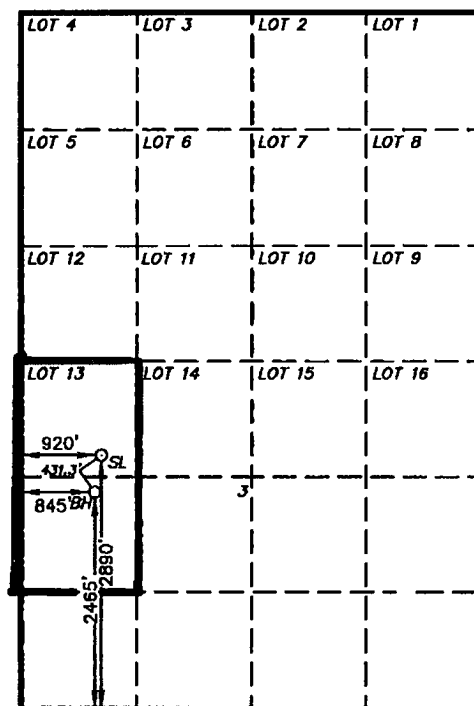
SEPTEMBER 11 2012

Date Surveyed
Signature of Professional Surveyor

No. 27325

Certificate No. Gary L. Jones 7977

BASIN SURVEYS 27325



SURFACE LOCATION

Lot - N 32°30'31.14"
Long - W 103°08'23.40"
NMSPC - N 550780.346
E 904124.552
(NAD-83)

Lot - N 32°30'30.71"
Long - W 103°08'21.70"
NMSPC - N 550720.307
E 862940.719
(NAD-27)

PROPOSED BOTTOM

HOLE LOCATION

Lot - N 32°30'26.84"
Long - W 103°08'24.27"
NMSPC - N 550354.757
E 904054.518
(NAD-83)

Lot - N 32°30'28.51"
Long - W 103°08'22.57"
NMSPC - N 550294.711
E 862870.662
(NAD-27)

32.508531
103.156028

32.507364

103.156249