

DISTRICT I
1625 N. French Dr., Hobbs, NM 88240
Phone (575) 393-6161 Fax: (575) 393-0720

DISTRICT II
811 S. First St., Artesia, NM 88210
Phone (575) 746-1283 Fax: (575) 746-0771

DISTRICT III
1000 Rio Brazos Rd., Aztec, NM 87410
Phone (505) 334-6178 Fax: (505) 334-6170

DISTRICT IV
1220 S. St. Francis Dr., Santa Fe, NM 87505
Phone (505) 476-3400 Fax: (505) 476-3402

State of New Mexico
Energy, Minerals and Natural Resources Department

Form C-102
Revised August 1, 2011

Submit one copy to appropriate
District Office

OIL CONSERVATION DIVISION

1220 South St. Francis Dr.
Santa Fe, New Mexico 87505

WELL LOCATION AND ACREAGE DEDICATION PLAT

☐ AMENDED REPORT

API Number 30-025-40827	Pool Code 27220	Pool Name Gern Lusk S.E. Bone Springs
Property Code 39483	Property Name GAY NINETIES FEDERAL COM	Well Number 1
OGRID No. 231429	Operator Name MANZANO, LLC	Elevation 3563'

Surface Location

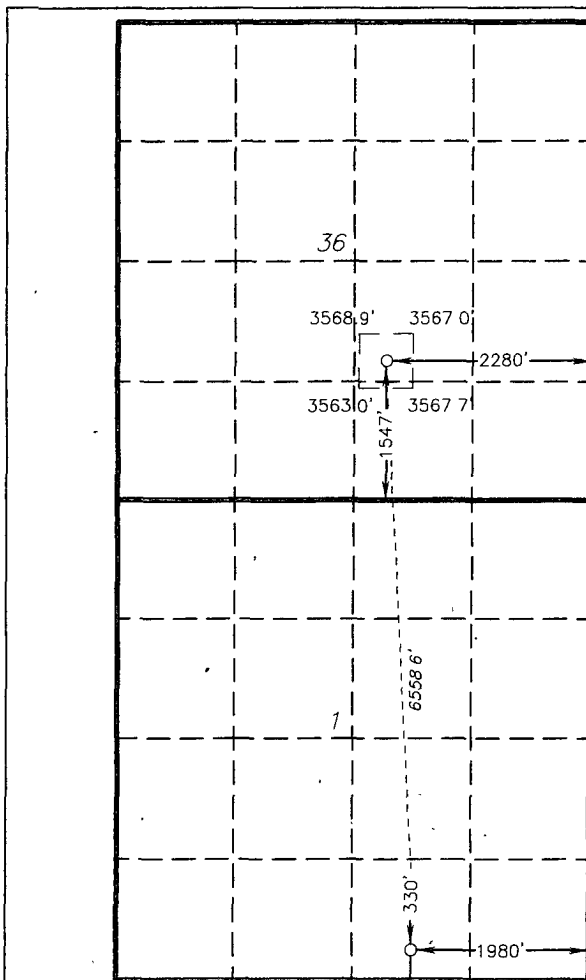
UL or lot No.	Section	Township	Range	Lot Idn	Feet from the	North/South line	Feet from the	East/West line	County
J	36	19 S	32 E		1547	SOUTH	2280	EAST	LEA

Bottom Hole Location If Different From Surface

UL or lot No.	Section	Township	Range	Lot Idn	Feet from the	North/South line	Feet from the	East/West line	County
O	1	20 S	32 E		330	SOUTH	1980	EAST	LEA

Dedicated Acres 160	Joint or Infill	Consolidation Code	Order No.
-------------------------------	-----------------	--------------------	-----------

NO ALLOWABLE WILL BE ASSIGNED TO THIS COMPLETION UNTIL ALL INTERESTS HAVE BEEN CONSOLIDATED
OR A NON-STANDARD UNIT HAS BEEN APPROVED BY THE DIVISION



SURFACE LOCATION
Lat - N 32°36'50.07"
Long - W 103°43'06.67"
NMSPCE- N 587618.208
E 730643.044
(NAD-83)

PROPOSED BOTTOM
HOLE LOCATION
Lat - N 32°35'45.25"
Long - W 103°43'03.29"
NMSPCE- N 581069.169
E 730970.504
(NAD-83)

OPERATOR CERTIFICATION

I hereby certify that the information contained herein is true and complete to the best of my knowledge and belief, and that this organization either owns a working interest or unleased mineral interest in the land including the proposed bottom hole location or has a right to drill this well at this location pursuant to a contract with an owner of such a mineral or working interest, or to a voluntary pooling agreement or a compulsory pooling order heretofore entered by the division.

Paul Ragsdale 6-12-12
Signature Date
Paul Ragsdale
Printed Name
paul@manzanenergy.com
Email Address

SURVEYOR CERTIFICATION

I hereby certify that the well location shown on this plat was plotted from field notes of actual surveys made by me or under my supervision and that the same is true and correct to the best of my belief

Date Surveyed
Signature & Seal of Professional Surveyor
GARY L. JONES
26633

Certificate No. Gary L. Jones 7977

BASIN SURVEYS 26633

1 Plat

OCT 22 2012