

OCT 22 2012

DISTRICT I
1025 N. French Dr., Hobbs, NM 88240
Phone (505) 393-8181 Fax: (505) 393-0720

DISTRICT II
811 S. First St., Artesia, NM 88210
Phone (505) 748-1283 Fax: (505) 748-9720

DISTRICT III
1000 Rio Brazos Rd., Aztec, NM 87410
Phone (505) 334-6178 Fax: (505) 334-6170

DISTRICT IV
1220 S. St. Francis Dr., Santa Fe, NM 87505
Phone (505) 478-3480 Fax: (505) 478-3482

RECEIVED

State of New Mexico
Energy, Minerals and Natural Resources Department

OIL CONSERVATION DIVISION

1220 South St. Francis Dr.
Santa Fe, New Mexico 87505

Form C-102
Revised August 1, 2011

Submit one copy to appropriate
District Office

WELL LOCATION AND ACREAGE DEDICATION PLAT

X AMENDED REPORT

API Number 30-025-40785	Pool Code 22900	Pool Name Eunice; Blinbury; Subb; Drinkard-North
Property Code 22503	Property Name NORTHEAST DRINKARD UNIT	Well Number 353
OGHD No. 873	Operator Name APACHE CORPORATION	Elevation 3424'

Surface Location

UL or lot No.	Section	Township	Range	Lot Idn	Feet from the	North/South line	Feet from the	East/West line	County
N	3	21 S	37 E		1255	SOUTH	2160	WEST	LEA

Bottom Hole Location If Different From Surface

UL or lot No.	Section	Township	Range	Lot Idn	Feet from the	North/South line	Feet from the	East/West line	County
Dedicated Acres 40	Joint or Infill	Consolidation Code	Order No.						

NO ALLOWABLE WILL BE ASSIGNED TO THIS COMPLETION UNTIL ALL INTERESTS HAVE BEEN CONSOLIDATED
OR A NON-STANDARD UNIT HAS BEEN APPROVED BY THE DIVISION

<p>SURFACE LOCATION Lat - N 32°30'14.98" Long - W 103°09'08.91" NMSPCE - N 549160.626 E 905383.037 (NAD-83) Lat - N 32°30'14.55" Long - W 103°09'07.22" NMSPCE - N 549100.655 E 864199.128 (NAD-27)</p>		<p>OPERATOR CERTIFICATION I hereby certify that the information contained herein is true and complete to the best of my knowledge and belief, and that this organization either owns a working interest or unleased mineral interest in the land including the proposed bottom hole location or has a right to drill this well at this location pursuant to a contract with an owner of such a mineral or working interest, or to a voluntary pooling agreement or a compulsory pooling order heretofore entered by the division. <i>Vicki Brown</i> 10/22/12 Signature Date <i>Vicki Brown</i> Printed Name <i>vicki.brown@apachecorp.com</i> Email Address</p>

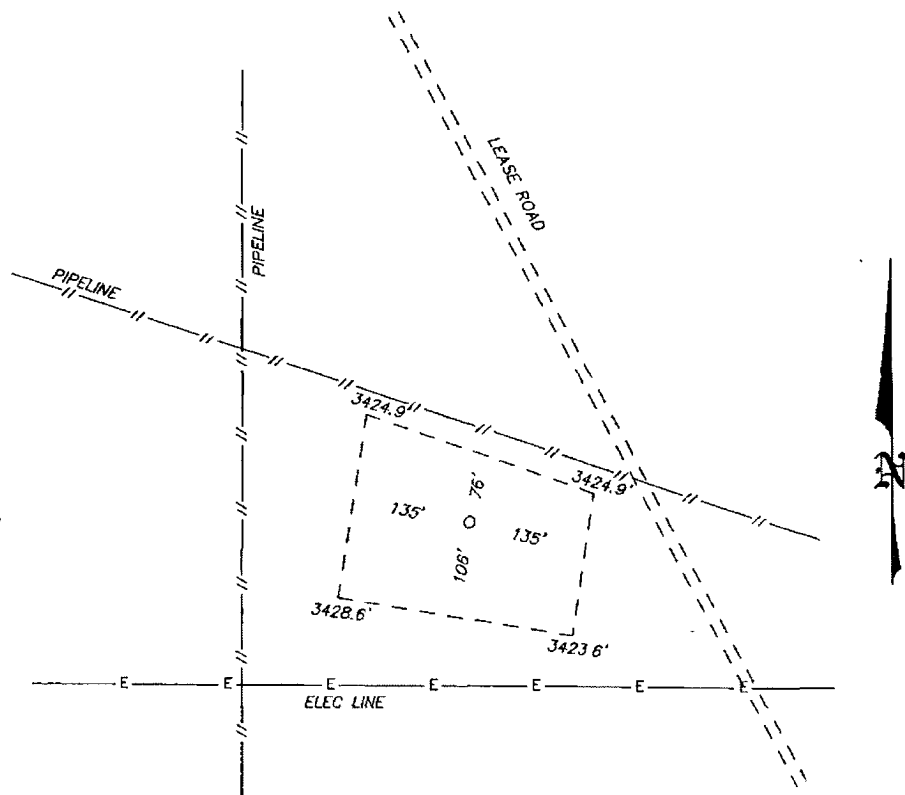
* Amended ECG 10-23-2012

OCT 23 2012

SECTION 3, TOWNSHIP 21 SOUTH, RANGE 37 EAST, N.M.P.M.,
LEA COUNTY, NEW MEXICO.

APACHE CORPORATION
NORTHEAST DRINKARD UNIT #353
ELEV. - 3424'

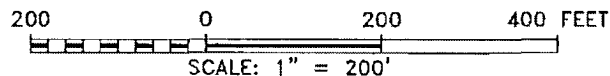
Lat - N 32°30'14.98"
Long - W 103°09'08.91"
NMSPCE- N 549160.626
E 905383.037
(NAD-83)
Lat - N 32°30'14.55"
Long - W 103°09'07.22"
NMSPCE- N 549100.655
E 864199.128
(NAD-27)



WELL IS LOCATED ABOUT 5 MILES NORTH OF EUNICE, NEW MEXICO.

Directions to Location:

FROM MILE CATTLE GUARD 17 OF HWY 207, GO
NORTHWEST 0.1 MILES TO PROPOSED LOCATION.



APACHE CORPORATION

REF: NORTHEAST DRINKARD UNIT #353 / WELL PAD TOPO

THE NORTHEAST DRINKARD UNIT #353 LOCATED 1255'
FROM THE SOUTH LINE AND 2160' FROM THE WEST LINE OF
SECTION 3, TOWNSHIP 21 SOUTH, RANGE 37 EAST,
N.M.P.M., LEA COUNTY, NEW MEXICO.

BASIN SURVEYS P.O. BOX 1786-HOBBS, NEW MEXICO

W.O. Number: 27505 Drawn By: J. SMALL

Date: 10-17-2012 Disk: JMS 27505

Survey Date: 10-01-2012

Sheet 1 of 1 Sheets

