

Submit 1 Copy To Appropriate District  
Office  
District I  
1625 N French Dr, Hobbs, NM 88240  
District II  
1301 W Grand Ave, Artesia, NM 88210  
District III  
1000 Rio Brazos Rd, Aztec, NM 87410  
District IV  
1220 S St Francis Dr, Santa Fe, NM  
87505

State of New Mexico  
Energy, Minerals and Natural Resources

Form C-103  
October 13, 2009

RECEIVED

OIL CONSERVATION DIVISION

OCT 29 2012 20 South St. Francis Dr.

HOBBSCD

Santa Fe, NM 87505

WELL API NO.  
30-025-38576

5. Indicate Type of Lease.  
STATE ☒ FEE ☐

6. State Oil & Gas Lease No.  
V07530-0001

7. Lease Name or Unit Agreement Name

Linam AGI

8. Well Number #1

9. OGRID Number  
36785

10. Pool name or Wildcat  
AGI: Wolfcamp

SUNDRY NOTICES AND REPORTS ON WELLS

(DO NOT USE THIS FORM FOR PROPOSALS TO DRILL OR TO DEEPEN OR PLUG BACK TO A DIFFERENT RESERVOIR USE "APPLICATION FOR PERMIT" (FORM C-101) FOR SUCH PROPOSALS)

1. Type of Well: Oil Well ☐ Gas Well ☐ Other Acid Gas Injection ☒

2. Name of Operator

DCP Midstream LP

3. Address of Operator

370 17<sup>th</sup> Street, Suite 2500, Denver, CO 80202

4. Well Location

Unit Letter K : 1980 feet from the South line and 1980 feet from the West line

Section 30 Township 18S Range 37E NMPM County Lea

11. Elevation (Show whether DR, RKB, RT, GR, etc.)  
3736 GR

12. Check Appropriate Box to Indicate Nature of Notice, Report or Other Data

NOTICE OF INTENTION TO:

PERFORM REMEDIAL WORK ☐ PLUG AND ABANDON ☐  
TEMPORARILY ABANDON ☐ CHANGE PLANS ☐  
PULL OR ALTER CASING ☐ MULTIPLE COMPL ☐  
DOWNHOLE COMMINGLE ☐

SUBSEQUENT REPORT OF:

REMEDIAL WORK ☐ ALTERING CASING ☐  
COMMENCE DRILLING OPNS. ☐ P AND A ☐  
CASING/CEMENT JOB ☐

OTHER ☒ Conduct MIT tests

OTHER: ☐

13. Describe proposed or completed operations. (Clearly state all pertinent details, and give pertinent dates, including estimated date of starting any proposed work). SEE RULE 19.15.7.14 NMAC. For Multiple Completions: Attach wellbore diagram of proposed completion or recompletion.

Based on the results of the workover of the Linam AGI #1 in May 2012, DCP and OCD-Hobbs have determined that a MIT should be conducted every six months until the well is repaired by adding a stacked packer to confirm that no communication exists between the well tubing and the annular space in the well (the annular space being inside the 7" casing) and that the portion of compromised casing above the current packer is maintaining its integrity.

The MIT will be conducted on November 14, 2012. In order to conduct the MIT, the annular space pressure will be adjusted to 500 psi by either adding or bleeding a small amount of corrosion inhibited diesel immediately before the test

1. Initially the starting annular space pressure in 7" casing and tubing injection pressure will be recorded and both will be monitored during the test.
2. Bleed off or add annular fluid (corrosion inhibited diesel) as needed to bring observed annular space pressure to 0 psig.
3. Slowly raise annular pressure by introducing corrosion inhibited diesel to annulus to 500 psig
4. Place chart on annular space and record annular space pressure for one half hour.
5. Record average tubing injection pressure during charting.
6. Bleed off annular fluid as needed to reduce observed pressure to approximately 100 psig.

Geolex, Inc. and Pate Trucking/Hobbs will be conducting the test. We will meet at the Linam AGI facility west of Hobbs at 9am Wednesday 11/14/2012 and will hold a tailgate safety meeting upon arrival at the well location. A wellbore diagram is attached. Please advise concurrence with procedure.

I hereby certify that the information above is true and complete to the best of my knowledge and belief.

SIGNATURE

Type or print name

Alberto A. Gutierrez

TITLE: Consultant to DCP Midstream LP

E-mail address: [aa@geolex.com](mailto:aa@geolex.com)

DATE: 10/25/2012

PHONE: 505-842-8000

For State Use Only

APPROVED BY:

TITLE

DATE

Conditions of Approval (if any):

OCT 29 2012

RECEIVED

OCT 29 2012

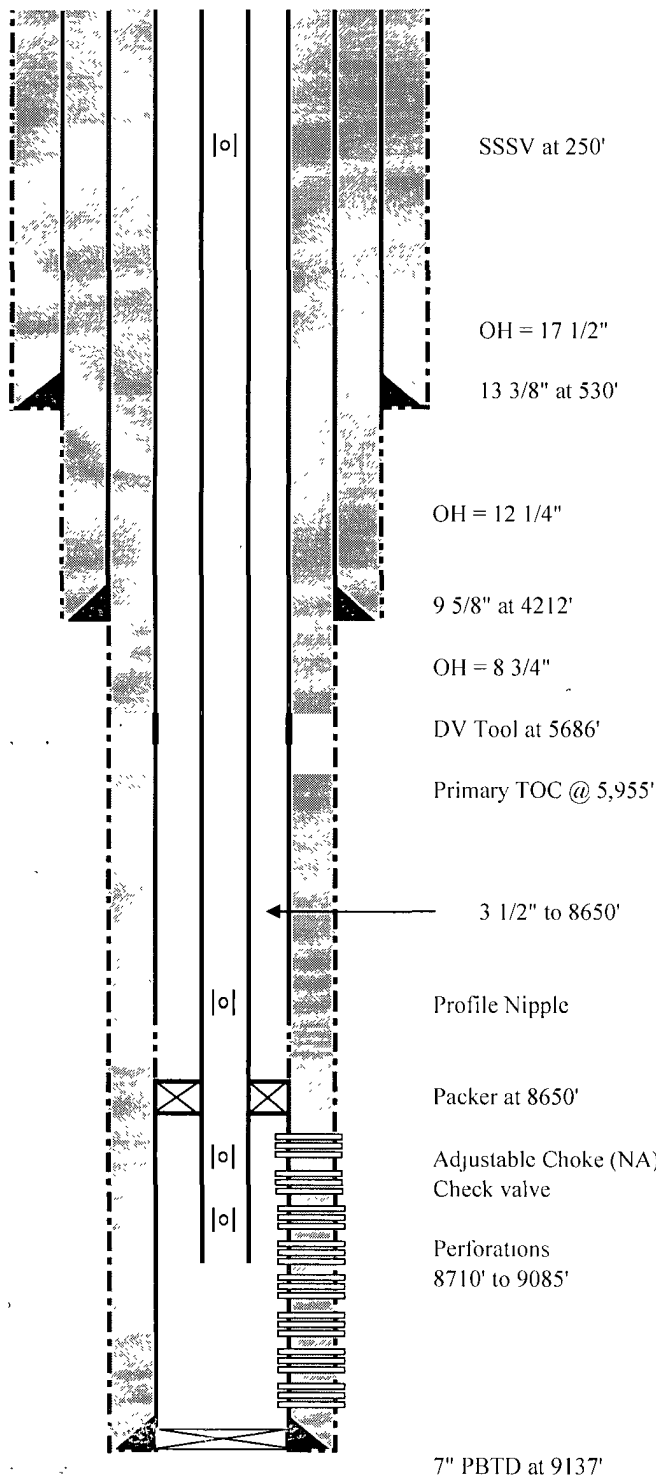
HOBBS

Location: 1980' FSL, 1980' FWL

STR 30-T18S-R37E

County, St.: LEA, NEW MEXICO

DCP LINAM AGI #1  
WELLBORE SCHEMATIC



TD: 9213'

**SURFACE CASING:**

13 3/8", 48.00#/ft, H40, STC at 530'

**INTERMEDIATE CASING:**

9 5/8", 40.00#/ft, J55, LTC at 4212'

**PRODUCTION CASING:**

7", 26.00#/ft, L80, STC at 9200'

PBTD = 9137'

**TUBING:**

Subsurface Safety Valve at 250 ft

3 1/2", 9.2#/ft, L80, Hunting SLF at 8650'

**PACKER:**

Permanent Production Packer

Adjustable Choke

Check valve

**PACKER FLUID (CORROSION INHIBITED):**

Diesel w/ Cortron R-2525 (Corrosion inhibitor and oxygen scavenger)

**PERFORATIONS:**

Primary Target	Secondary Target
Lower Bone Springs	Brushy Canyon
8710' - 8730'	5000' to 5300'
8755' - 8765'	(Not perforated)
8780' - 8795'	
8780' - 8890'	
8925' - 8930'	
8945' - 8975'	
8985' - 9000'	
9045' - 9085'	