

Submit 3 Copies To Appropriate District Office
District I
1625 N French Dr., Hobbs, NM 88240
District II
1301 W. Grand Ave., Artesia, NM 88210
District III
1000 Rio Brazos Rd., Aztec, NM 87410
District IV
1220 S. St. Francis Dr., Santa Fe, NM 87505

HOBBS OCD

State of New Mexico
Energy, Minerals and Natural Resources

Form C-103

June 19, 2008

OCT 29 2012

RECEIVED

OIL CONSERVATION DIVISION
1220 South St. Francis Dr.
Santa Fe, NM 87505

WELL API NO. 30-025-07230
5. Indicate Type of Lease STATE <input type="checkbox"/> FEE <input checked="" type="checkbox"/>
6. State Oil & Gas Lease No.
7. Lease Name or Unit Agreement Name L W Ward
8. Well Number 001
9. OGRID Number 873
10. Pool name or Wildcat Bronco; Wolfcamp (7600)

SUNDRY NOTICES AND REPORTS ON WELLS (DO NOT USE THIS FORM FOR PROPOSALS TO DRILL OR TO DEEPEN OR PLUG BACK TO A DIFFERENT RESERVOIR. USE "APPLICATION FOR PERMIT" (FORM C-101) FOR SUCH PROPOSALS)	
1. Type of Well: <input checked="" type="checkbox"/> Oil Well <input type="checkbox"/> Gas Well <input type="checkbox"/> Other:	
2. Name of Operator Apache Corporation	
3. Address of Operator 303 Veterans Airpark Lane, Suite 3000 Midland, TX 79705	
4. Well Location Unit Letter O : 660 feet from the South line and 1491 feet from the East line Section 11 Township 13S Range 38E NMPM County Lea	
11. Elevation (Show whether DR, RKB, RT, GR, etc.) 3809' GL	

12. Check Appropriate Box to Indicate Nature of Notice, Report or Other Data

NOTICE OF INTENTION TO:

PERFORM REMEDIAL WORK ☐ PLUG AND ABANDON ☐
TEMPORARILY ABANDON ☐ CHANGE PLANS ☐
PULL OR ALTER CASING ☐ MULTIPLE COMPL ☐
DOWNHOLE COMMINGLE ☐

SUBSEQUENT REPORT OF:

REMEDIAL WORK ☐ ALTERING CASING ☐
COMMENCE DRILLING OPNS. ☐ P AND A ☐
CASING/CEMENT JOB ☐

OTHER: ☐

OTHER: RECOMPLETE

☒

13. Describe proposed or completed operations. (Clearly state all pertinent details, and give pertinent dates, including estimated date of starting any proposed work). SEE RULE 1103. For Multiple Completions: Attach wellbore diagram of proposed completion or recompletion.

Apache recompleted this well, as follows:

7/19/2012 MIRUSU Set CBP @ 9520'. Perf Wolfcamp @ 9428'-9435' w/3 SPF, 24 holes. SWI

7/30/2012 MIRUSU 7/31/2012 RIH w/WS tbg.

8/01/2012 Attempt to break down perfs; tbg & csg communicated. POOH w/tbg & pkr.

8/02/2012 RU tbg testers; test in hole w/treating pkr. RU pump truck; pressure csg to 600 psi; held. RD pump truck.

8/03/2012 Acidize Wolfcamp w/3000 gal 15% HCL acid.

8/04/2012 Swab 8/05/2012 No activity.

8/06/2012 Swab. Release pkr; circulate out.

8/07/2012 POOH w/tbg & pkr.

8/08/2012 RU tbg testers; test in hole. 8/09/2012 Continue testing. 8/10/2012 RDMOSU

8/11-16/2012 No activity - WO frac tanks.

8/17/2012 Run fast line from water well to frac tanks. 8/20/2012 Fill frac tanks.

(continued on next page)

Spud Date:

04/07/1953

Rig Release Date:

07/03/1953

I hereby certify that the information above is true and complete to the best of my knowledge and belief.

SIGNATURE

Reesa Holland

TITLE Sr. Staff Reg Tech

DATE 10/24/2012

Type or print name Reesa Holland

E-mail address: Reesa.Holland@apachecorp.com

PHONE: 432/818-1062

For State Use Only

APPROVED BY

[Signature]

TITLE

Dist. Mgr

DATE

11-1-2012

Conditions of Approval (if any):

8/3/12

LA Bronco Siluro Devonian

NOV 01 2012

L W Ward #1
API 30-025-07230
Apache Corp. (873)

Recompletion Continued – Page 2

8/22/2012 Pump 2000 gal 15% acid. Pump 232 bbls PAD & 42,421# white 20/0 sand & 27,558# 20/40 Super LC sand.

8/23/2012 Open well to tank - well on vacuum. 8/27/2012 Attempt to unset frac pkr; wouldn't unset. Unlatch On/Off Tool.

8/28/2012 LD WS tbg & pkr. 8/30/2012 POOH w/WS tbg & tools. 8/31/2012 Jar pkr loose @ 9306'. POOH w/tbg & tools.

9/04/2012 RIH w/prod equip; wash down to 9528'; tag CBP @ 9528'; circ clean.

9/05/2012 Cut over the CBP @ 9528', continue in hole & tag @ 11,535'; circ clean. Start POOH & LD tbg.

9/06/2012 Finish LD tbg.

9/07/2012 RIH w/additional prod equip.

9/10/2012 Finish PU tbg.

9/11-12/2012 Swab

9/13/2012 RIH w/ESP equipment; set Intake @ 9358' w/bottom of motor @ 9390'. Could not get drive to run; Pulling too many amps.

9/14/2012 Well on test – POP.

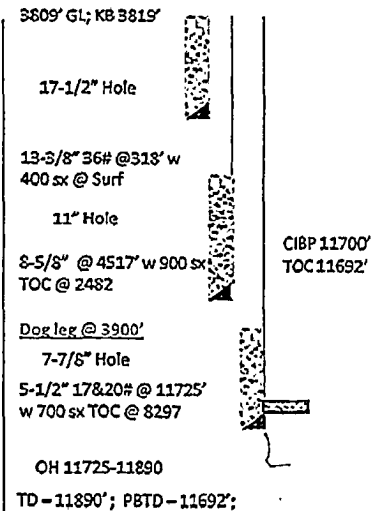
LW Ward #1 – ESP

660' FSL & 1491' FEL, Sec. 11, Blk J, Surv J.H. Gibson
T:13S, R:38, Lea County NM
API 30-025-07230
WI - 67.44% - Spud Date - 4-7-53

Well History

Date	Event
7-3-53	Initial completion 1000 gal MCA 1bpm @ 3800#
11-1-69	Put on Rods
5-18-81	Put on ESP
Mar-03	AFE to pull ESP due to shorted motor
9-24-05	Acidize OH 8000 gal fercheck & 12000 gal guidon water web (3 stages)
11-21-05	TA all water CIBP @ 11700 w TOC @ 11692'
4-18-06	Perf 11601-80, Acidize 2000 gal 15% w Antisludge, sqz csg lk, Install sub and change to rods.
2-14-07	Tubing leak
6-26-08	Tubing Leak
8-11-08	Tubing Leak
10-23-08	Tubing Leak
3-25-09	Rod part – tagging
7-15-09	Rod Part
8-25-09	Rod Part
5-21-10	Rod Part
7-20-10	Rod Part
8-26-10	Convert to ESP – Notes severe dog leg @ 3900' – Land ESP w/ intake @ 10448'.
Mar-05	AFE to move Bronco SWD to Weem surface site (400') due to lease expire. Weems lease to be at \$10K/year for 10 years

Well Bore Diagram



Perf Data

7-3-53 OH 11725-11890'
4-18-06 6JSPF 11601-09, 11673-80 (14S shots)

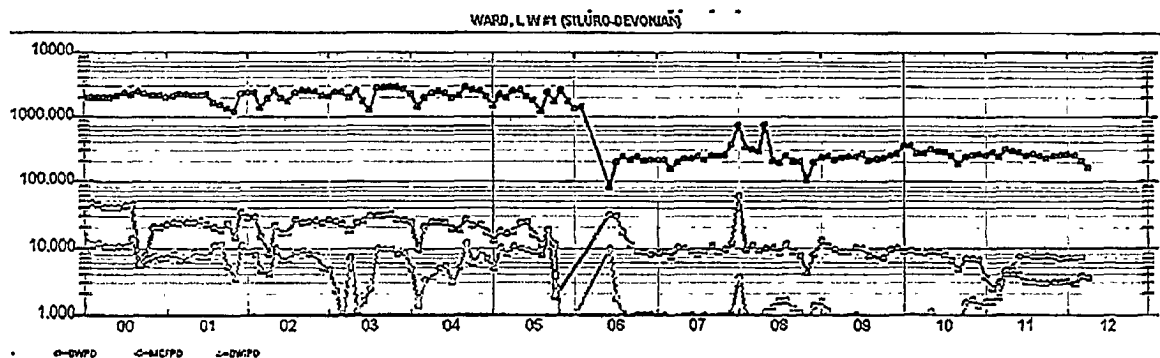
Well file has structure map with offsets showing fault location

OST Results

Penn 9417-9418' – Gas to surf 20 min. Water blanket and mud in 3 hr 47 min. Oil in 4 hr 24 min. Flow 45 BO/hr (tool open 5 hr 24 min)
Penn 9632-9640' – Good blow died 37 min. Recover 313' water blanket, 94' water blanket w/ 1% cut. 219' mud w trace oil and gas, 94' mud gas and water. (tool open 1 hr 37 min)
Penn 10314-10321' – Weak blow died in 52 min. Recover 62' mud w 3% oil, 1755' gas cut water and 218' mud cut gas w 1% oil. (Tool open – 1 hr 52 min)
Devonian 11520-11528' – Weak to good blow. No oil or gas to surf. Recover 3069' oil with 35% water, 42.2 API, 930' gas w 80% water and 20% mud. 935' mud and water blanket. No show of water from formation (Tool open 4 hr)

Last Test

1-2-12 3 BOPD x 255 BWPD x 8 MCFD



Created By R. Hale – 1/22/12

Last Rev By -