

**District I**  
1625 N French Dr., Hobbs, NM 88240  
Phone (575) 393-6161 Fax (575) 393-0720  
**District II**  
811 S First St., Artesia, NM 88210  
Phone (575) 748-1283 Fax (575) 748-9720  
**District III**  
1000 Rio Brazos Road, Aztec, NM 87410  
Phone (505) 334-6178 Fax (505) 334-6170  
**District IV**  
1220 S St. Francis Dr., Santa Fe, NM 87505  
Phone (505) 476-3460 Fax (505) 476-3462

State of New Mexico

Form C-101  
Revised October 25, 2012

**Oil Conservation Minerals and Natural Resources**

**Oil Conservation Division**

☐ AMENDED REPORT

NOV 01 2012  
220 South St. Francis Dr.

Santa Fe, NM 87505

RECEIVED

**APPLICATION FOR PERMIT TO DRILL, RE-ENTER, DEEPEN, PLUGBACK, OR ADD A ZONE**

<sup>1</sup> Operator Name and Address COG OPERATING LLC 2208 West Main Street, Artesia, NM 88210		<sup>2</sup> OGRID Number 217955
		<sup>3</sup> API Number 30-025-40845
<sup>4</sup> Property Code 39530	<sup>5</sup> Property Name Eata Fajita 8 State SWD	<sup>6</sup> Well No 1

**7. Surface Location**

UL - Lot	Section	Township	Range	Lot Idn	Feet from	N/S Line	Feet From	E/W Line	County
F	8	24S	33E		2310	FNL	2310	FWL	Lea

**8. Proposed Bottom Hole Location**

UL - Lot	Section	Township	Range	Lot Idn	Feet from	N/S Line	Feet From	E/W Line	County

**9. Pool Information**

SWD; Delaware	96100
---------------	-------

**Additional Well Information**

<sup>11</sup> Work Type New Well	<sup>12</sup> Well Type SWD	<sup>13</sup> Cable/Rotary	<sup>14</sup> Lease Type State	<sup>15</sup> Ground Level Elevation 3611'
<sup>16</sup> Multiple N	<sup>17</sup> Proposed Depth 7500	<sup>18</sup> Formation Delaware Sand	<sup>19</sup> Contractor	<sup>20</sup> Spud Date 11/5/2012
Depth to Ground water		Distance from nearest fresh water well		Distance to nearest surface water

**21. Proposed Casing and Cement Program**

Type	Hole Size	Casing Size	Casing Weight/ft	Setting Depth	Sacks of Cement	Estimated TOC
Surface	17.5	13.375	54.5	1250	825	0
Intrmd	12.25	9.625	40	5400	1250	0
Open Hole	8.75	-	-	7500	-	-

**Casing/Cement Program: Additional Comments**

Plan to drill a 17-1/2" hole to 1250' with Fresh Water. Run 13-3/8", 54.5#, J-55 csg and cmt to surface. Drill 12-1/4" hole to 5400' with Brine, and run 9-5/8", 40#, J55/N80 and cement to surface in 1 stage. Drill 8-3/4" hole to 7500' with cut-brine and leave open for a Delaware Sand salt water disposal.

**22. Proposed Blowout Prevention Program**

Type	Working Pressure	Test Pressure	Manufacturer
Double Ram	3000	3000	Cameron

**Permit Expires 2 Years From Approval Date Unless Drilling Underway**

<sup>23</sup> I hereby certify that the information given above is true and complete to the best of my knowledge and belief  
I further certify that I have complied with 19.15.14.9 (A) NMAC ☐ and/or 19.15.14.9 (B) NMAC ☐, if applicable.

Signature *Mayte Reyes*

Printed name. Mayte Reyes

Title: Regulatory Analyst

E-mail Address: mreyes1@concho.com

Date: 10/30/2012

Phone: 575-748-6945

**OIL CONSERVATION DIVISION**

Approved By: *[Signature]*

Title: *Dist. MGR*

Approved Date: 11-1-2012

Expiration Date: 11-1-2014

Conditions of Approval Attached

HOBBS OCD

DISTRICT I  
1625 N. French Dr., Hobbs, NM 88240  
Phone (575) 393-6161 Fax (575) 393-0720

DISTRICT II  
811 S. First St., Artesia, NM 88210  
Phone (575) 748-1283 Fax (575) 748-9720

DISTRICT III  
1000 Rio Brazos Road, Aztec, NM 87410  
Phone (505) 334-6178 Fax (505) 334-6170

DISTRICT IV  
1220 S. St. Francis Dr., Santa Fe, NM 87505  
Phone (505) 476-3460 Fax (505) 476-3462

NOV 01 2012 State of New Mexico  
Energy, Minerals & Natural Resources Department  
OIL CONSERVATION DIVISION  
RECEIVED 1220 South St. Francis Dr.  
Santa Fe, New Mexico 87505

Form C-102  
Revised August 1, 2011  
Submit one copy to appropriate  
District Office

☐ AMENDED REPORT

### WELL LOCATION AND ACREAGE DEDICATION PLAT

API Number <b>30-025-40845</b>	Pool Code <b>96100</b>	Pool Name <b>SWD; Delaware</b>
Property Code <b>39530</b>	Property Name <b>EATA FAJITA 8 STATE SWD</b>	Well Number <b>1</b>
OGRID No <b>217955</b>	Operator Name <b>COG Production LLC</b>	Elevation <b>3611</b>

#### Surface Location

UL or lot No	Section	Township	Range	Lot Idn	Feet from the	North/South line	Feet from the	East/West line	County
F	8	24-S	33-E		2310	NORTH	2310	WEST	LEA

#### Bottom Hole Location If Different From Surface

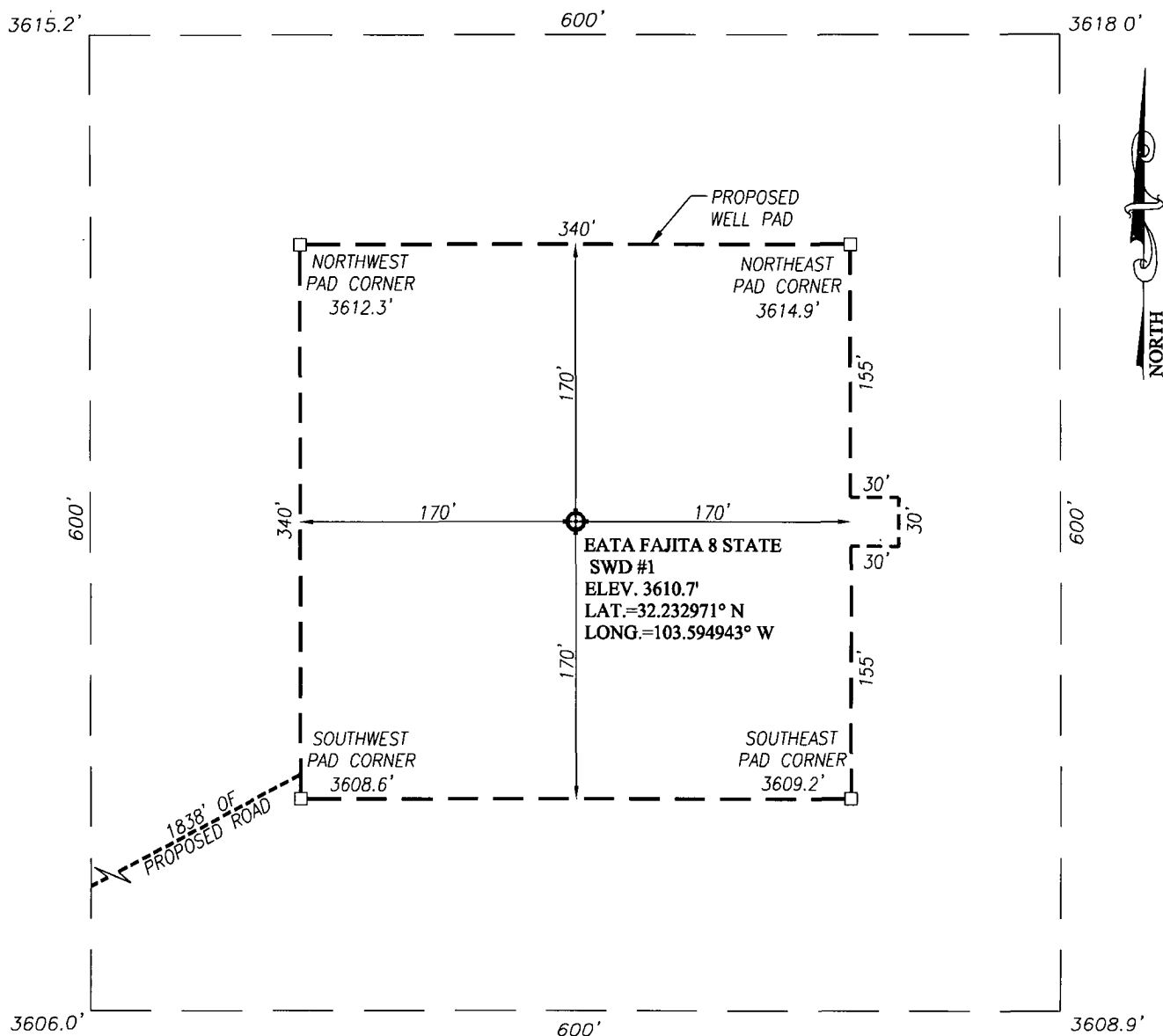
UL or lot No	Section	Township	Range	Lot Idn	Feet from the	North/South line	Feet from the	East/West line	County
Dedicated Acres <b>80</b>	Joint or Infill	Consolidation Code	Order No <b>SWD-1361</b>						

NO ALLOWABLE WILL BE ASSIGNED TO THIS COMPLETION UNTIL ALL INTERESTS HAVE BEEN CONSOLIDATED OR A NON-STANDARD UNIT HAS BEEN APPROVED BY THE DIVISION

<p>STATE</p> <p>2310'</p> <p>S.L.</p> <p>SEE DETAIL</p> <p>DETAIL</p> <p>3615.2' 3618.0'</p> <p>600'</p> <p>3606.0' 3608.9'</p> <p>GEODETIC COORDINATES NAD 27 NME</p> <p>SURFACE LOCATION Y=449258.3 N X=728319.3 E</p> <p>LAT.=32.232971° N LONG.=103.594943° W</p>	<p><b>OPERATOR CERTIFICATION</b></p> <p>I hereby certify that the information herein is true and complete to the best of my knowledge and belief, and that this organization either owns a working interest or unleased mineral interest in the land including the proposed bottom hole location or has a right to drill this well at this location pursuant to a contract with an owner of such mineral or working interest, or to a voluntary pooling agreement or a compulsory pooling order heretofore entered by the division.</p> <p><i>Melanie J. Parker</i> 10/30/12 Signature Date</p> <p>Melanie J. Parker Printed Name</p> <p>mparker@concho.com E-mail Address</p>
	<p><b>SURVEYOR CERTIFICATION</b></p> <p>I hereby certify that the well location shown on this plat was plotted from field notes of actual surveys made by me or under my supervision, and that the same is true and correct to the best of my belief.</p> <p>OCTOBER 2, 2012</p> <p>Date of Survey</p> <p><i>Ronald J. Eidson</i> Signature of Professional Surveyor</p> <p>NEW MEXICO 3239 REGISTERED SURVEYOR</p> <p><i>Ronald J. Eidson</i> 10/09/2012 Certificate Number</p> <p>BKL JWSC W O 12 11.1647</p>

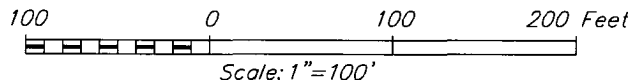
ELG 11-1-2012

**SECTION 8, TOWNSHIP 24 SOUTH, RANGE 33 EAST, N.M.P.M.**  
**LEA COUNTY** **NEW MEXICO**



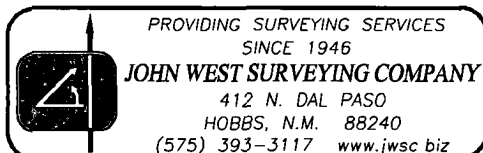
**DIRECTIONS TO LOCATION**

FROM THE INTERSECTION OF STATE HIGHWAY 128 AND BRINSTOOL ROAD, GO WEST APPROX 1.6 MILES; TURN RIGHT AND GO NORTHWEST APPROX 1.3 MILES; TURN RIGHT AND GO NORTHEAST APPROX 0.3 MILES TO EXISTING WELL PAD (EATA FAJITA STATE #3H) BEGIN ROAD LATH IS ON THE NORTHEAST PAD CORNER. FOLLOW ROAD SURVEY LATH NORTHEAST 1838 FEET TO THIS LOCATION.



**COG PRODUCTION LLC**

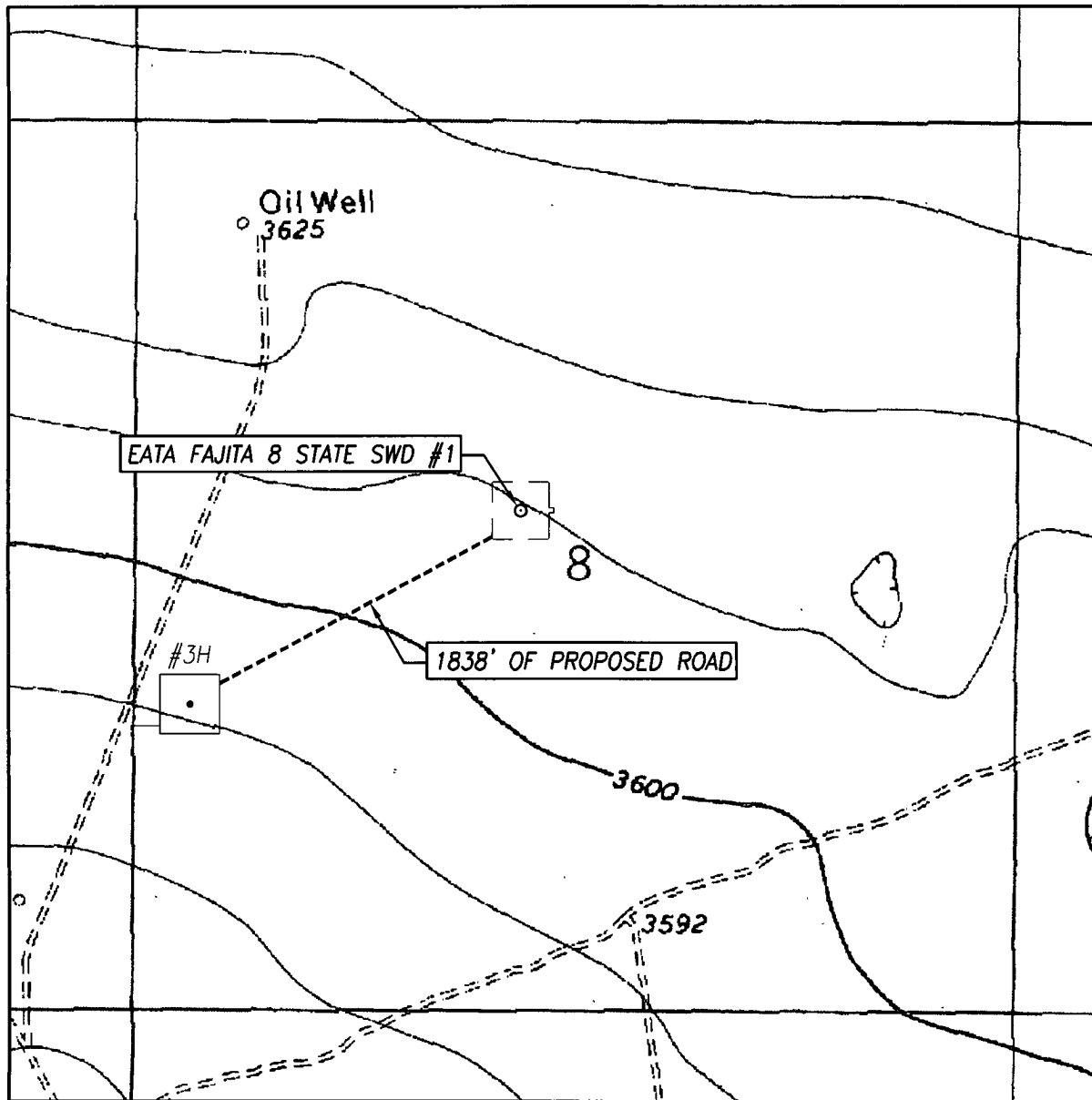
**EATA FAJITA 8 STATE SWD #1 WELL  
 LOCATED 2310 FEET FROM THE NORTH LINE  
 AND 2310 FEET FROM THE WEST LINE OF SECTION 8,  
 TOWNSHIP 24 SOUTH, RANGE 33 EAST, N.M.P.M.,  
 LEA COUNTY, NEW MEXICO**



Survey Date: 10/2/12	CAD Date: 10/8/12	Drawn By: BKL
W.O. No.: 12111647	Rev:	Rel. W.O.:

Sheet 1 of 1

# LOCATION VERIFICATION MAP



SCALE: 1" = 1000'

CONTOUR INTERVAL:  
BELL LAKE, N.M. - 10'

SEC. 8 TWP. 24-S RGE 33-E

SURVEY \_\_\_\_\_ N.M.P.M.

COUNTY LEA STATE NEW MEXICO

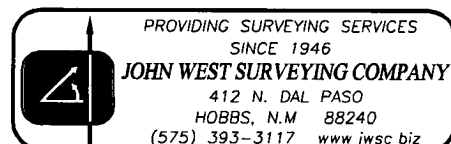
DESCRIPTION 2310' FNL & 2310' FWL

ELEVATION 3611'

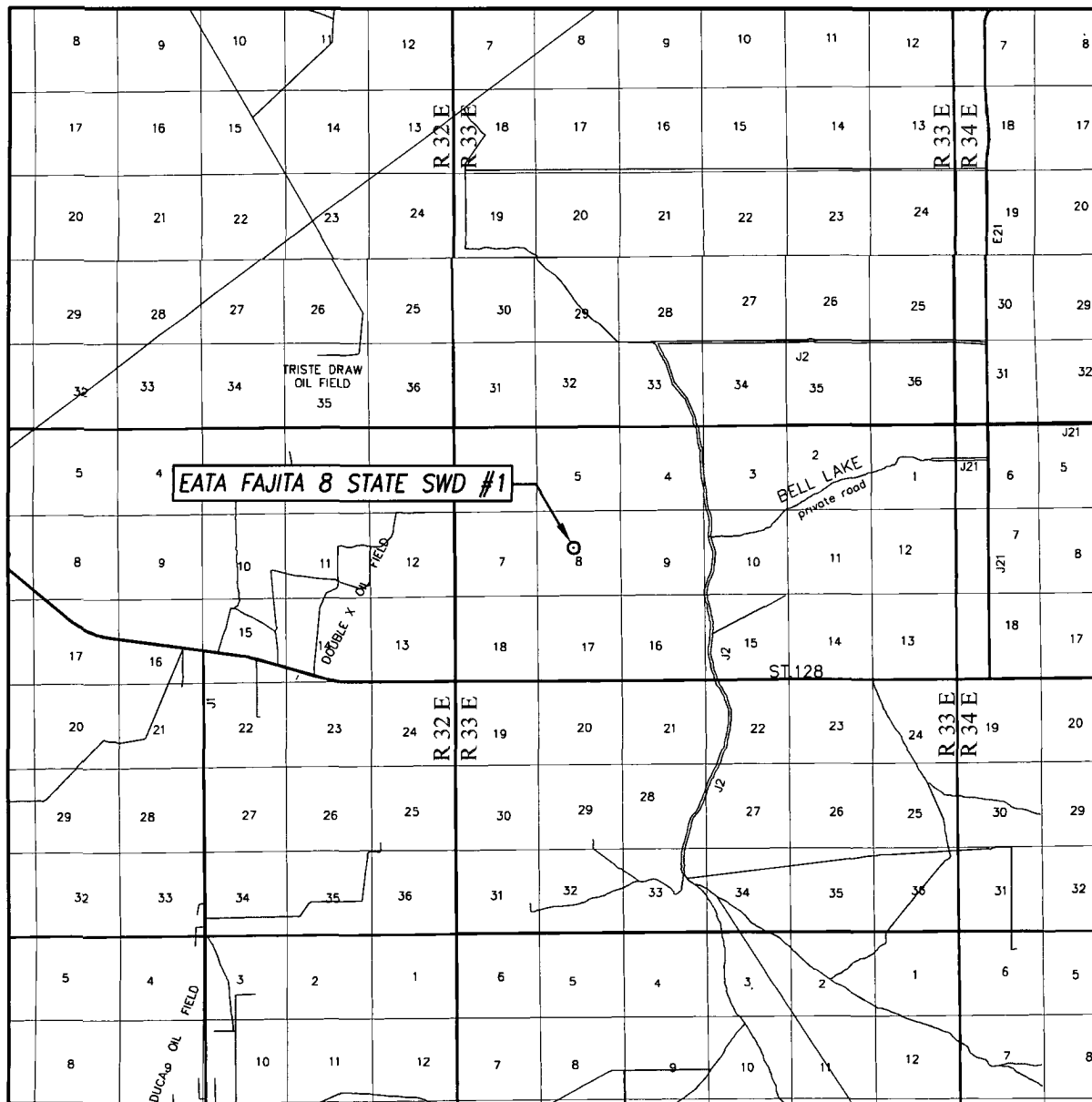
OPERATOR COG PRODUCTION LLC

LEASE EATA FAJITA 8 STATE

U.S.G.S. TOPOGRAPHIC MAP  
BELL LAKE, N.M.



# VICINITY MAP



SCALE: 1" = 2 MILES

SEC. 8 TWP. 24-S RGE. 33-E

SURVEY N.M.P.M.

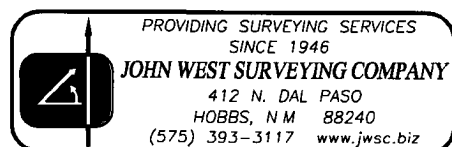
COUNTY LEA STATE NEW MEXICO

DESCRIPTION 2310' FNL & 2310' FWL

ELEVATION 3611'

OPERATOR COG PRODUCTION LLC

LEASE EATA FAJITA 8 STATE



## **Eata Fajita 8 State SWD 1**

	<b>Hole</b>					
	<b>Size</b>	<b>Casing</b>	<b>Wt</b>	<b>Depth</b>	<b>Cmt</b>	<b>TOC</b>
<b>Surface</b>	<b>17.5</b>	<b>13.375</b>	<b>54.5</b>	<b>1250'</b>	<b>825</b>	<b>0</b>
<b>Intrmd</b>	<b>12.25</b>	<b>9.625</b>	<b>40</b>	<b>5400'</b>	<b>1250</b>	<b>0</b>
<b>Open Hole</b>	<b>8.75</b>	<b>-</b>	<b>-</b>	<b>7500'</b>	<b>-</b>	<b>-</b>

Plan to drill a 17-1/2" hole to 1250' with Fresh Water. Run 13-3/8", 54.5#, J-55 csg and cmt to surface. Drill 12-1/4" hole to 5400' with Brine, and run 9-5/8", 40#, J55/N80 and cement to surface in 1 stage. Drill 8-3/4" hole to 7500' with cut-brine and leave open for a Delaware Sand salt water disposal.

## **Well Control**

<b>Type</b>	<b>Pressure</b>	<b>Test</b>	<b>Manufacture</b>
<b>Double Ram</b>	<b>3000</b>	<b>3000</b>	<b>Cameron</b>