

District I - (575) 393-6161
1625 N. French Dr., Hobbs, NM 88240
District II - (575) 748-1283
811 S. First St., Artesia, NM 88210
District III - (505) 334-6178
1000 Rio Brazos Rd., Aztec, NM 87410
District IV - (505) 476-3460
1220 S. St. Francis Dr., Santa Fe, NM 87505

State of New Mexico
Energy, Minerals and Natural Resources

Form C-103
October 13, 2009

HOBBS OGD

OCT 12 2012

OIL CONSERVATION DIVISION

1220 South St. Francis Dr.

Santa Fe, NM 87505

RECEIVED

WELL API NO. <input checked="" type="checkbox"/> 30-025-20692
5. Indicate Type of Lease STATE <input type="checkbox"/> FEE <input type="checkbox"/> FED <input checked="" type="checkbox"/>
6. State Oil & Gas Lease No.
7. Lease Name or Unit Agreement Name MESCALERO RIDGE UNIT <input checked="" type="checkbox"/>
8. Well Number: 354 <input checked="" type="checkbox"/>
9. OGRID Number 269324 <input checked="" type="checkbox"/>
10. Pool name or Wildcat PEARL;QUEEN

SUNDRY NOTICES AND REPORTS ON WELLS
(DO NOT USE THIS FORM FOR PROPOSALS TO DRILL OR TO DEEPEN OR PLUG BACK TO A DIFFERENT RESERVOIR USE "APPLICATION FOR PERMIT" (FORM C-101) FOR SUCH PROPOSALS)

1. Type of Well: Oil Well ☐ Gas Well ☒ Other **INJECTION**

2. Name of Operator
LINN OPERATING, INC.

3. Address of Operator
600 TRAVIS, SUITE 5100, HOUSTON, TEXAS 77002

4. Well Location
Unit Letter G; 1980 feet from the N line and 1980 feet from the E line
Section 35 Township 19S Range 34E NMPM LEA County

11. Elevation (Show whether DR, RKB, RT, GR, etc.)
3724' KB

12. Check Appropriate Box to Indicate Nature of Notice, Report or Other Data

NOTICE OF INTENTION TO:

PERFORM REMEDIAL WORK ☐ PLUG AND ABANDON ☐
TEMPORARILY ABANDON ☐ CHANGE PLANS ☐
PULL OR ALTER CASING ☐ MULTIPLE COMPL ☐
DOWNHOLE COMMINGLE ☐

SUBSEQUENT REPORT OF:

REMEDIAL WORK ☒ ALTERING CASING ☐
COMMENCE DRILLING OPNS. ☐ P AND A ☐
CASING/CEMENT JOB ☐

OTHER: ☐

OTHER: **RETURN TO INJECTION** ☒

13. Describe proposed or completed operations. (Clearly state all pertinent details, and give pertinent dates, including estimated date of starting any proposed work). SEE RULE 19.15.7.14 NMAC. For Multiple Completions: Attach wellbore diagram of proposed completion or recompletion.

PLEASE SEE ATTACHMENT

Spud Date:

Rig Release Date:

I hereby certify that the information above is true and complete to the best of my knowledge and belief.

SIGNATURE

Terry B. Callahan

TITLE: REGULATORY SPECIALIST III DATE OCTOBER 11, 2012

Type or print name TERRY B. CALLAHAN

E-mail address: tcallahan@linenergy.com

PHONE: 281-840-4272

For State Use Only

APPROVED BY:

[Signature]

TITLE

Dist. MGR

DATE 11-7-2012

Conditions of Approval (if any):

MESCALERO RIDGE UNIT 354

API# 30-025-20692

ATTACHMENT TO SUBSEQUENT REPORT

7-24-2012 - OCD FAILED MIT DUE TO CSG LEAK @ 900' IN APRIL.

9-10-2012 – WO REGULATORY

9-11-2012 - MIRUPU; NDWH; NU BOP AND CATCH PAN; WO WS. TIH W/ 4 3/4" BIT, BIT SUB, ON 2 3/8" WS TO 4265'.

9-12-2012 - BLEED PRESSURE OFF WELL INTO VAC TRUCK; TIH W/TBG. TAG @ 4698' TD 5203'; RU SWIVEL BREAK CIRC. START DRILLING @ 4698' DRILL TO 4699' IRON SULFIDE AND STEEL CUTTINGS COMING BACK. CIRC. HOLE, CLEAN; POH W/ TBG AND BIT SUB, 4 3/4" BIT.

9-13-2012 - RIH W/ 4 3/16" CSG SWEDGE-JARS BUMPER SUB (6) 3 1/2" DC'S EXCELARATOR SUB ON 2 3/8" J-55 TBG TO 4698' START WORKING SWEDGE THROUGH TIGHT SPOT. STUCK @ 4702' AND JARS NOT WORKING; WORK STUCK SWEDGE. SWEDGE CAME LOOSE; POH W/ TBG AND TOOLS. LD TOOLS.

9-14-2012 – RIH W/ 5-1/2" PKR ON 2-3/8" WS 142 JTS TO 4535' SET PKR. RU PUMP TRUCK. LOAD BACKSIDE W/ 20 BBLs WTR. PUMPED TOTAL OF 218 BBLs WTR. FLOWED, START BLEEDING WELL BACK TO TRUCK 1-1/2 BBL/MIN FLOWED 42 BBLs. CHANGE TO REVERSE PIT. FLOWED 100 BBLs, SI. HOOK UP FLOW LINE TO WATER STATION; OPEN WELL FLOWING TO WATER STATION. SHUT DOWN RIG. LEFT WELL FLOWING BACK TO TANK.

9-17-2012 - BLEED PRESSURE OFF. POH W/ 140 JTS TBG AND PKR; DRIFT AND TALLY 4" CSG. FOUND 3 BAD JTS CSG. WOULD NOT DRIFT TIGHT SPOTS TOTAL GOOD PIPE 4477.60' NEED 4468'. GETTING 3 JTS. RU WIRELINE TRK. RIH W/ COMPOSITE PLUG TO 4503' SET PLUG. DUMP 10' CEMENT ON TOP OF PLUG. POH WIRELINE. RIH W/ 5 1/2" PKR ON 2 3/8" WS TO 4464' SET PKR. WAITING ON BRINE WASTER TO TEST PLUG AND CIRC HOLE.; RU PUMP TRK TEST COMPOSITE PLUG 500 PSI. HELD OK. RLSE PKR CIRC HOLE W/ BRINE WATER. 100 BBLs; POH 2 2 3/8" WS AND 5 1/2" PKR. SIDS

9-18-2012 – RD CATCH PAN & BOP. NUBOP & CATCH PAN. CHANGED OUT BOTTOM BOWL FOR 4" LINER. RU CSG CREW, PU CASING SHOE & FLOAT COLLAR. RIH W/ 101 JTS, TAG UOP @ 4494' PU 5' TO 4489', RD CSG CREW SHOE @ 4489', COLLAR @ 4444'. RU CEMENT TRUCK, TEST LINES TO 50003. PUMP 10 BBLs WTR. START CMT PUMP 42 BBLs. CMT 14.8 SLURRY, DISPLACE 50.7 BBLs WTR. BUMPED PLUG @ 5000#. CIRC 5 BBLs CMT. SIDS

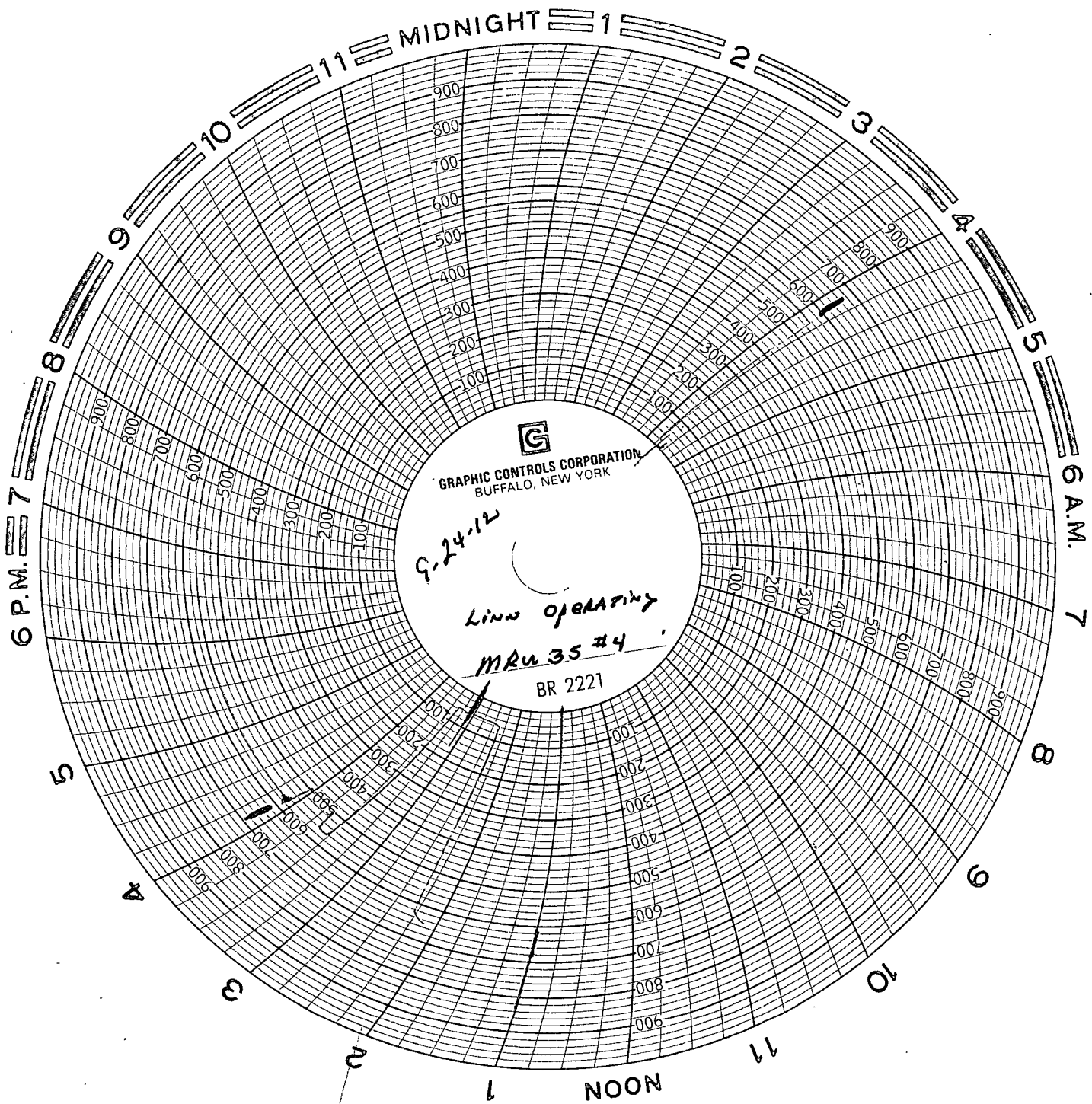
9-19-2012 – BLEED PRESSURE OFF CSG, RD FLOOR & CATCH PAN. NDBOP, PULL 60 PTS SET SLIPS NUWH 5-1/2, WELDER CUT 4" CSG OFF. WELD ON BELL NIPPLE. NUBOP & CATCH PAN. PUT RIG FLOOR BACK DOWN. RIH W/ 3-1/4" BIT, 6 – 2-1/4 DC'S ON 2-3/8" WS TAG @ 4440'. RU POWER SWIVEL, BREAK CIRC, DRILL TO 4489', CIRC CLEAN. SIDS

9-20-2012 - RU SWIVEL BREAK CIRC, DRILL FROM 4489' THRU COMPOSIT @ 4503' CIRC HOLE CLEAN. RD SWIVEL; LOWER BIT TO 4698' TA. TIGHT SPOT; POH W/ 2 3/8" WS 141 FTS, (6) 3 1/4" DC'S, 3 1/4" BIT. RIH W/ 4" AS1X TREATING PKR ON 2 3/8" WS TO 4463' SET PKR. SIDS

9-21-2012 - ACIDIZE PERFS W/ 1000 GAL 15% NE / FE ACID @ 2.3 BPM; AVG PRESSURE 1900# PSI; PUMP 40 BBLs. FLUSH ISIP 1500# PSI; MAX RATE 1959# PSI AVG 2.3 BPM; SITP, 1100 OPENED WELL, FLOWED BACK 70 BBLs, LOAD RELEASED PKR POH LD 145 JTS OF WS. SIDS

9-24-2012 - RIH W/ NEW D&L 4" 10.43-12.95 ASIX NICKEL PLATED INJ PKR W/ 4"X1.50 F ON-OFF TOOL. & 100 JTS 2 3/8 IPC TBG. LOAD TBG W/ 10 BBLs PKR SET @ 4427' GOT OFF OF ON-OFF TOOL & CIRC 50 BBLs WATER MIXED W/ 10 GAL PKR FLUID. LATCH BACK ON PKR; RD FLOOR, ENVIR PAN & BOP. NU WH. RU KILL TRUCK TESTED CSG. TO 560 PSI FOR 30 MIN HELD OK. TIE ONTO TBG. PRESS UP TO PUMP OUT PLUG. OK;

MAXEY BROWN WITH THE OCD GAVE PERMISSION TO RUN MIT TEST WITHOUT HIM BEING PRESENT, MIT PASSED 530 PSI; RETURN TO INJECTION. ORIGINAL MIT CHART ATTACHED



Arapahoe oil field Service.

Ticket #90

Calibrated - 0-1000# 4-16-12

Ronnie Autrey

START - 560#
FINAL - 560#
TIME - 30 MIN.

POST WORK OVER
30-025-20692
1980 FNL & 1980 FEL
S-35 T-195 R-34E

Tony R. Indgrass
Indgrass Packers
Service

Harry W. Wink SPOKE TO
OCD - MAXEY BROWN
DK TO RUN TEST - NOT WITNESSED