

HOBBS OGD

NOV 02 2012

DISTRICT I

1025 N. French Dr., Hobbs, NM 88240
Phone (505) 893-0101 Fax: (505) 393-0720

DISTRICT II

811 S. First St., Artesia, NM 88210
Phone (505) 740-1283 Fax: (505) 740-9720

DISTRICT III

1000 Rio Brazos Rd., Aztec, NM 87410
Phone (505) 334-0170 Fax: (505) 334-0170

DISTRICT IV

1220 S. St. Francis Dr., Santa Fe, NM 87505
Phone (505) 476-3469 Fax: (505) 476-3466State of New Mexico
Energy, Minerals and Natural Resources Department

Form C-102

Revised August 1, 2011

Submit one copy to appropriate
District Office

RECEIVED

OIL CONSERVATION DIVISION

1220 South St. Francis Dr.
Santa Fe, New Mexico 87505

WELL LOCATION AND ACREAGE DEDICATION PLAT

☐ AMENDED REPORT

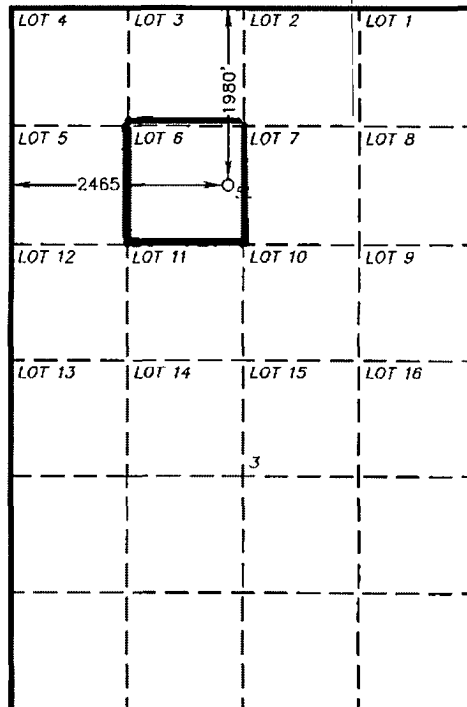
API Number 30-025-40848	Pool Code 22900	Pool Name Eunice; Blinebry-Tubb-Drinkard - North
Property Code 22503	Property Name NORTHEAST DRINKARD UNIT	Well Number 176W
GRID No. 873	Operator Name APACHE CORPORATION	Elevation 3487'

Surface Location

UL or lot No.	Section	Township	Range	Lot Idn	Feet from the	North/South line	Feet from the	East/West line	County
LOT 6	3	21 S	37 E		1980	NORTH	2465	WEST	LEA

Bottom Hole Location If Different From Surface

UL or lot No.	Section	Township	Range	Lot Idn	Feet from the	North/South line	Feet from the	East/West line	County
Dedicated Acres 40	Joint or Infill	Consolidation Code	Order No.						

NO ALLOWABLE WILL BE ASSIGNED TO THIS COMPLETION UNTIL ALL INTERESTS HAVE BEEN CONSOLIDATED
OR A NON-STANDARD UNIT HAS BEEN APPROVED BY THE DIVISION

SURFACE LOCATION
 Lat - N 32°31'00.59"
 Long - W 103°09'05.37"
 NMSPCE- N 553773.118
 E 905634.968
 (NAD-83)
 Lat - N 32°31'00.16"
 Long - W 103°09'03.67"
 NMSPCE- N 553713.196
 E 884451.307
 (NAD-27)

32.5/6647
103.15/019

1" = 2000'

OPERATOR CERTIFICATION

I hereby certify that the information contained herein is true and complete to the best of my knowledge and belief, and that this organization either owns a working interest or unleased mineral interest in the land including the proposed bottom hole location or has a right to drill this well at this location pursuant to a contract with an owner of such a mineral or working interest, or to a voluntary pooling agreement or a compulsory pooling order heretofore entered by the division.

Vicki Brown 10/3/12
 Signature Date
Vicki Brown
 Printed Name
VICKI.brown@apachecorp.com
 Email Address

SURVEYOR CERTIFICATION

I hereby certify that the well location shown on this plat was plotted from field notes of actual surveys made by me or under my supervision, and that the same is true and correct to the best of my belief.

GARY L. JONES 2012
 Date
GARY L. JONES
 Signature
GARY L. JONES
 Seal of Professional Surveyor
 27823

Certificate No. Gary L. Jones 7977

BASIN SURVEYS 27323

NOV 08 2012