

DISTRICT I  
1625 N. French Dr., Hobbs, NM 88240  
Phone (505) 393-0161 Fax: (505) 393-0720

DISTRICT II  
511 S. First St., Artesia, NM 88210  
Phone (505) 746-1263 Fax: (505) 746-9720

DISTRICT III  
1000 Rio Brazos Rd., Aztec, NM 87410  
Phone (505) 334-6170 Fax: (505) 334-6170

DISTRICT IV  
1220 S. St. Francis Dr., Santa Fe, NM 87505  
Phone (505) 476-3469 Fax: (505) 476-3462

HOBBS OCD

NOV 0 2 2012

RECEIVED

State of New Mexico  
Energy, Minerals and Natural Resources Department

Form C-102  
Revised August 1, 2011

Submit one copy to appropriate  
District Office

OIL CONSERVATION DIVISION

1220 South St. Francis Dr.  
Santa Fe, New Mexico 87505

WELL LOCATION AND ACREAGE DEDICATION PLAT

☐ AMENDED REPORT

API Number 30-025-40849	Pool Code 22700	Pool Name Eunee; Blinney-Tubb-Drinkard - NDRIT
Property Code 22503	Property Name NORTHEAST DRINKARD UNIT	Well Number 263W
GRID No. 873	Operator Name APACHE CORPORATION	Elevation 3473'

Surface Location

UL or lot No.	Section	Township	Range	Lot Idn	Feet from the	North/South line	Feet from the	East/West line	County
LOT 11	3	21 S	37 E		3345	NORTH	1620	WEST	LEA

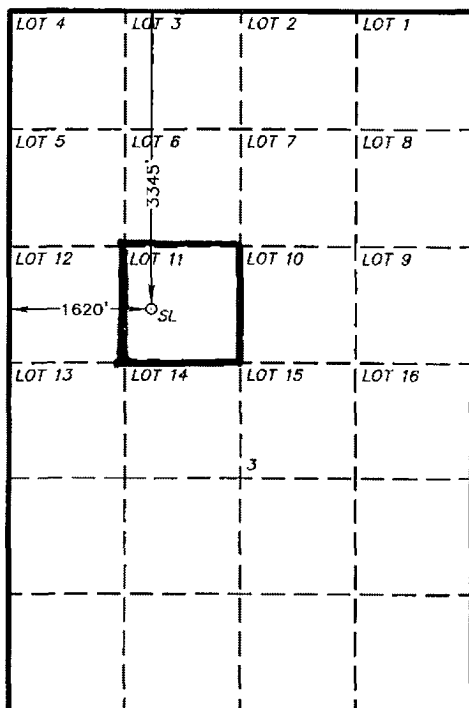
Bottom Hole Location If Different From Surface

UL or lot No.	Section	Township	Range	Lot Idn	Feet from the	North/South line	Feet from the	East/West line	County
Dedicated Acres 4.0	Joint or Infill	Consolidation Code	Order No.						

NO ALLOWABLE WILL BE ASSIGNED TO THIS COMPLETION UNTIL ALL INTERESTS HAVE BEEN CONSOLIDATED  
OR A NON-STANDARD UNIT HAS BEEN APPROVED BY THE DIVISION

SURFACE LOCATION  
Lot - N 32°30'47.09"  
Long - W 103°09'15.24"  
NMSPCE - N 552399.850  
E 904805.323  
(NAD-83)  
Lot - N 32°30'46.66"  
Long - W 103°09'13.54"  
NMSPCE - N 552339.865  
E 863621.582  
(NAD-27)

32.512961  
103.153761



1" = 2000'

OPERATOR CERTIFICATION

I hereby certify that the information contained herein is true and complete to the best of my knowledge and belief, and that this organization either owns a working interest or unleased mineral interest in the land including the proposed bottom hole location or has a right to drill this well at this location pursuant to a contract with an owner of such a mineral or working interest, or to a voluntary pooling agreement or a compulsory pooling order heretofore entered by the division.

Signature: Vicki Brown 10/3/12  
Printed Name: VICKI BROWN  
Email Address: vicki.brown@apachecorp.com

SURVEYOR CERTIFICATION

I hereby certify that the well location shown on this plat was plotted from field notes of actual surveys made by me or under my supervision and that the same is true and correct to the best of my belief.

GARY L. JONES  
Date: SEPTEMBER 14, 2012  
Signature & Seal of Professional Surveyor  
W.C. No. 27324

Certificate No. Gary L. Jones 7977  
BASIN SURVEYS 27324

NOV 0 8 2012