

NMOCD - Hobbs

District I  
1625 N French Dr., Hobbs, NM 88240  
Phone (575) 393-6161 Fax (575) 393-0720  
District II  
811 S First St., Artesia, NM 88210  
Phone (575) 748-1283 Fax (575) 748-9720  
District III  
1000 Rio Brazos Road, Aztec, NM 87410  
Phone (505) 334-6178 Fax (505) 334-6170  
District IV  
1220 S St. Francis Dr., Santa Fe, NM 87505  
Phone (505) 476-3460 Fax (505) 476-3462

HOBBS OCD  
NOV 07 2012  
RECEIVED

State of New Mexico  
Energy Minerals and Natural Resources  
Oil Conservation Division  
1220 South St. Francis Dr.  
Santa Fe, NM 87505

Form C-101  
Revised December 16, 2011

Permit

APPLICATION FOR PERMIT TO DRILL, RE-ENTER, DEEPEN, PLUGBACK, OR ADD A ZONE

<sup>1</sup> Operator Name and Address Marshall & Winston Incorporated POB 50880 Midland, TX 79710-0880		<sup>2</sup> OGRID Number 14187
		<sup>3</sup> API Number 30-025-40852
<sup>4</sup> Property Code 311839	<sup>5</sup> Property Name KLEIN STATE 16	<sup>6</sup> Well No 2H

7 Surface Location									
UL - Lot	Section	Township	Range	Lot Idn	Feet from	N/S Line	Feet From	E/W Line	County
SL: A	16	19S	35E	-	660	N	250	E	LEA
BHL: D	16	19S	35E	-	660	N	4200	W	LEA

<sup>8</sup> Pool Information Per NMOCD: Scharb; Bone Spring rd		55610
<b>Additional Well Information</b>		

<sup>9</sup> Work Type N	<sup>10</sup> Well Type O	<sup>11</sup> Cable/Rotary C	<sup>12</sup> Lease Type S	<sup>13</sup> Ground Level Elevation 3787
<sup>14</sup> Multiple S	<sup>15</sup> Proposed Depth V-9380, M-13876	<sup>16</sup> Formation Bone Springs	<sup>17</sup> Contractor TBA	<sup>18</sup> Spud Date ASAP est 11/2012
Depth to Ground water est. 50-150		Distance from nearest fresh water well Data per OCD		Distance to nearest surface water N/A

19 Proposed Casing and Cement Program						
Type	Hole Size	Casing Size	Casing Weight/ft	Setting Depth	Sacks of Cement	Estimated TOC
J-55	17.5	13.375	54.4	1800'	1429	surface
J-55	12.25	9.625	40.0	4000'	1010	surface
P-110	8.75	7.00	26.0	9380' (TVD)	1418	surface
P-110	6.25	4.50	11.6	13876 (MD)	849	TOL 8750

<b>Casing/Cement Program: Additional Comments</b>
---

Proposed Blowout Prevention Program			
Type	Working Pressure	Test Pressure	Manufacturer
Double Ram w/Annular	3M minimum	3,000 minimum	Reagan/Schaffer

I hereby certify that the information given above is true and complete to the best of my knowledge and belief I further certify that the drilling pit will be constructed according to NMOCD guidelines <input checked="" type="checkbox"/> , a general permit <input type="checkbox"/> , or an (attached) alternative OCD-approved plan <input type="checkbox"/> .		<b>OIL CONSERVATION DIVISION</b>	
Signature <i>Vernon D. Dyer</i>		Approved By <i>[Signature]</i>	
Printed name Vernon D. Dyer		Title <i>DIST MGR</i>	
Title Agent		Approved Date <i>11-7-2012</i>	Expiration Date <i>11-7-2014</i>
E-mail Address vdyeroil@cableone.com			
Date 11/07/2012	Phone (575) 420-0355	Conditions of Approval Attached	

NOV 08 2012

dm

DISTRICT I  
1625 N. French Dr., Hobbs, NM 88240  
Phone: (575) 393-6161 Fax: (575) 393-0720

DISTRICT II  
811 S. First St., Artesia, NM 88210  
Phone: (575) 748-1283 Fax: (575) 748-9720

DISTRICT III  
1000 Rio Bruzos Road, Aztec, NM 87410  
Phone: (505) 334-6178 Fax: (505) 334-6170

DISTRICT IV  
1220 S. St. Francis Dr., Santa Fe, NM 87505  
Phone: (505) 476-3460 Fax: (505) 476-3462

HOBBS OCD

NOV 07 2012

RECEIVED

State of New Mexico  
Energy, Minerals & Natural Resources Department  
OIL CONSERVATION DIVISION  
1220 South St. Francis Dr.  
Santa Fe, New Mexico 87505

Form C-102  
Revised August 1, 2011  
Submit one copy to appropriate  
District Office

☐ AMENDED REPORT

WELL LOCATION AND ACREAGE DEDICATION PLAT

API Number <b>30-025-40852</b>	Pool Code <b>55610</b>	Pool Name <b>Scharb; Bone Spring</b>
Property Code <b>311839</b>	Property Name <b>KLEIN STATE 16</b>	Well Number <b>2H</b>
OGRID No <b>14187</b>	Operator Name <b>MARSHALL &amp; WINSTON, INC.</b>	Elevation <b>3787'</b>

Surface Location

UL or lot No.	Section	Township	Range	Lot Idn	Feet from the	North/South line	Feet from the	East/West line	County
A	16	19-S	35-E		660	NORTH	250	EAST	LEA

Bottom Hole Location If Different From Surface

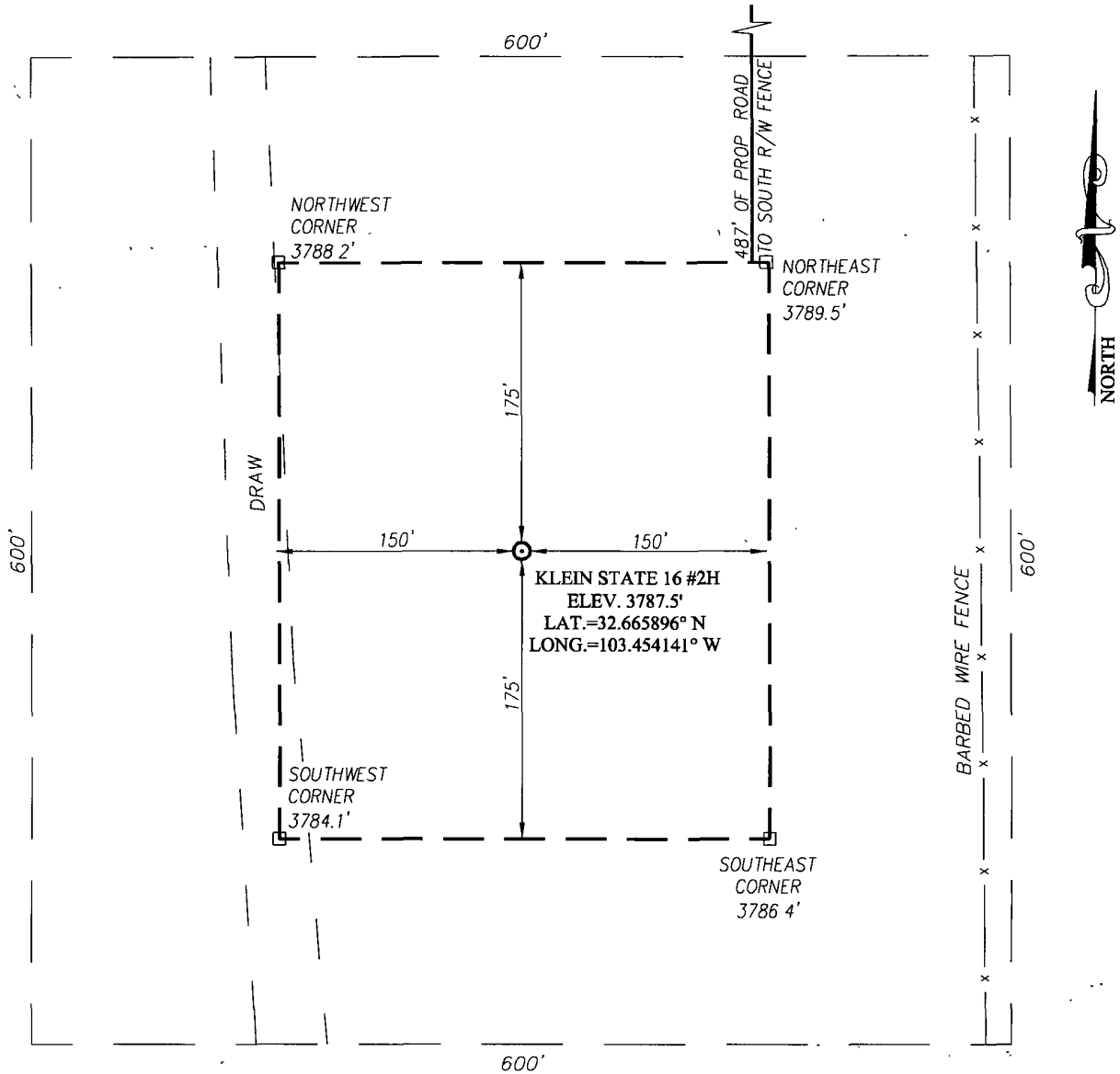
UL or lot No.	Section	Township	Range	Lot Idn	Feet from the	North/South line	Feet from the	East/West line	County
D	16	19-S	35-E		660	NORTH	<b>4230</b>	WEST	LEA
Dedicated Acres	Joint or Infill	Consolidation Code	Order No.	<b>7.02</b>					

NO ALLOWABLE WILL BE ASSIGNED TO THIS COMPLETION UNTIL ALL INTERESTS HAVE BEEN CONSOLIDATED OR A NON-STANDARD UNIT HAS BEEN APPROVED BY THE DIVISION

	<p>GRID AZ = 269°16'33"</p> <p>HORIZ. DIST. = 4700 31'</p>	<p>SL</p> <p>250'</p>	<p><b>OPERATOR CERTIFICATION</b></p> <p>I hereby certify that the information herein is true and complete to the best of my knowledge and belief, and that this organization either owns a working interest or unleased mineral interest in the land including the proposed bottom hole location or has a right to drill this well at this location pursuant to a contract with an owner of such mineral or working interest, or to a voluntary pooling agreement or a compulsory pooling order heretofore entered by the division.</p> <p><i>Vernon D. Dyer</i> 11/7/2012 Signature Date</p> <p><b>Vernon D. Dyer</b> Printed Name</p> <p><b>vdyer@oil@cableone.com</b> E-mail Address</p>	
	<p>660'N 716'E</p> <p>P.O.P.</p>	<p>660'</p> <p>716'</p>	<p><b>GEODETIC COORDINATES</b> NAD 27 NME</p> <p><b>SURFACE LOCATION</b> Y=607084.6 N X=770561 3 E</p> <p>LAT. = 32.665896° N LONG. = 103.454141° W</p>	<p><b>SURVEYOR CERTIFICATION</b></p> <p>I hereby certify that the well location shown on this plat was plotted from field notes of actual surveys made by me or under my supervision, and that the same is true and correct to the best of my belief.</p> <p>OCTOBER 16, 2012</p> <p>Date of Survey</p> <p>Signature &amp; Seal of Professional Surveyor:</p> <p> Certificate Number: Gary C. Eidson 12641 Ronald J. Eidson 3239</p> <p>ACR WSC W.O. 12.11.1732</p>
	<p><b>BOTTOM HOLE LOCATION</b> Y=607025.0 N X=765860 8 E</p>			

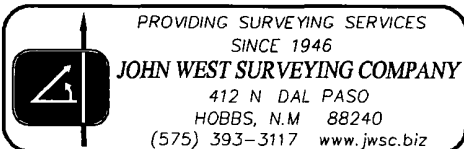
ELG 11-7-2012

**SECTION 16, TOWNSHIP 19 SOUTH, RANGE 35 EAST, N.M.P.M.**  
**LEA COUNTY** **NEW MEXICO**



**DIRECTIONS TO LOCATION**

FROM THE INTERSECTION OF U.S HWY 62 & 180 AND CO. RD. #44 (BRUTON) GO WEST ON CO. RD. #44 APPROX 0.45 MILES. FOLLOWED STAKED ROAD 487 FEET SOUTH TO THE NORTHEAST PAD CORNER OF THE KLEIN STATE 16 #2H WELL



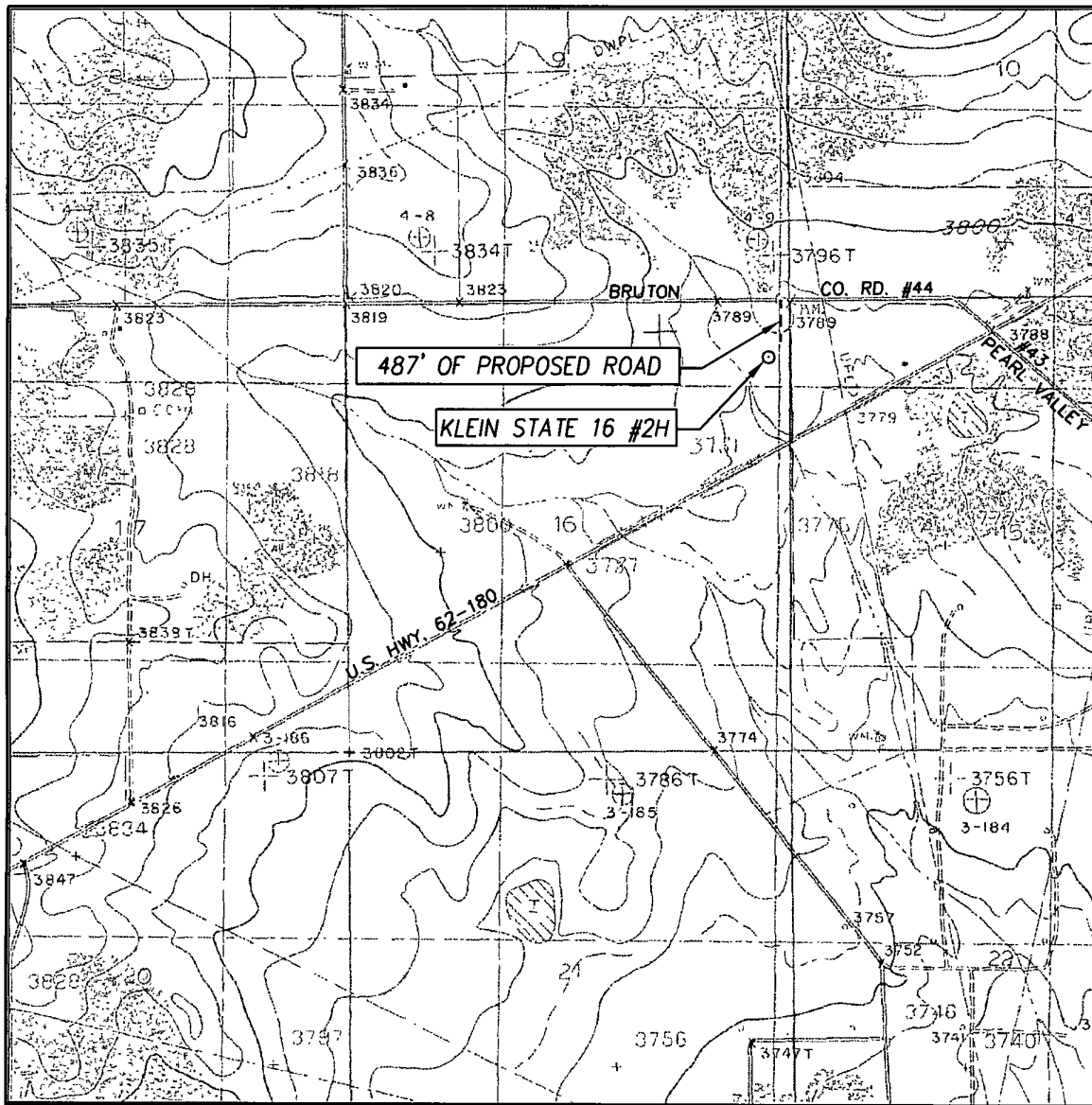
**MARSHALL & WINSTON, INC.**

**KLEIN STATE 16 #2 WELL**  
 LOCATED 660 FEET FROM THE NORTH LINE  
 AND 250 FEET FROM THE EAST LINE OF SECTION 16,  
 TOWNSHIP 19 SOUTH, RANGE 35 EAST, N.M.P.M.,  
 LEA COUNTY, NEW MEXICO

Survey Date: 10/16/12	CAD Date: 10/22/12	Drawn By: ACR
WO No: 12111732	Rev:	Rel WO:

Sheet 1 of 1

# LOCATION VERIFICATION MAP



SCALE: 1" = 2000'

CONTOUR INTERVAL:  
IRONHOUSE DRAW, N.M. - 10'

SEC. 16 TWP. 19-S RGE 35-E

SURVEY \_\_\_\_\_ N.M.P.M.

COUNTY LEA STATE NEW MEXICO

DESCRIPTION 660' FNL & 250' FEL

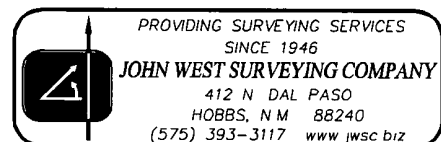
ELEVATION 3787'

OPERATOR MARSHALL & WINSTON, INC.

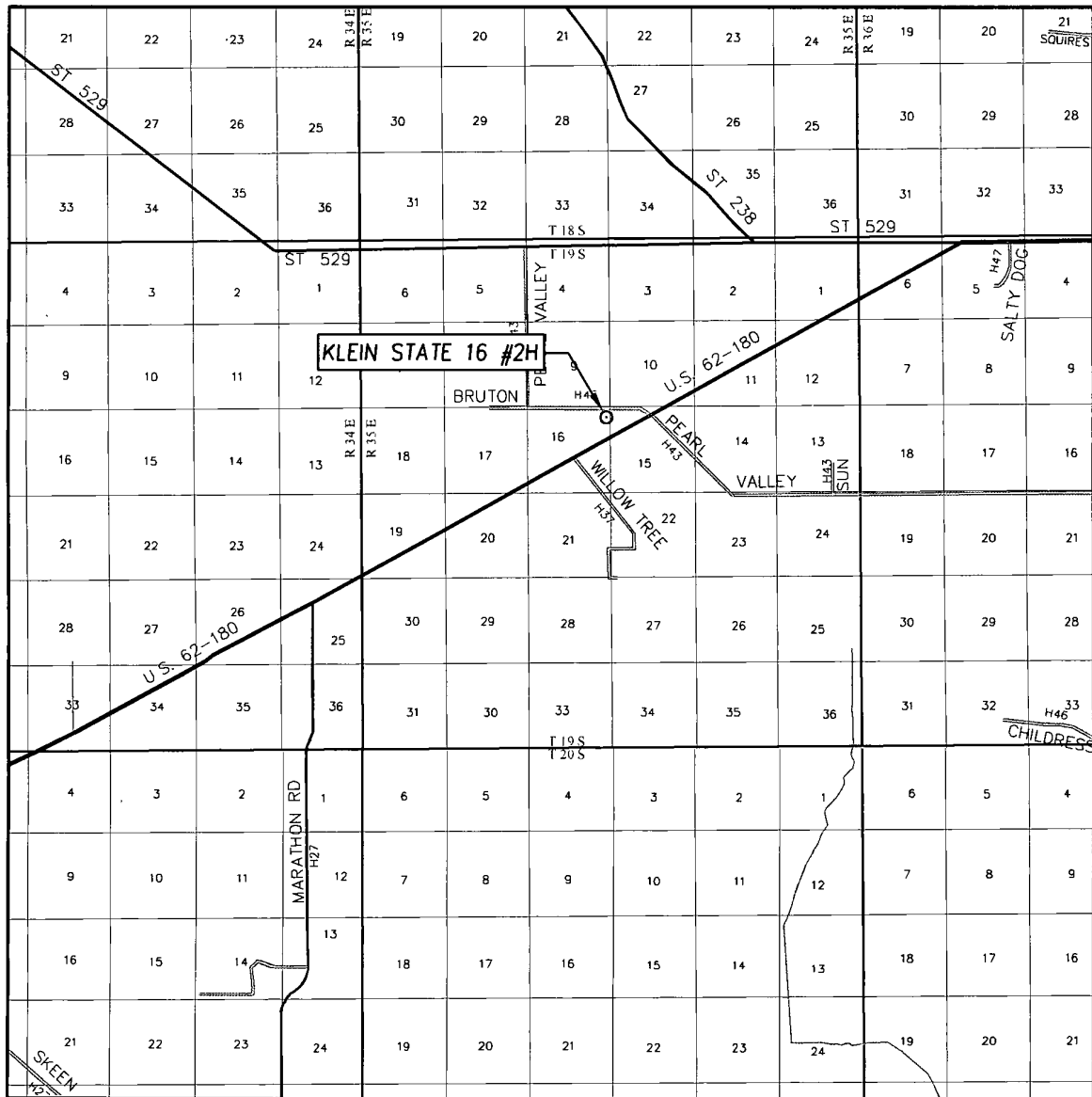
LEASE KLEIN STATE 16

U.S.G.S. TOPOGRAPHIC MAP

IRONHOUSE DRAW, N.M.



# VICINITY MAP



SCALE: 1" = 2 MILES

SEC 16 TWP. 19-S RGE. 35-E

SURVEY N.M.P.M

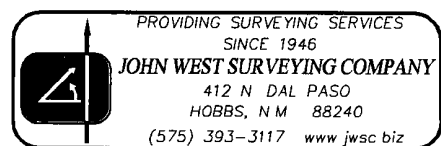
COUNTY LEA STATE NEW MEXICO


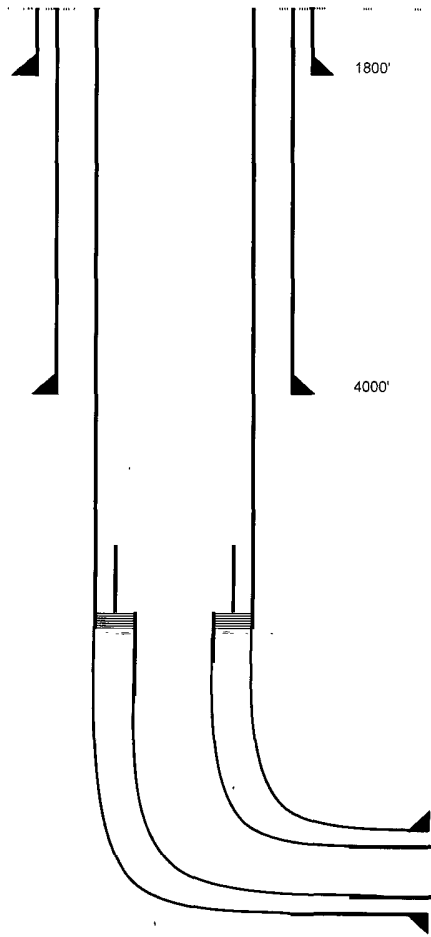
DESCRIPTION 660' FNL & 250' FEL

ELEVATION 3787'

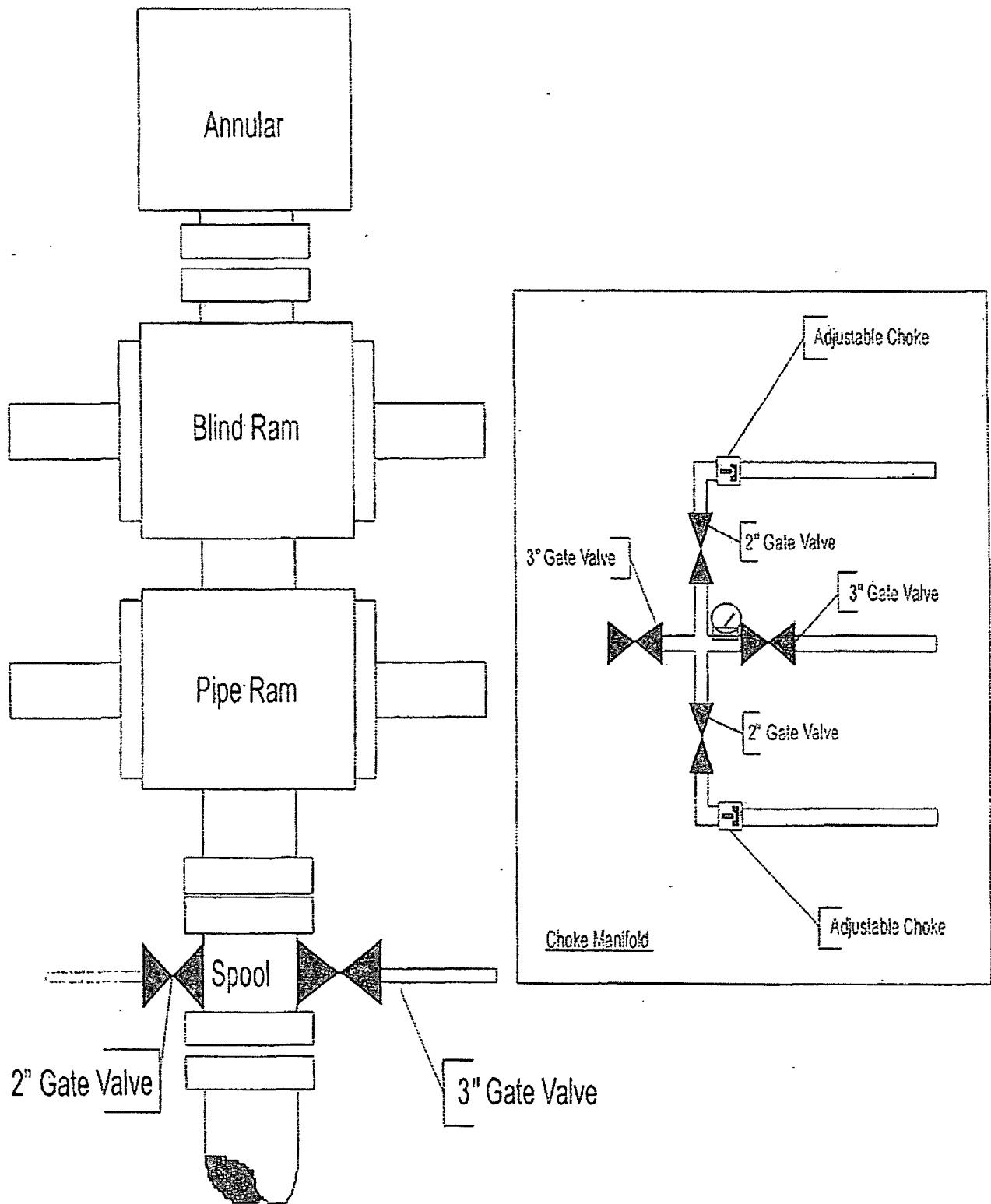
OPERATOR MARSHALL & WINSTON, INC.

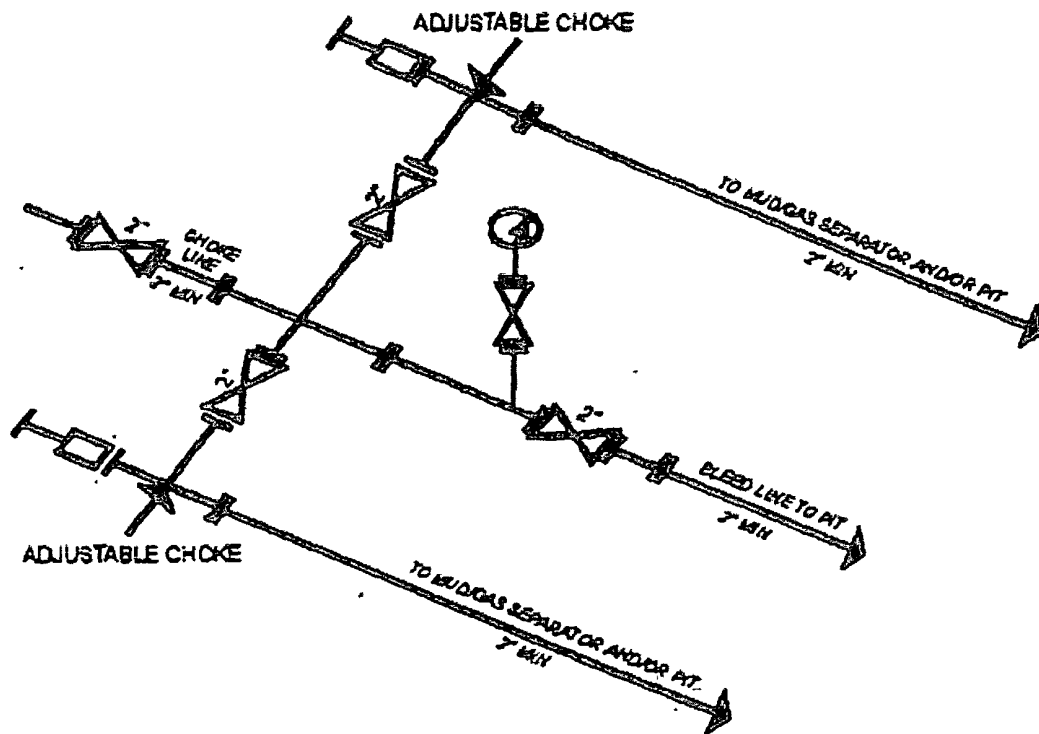
LEASE KLEIN STATE 16



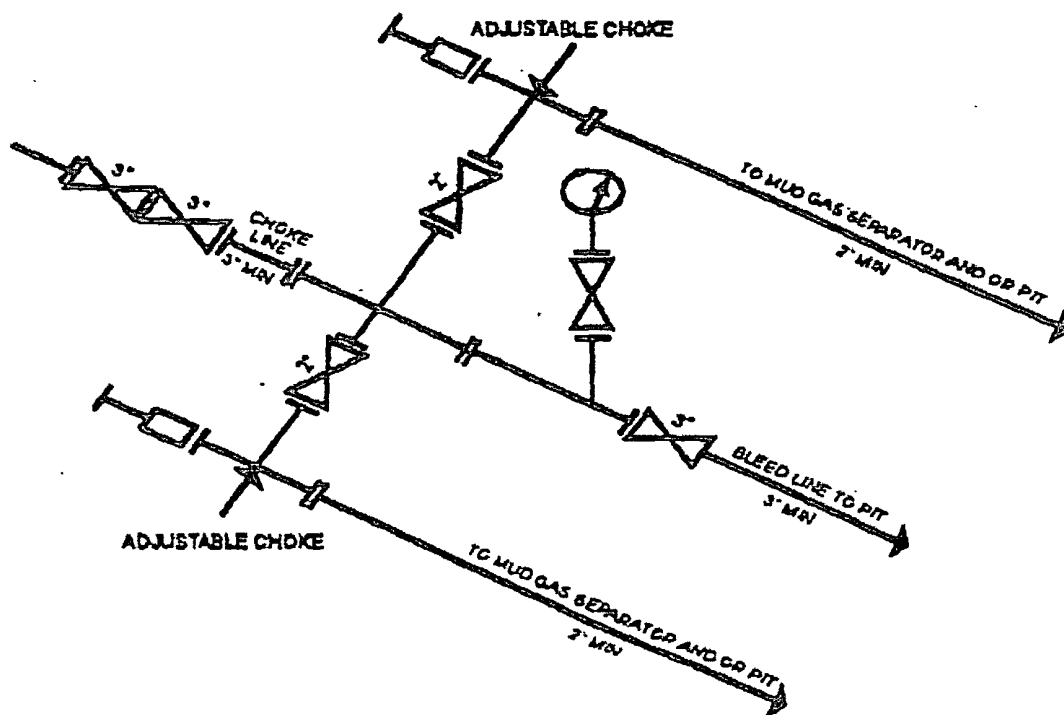
AFE No. API # 30- Permit No. Project No.	<div data-bbox="651 73 819 138">  </div> <div data-bbox="630 105 840 203"> <b>Klein State 16-2H</b>          Lea County, NM          Proposed Wellbore Sketch       </div>	AFE Information Dry Hole:      Days. Proposed TD: 13,876' TMD 9480' TVD v
<div data-bbox="294 300 724 1242">  </div> <div data-bbox="892 316 1207 414">         Drill 17-1/2" Hole with Spud Mud          13-3/8" 54 4# J-55 STC Surface at 1800'          Cement to surface 2500 cubic feet          Drill out with 12-1/4" Bit       </div> <div data-bbox="892 568 1144 600">         Cement to surface 2031 cubic feet       </div> <div data-bbox="892 633 1134 706"> <b>9-5/8" 40# J-55 Casing at 4000'</b>          Drill with 8-3/4" to KOP       </div> <div data-bbox="892 885 1155 958">         Liner Hanger at 8750'          Kick off with 8-3/4" bit at about 8902'       </div> <div data-bbox="892 974 1207 1039"> <b>Land Curve at 9380' TVD 9641' TMD</b>          Run 7" 26# P-110 Casing          Cement to surface 2330 cubic feet       </div> <div data-bbox="892 1039 1281 1079"> <b>Point of Penetration 660' FNL &amp; 716' FEL</b> </div> <div data-bbox="892 1088 1144 1128">         Drill out with 6-1/8" bit to TD       </div> <div data-bbox="1407 1104 1722 1144"> <b>4-1/2" P-110 11.6# LTC Casing</b> </div> <div data-bbox="1575 1153 1722 1193"> <b>TMD 13.876'</b> </div> <div data-bbox="1281 1226 1522 1258">         Cement to 8750' 1087 cubic feet       </div> <div data-bbox="1554 1226 1680 1258"> <b>TVD 9480'</b> </div>		
<div data-bbox="283 1396 672 1461"> <u>Well Information</u>          Surface Location Lea County, T19S R35E Section 16       </div>		

3,000 psi BOPE  
Annular Preventor  
Blind Ram  
Pipe Ram





2M CHOKER MANIFOLD EQUIPMENT - CONFIGURATION OF CHOKES MAY VARY



3M CHOKER MANIFOLD EQUIPMENT - CONFIGURATION OF CHOKES MAY VARY