

DISTRICT I
1625 N. French Dr., Hobbs, NM 88240
Phone (575) 593-8161 Fax: (575) 593-0720

DISTRICT II
811 S. First St., Artesia, NM 88210
Phone (575) 748-1283 Fax: (575) 748-0720

DISTRICT III
1000 Rio Brazos Rd., Aztec, NM 87410
Phone (505) 334-6178 Fax: (505) 334-6178

DISTRICT IV
1220 S. St. Francis Dr., Santa Fe, NM 87505
Phone (505) 476-3460 Fax: (505) 476-3462

State of New Mexico
Energy, Minerals and Natural Resources Department

NOV 15 2012

Form C-102
Revised August 1, 2011

Submit one copy to appropriate
District Office

OIL CONSERVATION DIVISION
1220 South St. Francis Dr.
Santa Fe, New Mexico 87505

RECEIVED

WELL LOCATION AND ACREAGE DEDICATION PLAT

☐ AMENDED REPORT

API Number 30-025-40862	Pool Code 97293	Pool Name Ojo Chiso; BONE SPRING South
Property Code 38999	Property Name PRYOR FEDERAL - STATE COM	Well Number 4H
OCRID No. 260511	Operator Name GMT EXPLORATION CO., LLC	Elevation 3378'

Surface Location

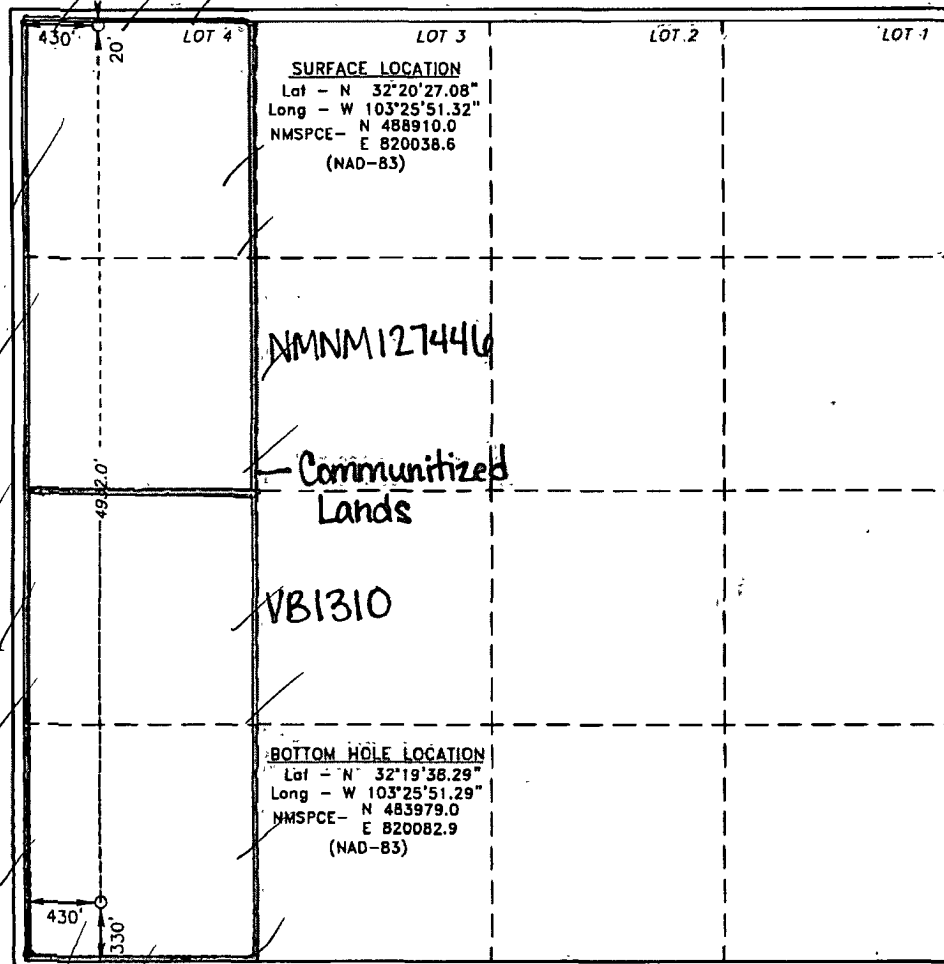
UL or lot No.	Section	Township	Range	Lot Idn	Feet from the	North/South line	Feet from the	East/West line	County
LOT 4	1	23 S	34 E		20	NORTH	430	WEST	LEA

Bottom Hole Location If Different From Surface

UL or lot No.	Section	Township	Range	Lot Idn	Feet from the	North/South line	Feet from the	East/West line	County
M	1	23 S	34 E		330	SOUTH	430	WEST	LEA

Dedicated Acres	Joint or Infill	Consolidation Code	Order No.
160.19			

NO ALLOWABLE WILL BE ASSIGNED TO THIS COMPLETION UNTIL ALL INTERESTS HAVE BEEN CONSOLIDATED
OR A NON-STANDARD UNIT HAS BEEN APPROVED BY THE DIVISION



OPERATOR CERTIFICATION

I hereby certify that the information contained herein is true and complete to the best of my knowledge and belief, and that this organization either owns a working interest or unleased mineral interest in the land including the proposed bottom hole location or has a right to drill this well at this location pursuant to a contract with an owner of such a mineral or working interest, or to a voluntary pooling agreement or a compulsory pooling order heretofore entered by the division.

Signature: *[Signature]* Date: 8/24/12
Printed Name: Keith Kress
Email Address: KRESS@GMTEXPLORATION.GM

SURVEYOR CERTIFICATION

I hereby certify that the well location shown on this plat was plotted from field notes of actual surveys made by me or under my supervision and that the same is true and correct to the best of my belief.

Date Surveyed: 8/24/12
Signature: *[Signature]*
Professional Surveyor: 7977
Certificate No. Gary L. Jones 7977

BASIN SURVEYS 27060

ELG 11-19-2012

NOV 19 2012