

UNITED STATES  
DEPARTMENT OF THE INTERIOR  
BUREAU OF LAND MANAGEMENT

SUBMIT IN  
DUPLICATE

(See other instructions on  
reverse side)

FORM APPROVED  
OMB NO. 1004-0137  
Expires: February 28, 1995

5. LEASE DESIGNATION AND LEASE NO.  
SF-078771

6. IF INDIAN, ALLOTTEE OR

7. UNIT AGREEMENT NAME

8. FARM OR LEASE NAME, WELL NO.  
ROSA UNIT #212A

9. API WELL NO.  
30-039-27818

10. FIELD AND POOL, OR WILDCAT  
BASIN FRUITLAND COAL

11. SEC., T., R., M., OR BLOCK AND  
SURVEY OR AREA  
SW/4 SE/4 SEC 14-31N-6W

12. COUNTY OR  
RIO ARriba

13. STATE  
NEW MEXICO

19. ELEVATION CASING HEAD

WELL COMPLETION OR RECOMPLETION REPORT AND LOG\*

1a. TYPE OF WELL: ☐ OIL WELL ☒ GAS WELL ☐ DRY ☐ OTHER  
b. TYPE OF COMPLETION:  
☒ NEW WELL ☐ WORKOVER ☐ DEEPEN ☐ PLUG BACK ☐ DIFF. RESVR. ☐ OTHER

2. NAME OF OPERATOR  
WILLIAMS PRODUCTION COMPANY

3. ADDRESS AND TELEPHONE NO.  
P.O. BOX 3102 MS 25-1 TULSA, OK 74101 (918) 573-6254

4. LOCATION OF WELL (Report location clearly and in accordance with any State requirements)\*  
At Surface: 1150' FSL & 1385' FEL  
At top production interval reported below:  
At total depth:

15. DATE  
SPUDDED  
08/12/2004

16. DATE T.D.  
REACHED  
08/25/2004

17. DATE COMPLETED (READY TO PRODUCE)  
10/16/2004

14. PERMIT NO.  
DATE ISSUED  
18. ELEVATIONS (DK, RKB, RT, GR, ETC.)\*  
6210' GR

20. TOTAL DEPTH, MD & TVD  
3168' MD

21. PLUG, BACK T.D., MD & TVD

22. IF MULTICOMP.,  
HOW MANY

23. INTERVALS  
DRILLED BY

ROTARY TOOLS  
X

CABLE TOOLS

24. PRODUCING INTERVAL(S), OF THIS COMPLETION - TOP, BOTTOM, NAME (MD AND TVD)\*  
BASIN FRUITLAND COAL 2894' - 3070'

26. TYPE ELECTRIC AND OTHER LOGS RUN  
NONE (Mud)

25. WAS DIRECTIONAL SURVEY MADE  
YES

27. WAS WELL CORED  
NO

28. CASING REPORT (Report all strings set in well)

CASING SIZE/GRADE	WEIGHT, LB./FT	DEPTH SET (MD)	HOLE SIZE	TOP OF CEMENT, CEMENTING RECORD	AMOUNT PULLED
9-5/8", K-55	36#	317'	12-1/4"	200 SX - SURFACE	
7", J-55	23#	2874'	8-3/4"	480 SX - SURFACE	

29. LINER RECORD

SIZE	TOP (MD)	BOTTOM (MD)	SACKS CEMENT*	SCREEN (MD)	SIZE	DEPTH SET (MD)	PACKER SET (MD)
5-1/2"	2784'	3168'	0 SX		2-7/8", J-55, 6.5#	3107'	

31. PERFORATION RECORD (Interval, size, and number)

Basin Fruitland Coal: 2894' to 2914', 2936' to 2946' & 3020' to 3070', total of 80' perforated, 0.50" holes, total of 320 holes.

32. ACID, SHOT, FRACTURE, CEMENT SQUEEZE, ETC.

DEPTH INTERVAL (MD)	AMOUNT AND KIND OF MATERIAL USED
	WELL WAS NOT ACIDIZED OR FRACED

33. PRODUCTION

DATE OF FIRST PRODUCTION		PRODUCTION METHOD (Flowing, gas lift, pumping-size and type of pump)				WELL STATUS (PRODUCING OR SI) SI, well on vacuum, no flow	
DATE OF TEST	TESTED	CHOKE SIZE	PROD'N FOR TEST PERIOD	OIL - BBL	GAS - MCF	WATER - BBL	GAS-OIL RATIO
FLOW TBG PRESS	CASING PRESSURE	CALCULATED 24-HOUR RATE		OIL - BBL	GAS - MCF	WATER - BBL	OIL GRAVITY-API (CORR.)

34. DISPOSITION OF GAS (Sold, used for fuel, vented, etc.): TO BE SOLD

35. LIST OF ATTACHMENTS: SUMMARY OF POROUS ZONES, WELLBORE DIAGRAM

36. I hereby certify that the foregoing and attached information is complete and correct as determined from all available records

SIGNED

*Nancy Ross*

TITLE Sr. Production Analyst

DATE October 26, 2004

TEST WITNESSED BY: CHIK CHARLEY

NMOCD

ACCEPTED FOR RECORD

26 2005

FARMINGTON FIELD OFFICE

RY

RECEIVED  
OCT 27 2004  
FARMINGTON FIELD OFFICE

37. SUMMARY OF POROUS ZONES: (Show all important zones of porosity and contents thereof; cored intervals, and all drill-stem tests, including depth interval tested, cushion used, time tool open, flowing and shut-in pressures, and recoveries):

### 38.GEOLOGIC MARKERS

FORMATION	TOP	BOTTOM	DESCRIPTION, CONTENTS, ETC.		NAME	TOP		
						NAME	MEASURED DEPTH	TRUE VERTICAL DEPTH
OJO ALAMO	2289'	2389'						
KIRTLAND	2389'	2799'						
FRUITLAND	2799'	3049'						
PICTURED CLIFFS	3049'							

ROSA UNIT #212A  
FRUITLAND COAL

Spud 08/12/04  
Completed 10/16/04  
1st Delivery 10/25/04

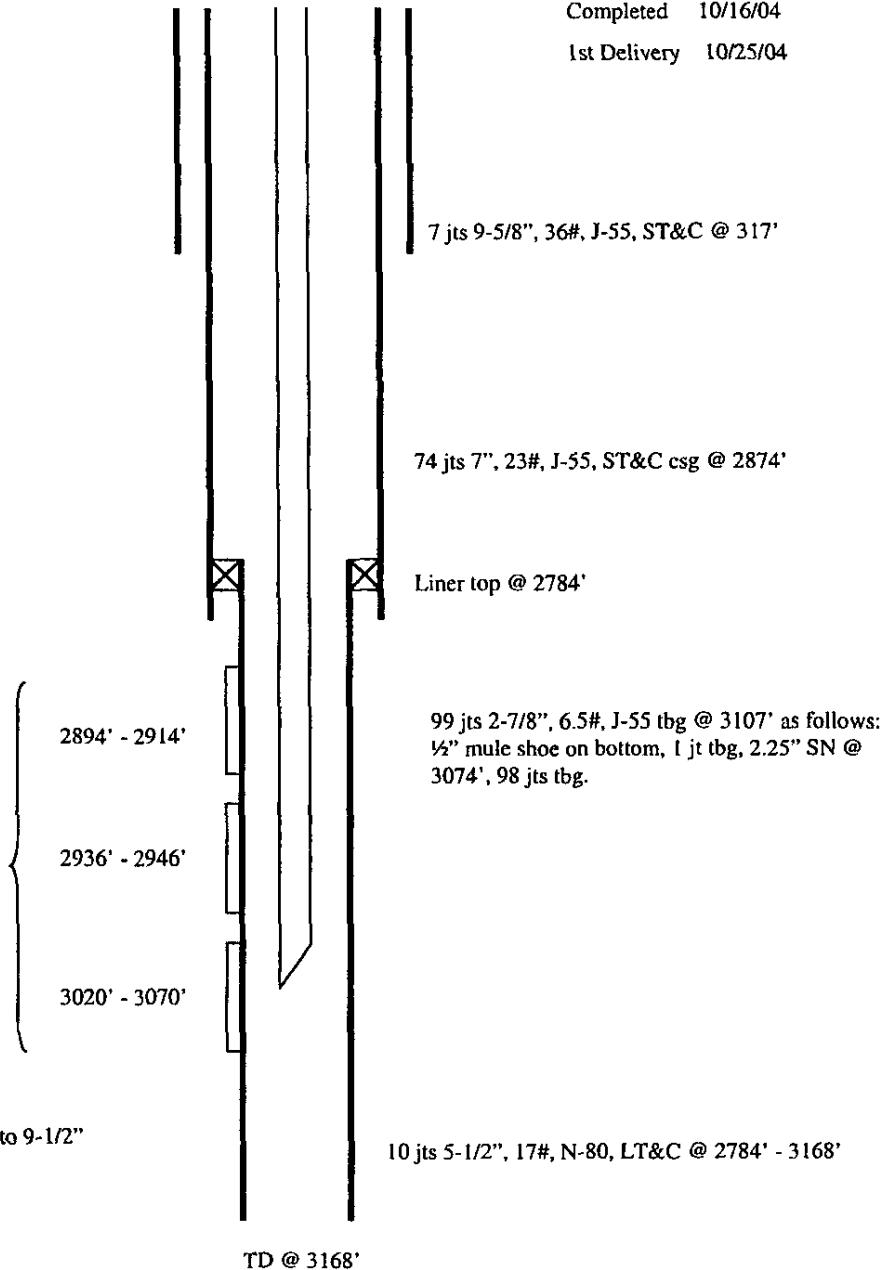
Location:

1150' FSL and 1385' FEL  
SW/4 SE/4 Sec 14(O), T31N, R6W  
Rio Arriba, New Mexico

Elevation: 6210' GR  
API # 30-039-27818

Top	Depth
Ojo Alamo	2289'
Kirtland	2389'
Fruitland	2799'
Pictured Cliffs	3049'

0.50", 4 SPF,  
320 holes total



Hole Size	Casing	Cement	Volume	Top of Cmt
12-1/4"	9-5/8", 36#	200 sx	282 cu. ft.	Surface
8-3/4"	7", 23#	480 sx	964 cu. ft.	Surface
6-1/4"	5-1/2", 17#	Did Not Cmt		