

District I  
1625 N. French Dr., Hobbs, NM 88240  
District II  
1301 W. Grand Avenue, Artesia, NM 88210  
District III  
1000 Rio Brazos Road, Aztec, NM 87410  
District IV  
1220 S. St. Francis Dr., Santa Fe, NM 87505

State of New Mexico  
Energy Minerals and Natural Resources

Form C-101  
May 27, 2004

Oil Conservation Division  
1220 South St. Francis Dr.  
Santa Fe, NM 87505

Submit to appropriate District Office

☐ AMENDED REPORT

**APPLICATION FOR PERMIT TO DRILL, RE-ENTER, DEEPEN, PLUGBACK, OR ADD A ZONE**

<sup>1</sup> Operator Name and Address Melrose Operating Company		<sup>2</sup> OGRID Number 184860
<sup>3</sup> Property Code 25191		<sup>4</sup> API Number 30 - 025 - 37240
<sup>5</sup> Property Name Jalmat Yates Sand Field Unit		<sup>6</sup> Well No. 221 ✓
<sup>9</sup> Proposed Pool 1 Jalmat (T-Y-7R)		<sup>10</sup> Proposed Pool 2

**7 Surface Location**

UL or lot no.	Section	Township	Range	Lot Idn	Feet from the	North/South line	Feet from the	East/West line	County
1	10	22S	35E		1980	South	330	East	Lea

**8 Proposed Bottom Hole Location If Different From Surface**

UL or lot no.	Section	Township	Range	Lot Idn	Feet from the	North/South line	Feet from the	East/West line	County

**Additional Well Information**

<sup>11</sup> Work Type Code N	<sup>12</sup> Well Type Code O	<sup>13</sup> Cable/Rotary R	<sup>14</sup> Lease Type Code S ✓	<sup>15</sup> Ground Level Elevation 3601
<sup>16</sup> Multiple no	<sup>17</sup> Proposed Depth 4200'	<sup>18</sup> Formation Yates ✓	<sup>19</sup> Contractor United Drilling	<sup>20</sup> Spud Date 5-2-05
Depth to Groundwater: 350'		Distance from nearest fresh water well: none		Distance from nearest surface water: none
Pit: Liner: Synthetic X 12 mils thick Clay <input type="checkbox"/> Pit Volume: 8000 bbls Drilling Method: Rotary				
Closed-Loop System <input type="checkbox"/> Fresh Water X Brine X Diesel/Oil-based <input type="checkbox"/> Gas/Air <input type="checkbox"/>				


**21 Proposed Casing and Cement Program**

Hole Size	Casing Size	Casing weight/foot	Setting Depth	Sacks of Cement	Estimated TOC
12 1/4"	8 5/8"	24#	350'	250 sx	Surface
7 7/8"	5 1/2"	15.5#	4200'	1200 sx	Surface

<sup>22</sup> Describe the proposed program. If this application is to DEEPEN or PLUG BACK, give the data on the present productive zone and proposed new productive zone. Describe the blowout prevention program, if any. Use additional sheets if necessary.

Propose to drill 12 1/4" hole to 350', set 8 5/8" casing to 350', cement with 250 sx Cl C cement - circulating to surface. Drill 7 7/8" hole to 4200', run open hole logs, set production string casing to total depth, cementing with 1200 sx Cl C, circulating to surface. Will perforate, stimulate & test.  
Development well in waterflood.

Permit Expires 1 Year From Approval  
Date Unless Drilling Underway

<sup>23</sup> I hereby certify that the information given above is true and complete to the best of my knowledge and belief. I further certify that the drilling pit will be constructed according to NMOCD guidelines X, a general permit <input type="checkbox"/> , or an (attached) alternative OCD-approved plan <input type="checkbox"/> .		<b>OIL CONSERVATION DIVISION</b>	
Printed name: Ann E. Ritchie		Approved by: 	
Title: Regulatory Agent		Title: PETROLEUM ENGINEER	
E-mail Address: ann.ritchie@wtor.net		Approval Date: MAY 18 2005 Expiration Date:	
Date: 5-9-05	Phone: 432 684-6381	Conditions of Approval Attached <input type="checkbox"/>	

DISTRICT I  
1625 N. FRENCH DR., HOBBBS, NM 88240

State of New Mexico  
Energy, Minerals and Natural Resources Department

DISTRICT II  
1301 W. GRAND AVENUE, ARTESIA, NM 88210

DISTRICT III  
1000 Rio Brazos Rd., Aztec, NM 87410

DISTRICT IV  
1220 S. ST. FRANCIS DR., SANTA FE, NM 87505

OIL CONSERVATION DIVISION  
1220 SOUTH ST. FRANCIS DR.  
Santa Fe, New Mexico 87505

Form C-102  
Revised JUNE 10, 2003  
Submit to Appropriate District Office  
State Lease - 4 Copies  
Fee Lease - 3 Copies

WELL LOCATION AND ACREAGE DEDICATION PLAT

☐ AMENDED REPORT

API Number <b>30-025-37240</b>	Pool Code <b>33820</b> ✓	Pool Name <b>Jalmat (Y-T-7R)</b> ✓
Property Code <b>4457625791</b>	Property Name <b>JYSU</b>	Well Number <b>221</b>
OGRID No. <b>184860</b>	Operator Name <b>MELROSE OPERATING COMPANY</b>	Elevation <b>3601'</b>

Surface Location

UL or lot No.	Section	Township	Range	Lot Idn	Feet from the	North/South line	Feet from the	East/West line	County
1	10	22-S	35-E		1980	SOUTH	330	EAST	LEA

Bottom Hole Location If Different From Surface

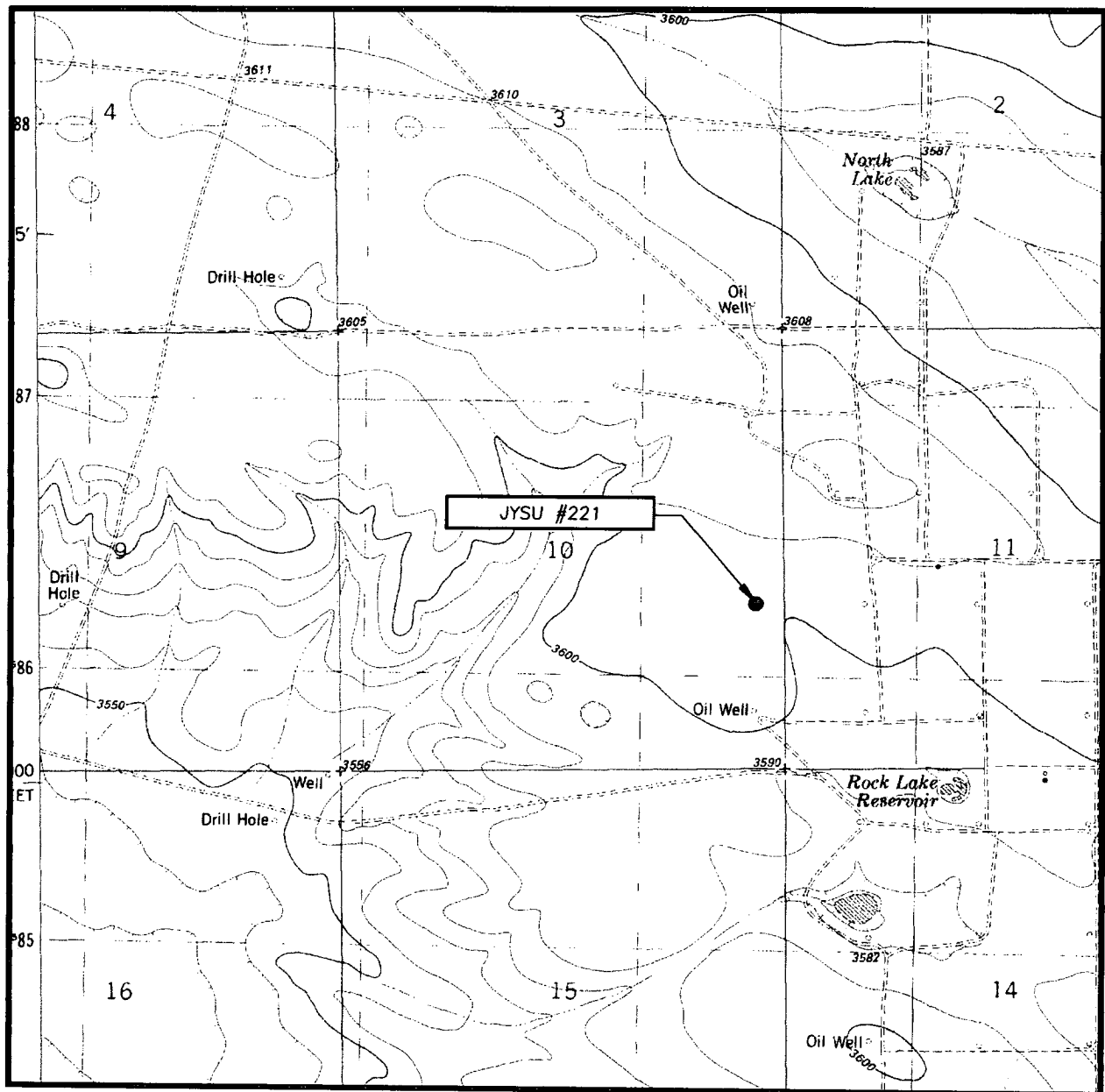
UL or lot No.	Section	Township	Range	Lot Idn	Feet from the	North/South line	Feet from the	East/West line	County

Dedicated Acres <b>40</b>	Joint or Infill	Consolidation Code	Order No. <b>waterflood</b>
------------------------------	-----------------	--------------------	--------------------------------

NO ALLOWABLE WILL BE ASSIGNED TO THIS COMPLETION UNTIL ALL INTERESTS HAVE BEEN CONSOLIDATED  
OR A NON-STANDARD UNIT HAS BEEN APPROVED BY THE DIVISION

<p>GEODETIC COORDINATES NAD 27 NME  Y=512217.8 N X=804262.5 E  LAT.=32°24'15.64" N LONG.=103°20'50.98" W</p> <p>330' 1980'</p>	<p><b>OPERATOR CERTIFICATION</b></p> <p>I hereby certify the the information contained herein is true and complete to the best of my knowledge and belief.</p> <p><i>[Signature]</i> Signature <b>Ann E. Ritchie</b> Printed Name <b>Regulatory Agent</b> Title <b>5-9-05</b> Date</p> <p><b>SURVEYOR CERTIFICATION</b></p> <p>I hereby certify that the well location shown on this plat was plotted from field notes of actual surveys made by me or under my supervision, and that the same is true and correct to the best of my belief.</p> <p>Date Set <b>5/15/05</b> Signature <b>G. EIDSON</b> Professional Surveyor <b>12641</b> 05.11.06 Certificate <b>GARY EIDSON</b> 12641</p>
--	---

# LOCATION VERIFICATION MAP



SCALE: 1" = 2000'

CONTOUR INTERVAL:  
OIL CENTER, N.M. - 10'

SEC. 10 TWP. 22-S RGE. 35-E

SURVEY N.M.P.M.

COUNTY LEA

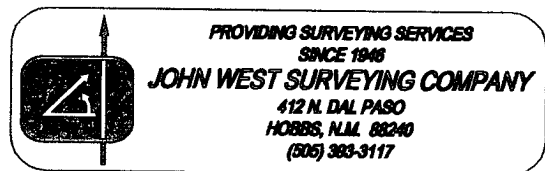
DESCRIPTION 1980' FSL & 330' FEL

ELEVATION 3601'

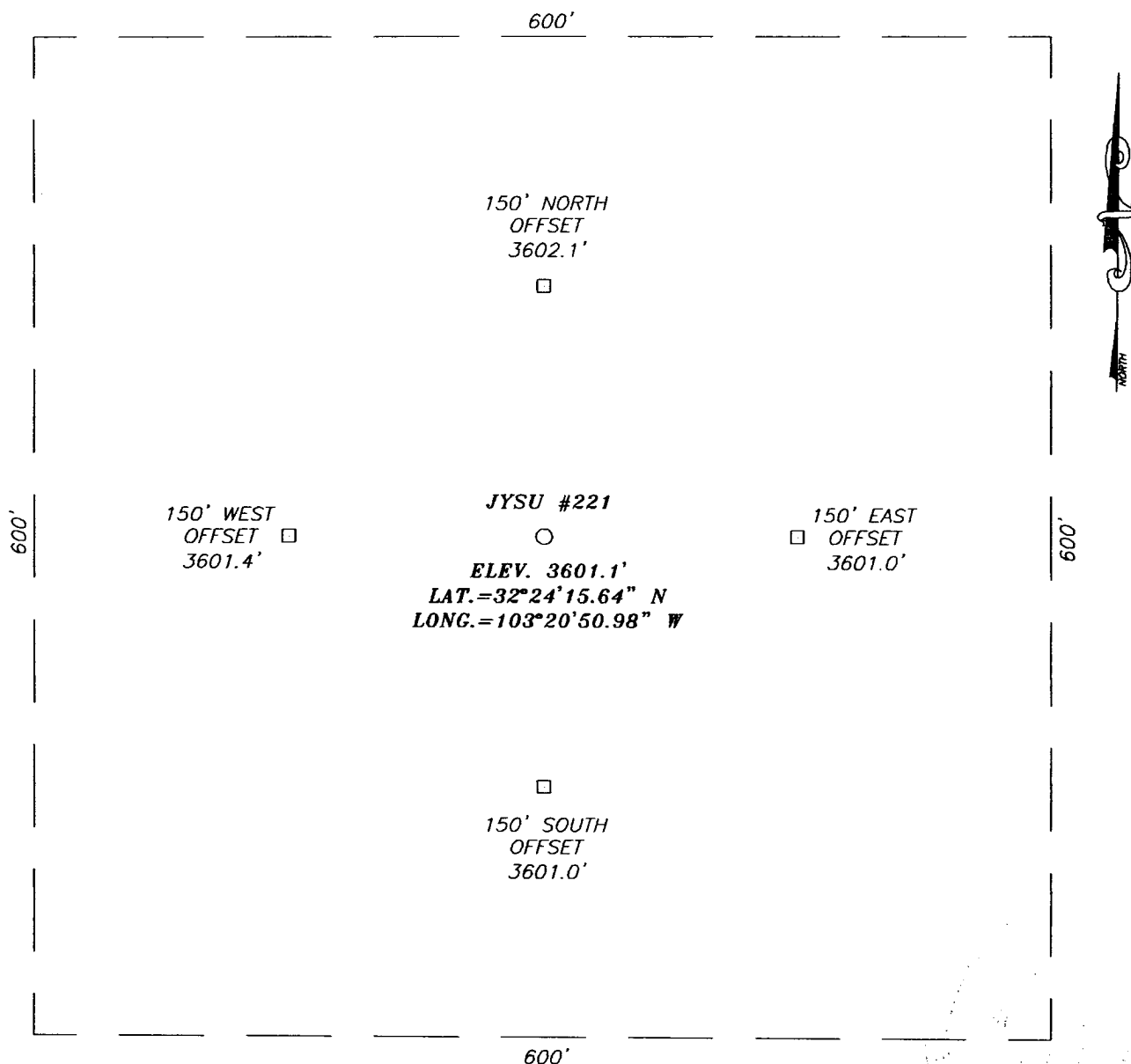
OPERATOR MELROSE  
OPERATING COMPANY

LEASE JYSU

U.S.G.S. TOPOGRAPHIC MAP  
OIL CENTER, N.M.

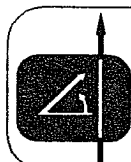
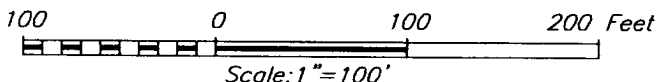


**SECTION 10, TOWNSHIP 22 SOUTH, RANGE 35 EAST, N.M.P.M.,**  
 LEA COUNTY, NEW MEXICO



**DIRECTIONS TO LOCATION**

FROM THE INTERSECTION OF ST. HWY. #176 AND ST. HWY. #8 (11 MILES SOUTH OF MONUMENT). GO WEST ALONG ST. HWY. #176 APPROX. 2.0 MILES AND TURN LEFT (SOUTH). GO APPROX. 5.0 MILES TO A "TEE" INTERSECTION AND TURN RIGHT (WEST). GO APPROX. 0.95 MILES AND TURN RIGHT (NORTH). GO APPROX. 0.2 MILES. FOLLOW CURVE APPROX. 2.0 MILES AND TURN RIGHT (NORTH). GO APPROX. 0.15 MILES AND TURN LEFT (WEST). GO APPROX. 0.95 MILES TO A "TEE" INTERSECTION. THIS LOCATION IS APPROX. 0.25 MILES WEST.



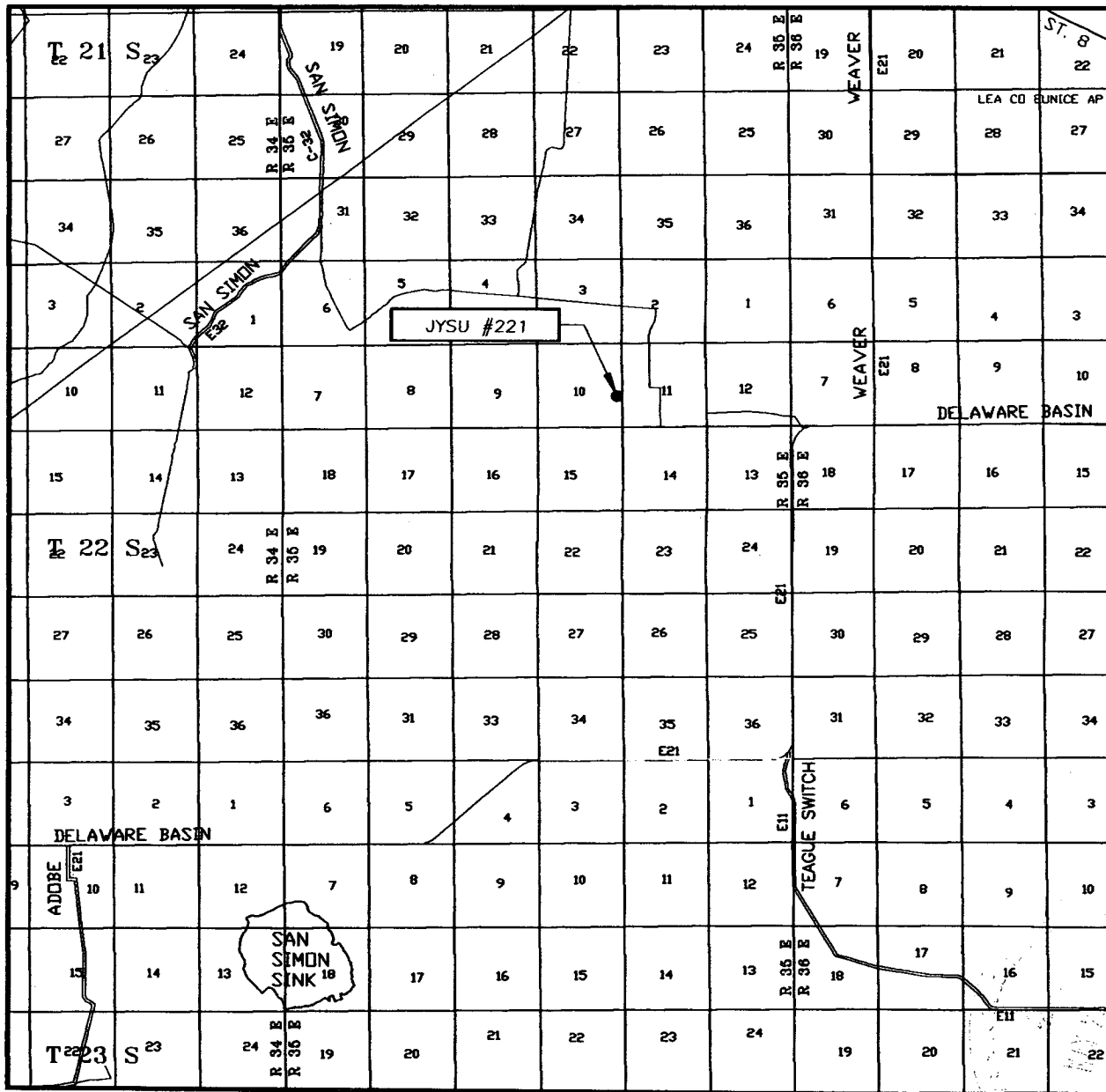
**PROVIDING SURVEYING SERVICES  
 SINCE 1946  
 JOHN WEST SURVEYING COMPANY  
 412 N. DAL PASO  
 HOBBS, N.M. 88240  
 (505) 393-3117**

**MELROSE OPERATING COMPANY**

**JYSU #221 WELL**  
 LOCATED 1980 FEET FROM THE SOUTH LINE  
 AND 330 FEET FROM THE EAST LINE OF SECTION 10,  
 TOWNSHIP 22 SOUTH, RANGE 35 EAST, N.M.P.M.,  
 LEA COUNTY, NEW MEXICO.

Survey Date: 04/27/05	Sheet 1 of 1 Sheets
W.O. Number: 05.11.0657	Dr By: DEL Rev 1:N/A
Date: 04/28/05	Disk: CD#4 05110657 Scale: 1"=100'

# VICINITY MAP



SCALE: 1" = 2 MILES

SEC. 10 TWP. 22-S RGE. 35-E  
 SURVEY N.M.P.M.  
 COUNTY LEA  
 DESCRIPTION 1980' FSL & 330' FEL  
 ELEVATION 3601'  
 OPERATOR MELROSE  
 LEASE OPERATING COMPANY  
 LEASE JYSU

