

District I
1625 N. French Dr., Hobbs, NM 88240
District II
1301 W. Grand Avenue, Artesia, NM 88210
District III
1000 Rio Brazos Road, Aztec, NM 87410
District IV
1220 S. St. Francis Dr., Santa Fe, NM 87505

State of New Mexico
Energy Minerals and Natural Resources

Form C-101
May 27, 2004

Oil Conservation Division
1220 South St. Francis Dr.
Santa Fe, NM 87505

Submit to appropriate District Office

☐ AMENDED REPORT

APPLICATION FOR PERMIT TO DRILL, RE-ENTER, DEEPEN, PLUGBACK, OR ADD A ZONE

¹ Operator Name and Address XTO Energy Inc.		² OGRID Number 005380
		³ API Number 30 - 025 - 37284
⁴ Property Code 300649	⁵ Property Name Arrowhead Grayburg Unit	⁶ Well No. 391
⁹ Proposed Pool 1 Arrowhead Grayburg		¹⁰ Proposed Pool 2

7 Surface Location

UL or lot no.	Section	Township	Range	Lot Idn	Feet from the	North/South line	Feet from the	East/West line	County
3/4	7	22-S	37-E		1180	South	120	West	Lea

8 Proposed Bottom Hole Location If Different From Surface

UL or lot no.	Section	Township	Range	Lot Idn	Feet from the	North/South line	Feet from the	East/West line	County

Additional Well Information

¹¹ Work Type Code N	¹² Well Type Code O	¹³ Cable/Rotary R	¹⁴ Lease Type Code P	¹⁵ Ground Level Elevation 3442'
¹⁶ Multiple No	¹⁷ Proposed Depth 5200'	¹⁸ Formation Grayburg	¹⁹ Contractor N/A	²⁰ Spud Date ASAP
Depth to Groundwater 160'		Distance from nearest fresh water well 1000'+		Distance from nearest surface water 1000'+
Pit: Liner: Synthetic X 12 mils thick Clay <input type="checkbox"/> Pit Volume: 7000 bbls Drilling Method: Fresh Water <input type="checkbox"/> Brine X Diesel/Oil-based <input type="checkbox"/> Gas/Air <input type="checkbox"/>				
Closed-Loop System <input type="checkbox"/>				

21 Proposed Casing and Cement Program

Hole Size	Casing Size	Casing weight/foot	Setting Depth	Sacks of Cement	Estimated TOC
12-1/4"	8-5/8"	24#	1200'	565 sxs	Surf
7-7/8"	5-1/2"	17#	5200'	620	Surf

²² Describe the proposed program. If this application is to DEEPEN or PLUG BACK, give the data on the present productive zone and proposed new productive zone. Describe the blowout prevention program, if any. Use additional sheets if necessary.

XTO Energy, Inc. proposes to:

Drill 12-1/4" hole to 1200', run 8-5/8" casing and cement with Class "C" to surface.
Drill 7-7/8" hole to 5200', run 5-1/2" casing and cement with Class "C" to surface.

Mud Program: 0' to 1200' 8.4 ppb fresh water.
1200' to 5200' 10.0 ppb brine water.

XTO Energy, Inc. Case IV BOPE

**Permit Expires 1 Year From Approval
Date Unless Drilling Underway**

²³ I hereby certify that the information given above is true and complete to the best of my knowledge and belief. I further certify that the drilling pit will be constructed according to NMOCD guidelines ☒, a general permit ☐, or an (attached) alternative OCD-approved plan ☐.

Printed name: DeeAnn Kemp

Title: Regulatory

E-mail Address:

Date: 6/6/06

Phone: 432-620-6724

OIL CONSERVATION DIVISION

Approved by:

Title:

Approval Date:

Expiration Date:

Conditions of Approval ☐

JUN 10 2006

PETROLEUM ENGINEER

DISTRICT I

1225 N. FRENCH DR., ROSA, NM 88260

State of New Mexico

Energy, Minerals and Natural Resources Department

DISTRICT II

1201 W. GRAND AVENUE, ALBUQUERQUE, NM 87102

OIL CONSERVATION DIVISION

1220 SOUTH ST. FRANCIS DR.
Santa Fe, New Mexico 87505

Form C-102

Revised JUNE 10, 2003

Submit to Appropriate District Office

State Lease - 4 Copies

Fee Lease - 3 Copies

DISTRICT III

1000 Rio Brazos Rd., Aztec, NM 87410

DISTRICT IV

1220 S. ST. FRANCIS DR., SANTA FE, NM 87505

WELL LOCATION AND ACREAGE DEDICATION PLAT

☐ AMENDED REPORT

API Number 30-025-37284	Pool Code 3040	Pool Name Arrowhead Grayburg
Property Code 300649	Property Name Arrowhead Grayburg Unit	Well Number 391
OGRIID No. 005380	Operator Name XTO ENERGY	Elevation 3442'

Surface Location

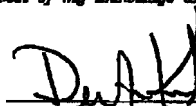
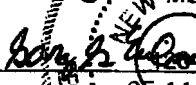
UL or lot No.	Section	Township	Range	Lot Idn	Feet from the	North/South line	Feet from the	East/West line	County
m/4	7	22-S	37-E		1180	SOUTH	120	WEST	LEA

Bottom Hole Location If Different From Surface

UL or lot No.	Section	Township	Range	Lot Idn	Feet from the	North/South line	Feet from the	East/West line	County

Dedicated Acres 37	Joint or Infill N	Consolidation Code	Order No.
------------------------------	-----------------------------	--------------------	-----------

NO ALLOWABLE WILL BE ASSIGNED TO THIS COMPLETION UNTIL ALL INTERESTS HAVE BEEN CONSOLIDATED
OR A NON-STANDARD UNIT HAS BEEN APPROVED BY THE DIVISION

LOT 1					OPERATOR CERTIFICATION I hereby certify the the information contained herein is true and complete to the best of my knowledge and belief.  Signature DeeAnn Kemp Printed Name Regulatory Title 6/6/05 Date
36.96 AC					
LOT 2					
36.98 AC					
LOT 3					SURVEYOR CERTIFICATION I hereby certify that the well location shown on this plat was plotted from field notes of actual surveys made by me or under my supervision, and that the same is true and correct to the best of my belief. APRIL 12, 2005 Date Surveyed Signature  Professional Surveyor GARY EIDSON Registered Professional Surveyor 05110558 Certificate No. 12841
36.98 AC					
LOT 4					
37.00 AC					

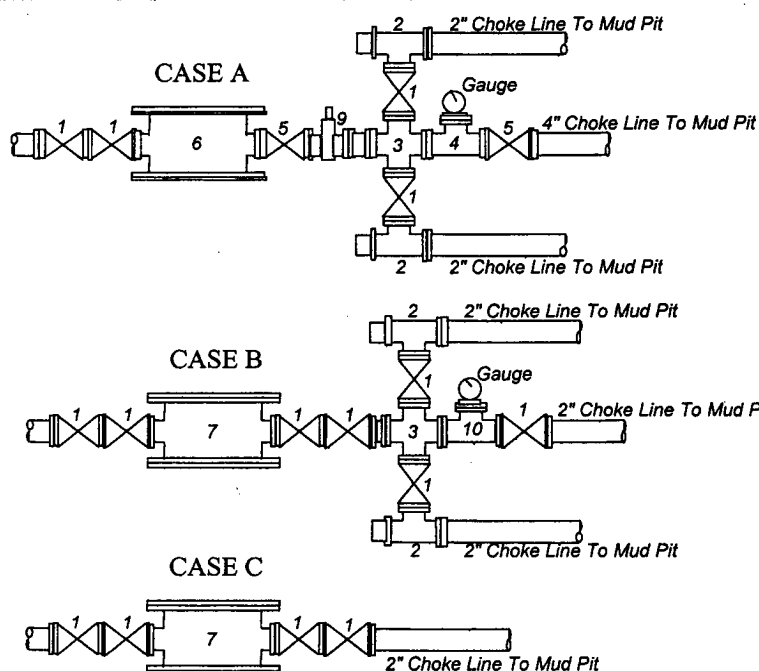
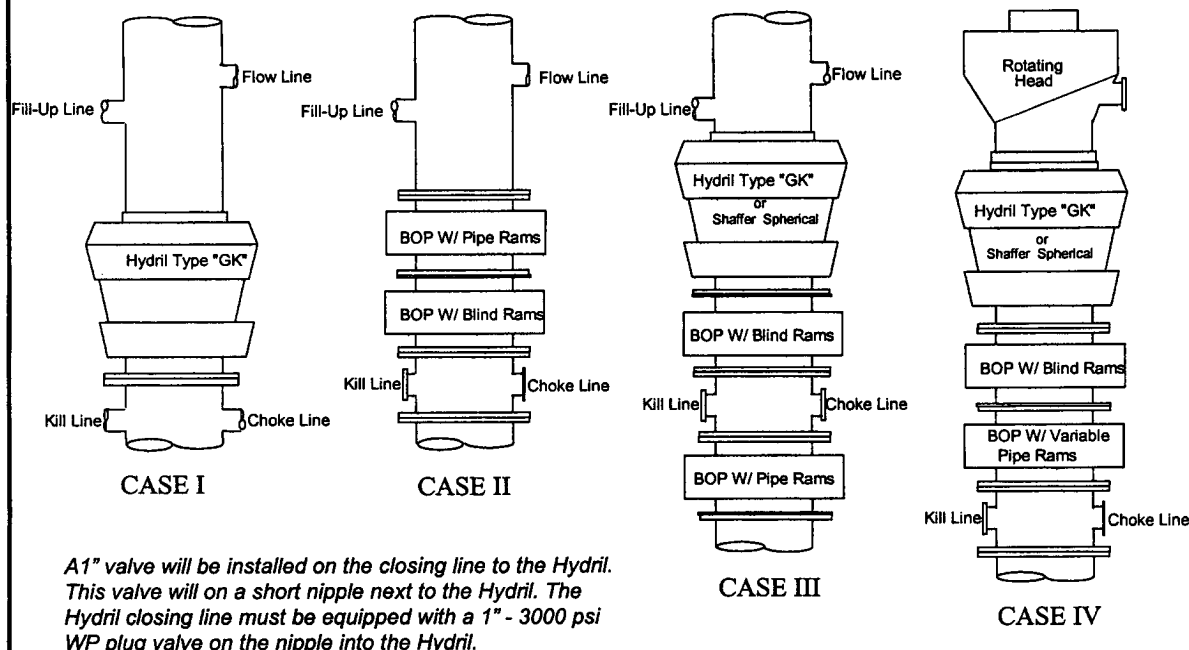
GEODETIC COORDINATES
NAD 27 NME

Y=511869.5 N
X=846828.9 E

LAT.=32°24'08.04" N
LONG.=103°12'34.59" W

120'
 1180'
 120'

MINIMUM BLOWOUT PREVENTER REQUIREMENTS



BOP SIZE	BOP CASE	WORKING PRESSURE	CHOKE CASE
13-5/8"	IV	5000	A

***Rotating head required**

Bradenhead furnished by Conoco will be:
Mfr: **Wood Group**
Description: **13-3/8" x 13-5/8" 3M**
Type: **SOW**

Legend

- 2" flanged all steel valve must be either Cameron "F", Halliburton Low Torque or Shaffer Flo-Seal.
- 2" flanged adjustable chokes, min. 1" full opening & equipped with hard trim.
- 4" x 2" flanged steel cross.
- 4" flanged steel tee.
- 4" flanged all steel valve (Type as in no. 1).
- Drilling Spool with 2" x 4" flanged outlet.
- Drilling Spool with 2" x 2" flanged outlet.
- 2" x 2" flanged steel cross.
- 4" pressure operated gate valve.
- 2" flanged steel tee.

Notes

Choke manifold may be located in any convenient position. Use all steel fittings throughout. Make 90° turns with bull plugged tees only. No field welding will be permitted on any of the components of the choke manifold and related equipment upstream of the chokes. The choke spool and all lines and fittings must be at least equivalent to the test pressure of the preventers required. Independent closing control unit with clearly marked controls to be located on derrick floor near driller's position.