

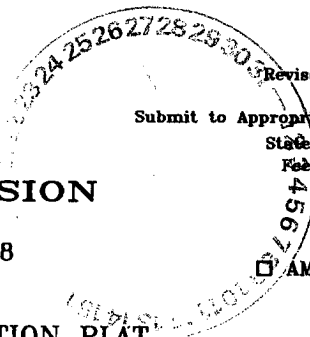
DISTRICT I  
1825 N. French Dr., Hobbs, NM 88240

DISTRICT II  
811 South First, Artesia, NM 88210

DISTRICT III  
1000 Rio Brazos Rd., Aztec, NM 87410

DISTRICT IV  
2040 South Pacheco, Santa Fe, NM 87505

State of New Mexico  
Energy, Minerals and Natural Resources Department



Form C-102  
Revised March 17, 1999

Submit to Appropriate District Office  
State Lease - 4 Copies  
Fee Lease - 3 Copies

**OIL CONSERVATION DIVISION**

2040 South Pacheco  
Santa Fe, New Mexico 87504-2088

AMENDED REPORT

**WELL LOCATION AND ACREAGE DEDICATION PLAT**

API Number 30-025-37151	Pool Code 56280	Pool Name Shoe Bar;Strawn, Northwest
Property Code 24402	Property Name BOYCE "15"	Well Number 6
OGRID No. 147179	Operator Name CHESAPEAKE OPERATING INC.	Elevation 3988'

Surface Location

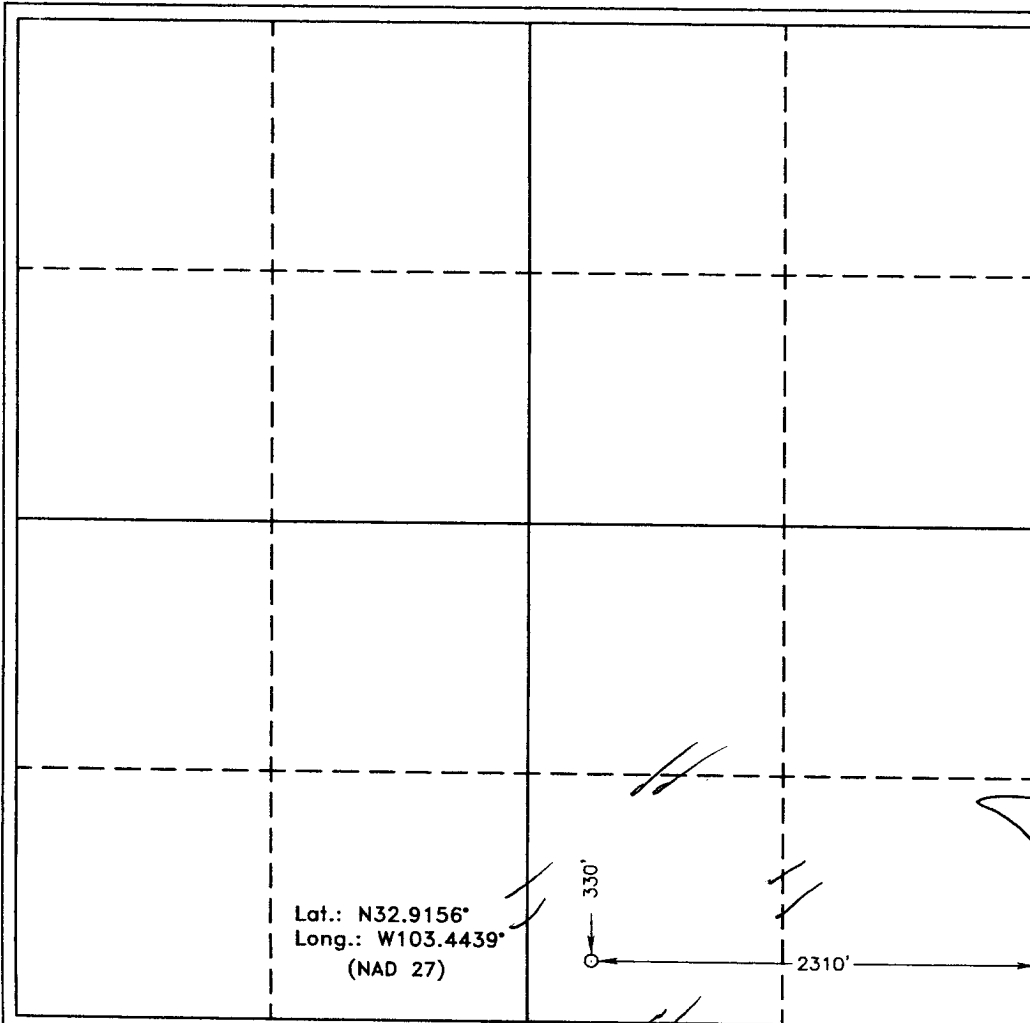
UL or lot No.	Section	Township	Range	Lot Idn	Feet from the	North/South line	Feet from the	East/West line	County
0	15	16 S	35 E		330	SOUTH	2310	EAST	LEA

Bottom Hole Location If Different From Surface

UL or lot No.	Section	Township	Range	Lot Idn	Feet from the	North/South line	Feet from the	East/West line	County

Dedicated Acres 40	Joint or Infill	Consolidation Code	Order No.
-----------------------	-----------------	--------------------	-----------

NO ALLOWABLE WILL BE ASSIGNED TO THIS COMPLETION UNTIL ALL INTERESTS HAVE BEEN CONSOLIDATED OR A NON-STANDARD UNIT HAS BEEN APPROVED BY THE DIVISION



**OPERATOR CERTIFICATION**

I hereby certify the the information contained herein is true and complete to the best of my knowledge and belief.

*Brenda Coffman*  
Signature  
Brenda Coffman  
Printed Name  
Regulatory Analyst  
Title  
June 23, 2005  
Date

---

**SURVEYOR CERTIFICATION**

I hereby certify that the well location shown on this plat was plotted from field notes of actual surveys made by me or under my supervision, and that the same is true and correct to the best of my belief.

MARCH 8, 2005  
Date Surveyed  
L. JONES  
Signature & Seal of Professional Surveyor  
W.O. No. 8111  
Certificate No. Gary L. Jones 7977

**BASIN SURVEYS**