

District I  
1625 N. French Dr., Hobbs, NM 88240  
District II  
1301 W. Grand Avenue, Artesia, NM 88210  
District III  
1000 Rio Brazos Road, Aztec, NM 87410  
District IV  
1220 S. St. Francis Dr., Santa Fe, NM 87505

State of New Mexico  
Energy Minerals and Natural Resources

Form C-101  
May 27, 2004

Oil Conservation Division  
1220 South St. Francis Dr.  
Santa Fe, NM 87505

Submit to appropriate District Office

☐ AMENDED REPORT

**APPLICATION FOR PERMIT TO DRILL, RE-ENTER, DEEPEN, PLUGBACK, OR ADD A ZONE**

<sup>1</sup> Operator Name and Address XTO Energy Inc.		<sup>2</sup> OGRID Number 005380
		<sup>3</sup> API Number 30 - 025- 37321
<sup>4</sup> Property Code 300717	<sup>5</sup> Property Name Eunice Monument South Unit	
		<sup>6</sup> Well No. 713
<sup>9</sup> Proposed Pool 1 Eunice Monument; Grayburg-Andres		<sup>10</sup> Proposed Pool 2

**7 Surface Location**

UL or lot no. O	Section 9	Township 21-S	Range 36-E	Lot Idn	Feet from the 1310	North/South line South	Feet from the 2205	East/West line East	County Lea
--------------------	--------------	------------------	---------------	---------	-----------------------	---------------------------	-----------------------	------------------------	---------------

**8 Proposed Bottom Hole Location If Different From Surface**

UL or lot no.	Section	Township	Range	Lot Idn	Feet from the	North/South line	Feet from the	East/West line	County
---------------	---------	----------	-------	---------	---------------	------------------	---------------	----------------	--------

**Additional Well Information**

<sup>11</sup> Work Type Code N	<sup>12</sup> Well Type Code O	<sup>13</sup> Cable/Rotary R	<sup>14</sup> Lease Type Code P	<sup>15</sup> Ground Level Elevation 3586'
<sup>16</sup> Multiple No	<sup>17</sup> Proposed Depth 5450'	<sup>18</sup> Formation Grayburg	<sup>19</sup> Contractor N/A	<sup>20</sup> Spud Date ASAP
Depth to Groundwater 160'		Distance from nearest fresh water well 1000'+		Distance from nearest surface water 1000'+
Pit: Liner: Synthetic X 12 mils thick Clay <input type="checkbox"/> Pit Volume: 7000 bbls Drilling Method: Closed-Loop System <input type="checkbox"/> Fresh Water <input type="checkbox"/> Brine <input checked="" type="checkbox"/> Diesel/Oil-based <input type="checkbox"/> Gas/Air <input type="checkbox"/>				

**21 Proposed Casing and Cement Program**

Hole Size	Casing Size	Casing weight/foot	Setting Depth	Sacks of Cement	Estimated TOC
12-1/4"	8-5/8"	24#	1200'	565 sxs	Surf
7-7/8"	5-1/2"	17#	5450'	660'	Surf


<sup>22</sup> Describe the proposed program. If this application is to DEEPEN or PLUG BACK, give the data on the present productive zone and proposed new productive zone. Describe the blowout prevention program, if any. Use additional sheets if necessary.

XTO Energy, Inc. proposes to:  
Drill 12-1/4" hole to 1200', run 8-5/8" casing and cement with Class "C" to surface.  
Drill 7-7/8" hole to 5450', run 5-1/2" casing and cement with Class "C" to surface.

Mud Program: 0' to 1200' 8.4 ppg fresh water.  
1200' to 5450' 10.0 ppg brine water.

XTO Energy, Inc. Case IV BOPE

**Permit Expires 1 Year From Approval  
Date Unless Drilling Underway**

<sup>23</sup> I hereby certify that the information given above is true and complete to the best of my knowledge and belief. I further certify that the drilling pit will be constructed according to NMOCD guidelines <input checked="" type="checkbox"/> , a general permit <input type="checkbox"/> , or an (attached) alternative OCD-approved plan <input type="checkbox"/> .		<b>OIL CONSERVATION DIVISION</b>	
Printed name: DeeAnn Kemp		Approved by: 	
Title: Regulatory		Title: <b>PETROLEUM ENGINEER</b>	
E-mail Address:		Approval Date:	Expiration Date:
Date: 6/27/05		<b>JUN 30 2005</b>	
Phone: 432-620-6724		Conditions of Approval Attached <input type="checkbox"/>	

State of New Mexico

DISTRICT I

1625 N. FRENCH DR., HOBBS, NM 88240

Energy, Minerals and Natural Resources Department

Form C-102

DISTRICT II

1301 GRAND AVENUE, ARTESIA, NM 88210

OIL CONSERVATION DIVISION

1220 SOUTH ST. FRANCIS DR.  
Santa Fe, New Mexico 87505

Revised JUNE 10, 2003

Submit to Appropriate District Office

State Lease - 4 Copies

Fee Lease - 3 Copies

DISTRICT III

1000 Rio Brazos Rd., Aztec, NM 87410

DISTRICT IV

1220 S. ST. FRANCIS DR., SANTA FE, NM 87505

WELL LOCATION AND ACREAGE DEDICATION PLAT

☐ AMENDED REPORT

API Number <b>30-025-37321</b>	Pool Code <b>23000</b>	Pool Name <b>Eunice Monument:Grayburg: San Andres</b>
Property Code <b>300717</b>	Property Name <b>Eunice Monument South Unit</b>	Well Number <b>713</b>
OGRID No. <b>005380</b>	Operator Name <b>XTO ENERGY</b>	Elevation <b>3586'</b>

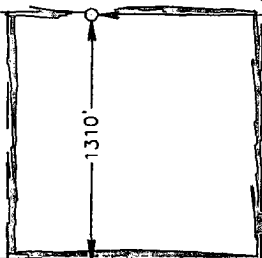
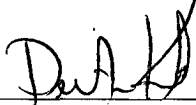
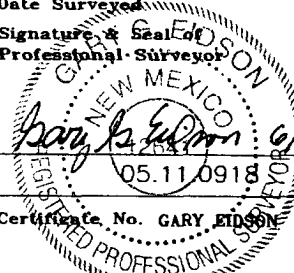
Surface Location

UL or lot No.	Section	Township	Range	Lot Idn	Feet from the	North/South line	Feet from the	East/West line	County
0	9	21-S	36-E		1310	SOUTH	2205	EAST	LEA

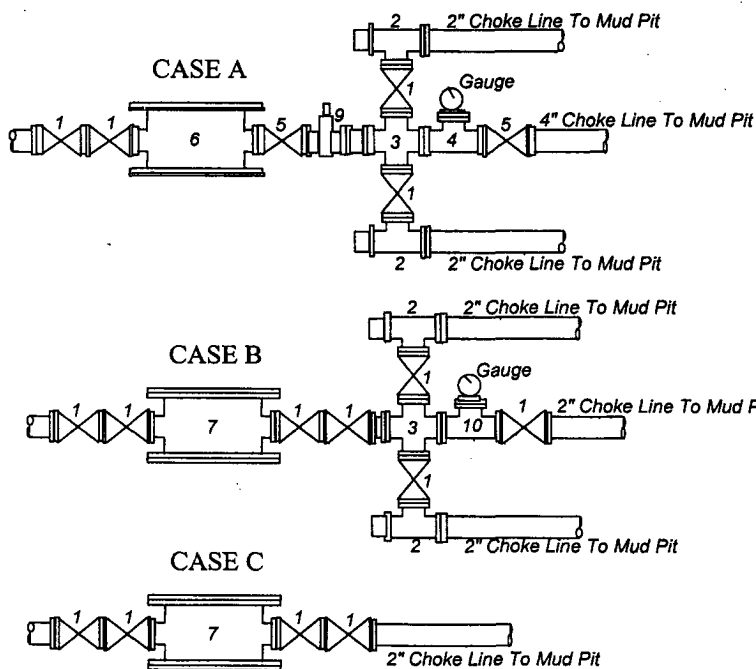
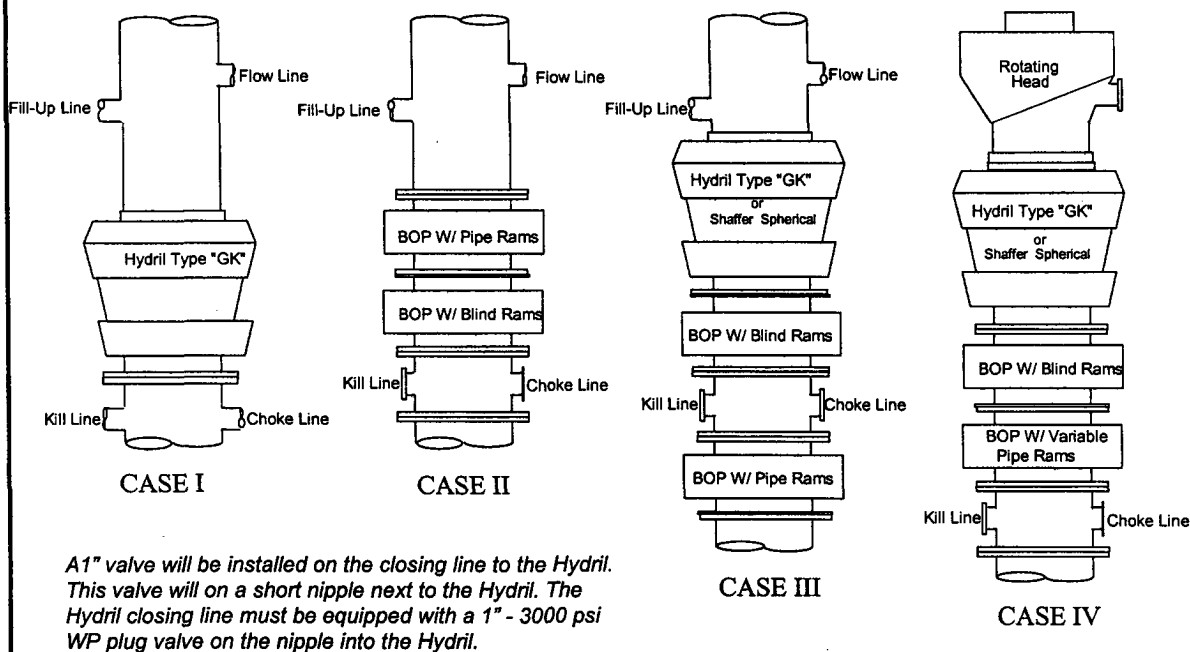
Bottom Hole Location If Different From Surface

UL or lot No.	Section	Township	Range	Lot Idn	Feet from the	North/South line	Feet from the	East/West line	County
Dedicated Acres <b>40</b>		Joint or Infill		Consolidation Code		Order No.			

NO ALLOWABLE WILL BE ASSIGNED TO THIS COMPLETION UNTIL ALL INTERESTS HAVE BEEN CONSOLIDATED  
OR A NON-STANDARD UNIT HAS BEEN APPROVED BY THE DIVISION

<p>GEODETIC COORDINATES NAD 27 NME</p> <p>Y=543471.2 N X=828347.1 E</p> <p>LAT.=32°29'22.59" N LONG.=103°16'06.45" W</p> 	<p><b>OPERATOR CERTIFICATION</b></p> <p>I hereby certify the the information contained herein is true and complete to the best of my knowledge and belief.</p> <p></p> <p>Signature</p> <p><u>DeeAnn Kemp</u></p> <p>Printed Name</p> <p>Regulatory</p> <p>Title</p> <p><u>6/27/05</u></p> <p>Date</p>
	<p><b>SURVEYOR CERTIFICATION</b></p> <p>I hereby certify that the well location shown on this plat was plotted from field notes of actual surveys made by me or under my supervision, and that the same is true and correct to the best of my belief.</p> <p>JUNE 14, 2005</p> <p>Date Surveyed</p> <p>Signature &amp; Seal of Professional Surveyor</p> <p></p> <p>Certificate No. GARY EDSON 12641</p>

# MINIMUM BLOWOUT PREVENTER REQUIREMENTS



BOP SIZE	BOP CASE	WORKING PRESSURE	CHOKE CASE
13-5/8"	IV	5000	A

**\*Rotating head required**

Bradenhead furnished by Conoco will be:  
Mfr: **Wood Group**  
Description: **13-3/8" x 13-5/8" 3M**  
Type: **SOW**

## Legend

1. 2" flanged all steel valve must be either Cameron "F", Halliburton Low Torque or Shaffer Flo-Seal.
2. 2" flanged adjustable chokes, min. 1" full opening & equipped with hard trim.
3. 4" x 2" flanged steel cross.
4. 4" flanged steel tee.
5. 4" flanged all steel valve (Type as in no. 1).
6. Drilling Spool with 2" x 4" flanged outlet.
7. Drilling Spool with 2" x 2" flanged outlet.
8. 2" x 2" flanged steel cross.
9. 4" pressure operated gate valve.
10. 2" flanged steel tee.

## Notes

Choke manifold may be located in any convenient position. Use all steel fittings throughout. Make 90° turns with bull plugged tees only. No field welding will be permitted on any of the components of the choke manifold and related equipment upstream of the chokes. The choke spool and all lines and fittings must be at least equivalent to the test pressure of the preventers required. Independent closing control unit with clearly marked controls to be located on derrick floor near driller's position.