

New Mexico Oil Conservation Division, District I  
1625 N. French Drive  
Hobbs, NM 88240

Form 3160-3  
(August 1999)

UNITED STATES  
DEPARTMENT OF THE INTERIOR  
BUREAU OF LAND MANAGEMENT

APPLICATION FOR PERMIT TO DRILL OR REENTER

1a. Type of Work: ☒ DRILL ☐ REENTER

b. Type of Well: ☒ Oil Well ☐ Gas Well ☐ Other ☐ Single Zone ☒ Multiple Zone

2. Name of Operator  
Yates Petroleum Corporation 25575

3A. Address 105 South Fourth Street  
Artesia, New Mexico 88210

3b. Phone No. (include area code)  
(505) 748-1471

4. Location of Well (Report location clearly and in accordance with any State requirements. \*)  
At surface 330' FSL and 1650' FWL, Unit letter N  
At proposed prod. Zone same as above

14. Distance in miles and direction from nearest town or post office\*  
Approximately thirty-five (38) miles west & north of Jal, New Mexico

15. Distance from proposed\* location to nearest property or lease line, ft. (Also to nearest drig. unit line, if any)  
330'

16. No. of Acres in lease  
1760

17. Spacing Unit dedicated to this well  
40

19. Proposed Depth  
8600'

20. BLM/BIA Bond No. on file  
NM-2811

21. Elevations (Show whether DF, KDB, RT, GL, etc.)  
3547' GL

22. Approximate date work will start\*  
ASAP

23. Estimated duration  
30 Days

24. Attachments  
Cristed Controlled Water Basin

The following, completed in accordance with the requirements of Onshore Oil and Gas Order No. 1, shall be attached to this form:

1. Well plat certified by a registered surveyor.
2. A Drilling Plan.
3. A Surface Use Plan (if the location is on National Forest System Lands, the SUPO shall be filed with the appropriate Forest Service Office.

4. Bond to cover the operations unless covered by an existing bond on file (see Item 20 above).
5. Operator certification.
6. Such other site specific information and/or plans as may be required by the authorized office.

25. Signature  
Clifton R. May

Name (Printed/Typed)  
Clifton R. May

Date  
4/18/05

Title:  
Regulatory Agent /Land Department email: cliff@ypcnm.com

Approved by (Signature)  
/s/ Tony J. Herrell

Name (Printed/Typed)  
/s/ Tony J. Herrell

Date  
JUN 28 2005

Title  
FIELD MANAGER

Office  
CARLSBAD FIELD OFFICE

Application approval does not warrant or certify that the applicant holds legal or equitable title to those rights in the subject lease which would entitle the applicant to conduct operations thereon.

Conditions of approval, if any, are attached.

APPROVAL FOR 1 YEAR

Title 18 U.S.C. Section 1001 and Title 43 U.S.C. Section 1212, make it a crime for any person knowingly and willfully to make to any department or agency of the United States any false, fictitious or fraudulent statements or representations as to any matter within its jurisdiction.

\*(Instructions on reverse)

APPROVAL SUBJECT TO  
GENERAL REQUIREMENTS AND  
SPECIAL STIPULATIONS  
ATTACHED

DECLARED WATER BASIN  
CEMENT BEHIND THE 13 3/8"  
CASING MUST BE CIRCULATED

WITNESS

Previously Approved

District I  
1625 N. French, Dr. Hobbs, NM 88240

District II  
511 South First, Artesia, NM 88210

District III  
1000 Rio Brazos Rd., Aztec NM 87410

District IV  
2040 South Pacheco, Santa Fe, NM 87505

State of New Mexico  
Energy, Minerals & Natural Resources

OIL CONSERVATION DIVISION

2040 South Pacheco  
Santa Fe, N M 87505

Form C-102

Revised March 17, 1999  
Submit to Appropriate District Office  
State Lease - 4 Copies  
Fee Lease - 3 Copies

☐ AMENDED REPORT

WELL LOCATION AND ACREAGE DEDICATION PLAT

API Number <b>30-025-37347</b>	Pool Code <b>29380</b>	Pool Name <b>LIVINGSTON RIDGE, DELAWARE EAST SE</b>
Property Code <b>30801</b>	Property Name <b>AMAZING BAZ FEDERAL</b>	Well Number <b>6</b>
OGRID No. <b>025575</b>	Operation Name <b>YATES PETROLEUM CORPORATION</b>	Elevation <b>3547</b>

Surface Location

UL or Lot No. <b>N</b>	Section <b>29</b>	Township <b>22-S</b>	Range <b>32-E</b>	Lot Idn.	Feet from the <b>330</b>	North/South line <b>SOUTH</b>	Feet from the <b>1650</b>	East/West line <b>WEST</b>	County <b>LEA</b>
---------------------------	----------------------	-------------------------	----------------------	----------	-----------------------------	----------------------------------	------------------------------	-------------------------------	----------------------

Bottom Hole Location If Different From Surface

UL or Lot No.	Section	Township	Range	Lot Idn.	Feet from the	North/South line	Feet from the	East/West line	County
Dedicated Acres <b>40</b>	Joint or Infill	Consolidation Code	Order No.						

NO ALLOWABLE WILL BE ASSIGNED TO THIS COMPLETION UNTIL ALL INTEREST HAVE BEEN CONSOLIDATED OR A NON-STANDARD UNIT HAS BEEN APPROVED BY THE DIVISION

	OPERATOR CERTIFICATION I HEREBY CERTIFY THAT THE INFORMATION HEREIN IS TRUE AND CORRECT TO THE BEST OF MY KNOWLEDGE AND BELIEF.	
	Signature <b>Clifton R. May</b>	
	Printed Name <b>CLIFTON R. MAY</b>	
	Title <b>REGULATORY AGENT</b>	
	Date <b>8/18/05</b>	
	SURVEYOR CERTIFICATION I HEREBY CERTIFY THAT THE WELL LOCATION SHOWN ON THIS PLAT WAS PLOTTED FROM FIELD NOTES OF ACTUAL SURVEYS MADE BY ME OR UNDER MY SUPERVISION, AND THAT THE SAME IS TRUE AND CORRECT TO THE BEST OF MY KNOWLEDGE AND BELIEF.	
	APRIL 8, 2005 Date of Survey	
	Signature and Seal of Professional Surveyor 	
Certificate Number <b>NM PE&amp;ES #5412</b>		

# YATES PETROLEUM CORPORATION

## Amazing BAZ Federal #6

330' FSL and 1650' FWL

Section 29-T22S-R32E

Lea County, New Mexico

1. The estimated tops of geologic markers are as follows:

Rustler	800'
Top of Salt	950'
Bottom of Salt	4345'
Bell Canyon	4650'
Cherry Canyon	5540'
Brushy Draw	6830'
Bone Spring	8480'
TD	8600'

2. The estimated depths at which anticipated water, oil or gas formations are expected to be encountered:

Water: 250' to 500'  
Oil or Gas: 6830' & 8480'.

3. Pressure Control Equipment: BOPE will be installed on the 13 3/8" casing and rated for 3000# BOP Systems will be consistent with API RP 53. Pressure tests will be conducted before drilling out from under all casing strings, which are set and cemented in place. Blowout Preventor controls will be installed prior to drilling the surface plug and will remain in use until the well is completed or abandoned. Preventors will be inspected and operated at least daily to ensure good mechanical working order, and this inspection recorded on the daily drilling report. See Exhibit B.
4. Auxiliary Equipment: Kelly cock, pit level indicators, flow sensor equipment, and a sub with full opening valve to fit the drill pipe and collars will be available on the rig floor in the open position at all times for use when Kelly is not in use.
5. THE PROPOSED CASING AND CEMENTING PROGRAM:

### A. Casing Program:

<u>Hole Size</u>	<u>Casing Size</u>	<u>Wt./Ft</u>	<u>Grade</u>	<u>Coupling</u>	<u>Interval</u>	<u>Length</u>
17 1/2"	13 3/8"	48#	H-40	ST&C	0-900'	900'
11"	8 5/8"	32#	J-55	ST&C	0-4500'	4500'
7 7/8"	5 1/2"	17#	J-55	LT&C	0-100'	100'
7 7/8"	5 1/2"	15.5#	J-55	LT&C	100-7400'	7300'
7 7/8"	5 1/2"	17#	J-55	LT&C	7400-8600'	1200'

1. Minimum Casing Design Factors: Collapse 1.125, Burst 1.0, and Tensile Strength 1.8
2. A 3,000 psi BOP will be nipped up on the 13 3/8" casing and tested to 3000 psi .

### B. CEMENTING PROGRAM:

Surface Casing: 650 sx Lite (YLD 1.96 WT 12.7). Tail in with 200 sx class "C" + 2% CaCl<sub>2</sub> (YLD 1.34 WT 14.8).

Intermediate Casing: 925 sx Lite (YLD 2.5 WT 11.9) and tail in with 200 sx "C" + 2% CaCl<sub>2</sub> (YLD 1.34 WT 14.8). Cement circulated to surface.

Production Casing: 1 st Stage: 550 sx super "H" (YLD 1.67 WT 13), Tail in w/50 sx Thixset (YLD 1.4 WT 14.4). Top of Cement approx. 6000'.

DV Tool Packer @ 4450'

Second Stage: 650 sx Lite (YLD 2.5 WT 11.9) , Tail in w/50 sx Premium (YLD 1.3 WT 14.8).

6. MUD PROGRAM AND AUXILIARY EQUIPMENT:

<u>Interval</u>	<u>Type</u>	<u>Weight</u>	<u>Viscosity</u>	<u>Fluid Loss</u>
0-900	FW/Native Mud	8.6-9.2	28-36	N/C
900-4500	Brine	10.0-10.2	28	N/C
4500-6800	Cut Brine	8.6-9.1	28	N/C
6800-TD	Cut Brine/Starch	8.6-9.1	28-32	<15

Sufficient mud material(s) to maintain mud properties, control lost circulation and contain a blow out will be available at the well site during drilling operations. Rig personnel will check mud hourly.

7. EVALUATION PROGRAM:

Samples: Every 10' from surface casing to TD

Logging: CNL-FCO from TD to casing with GR-CNL up to surface; DLL from TD to casing

Coring: None anticipated

DST's: Any tests will be based on the recommendations of the well site geologist as Warranted by drilling breaks and shows

8. ABNORMAL CONDITIONS, BOTTOM HOLE PRESSURE, AND POTENTIAL HAZARDS:

Abnormal Pressures Anticipated: None

Lost Circulation Zones Anticipated: None.

H<sub>2</sub>S Zones Anticipated: None Anticipated

Maximum Bottom Hole Temperature: 140 F

9. ANTICIPATED STARTING DATE:

Plans are to drill this well as soon as possible after receiving approval. It should take approximately 15 days to drill the well with completion taking another 20 days.

**MULTI-POINT SURFACE USE AND OPERATIONS PLAN**  
**YATES PETROLEUM CORPORATION**  
**Amazing BAZ Federal #6**  
330' FSL & 1650' FWL  
Section 29-T22S-R32E  
Lea County, New Mexico

This plan is submitted with Form 3160-3, Application for Permit to Drill, covering the above described well. The purpose of this plan is to describe the location of the proposed well, the proposed construction activities and operations plan, the magnitude of the surface disturbance involved and the procedures to be followed in rehabilitating the surface after completion of the operations, so that a complete appraisal can be made of the environmental effect associated with the operations.

1. EXISTING ROADS:

Exhibit A is a portion of the BLM map showing the well and roads in the vicinity of the proposed location. The proposed well site is located approximately 38 miles west and north of Jal, New Mexico and the access route to the location is indicated in red and green on Exhibit A.

**DIRECTIONS:** Go east out of Carlsbad, New Mexico on 62/180 to the Halfway Watering Hole. Continue east for approximately 0.7 of a mile to Campbell Road (C-29). Turn south and go approximately 14 miles to a lease road on the east side of the road. Turn east and go approximately 2 miles and the new road will start here just west of an existing location. Go north approximately 0.15 of a mile to the south west corner of the #3 pad. Turn east and go approximately 0.4 of a mile to the south west corner of the pad.

2. PLANNED ACCESS ROAD:

- A. The proposed new access will be approximately 3800' in length from the point of origin to the southwest corner of the drilling pad.
- B. The new road will be 14 feet in width (driving surface) and will be adequately drained to control runoff and soil erosion.
- C. The new road will be bladed with drainage on both sides. One traffic turnout may be needed.
- D. The route of the road is visible.
- E. Existing roads will be maintained in the same or better condition.

3. LOCATION OF EXISTING WELL:

- A. There is drilling activity within a one-mile radius of the well site.
- B. Exhibit D shows existing wells within a one-mile radius of the proposed well site.

4. LOCATION OF EXISTING AND/OR PROPOSED FACILITIES:

- A. There are production facilities on this lease at the present time.
- B. In the event that the well is productive, the necessary production facilities will be installed on the drilling pad. If the well is productive oil, a gas or diesel self-contained unit will be used to provide the necessary power until an electric line can be built. No power will be required if the well is a producing gas well.

**Amazing BAZ Federal #6**  
**Page Two**

5. LOCATION AND TYPE OF WATER SUPPLY:

- A. It is planned to drill the proposed well with a brine water system. The water will be obtained from commercial sources and will be hauled to the location by truck over the existing and proposed roads shown in Exhibit A.

6. SOURCE OF CONSTRUCTION MATERIALS:

The dirt contractor will be responsible for finding a source of material for construction of road and pad and will obtain any permits that may be required.

7. METHODS OF HANDLING WASTE DISPOSAL:

- A. Drill cuttings will be disposed of in the reserve pits.
- B. The reserve pits will be constructed and reclamation done according to NMOCD guidelines and Yates' approved pit general plan
- C. Drilling fluids will be allowed to evaporate in the reserve pits until the pits are dry.
- D. Water produced during operations will be collected in tanks until hauled to an approved disposal system, or separate disposal application will be submitted.
- E. Oil produced during operations will be stored in tanks until sold.
- F. Current laws and regulations pertaining to the disposal of human waste will be complied with.
- G. All trash, junk, and other waste materials will be contained in trash cages or bins to prevent scattering and will be removed and deposited in an approved sanitary landfill. Burial on site is not approved.

8. ANCILLARY FACILITIES: NONE

9. WELLSITE LAYOUT:

- A. Exhibit C shows the relative location and dimensions of the well pad, the reserve pits, the location of the drilling equipment, pulling unit orientation and access road approach. Note: Pits to north.
- B. The reserve pits will be plastic lined with 12 mil and meet the NMOCD Pit Standards.
- C. A 600' x 600' area has been staked and flagged.

10. PLANS FOR RESTORATION:

- A. After finishing drilling and/or completion operations, all equipment and other material not needed for further operations will be removed. The location will be cleaned of all trash and junk to leave the well site in as aesthetically pleasing a condition as possible.
- B. Unguarded pits, if any, containing fluids will be fenced until they have dried and been leveled.
- C. If the proposed well is plugged and abandoned, all rehabilitation and/or vegetation requirements of the Bureau of Land Management will be complied with and will be accomplished as expeditiously as possible. All pits will be filled level after they have evaporated and dried. Pit reclamation will meet Rule 50 requirements.

**Amazing BAZ Federal #6**  
**Page Three**

11. SURFACE OWNERSHIP:

Federal Lands under the supervision of the BLM. Surface leased to Mills Family Partnership.

12. OTHER INFORMATION:

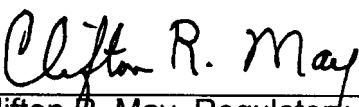
- A. This well is on Federal surface leased to the Mills Family Partnership.
- B. The primary use of the surface is for grazing.
- C. Refer to the archaeological report for a description of the topography, flora, fauna, soil Characteristics, dwellings, and historical and cultural sites.

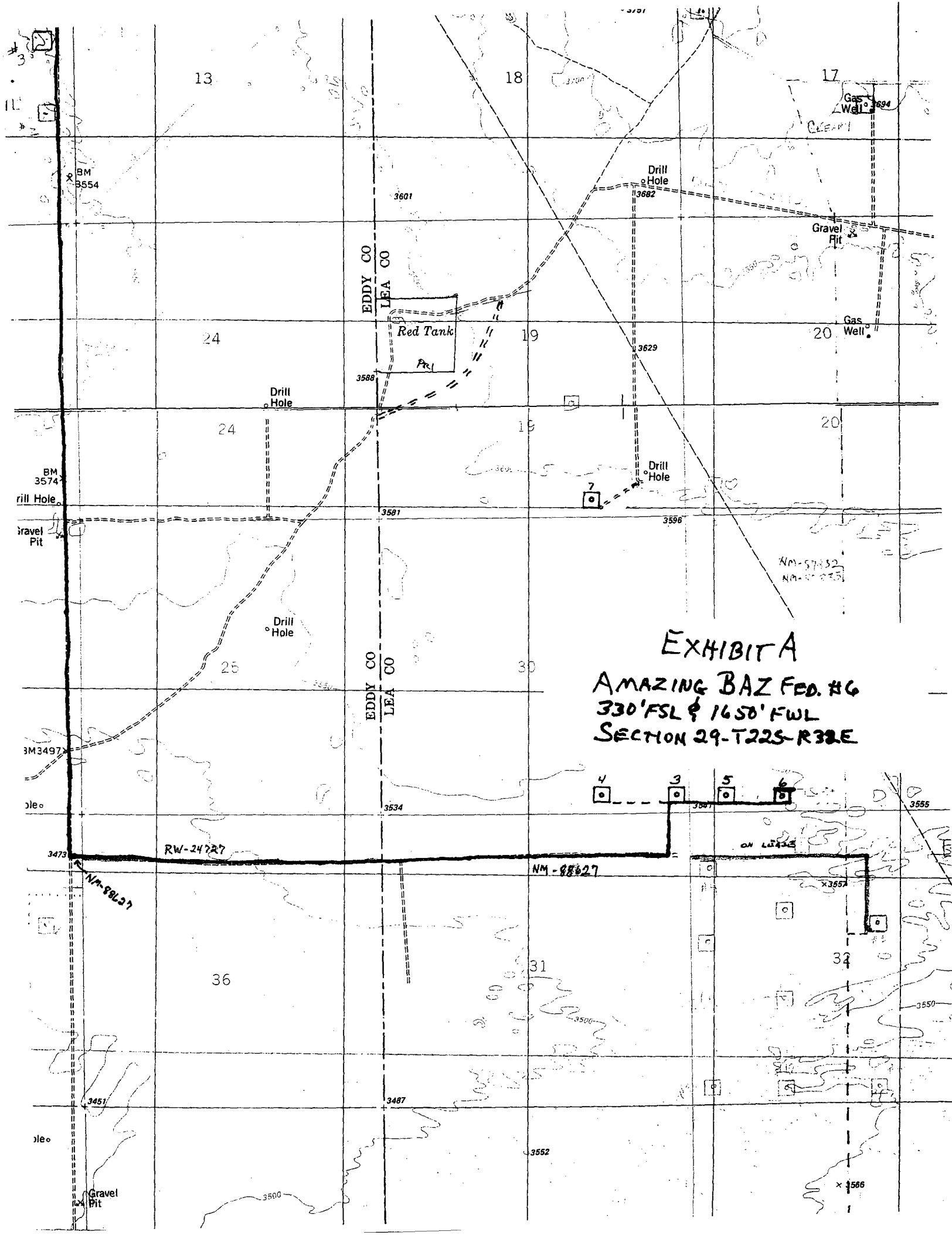
13. OPERATOR'S REPRESENTATIVE:

- |                                                                                                                                                                                |                                                                                                                                                                                                 |
|--------------------------------------------------------------------------------------------------------------------------------------------------------------------------------|-------------------------------------------------------------------------------------------------------------------------------------------------------------------------------------------------|
| A. Through A.P.D. Approval:<br>Clifton R. May, Regulatory Agent<br>Yates Petroleum Corporation<br>105 South Fourth Street<br>Artesia, New Mexico 88210<br>Phone (505) 748-1471 | B. Through Drilling, Completions & Prod.<br>Pinson McWhorter, Operations Manager<br>Yates Petroleum Corporation<br>105 South Fourth Street<br>Artesia, New Mexico 88210<br>Phone (505) 748-1471 |
|--------------------------------------------------------------------------------------------------------------------------------------------------------------------------------|-------------------------------------------------------------------------------------------------------------------------------------------------------------------------------------------------|

14. CERTIFICATION:

I hereby certify that I, or persons under my direct supervision, have inspected the proposed drill site and access route, that I am familiar with the conditions which presently exist; that the statements made in this plan are to the best of my knowledge, true and correct; and, that the work associated with the operations proposed herein will be performed by Yates Petroleum Corporation and its contractors and subcontractors in conformity with this plan and the terms and conditions under which it is approved. This statement is subject to the provisions of 18 U.S.C. 1001 for the filing of a false statement.

  
\_\_\_\_\_  
Clifton R. May, Regulatory Agent





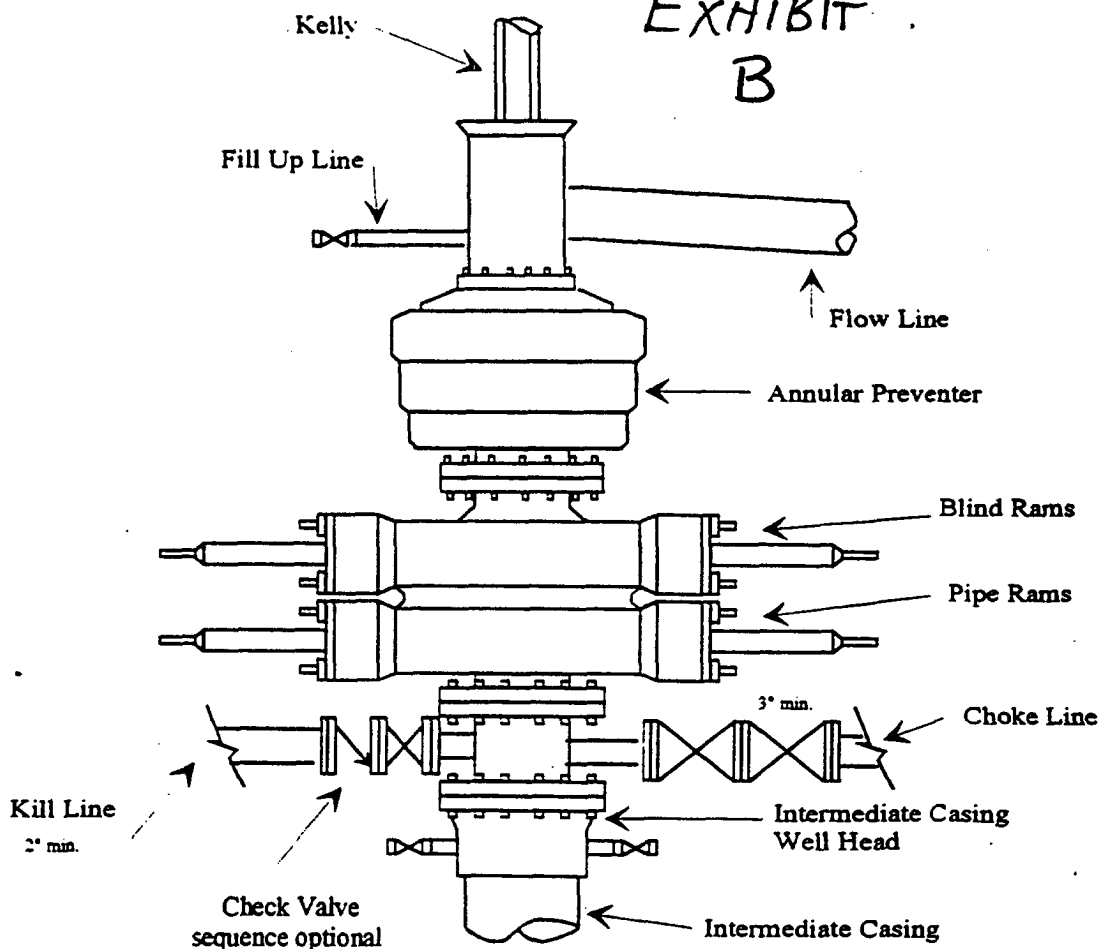


# Yates Petroleum Corporation

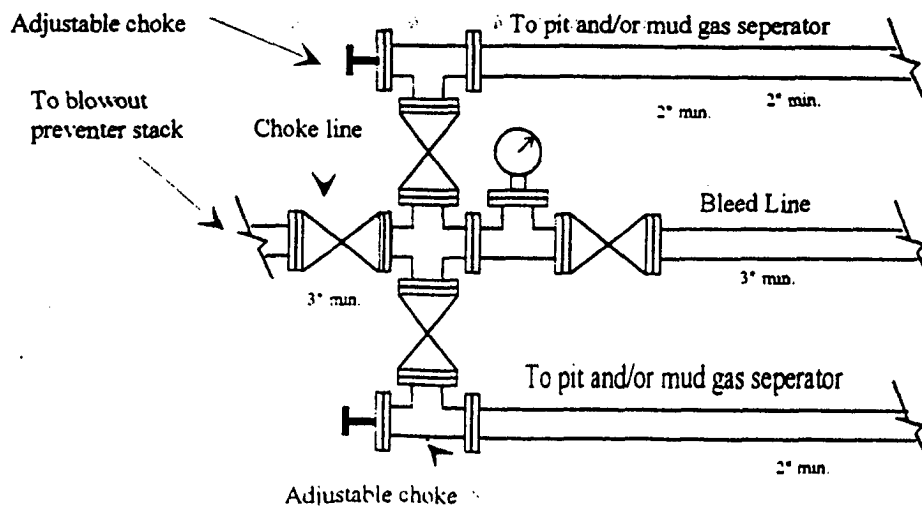
BOP-3

Typical 3,000 psi Pressure System  
Schematic  
Annular with Double Ram Preventer Stack

EXHIBIT  
B



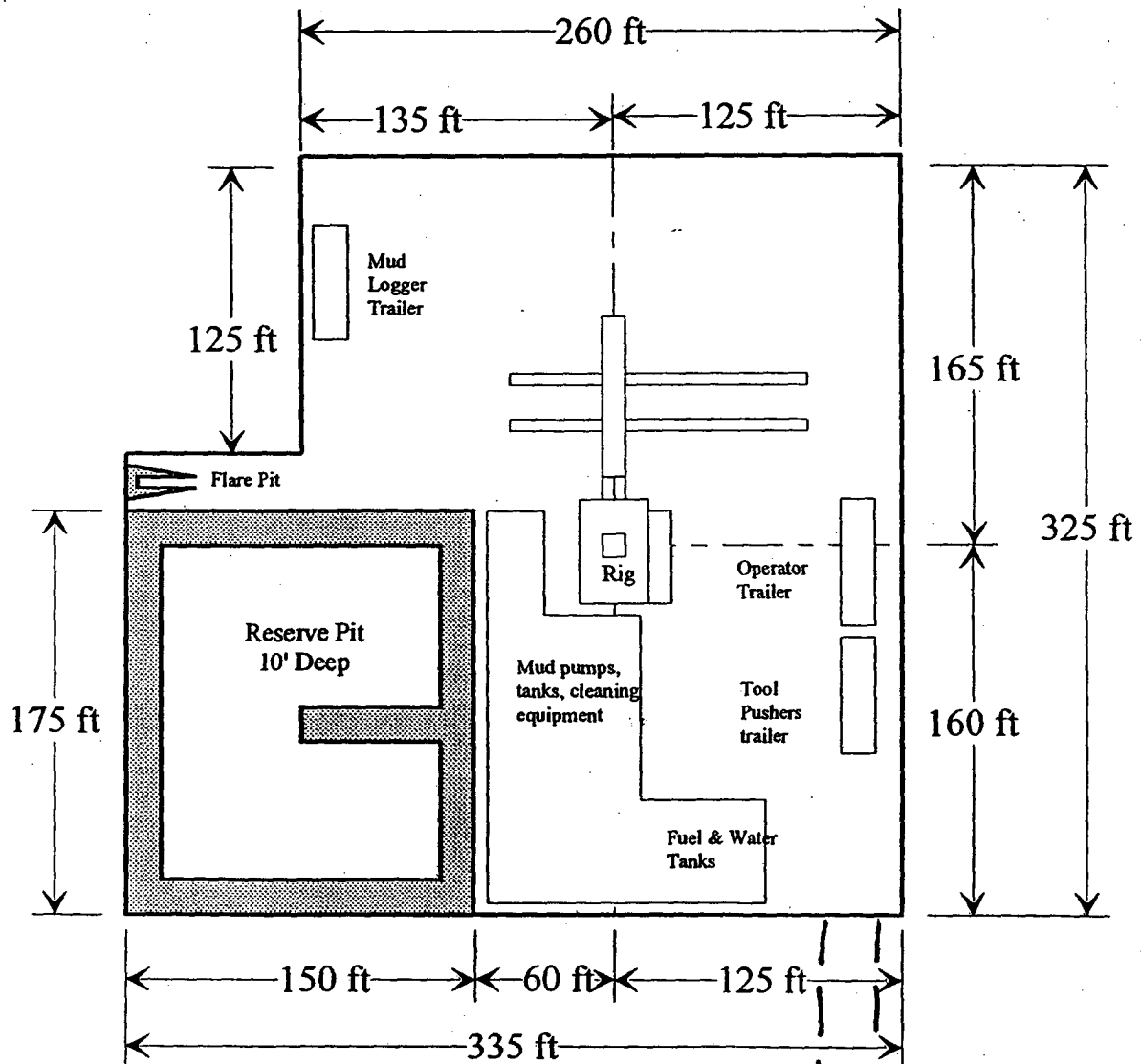
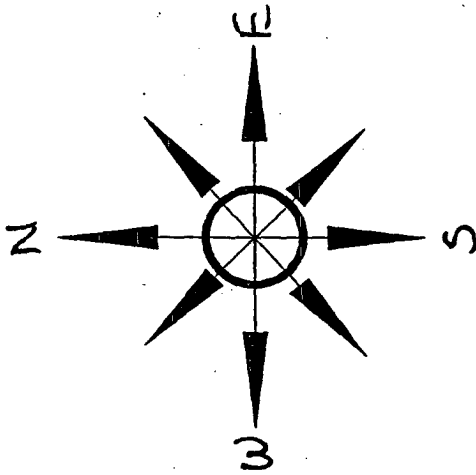
Typical 3,000 psi choke manifold assembly with at least these minimum features



**Yates Petroleum Corporation**

Location Layout for Permian Basin

Up to 12,000'

EXHIBIT  
C

Distance from Well  
Head to Reserve Pit  
will vary between rigs

The above dimension  
should be a maximum

ROAD

