

SUR: I-26-14s-37e, 1980/S & 660/E
 BHL: N-26-14s-37e 808/S & 2934/E
 API #30-025-05150

Platinum Exploration

Pope 26 #17-H

Lea County, New Mexico

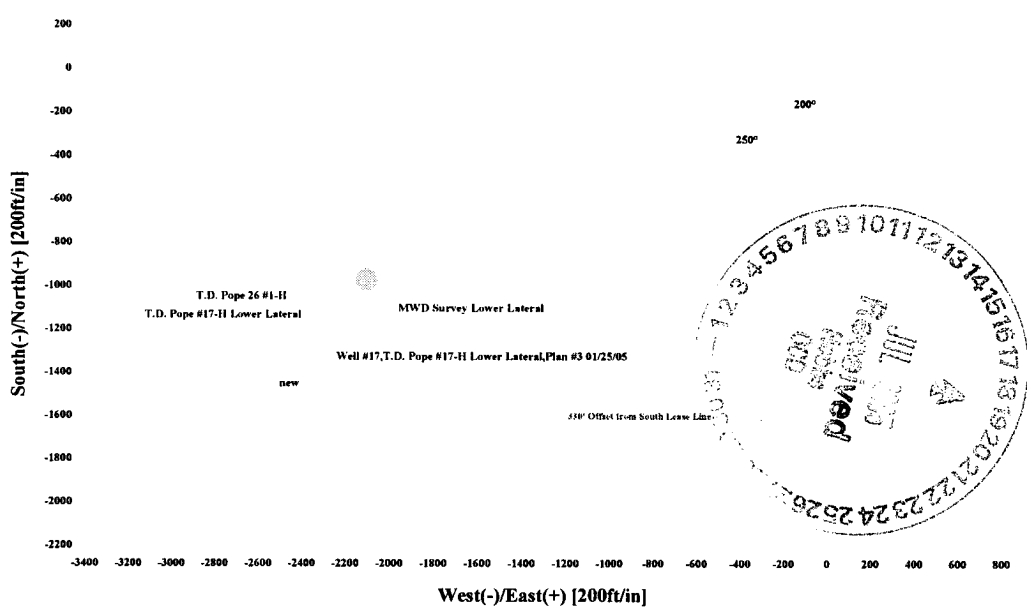
Section 26, T-14-S, R-37-E

Morning Page Plot

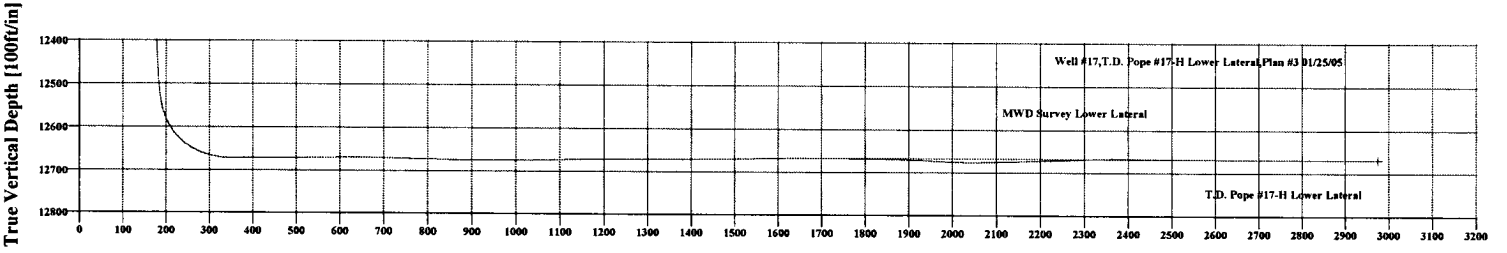


Survey: MWD Survey Lower Lateral (Well #17/T.D. Pope #17-H Lower Lateral)

Mag. Field
 Strength: 49.66mT
 Dip Angle: 61.21°
 Date: 1/14/2005
 Model: Igr2005



No	MD	Inc	Az	TVD	-N/S	-E/W	DLog	TFace	VSec
1	12458.00	5.89	175.91	12452.40	-115.11	-146.05	0.00	0.00	180.15
2	12517.00	7.03	209.72	12511.05	-121.26	-147.62	6.62	90.58	184.08
3	12548.00	11.43	209.72	12541.64	-125.28	-150.09	14.19	0.00	181.09
4	12579.00	22.07	215.45	12571.28	-133.02	-155.00	34.69	11.60	195.59
5	12611.00	33.41	224.30	12599.57	-144.26	-164.68	37.61	23.97	206.99
6	12642.00	45.29	228.12	12623.50	-157.77	-178.89	39.10	13.03	227.46
7	12673.00	56.72	230.78	12643.98	-170.37	-197.20	37.46	11.11	250.58
8	12705.00	67.44	234.93	12657.95	-190.37	-219.72	35.40	19.39	278.00
9	12736.00	78.17	238.89	12667.10	-206.49	-244.51	35.69	20.04	307.19
10	12766.00	87.05	243.27	12670.96	-221.08	-270.40	31.63	20.92	336.77
11	12798.00	91.36	244.38	12671.40	-235.44	-298.98	15.00	26.10	368.72
12	12861.00	89.96	248.07	12670.68	-260.83	-356.62	6.26	119.75	431.70
13	12923.00	90.48	250.01	12670.44	-283.01	-414.51	3.24	74.99	493.61
14	12986.00	90.66	252.99	12669.81	-303.00	-474.25	4.74	86.53	556.33
15	13049.00	90.13	250.71	12669.38	-322.62	-534.11	3.72	-103.08	619.00
16	13112.00	89.52	255.46	12669.57	-340.94	-594.37	7.60	97.32	681.52
17	13175.00	88.64	257.65	12670.54	-355.59	-655.63	3.75	111.91	743.46
18	13238.00	88.15	257.57	12672.13	-369.10	-717.14	0.19	-138.38	805.18
19	13301.00	88.72	255.02	12673.63	-384.02	-778.32	4.06	-86.22	867.16
20	13364.00	90.04	253.70	12674.31	-401.01	-838.99	2.96	-45.01	929.51
21	13427.00	90.13	253.52	12674.21	-418.78	-899.43	0.32	-63.43	991.97
22	13490.00	90.92	250.71	12674.64	-438.13	-959.37	4.63	-74.29	1054.61
23	13553.00	91.36	249.30	12672.38	-459.66	-1018.56	2.84	-75.65	1117.45
24	13616.00	90.31	246.32	12671.47	-483.45	-1076.88	5.01	-109.39	1180.41
25	13679.00	89.86	245.70	12671.32	-509.07	-1134.44	1.13	-119.44	1243.43
26	13742.00	90.57	245.52	12671.03	-534.67	-1190.91	1.03	-16.44	1305.41
27	13804.00	90.48	243.17	12670.45	-560.95	-1248.16	0.57	-104.42	1368.40
28	13866.00	90.13	243.79	12670.12	-586.68	-1304.57	1.15	119.44	1430.39
29	13929.00	90.66	245.70	12669.69	-612.56	-1360.00	0.85	-9.64	1493.39
30	13993.00	91.28	246.05	12668.60	-638.71	-1420.41	1.11	29.44	1557.38
31	14056.00	90.84	243.50	12667.44	-665.56	-1477.38	4.11	-99.77	1620.35
32	14118.00	90.04	240.60	12666.96	-694.61	-1532.14	4.85	-105.41	1682.38
33	14181.00	89.34	238.41	12667.30	-726.38	-1586.42	3.65	-107.73	1744.76
34	14244.00	89.08	237.18	12668.17	-760.15	-1639.73	2.00	-101.94	1807.09
35	14307.00	88.99	236.38	12669.23	-794.66	-1692.42	1.28	-96.43	1869.25
36	14370.00	87.32	235.17	12671.26	-830.07	-1744.48	3.27	-144.11	1931.19
37	14433.00	86.97	235.15	12674.25	-864.31	-1793.67	0.58	-176.73	1990.12
38	14496.00	90.48	236.74	12675.65	-899.57	-1845.84	6.12	-24.39	2052.03
39	14559.00	91.89	235.07	12674.35	-934.88	-1898.00	3.47	-49.80	2113.99
40	14621.00	91.54	235.51	12672.69	-970.17	-1948.94	0.91	124.51	2176.46
41	14682.00	91.71	234.45	12670.68	-1006.88	-2001.35	1.68	-80.87	2237.63
42	14742.00	92.33	237.26	12669.62	-1023.70	-2056.14	9.59	77.50	2297.13
43	14744.00	92.42	238.23	12668.30	-1040.77	-2053.18	3.04	84.67	2298.76
44	14775.00	91.80	238.41	12667.15	-1057.64	-2099.54	2.08	163.82	2329.46
45	14807.00	90.75	239.20	12666.44	-1073.61	-2106.91	4.11	143.04	2361.19
46	14838.00	88.99	239.99	12666.51	-1089.29	-2133.64	6.22	155.83	2391.99
47	14870.00	89.25	239.99	12667.90	-1105.30	-2161.35	0.81	0.00	2423.80
48	14901.00	89.34	239.46	12667.38	-1120.92	-2188.12	1.73	-88.37	2454.61
49	14932.00	90.13	239.64	12667.53	-1136.64	-2214.84	2.61	12.84	2485.40
50	14964.00	89.96	239.64	12667.50	-1152.81	-2242.46	0.53	180.00	2517.20
51	15001.00	89.76	239.64	12667.59	-1171.51	-2274.38	0.54	180.00	2553.96



Vertical Section at 246.11° [100ft/in]

Plan: Plan #3 01/25/05 Lower Lateral (T.D. Pope #17-H Lower Lateral)
 Created By: Robert Searles Date: 11/29/04

PATHFINDER

3201 East Loop 250 North
Midland, Texas 79705
432-687-1647

HEADER INFORMATION

Company: Platinum Exploration
Field: Denton (Devonian)
Site Name: T.D. Pope "26" #17-H
Mag Dec.Corr. +7.58 EAST
Well Name: Well #17
Wellpath Name: T.D. Pope #17-H Lower Lateral
Survey Name: MWD Survey Lower Lateral
Survey Date: 1/21/2005

Survey Type:

200 - 12458 Gyro Survey : Gyro Survey
12517- 12770 MWD Survey Lower Lateral : MWD
Depth Units: ft

SURFACE LOCATION

Site Northing 756245.57 Site Easting 858223.2

BOTTOM HOLE LOCATION

BHL MD 15001.00 BHL TVD 12667.59

Rig K.B: 0 Vsec Angle: 246.11
Vsec North: 0 Vsec East: 0

SURVEY LIST

MD	INC	AZI	TVD	NS	EW	VSEC	DLS
0	0	0	0	0	0	0	0
200	0.34	124.02	200	-0.33	0.49	-0.32	0.17
400	0.28	162.26	400	-1.13	1.13	-0.58	0.11
600.00	0.24	192.44	599.99	-2.00	1.19	-0.28	0.07
800.00	0.40	153.55	799.99	-3.04	1.41	-0.06	0.13
1000.00	0.17	173.84	999.99	-3.96	1.75	0.00	0.12
1200.00	0.23	142.96	1199.99	-4.57	2.03	0.00	0.06
1400.00	0.29	242.07	1399.99	-5.13	1.82	0.41	0.20
1600.00	0.50	301.55	1599.98	-4.91	0.63	1.41	0.22
1800.00	0.59	317.58	1799.97	-3.69	-0.81	2.23	0.09
2000.00	0.57	270.31	1999.96	-2.93	-2.50	3.47	0.23
2200.00	0.54	277.26	2199.95	-2.80	-4.43	5.18	0.04
2400.00	0.44	280.16	2399.95	-2.55	-6.12	6.62	0.05
2600.00	0.29	265.93	2599.94	-2.45	-7.38	7.74	0.09
2800.00	0.32	280.38	2799.94	-2.39	-8.43	8.67	0.04
3000.00	0.23	306.43	2999.94	-2.05	-9.30	9.34	0.08
3200.00	0.44	339.18	3199.93	-1.09	-9.90	9.49	0.14
3400.00	0.48	330.09	3399.93	0.35	-10.59	9.54	0.04
3600.00	0.96	297.37	3599.91	1.85	-12.50	10.68	0.31
3800.00	0.97	296.52	3799.88	3.38	-15.50	12.80	0.01
4000.00	1.07	293.30	3999.85	4.87	-18.73	15.15	0.06
4200.00	0.82	304.69	4199.83	6.42	-21.62	17.17	0.16
4400.00	0.89	292.19	4399.80	7.82	-24.23	18.99	0.10
4600.00	0.82	289.39	4599.78	8.89	-27.02	21.11	0.04
4800.00	0.64	262.34	4799.77	9.21	-29.48	23.22	0.19
5000.00	0.41	263.80	4999.76	8.99	-31.30	24.98	0.12

PATHFINDER

3201 East Loop 250 North
Midland, Texas 79705
432-687-1647

5200.00	0.27	251.53	5199.75	8.76	-32.46	26.13	0.08
5400.00	0.37	239.36	5399.75	8.28	-33.46	27.24	0.06
5600.00	0.74	223.37	5599.74	7.01	-34.90	29.07	0.20
5800.00	0.82	214.32	5799.72	4.89	-36.60	31.48	0.07
6000.00	1.12	247.89	5999.69	2.98	-39.21	34.65	0.31
6200.00	1.34	251.81	6199.65	1.51	-43.25	38.93	0.12
6400.00	1.18	253.28	6399.60	0.19	-47.44	43.30	0.08
6600.00	1.17	253.76	6599.56	-0.98	-51.37	47.37	0.01
6800.00	1.26	249.54	6799.51	-2.32	-55.39	51.59	0.06
7000.00	1.13	254.28	6999.47	-3.62	-59.35	55.73	0.08
7200.00	1.04	248.50	7199.43	-4.82	-62.94	59.50	0.07
7400.00	1.11	264.92	7399.40	-5.66	-66.56	63.15	0.16
7600.00	0.98	263.94	7599.37	-6.01	-70.19	66.61	0.07
7800.00	0.99	259.13	7799.34	-6.51	-73.59	69.92	0.04
8000.00	0.85	265.62	7999.31	-6.95	-76.76	73.00	0.09
8200.00	1.20	289.06	8199.28	-6.38	-80.22	75.93	0.27
8400.00	1.72	303.13	8399.21	-4.06	-84.71	79.10	0.31
8600.00	1.45	298.18	8599.14	-1.22	-89.46	82.29	0.15
8800.00	1.31	284.55	8799.08	0.55	-93.90	85.63	0.18
9000.00	1.56	287.55	8999.02	1.94	-98.71	89.47	0.13
9200.00	1.41	300.29	9198.95	4.00	-103.43	92.95	0.18
9400.00	1.21	308.62	9398.90	6.56	-107.20	95.36	0.14
9600.00	0.50	300.58	9598.87	8.33	-109.61	96.84	0.36
9800.00	0.48	264.23	9798.87	8.68	-111.19	98.15	0.15
10000.00	0.30	276.74	9998.86	8.66	-112.54	99.39	0.10
10200.00	0.69	194.30	10198.86	7.56	-113.36	100.59	0.36
10400.00	2.16	207.97	10398.79	3.06	-115.43	104.30	0.75
10600.00	2.29	208.33	10598.64	-3.79	-119.09	110.42	0.07
10800.00	2.25	211.62	10798.48	-10.65	-123.04	116.81	0.07
11000.00	2.63	225.93	10998.30	-17.18	-128.40	124.36	0.36
11200.00	2.31	206.32	11198.12	-23.98	-133.48	131.76	0.45
11400.00	2.75	188.26	11397.93	-32.35	-135.96	137.41	0.45
11600.00	4.10	180.24	11597.57	-44.24	-136.68	142.89	0.71
11800.00	3.62	191.99	11797.12	-57.57	-138.02	149.51	0.46
12000.00	3.84	199.23	11996.69	-70.07	-141.54	157.79	0.26
12200.00	6.54	182.19	12195.87	-87.78	-144.18	167.38	1.54
12400.00	5.82	187.22	12394.70	-109.22	-145.89	177.62	0.45
12458.00	5.89	175.91	12452.40	-115.11	-146.05	180.15	1.99
12517.00	7.03	209.72	12511.05	-121.26	-147.62	184.08	6.62
12548.00	11.43	209.72	12541.64	-125.58	-150.09	188.09	14.19
12579.00	22.07	215.45	12571.28	-133.02	-155.00	195.59	34.69
12611.00	33.41	224.30	12599.57	-144.26	-164.68	208.99	37.61
12642.00	45.29	228.12	12623.50	-157.77	-178.89	227.46	39.10
12673.00	56.72	230.78	12642.98	-173.37	-197.20	250.51	37.46
12705.00	67.44	234.93	12657.95	-190.37	-219.72	278.00	35.40
12736.00	78.17	238.89	12667.10	-206.49	-244.51	307.19	36.69
12766.00	87.05	242.27	12670.96	-221.08	-270.40	336.77	31.63
12798.00	91.36	244.38	12671.40	-235.44	-298.98	368.72	15.00
12861.00	89.96	248.07	12670.68	-260.83	-356.62	431.70	6.26
12923.00	90.48	250.01	12670.44	-283.01	-414.51	493.61	3.24
12986.00	90.66	252.99	12669.81	-303.00	-474.25	556.33	4.74

PATHFINDER

3201 East Loop 250 North
Midland, Texas 79705
432-687-1647

13049.00	90.13	250.71	12669.38	-322.62	-534.11	619.00	3.72
13112.00	89.52	255.46	12669.57	-340.94	-594.37	681.52	7.60
13175.00	88.64	257.65	12670.58	-355.59	-655.63	743.46	3.75
13238.00	88.55	257.57	12672.13	-369.10	-717.14	805.18	0.19
13301.00	88.72	255.02	12673.63	-384.02	-778.32	867.16	4.06
13364.00	90.04	253.70	12674.31	-401.01	-838.99	929.51	2.96
13427.00	90.13	253.52	12674.21	-418.78	-899.43	991.97	0.32
13490.00	90.92	250.71	12673.64	-438.13	-959.37	1054.61	4.63
13553.00	91.36	249.30	12672.38	-459.66	-1018.56	1117.45	2.34
13616.00	90.31	246.32	12671.47	-483.45	-1076.88	1180.41	5.01
13679.00	89.96	245.70	12671.32	-509.07	-1134.44	1243.41	1.13
13741.00	90.57	245.52	12671.03	-534.67	-1190.91	1305.41	1.03
13804.00	90.48	245.17	12670.45	-560.95	-1248.16	1368.40	0.57
13866.00	90.13	245.79	12670.12	-586.68	-1304.57	1430.39	1.15
13929.00	90.66	245.70	12669.69	-612.56	-1362.00	1493.39	0.85
13993.00	91.28	246.05	12668.60	-638.71	-1420.41	1557.38	1.11
14056.00	90.84	243.50	12667.44	-665.56	-1477.38	1620.35	4.11
14118.00	90.04	240.60	12666.96	-694.61	-1532.14	1682.18	4.85
14181.00	89.34	238.41	12667.30	-726.58	-1586.42	1744.76	3.65
14244.00	89.08	237.18	12668.17	-760.15	-1639.73	1807.09	2.00
14307.00	88.99	236.38	12669.23	-794.66	-1692.42	1869.25	1.28
14370.00	87.32	235.17	12671.26	-830.07	-1744.48	1931.19	3.27
14430.00	86.97	235.15	12674.25	-864.31	-1793.67	1990.02	0.58
14493.00	90.48	236.74	12675.65	-899.57	-1845.84	2052.01	6.12
14556.00	91.89	235.07	12674.35	-934.88	-1898.00	2113.99	3.47
14618.00	91.54	235.51	12672.49	-970.17	-1948.94	2174.86	0.91
14682.00	91.71	234.45	12670.68	-1006.88	-2001.33	2237.63	1.68
14712.00	92.33	237.26	12669.62	-1023.70	-2026.14	2267.13	9.59
14744.00	92.42	238.23	12668.30	-1040.77	-2053.18	2298.76	3.04
14775.00	91.80	238.41	12667.15	-1057.04	-2079.54	2329.46	2.08
14807.00	90.75	239.20	12666.44	-1073.61	-2106.91	2361.19	4.11
14838.00	88.99	239.99	12666.51	-1089.29	-2133.64	2391.99	6.22
14870.00	89.25	239.99	12667.00	-1105.30	-2161.35	2423.80	0.81
14901.00	89.34	239.46	12667.38	-1120.92	-2188.12	2454.61	1.73
14932.00	90.13	239.64	12667.53	-1136.64	-2214.84	2485.40	2.61
14964.00	89.96	239.64	12667.50	-1152.81	-2242.46	2517.20	0.53
15001.00	89.76	239.64	12667.59	-1171.51	-2274.38	2553.96	0.54