

Submit 3 Copies To Appropriate District
Office:
District I
1625 N. French Dr., Hobbs, NM 88240
District II
1301 W. Grand Ave., Artesia, NM 88210
District III
1000 Rio Brazos Rd., Aztec, NM 87410
District IV
1220 S. St. Francis Dr., Santa Fe, NM
87505

State of New Mexico
Energy, Minerals and Natural Resources

Form C-103
May 27, 2004

OIL CONSERVATION DIVISION
1220 South St. Francis Dr.
Santa Fe, NM 87505

WELL API NO. 30-025-00360
5. Indicate Type of Lease STATE <input checked="" type="checkbox"/> FEE <input type="checkbox"/>
6. State Oil & Gas Lease No. E5370
7. Lease Name or Unit Agreement Name Lea R State NCT A
8. Well Number 2
9. OGRID Number 169355
10. Pool name or Wildcat North Anderson Ranch Canyon Cisco
11. Elevation (Show whether DR, RKB, RT, GR, etc.) 4303' GR
Pit or Below-grade Tank Application <input type="checkbox"/> or Closure <input type="checkbox"/> No Pit
Pit type <u>Steel</u> Depth to Groundwater <u>214'</u> Distance from nearest fresh water well <u>>1000'</u> Distance from nearest surface water <u>1000'</u>
Pit Liner Thickness: <u>mil</u> Below-Grade Tank: Volume <u>bbls</u> Construction Material <u></u>

SUNDRY NOTICES AND REPORTS ON WELLS
(DO NOT USE THIS FORM FOR PROPOSALS TO DRILL OR TO DEEPEN OR PLUG BACK TO A DIFFERENT RESERVOIR. USE "APPLICATION FOR PERMIT" (FORM C-101) FOR SUCH PROPOSALS.)

1. Type of Well: Oil Well ☒ Gas Well ☐ Other ☐

2. Name of Operator
Devon Louisiana Corporation

3. Address of Operator
20 North Broadway, Suite 1500, Oklahoma City, Oklahoma 73102 (405) 552-4615

4. Well Location
Unit Letter D : 660 feet from the North line and 660 feet from the West line
Section 1 Township 16S Range 32E NMPM Lea 13 County 20

11. Elevation (Show whether DR, RKB, RT, GR, etc.)
4303' GR

Pit or Below-grade Tank Application ☐ or Closure ☐ No Pit

Pit type Steel Depth to Groundwater 214' Distance from nearest fresh water well >1000' Distance from nearest surface water 1000'

Pit Liner Thickness: mil Below-Grade Tank: Volume bbls Construction Material

12. Check Appropriate Box to Indicate Nature of Notice, Report or Other Data

NOTICE OF INTENTION TO:

- PERFORM REMEDIAL WORK ☐ PLUG AND ABANDON ☐
TEMPORARILY ABANDON ☐ CHANGE PLANS ☐
PULL OR ALTER CASING ☐ MULTIPLE COMPL ☐
OTHER: ☐

SUBSEQUENT REPORT OF:

- REMEDIAL WORK ☐ ALTERING CASING ☐
COMMENCE DRILLING OPNS. ☐ P AND A ☒
CASING/CEMENT JOB ☐
OTHER: Salt Water Disposal Conversion ☐

13. Describe proposed or completed operations. (Clearly state all pertinent details, and give pertinent dates, including estimated date of starting any proposed work). SEE RULE 1103. For Multiple Completions: Attach wellbore diagram of proposed completion or recompletion.

- MIRU on 8/2/05
- Pulled existing rod string & 2-7/8" production tubing. Set CIBP at 10,480'. Dumped 35' cement on top. Set CIBP at 9,580' and dumped 35' cement on top. Circulated hole with 9 ppg mud.
- Pumped 25 sx cement plug at 7545'. WOC. Tagged at 7290'. Pumped 25 sx cement plug at 5275'. Tagged at 5100'.
- Pumped 25 sx cement plug at 4199'. WOC. Tagged at 4002'.
- RIH w/ wireline & cut 5-1/2" casing at 2413'. Max pull 190K. Unable to pull any casing. Pressured up to 800 psi. No leak off. Reports indicated 5-1/2" casing cemented to surface after old repairs. Visited with Gary Wink with OCD.
- Pumped 25 sx cement plug at 2463'. WOC. Tagged at 2217'. Pumped 25 sx cement plug at 1430'
- Pumped 25 sx cement plug at 689'. Tagged at 420'. Pulled tubing to 60' and pumped 10 sx cement to surface.
- ND BOP. RD unit. Well plugged & abandoned on 8/10/05.

Approved as to plugging of the Well Bore.
Liability under bond is retained until
surface restoration is completed.

I hereby certify that the information above is true and complete to the best of my knowledge and belief. I further certify that any pit or below-grade tank has been/will be constructed or closed according to NMOCD guidelines ☐, a general permit ☐ or an (attached) alternative OCD-approved plan ☐.

SIGNATURE Ronnie Slack TITLE Engineering Technician DATE 8/11/05

Type or print name Ronnie Slack
For State Use Only

E-mail address: Ronnie.Slack@dvn.com

Telephone No. 405-552-4615

APPROVED BY: Gary W. Wink ORIGINAL SIGNED BY
GARY W. WINK
OC FIELD REPRESENTATIVE II/STAFF MANAGER
Conditions of Approval (if any) DATE AUG 19 2005

DEVON ENERGY PRODUCTION COMPANY LP

Well Name: LEA R STATE NCT A #2		Field: NORTH ANDERSON RANCH	
Location: SEC 1-T16S-R32E; 660' FNL & 660' FWL		County: LEA	State: NM
Elevation: 4303' GL; 20' KB		Spud Date: 3/3/1962	Compl Date: 4/25/1962
API#: 30-025-00360	Prepared by: Ronnie Slack	Date: 08/11/05	Rev:

■ Plugged & Abandoned on 8/10/05

17-1/2" hole
13-3/8", 48#, H40, @ 639'
 Cmt'd w/625 sxs. Circ 25 sxs to surf.

8-5/8" casing collapsed at 2582-2615'. Swaged out. Indicated that csg had holes or split in same area. 8-5/8" annulus sqzd w/400 sxs thru intermediate csg valve (7-64)

11" Hole
8-5/8", 24# & 32#, J55, ST&C, @ 4149'
 Cmt'd w/500 sxs. Ran Temp survey. Toc @ 3070'

Parted 5-1/2" casing @ 5202'. POOH w/ csg. Ran bowen csg bowl on 170 Jts of 5-1/2", 15.5# & 14#. (6-64)

Perf for sqz: 5662-63', sqzd w/600 sxs. Cmt circ to surf. Sqzq tstsd ok.

Perf for sqz: 6798-99', unable to break circ

Perf for sqz: 7524-25', unable to break circ

TOC @ 7640' by Temp Survey

4" Liner top @ 9606'

WOLFCAMP

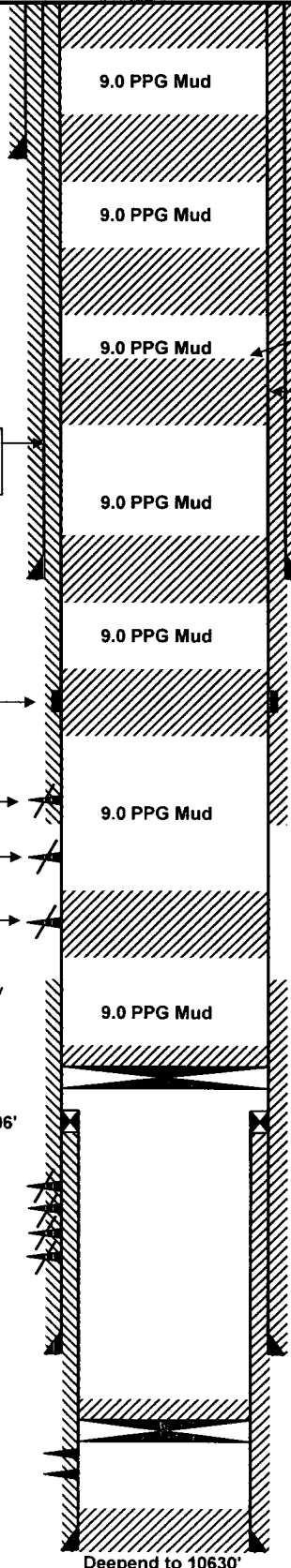
9758'-9770' (6-13-84)
 9802'-9828' (4-26-62)
 9834'-9856' (4-26-62)
 9922'-9930' (add 4-2-68)
 Above perms sqzd w/150 sxs (10-24-84)

7-7/8" Hole
5-1/2", 14#, 15.5#, 17#, J55, ST&C, LT&C, @ 10107'
 Cmt'd w/475 sxs. Ran Temp Survey. Toc @ 7640'

CANYON

10509-10511' (11-13-84)
 10516'-10522' (11-13-84)

4-3/4" Hole
4", 13.4#, K55, liner set at 10629'
 Cmt'd w/ 110 sxs.



Pumped 10 sx cement plug from surface to 60'

Tagged TOC at 420'
 Pumped 25 sx cement plug at 689'

Pumped 25 sx cement plug at 1430'

Tag TOC at 2217'
 Pumped 25 sx cement plug at 2463'

Cut 5-1/2" casing @ 2413'. Unable to pull. Pressured up to 800 psi. No leak off. Records indicated 5-1/2" cemented to surface thru sqz holes at 5662' on previous work.

Tagged TOC at 4002'
 Pumped 25 sx cement plug at 4199'

Tagged TOC at 5100'
 Pumped 25 sx cement plug at 5275'

Tagged TOC @ 7290
 Pumped 25 sx cement plug at 7545'

Dumped 35' cement on top
 CIBP @ 9580'

Dumped 35' cement on top
 CIBP @ 10480'

FC @ 10596'

Deepend to 10630'